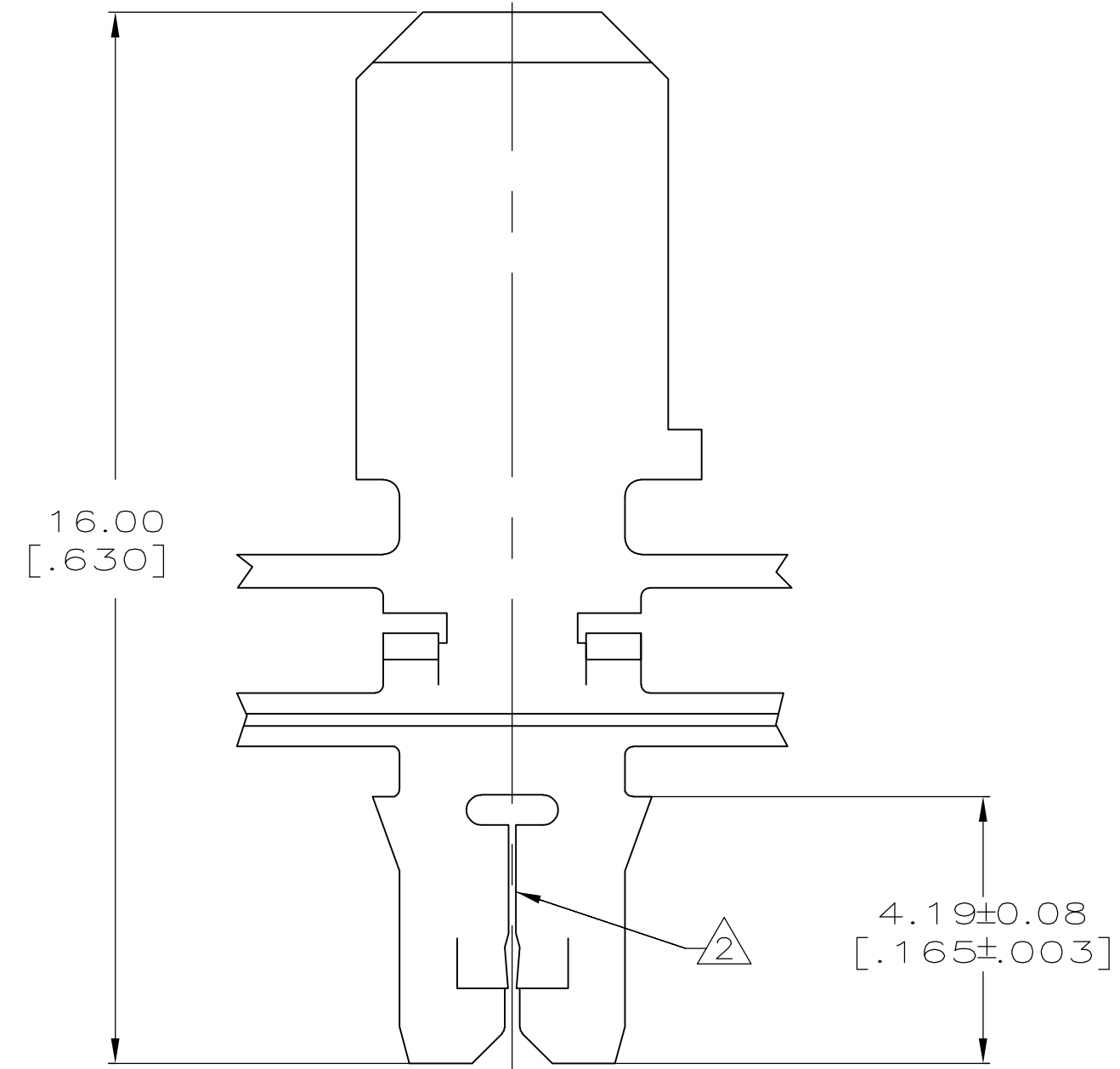
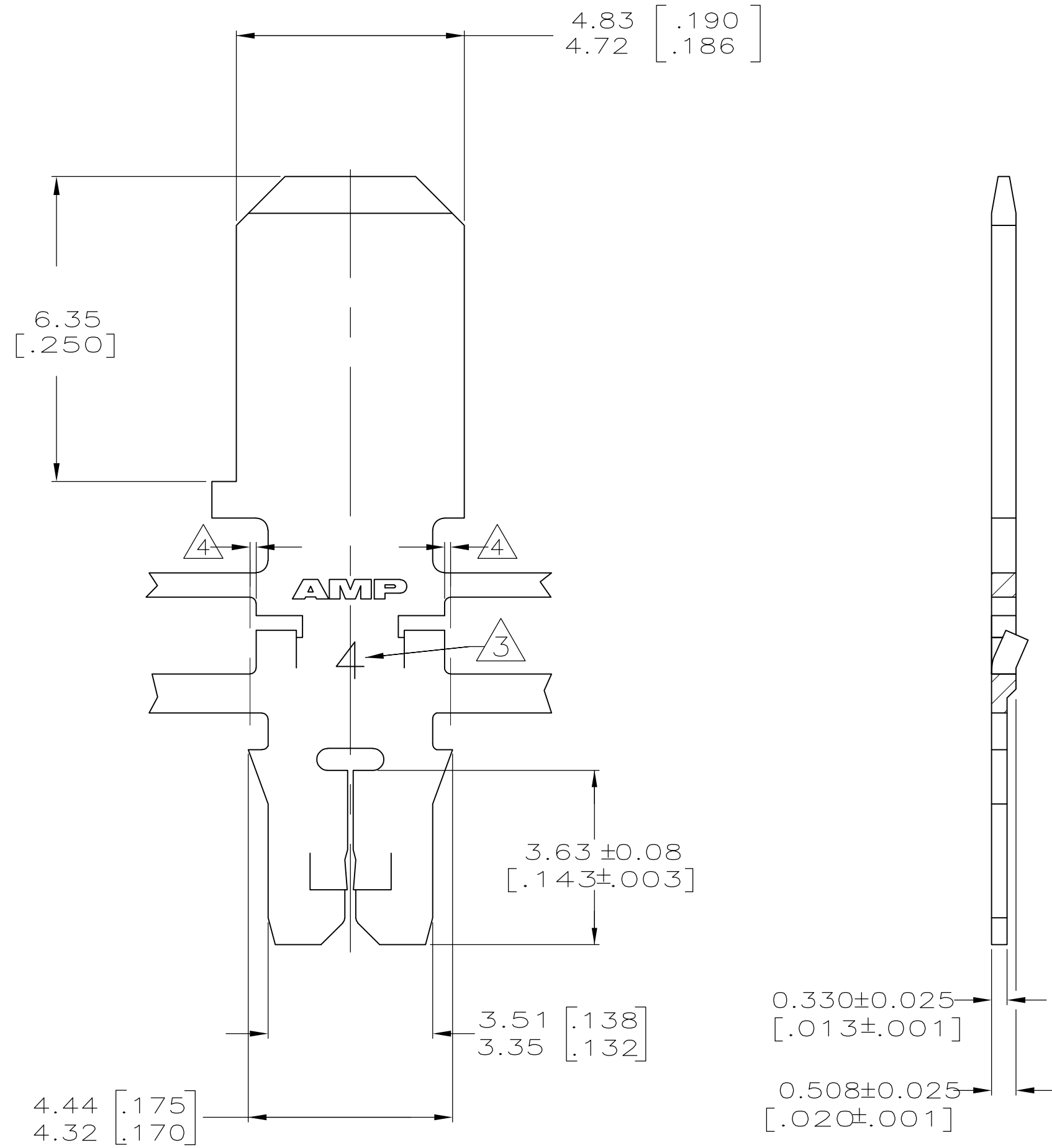


THIS DRAWING IS UNPUBLISHED. RELEASED FOR PUBLICATION
 © COPYRIGHT BY TYCO ELECTRONICS CORPORATION. ALL INTERNATIONAL RIGHTS RESERVED.

| LOC | | DIST | | REVISIONS | | | |
|-----|-----|---------------------------|---------|-----------|------|--|--|
| P | LTR | DESCRIPTION | DATE | DWN | APVD | | |
| A | | REVISED PER ECO-10-006334 | 24MAR10 | HMR | KR | | |

- 1 CONTINUOUS STRIP ON REELS WITH TERMINALS LOCATED ON 6.86±0.08 [.270±.003] CENTERS.
- 2 SLOT ACCEPTS 0.18-0.23mm [#33-#31] AWG COPPER MAGNET WIRE. TWO WIRES OF THE SAME SIZE MAX PER SLOT.
- 3 IDENTIFICATION NUMBER 4 FOR THE MAGNET WIRE SLOT SIZE.
- 4 0.25[.010] MAX CARRIER CUT-OFF TABS.



| | |
|----------------------|-------------|
| 082 PRE-MILLED BRASS | 1742833-1 |
| DESCRIPTION | PART NUMBER |

| | | | | | | | | | | | | | |
|---|--|------------------|----------------------------------|---------|---|---|--------|-----------|-------|------------|-----------|---------------|---|
| THIS DRAWING IS A CONTROLLED DOCUMENT. | | DWN | S SCHLEGEL | 1/26/10 | Tyco Electronics Corporation Harrisburg, PA 17105-3608 | | | | | | | | |
| DIMENSIONS: mm [INCHES] | | CHK | K RANDOLPH | 1/26/10 | | | | | | | | | |
| TOLERANCES UNLESS OTHERWISE SPECIFIED: | | APVD | K RANDOLPH | 1/26/10 | | | | | | | | | |
| 0 PLC ± - 1 PLC ± - 2 PLC ± 0.13 [.005] 3 PLC ± - 4 PLC ± - ANGLES ± - | | PRODUCT SPEC | 108-1484 | NAME | | TAB, 4.75 [.187] FASTON, MAG-MATE Slim Line | | | | | | | |
| MATERIAL SEE TABLE | | FINISH | 0.002032 [.000080] MIN TIN PLATE | WEIGHT | - | SIZE | A2 | CAGE CODE | 00779 | DRAWING NO | C=1742833 | RESTRICTED TO | - |
| | | CUSTOMER DRAWING | | SCALE | 10:1 | SHEET | 1 of 1 | REV | A | | | | |

1742833