

THIS DRAWING IS UNPUBLISHED.

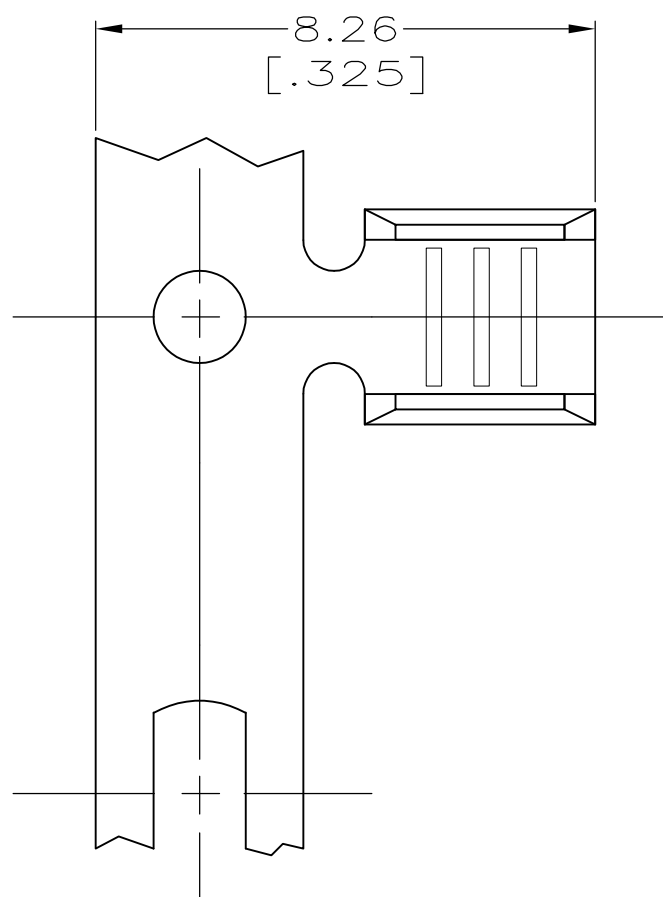
RELEASED FOR PUBLICATION

ALL RIGHTS RESERVED.

© COPYRIGHT - By -

LOC	DIST	REVISIONS			
P	LTR	DESCRIPTION	DATE	DWN	APVD
AF	50	L2	REVISED PER ECO-11-004820	11MAR11	RK HMR

6 OBSOLETE PARTS: OBSOLETE CIS STREAMLINING PER D.RENAUD/D.SINISI

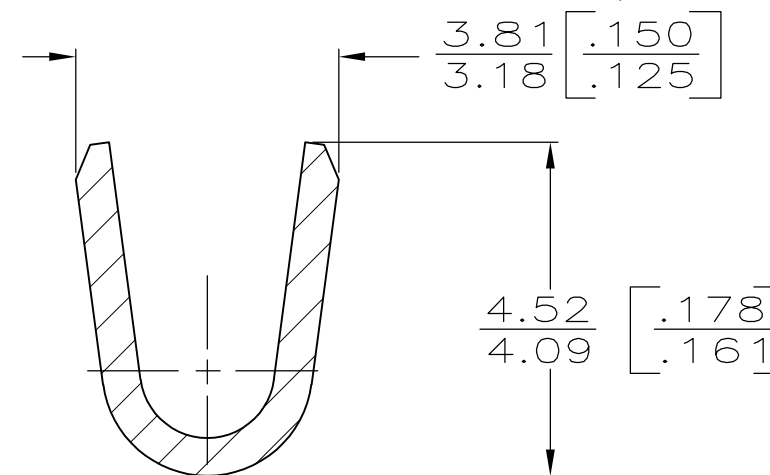


1 PRODUCT PROVIDED IN STRIP FORM ON REELS, BREAKS MAY BE PRESENT.

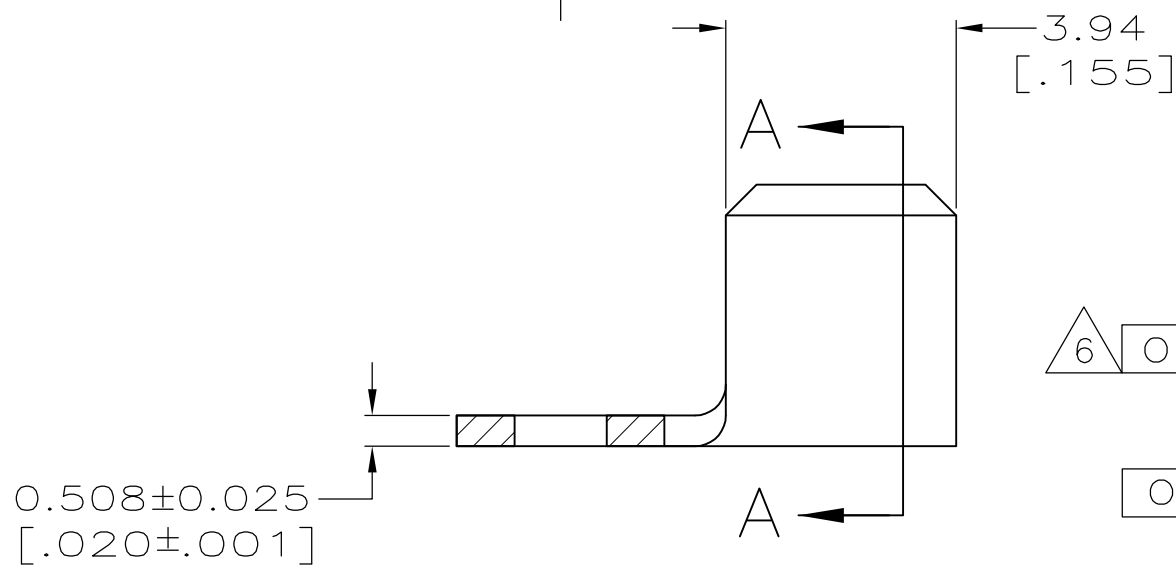
3 CRIMP WIDTH, .110 F TYPE
CRIMP HEIGHT (±.002) = (TOTAL CMA + 11,300) / 176,700

4 PRELIMINARY - NOT FOR PRODUCTION.

5 WIRE RANGE FOR NEW APPLICATIONS: 1500-5000 CMA
(WIRE RANGE APPROVED FOR APPLICATIONS IMPLEMENTED PRIOR TO 2005: 1970-4940 CMA).



SECTION A-A
SCALE 10:1



MATERIAL	FINISH	REELING	WIRE RANGE	PART NUMBER
1010 STEEL	NICKEL	REVERSE	-	4 63130-8
H02 COPPER-NICKEL	NONE			4 63130-7
6 OBSOLETE H02 PHOS BRONZE	TIN	-	-	5 63130-4
082 BRASS	NONE			3 63130-3
OBSOLETE	NONE	STANDARD	-	3 63130-2
				4 63130-1

THIS DRAWING IS A CONTROLLED DOCUMENT.

DWN 17/JAN/96 PHILLIP M FORTNEY
CHK 17/JAN/96 JEFF R RUTH
APVD 17/JAN/96 DENNIS SCHWENK

STE TE Connectivity

PRODUCT SPEC - SPLICE

APPLICATION SPEC 114-2088

WEIGHT -

SIZE A3 CAGE CODE 00779 DRAWING NO C-63130 RESTRICTED TO -

MATERIAL SEE TABLE FINISH SEE TABLE

CUSTOMER DRAWING SCALE 8:1 SHEET 1 OF 1 REV L2