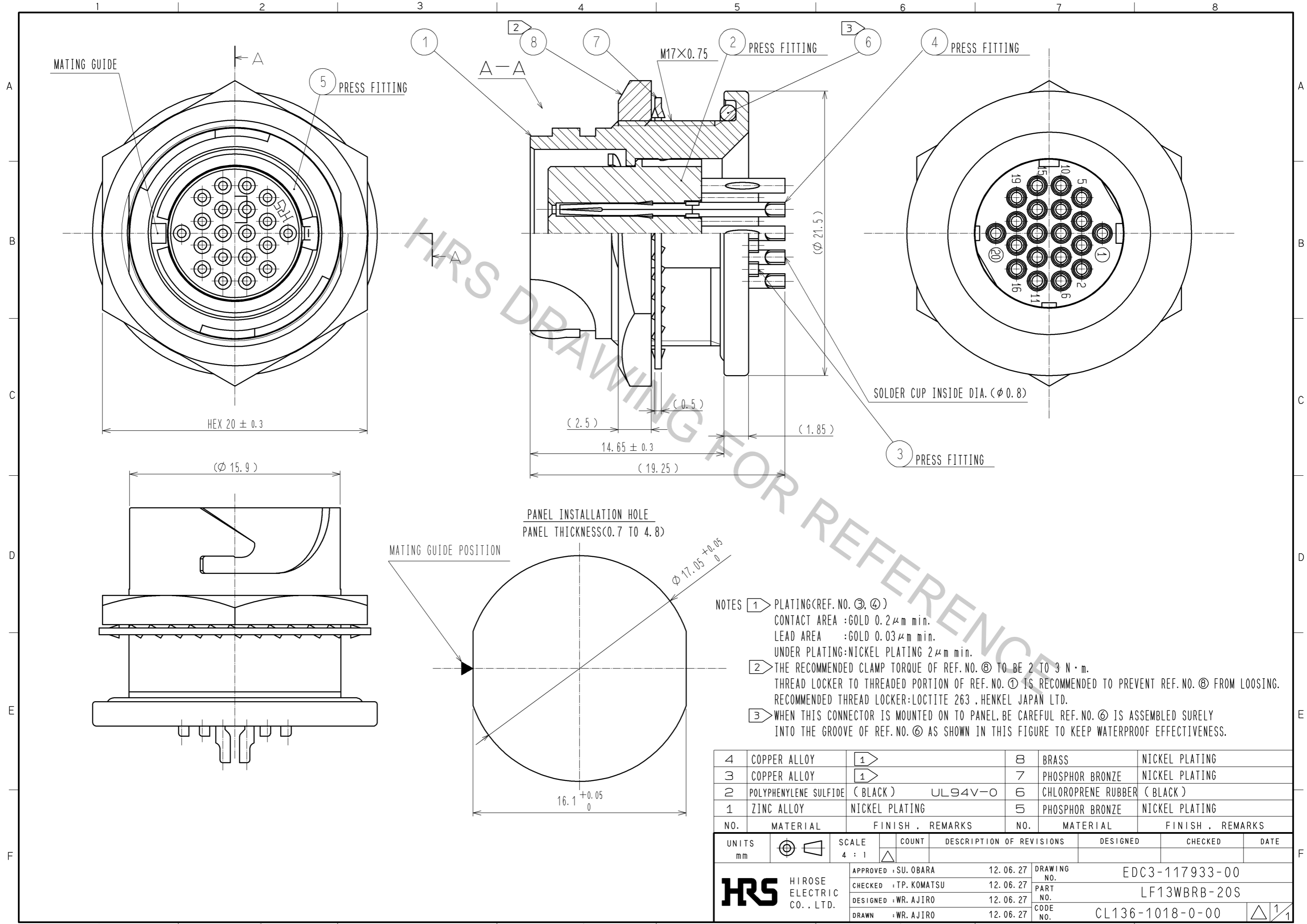


Aug.1.2018 Copyright 2018 HIROSE ELECTRIC CO., LTD. All Rights Reserved.
 In case that the application demands a high level of reliability, such as automotive,
 please contact a company representative for further information.



- NOTES
- ① PLATING (REF. NO. ③, ④)
 CONTACT AREA : GOLD $0.2 \mu\text{m}$ min.
 LEAD AREA : GOLD $0.03 \mu\text{m}$ min.
 UNDER PLATING : NICKEL PLATING $2 \mu\text{m}$ min.
 - ② THE RECOMMENDED CLAMP TORQUE OF REF. NO. ⑧ TO BE 2 TO 3 N·m.
 THREAD LOCKER TO THREADED PORTION OF REF. NO. ① IS RECOMMENDED TO PREVENT REF. NO. ⑧ FROM LOOSING.
 RECOMMENDED THREAD LOCKER : LOCTITE 263, HENKEL JAPAN LTD.
 - ③ WHEN THIS CONNECTOR IS MOUNTED ON TO PANEL, BE CAREFUL REF. NO. ⑥ IS ASSEMBLED SURELY INTO THE GROOVE OF REF. NO. ④ AS SHOWN IN THIS FIGURE TO KEEP WATERPROOF EFFECTIVENESS.

4	COPPER ALLOY	①	8	BRASS	NICKEL PLATING
3	COPPER ALLOY	①	7	PHOSPHOR BRONZE	NICKEL PLATING
2	POLYPHENYLENE SULFIDE (BLACK)	UL94V-0	6	CHLOROPRENE RUBBER (BLACK)	
1	ZINC ALLOY	NICKEL PLATING	5	PHOSPHOR BRONZE	NICKEL PLATING
NO.	MATERIAL	FINISH, REMARKS	NO.	MATERIAL	FINISH, REMARKS

UNITS mm		SCALE 4 : 1	COUNT 	DESCRIPTION OF REVISIONS	DESIGNED	CHECKED	DATE
HIROSE ELECTRIC CO., LTD.				APPROVED : SU. OBARA 12.06.27 CHECKED : TP. KOMATSU 12.06.27 DESIGNED : WR. AJIRO 12.06.27 DRAWN : WR. AJIRO 12.06.27	DRAWING NO. EDC3-117933-00 PART NO. LF13WBRB-20S CODE NO. CL136-1018-0-00		