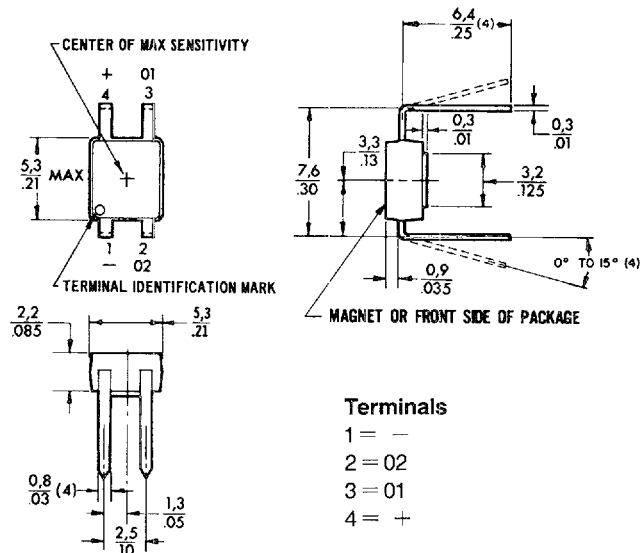


# 6SS Digital position sensors



## MOUNTING DIMENSIONS (For reference only)



### FEATURES

- Current sinking or current sourcing output
- Four pin dual-in-line terminals for printed circuit board or standard DIP socket mounting
- Output with or without molded-in flux concentrator
- Projects only 4 mm above PC board or DIP socket
- Smallest DIP package available

NOTE: For analog sensors, see page 25.

### 6SS ORDER GUIDE

Catalog Listings	6SS2/6SS4*		612SS2/612SS4*		613SS2/613SS4*		618SS4	
Supply Voltage (VDC)	4.5 to 5.5		6 to 24		6 to 24		4.5 to 24	
Supply Current (mA max.)	4.0		13.0		13.0		8.7	
Output Type	Source		Source		Sink		Sink	
Output Voltage (V)	(Vs-1.5)		(Vs-1.5)		0.4		0.4	
Current per Output (mA)	10		10		10		10	
Magnetics Type	Unipolar		Unipolar		Unipolar		Bipolar	
Magnetic Gauss Char. & Temp.	<b>6SS2</b>	<b>6SS4*</b>	<b>612SS2</b>	<b>612SS4**</b>	<b>613SS2</b>	<b>613SS4*</b>		
0 to 70°C	Max. Op.	880	720	560	460	560	460	75
	Min. Rel.	50	40	185	150	185	150	- 75
	Min. Dif.	40	35	40	35	40	35	35
- 40 to 100°C	Max. Op.	—	—	580	480	580	480	100
	Min. Rel.	—	—	150	120	150	120	- 100
	Min. Dif.	—	—	40	35	40	35	35
- 40 to 150°C	Max. Op.	—	—	600	495	600	495	160
	Min. Rel.	—	—	50	40	50	40	- 160
	Min. Dif.	—	—	40	35	40	35	35
25°C Typ.	Typ. Op.	430	350	400	330	400	330	35
	Typ. Rel.	260	215	300	245	300	245	- 35
	Typ. Dif.	170	135	100	85	100	85	70

\* Supplied with flux concentrator.  
\*\* Not necessarily latching.