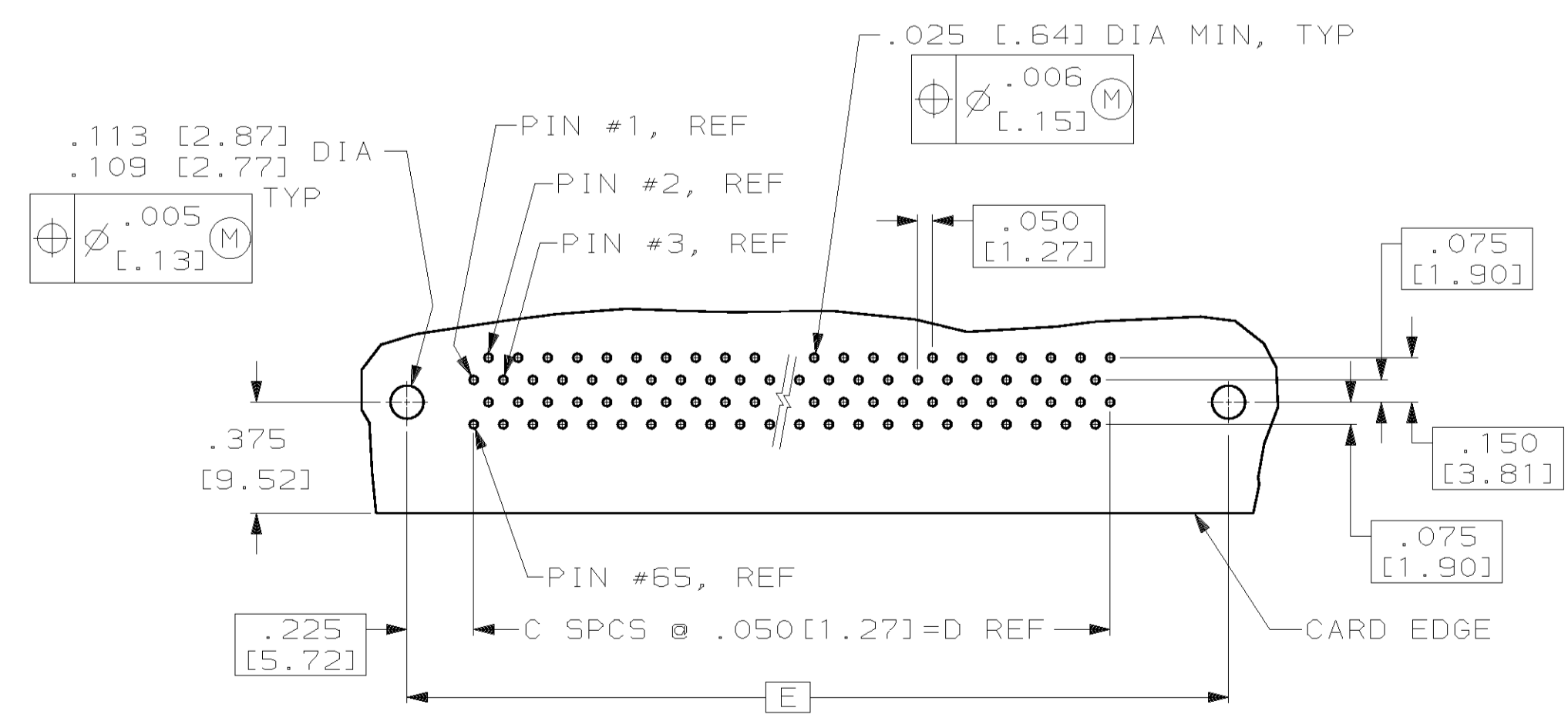
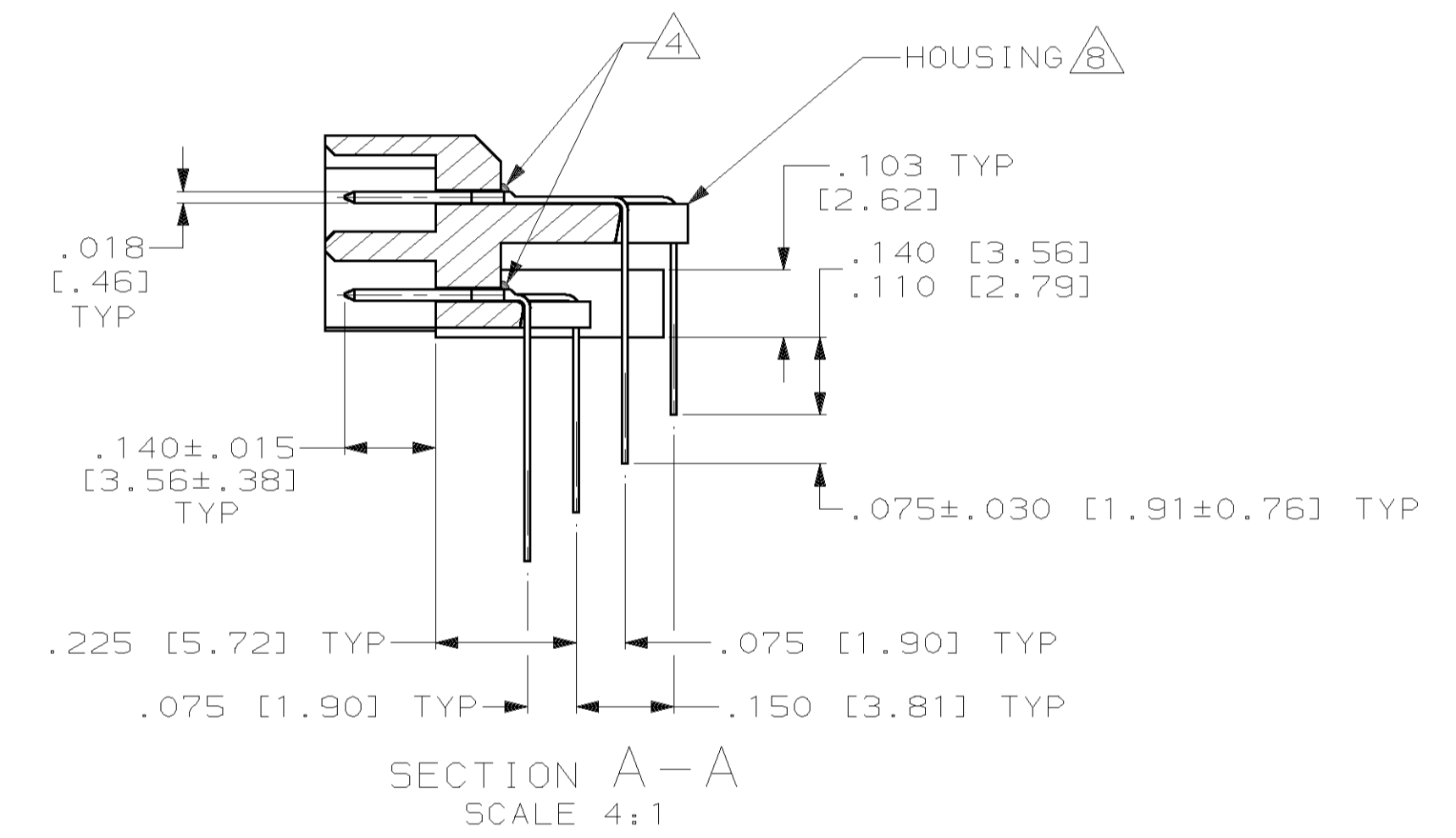
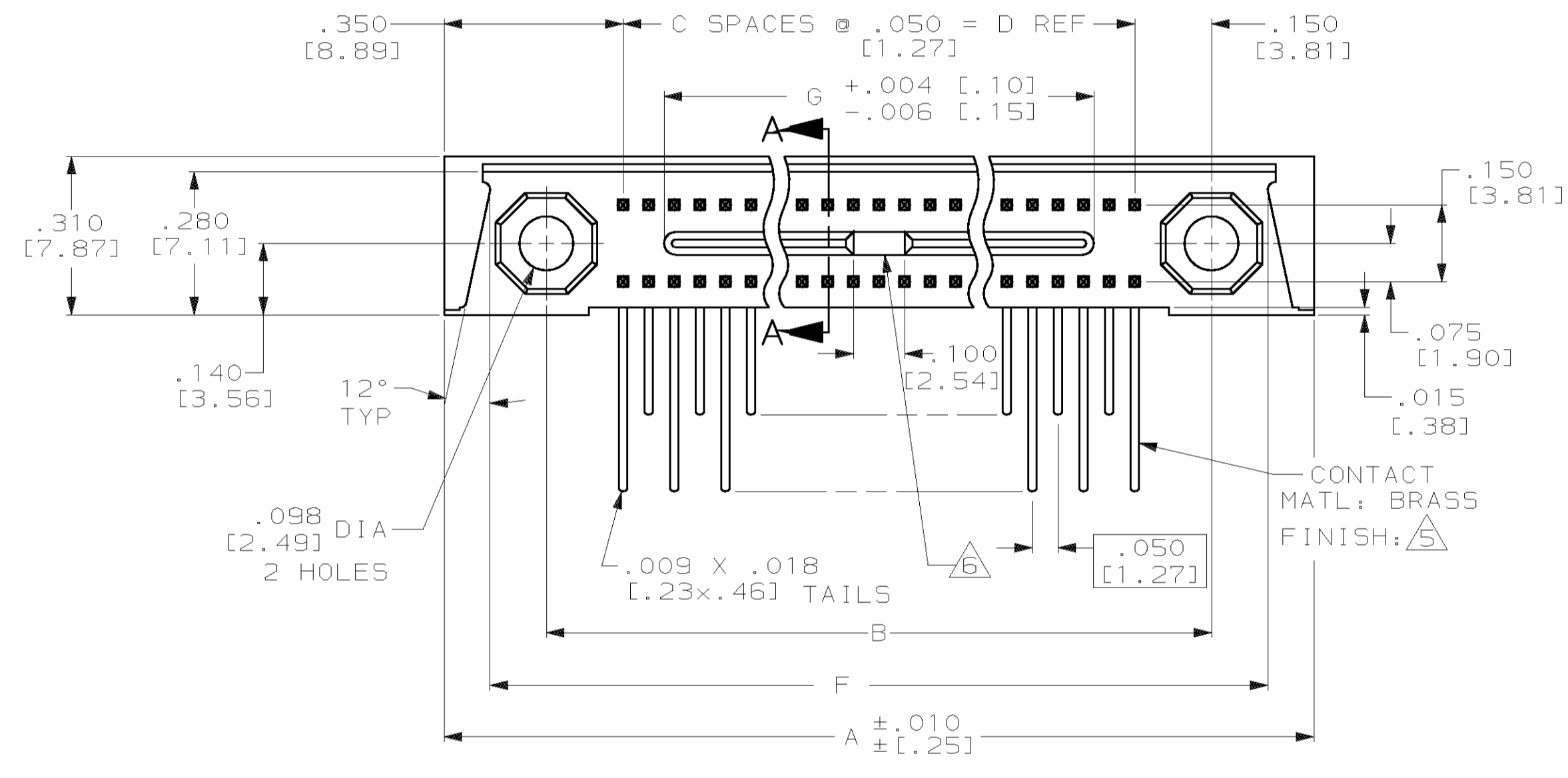
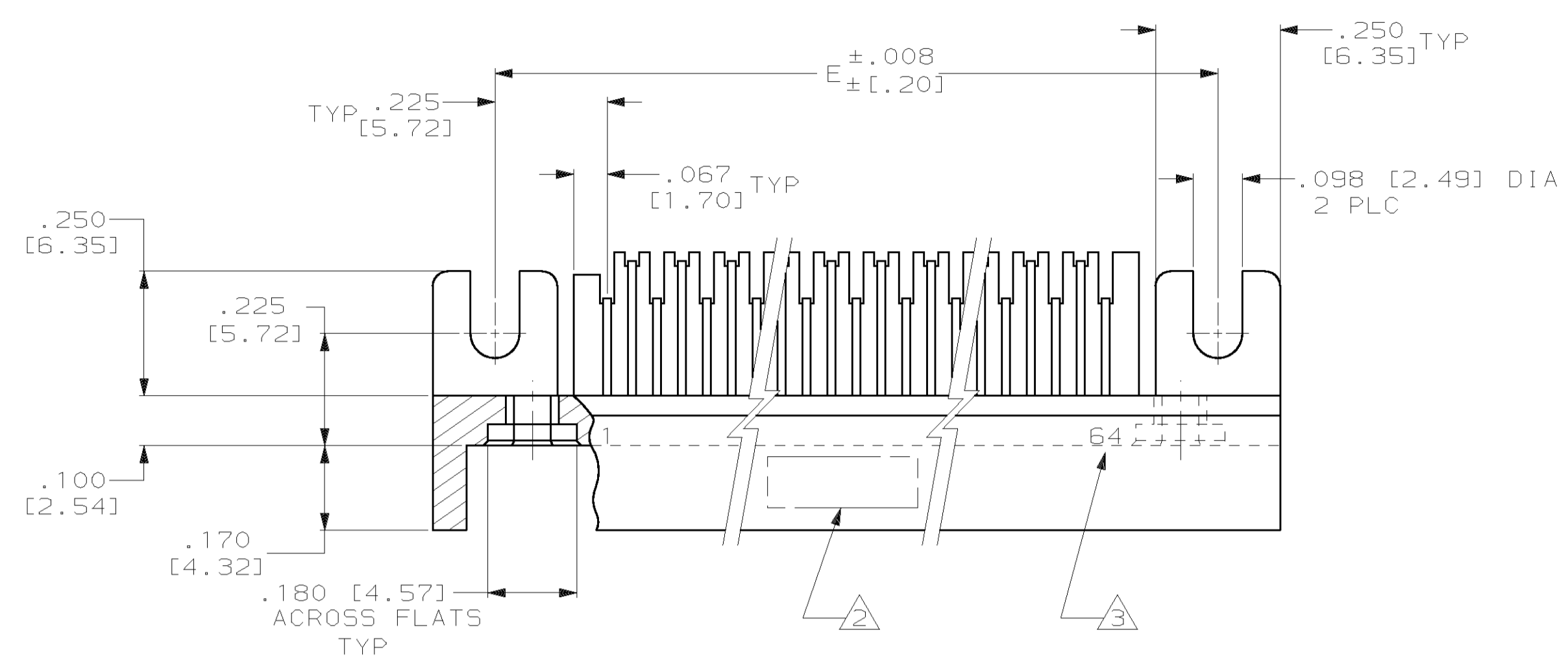


| LOC | | DIST | | REVISONS | | | |
|-----|----|------|-----|----------------------|-------|-----|------|
| DF | FO | TR | LYR | DESCRIPTION | DATE | OWN | APPR |
| | | C | | REV PER 063D-0417-02 | 10-02 | CT | DN |



- CONNECTOR MEETS ALL APPLICABLE REQUIREMENTS OF MIL-C-55302.
- AMP, 00779, AMP PART NO, CUSTOMER PART NO. (PER TABLE) AND DATE CODE MARKED IN THIS APPROXIMATE AREA.
- END CAVITY IDENTIFICATION NUMBERS (PER TABLE) MARKED THIS SIDE ONLY.
- EPOXY, FOR CONTACT RETENTION AND SEALING, APPLIED TO CONTACT ROWS IN THIS AREA.
- FINISH: PLATED GOLD .000050 THK PER MIL-G-45204 ON MATING END FOR A LENGTH OF .100 MIN, TAILS PLATED TIN-LEAD .000120 THK, ALL OVER NICKEL .000050 THK PER QQ-N-290.
- SPACE IN TONGUE NOT APPLICABLE FOR 20 THRU 50 POSITIONS.
- PART MUST PASS SEALING EFFECTIVENESS TEST PER 109-9005.
- HOUSING MATERIAL: LIQUID CRYSTAL POLYMER PER MIL-M-24519, GLCP-30F; COLOR: GRAY.

| | | | | | | | | | | |
|----------------------|--------------|---------------|---------------|---------------|---------------|----|---------------|---------------|------------|-------------|
| 7060015-8 | 1 - 45 | 2.040 [51.82] | 2.720 [69.09] | 2.650 [67.31] | 2.200 [55.88] | 44 | 2.500 [63.50] | 2.900 [73.66] | 90 | 443261-4 |
| 7060015-1 | 1 - 10 | .290 [7.37] | .970 [24.64] | .900 [22.86] | .45 [11.43] | 9 | .750 [19.05] | 1.150 [29.21] | 20 | 443261-3 |
| 7060015-2 | 1 - 15 | .540 [13.72] | 1.220 [30.99] | 1.150 [29.21] | .700 [17.78] | 14 | 1.000 [25.40] | 1.400 [35.56] | 30 | 443261-2 |
| 7060015-11 | 1 - 64 | 2.990 [75.95] | 3.670 [93.22] | 3.600 [91.44] | 3.150 [80.01] | 63 | 3.450 [87.63] | 3.850 [97.79] | 128 | 443261-1 |
| CUSTOMER PART NUMBER | CAVITY IDENT | G | F | E | D | C | B | A | NO OF POSN | PART NUMBER |

AMP Incorporated
Harrisburg, PA 17105-3608

PIN HEADER ASSEMBLY,
MINI-BOX, RIGHT ANGLE

AMP 00779 C-443261

SCALE 4:1 SHEET 1 OF 1 REV C