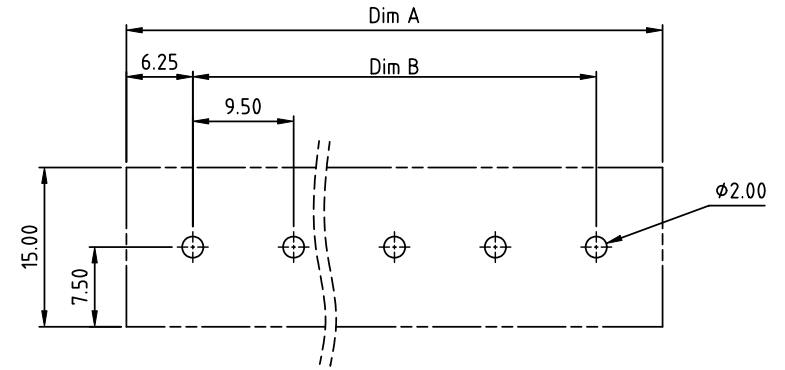
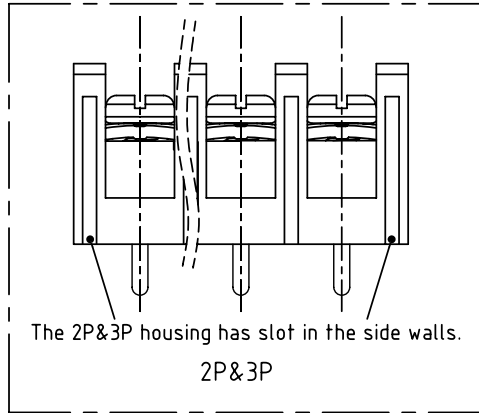
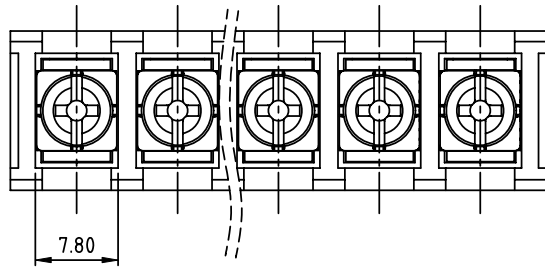
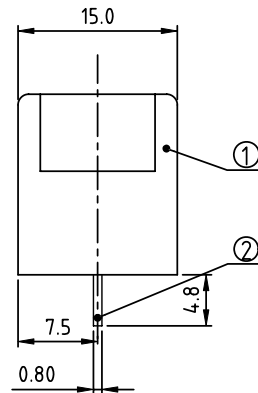
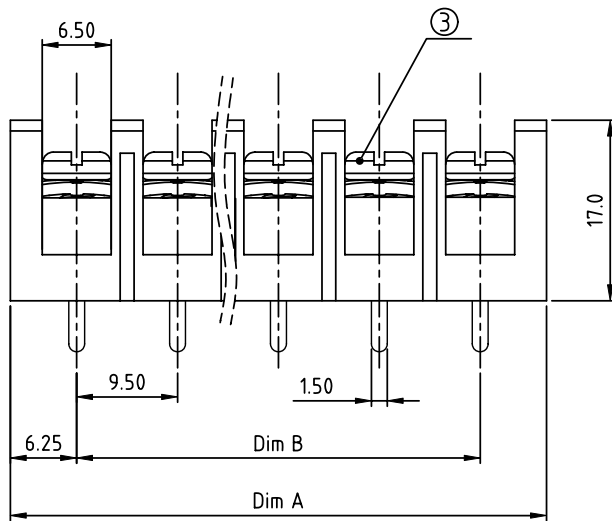


PRODUCT NUMBER	PITCH
YK501xx0x0JOG	9.50 mm



RECOMMENDED P.C.B LAYOUT
TOP VIEW



MATERIALS & ELECTRICAL

RATED VOLTAGE & CURRENT: 300 V, 20 A

WITHSTAND VOLTAGE: AC 2000 V/Min

INSULATION RESISTANCE: 1000 M Ω OR MORE AT DC 500 V

OPERATING TEMPERATURE RANG: -40 °C ~ +115 °C

SCREW TORQUE VALUE: 12 Lb-in.

WIRE RANGE: 22 - 12AWG

1) HOUSING: THERMOPLASTIC, UL 94 V-0 BLACK

2) TERMINAL: BRASS, 0.8t

3) TERMINAL SCREWS: STEEL, M3.5

APPROVAL: US

DIMENSION

Dim A	N \times 9.5+3.0
Dim B	(N-1) \times 9.5

N=Number of poles

Poles	Tolerance
2p-4p	± 0.20
5p-10p	± 0.30
11p-24p	± 0.40
25p-30p	± 0.60

PART NO.: YK 501xx 0 x 0 JOG

No. of poles
02 2 poles
03 3 poles
...
30 30 poles

Plated		
Code	Terminal	Screw
0	G/F	G/F
1	G/F	Zinc
2	Tin	G/F
3	Tin	Zinc

RoHS compliant
(lead<4%)
In copper Alloy

mat'l. code		surface ASME Y14.5	tolerance ASME Y14.5	projection	product family
ltr	ecn no	dr	date		TERMINAL BLOCK
				tolerances unless otherwise specified	title
				angles	TERMINAL BLOCK
				$X \pm 0.5$	BARRIER TYPE
				$X.X \pm 0.3$	scale
				$X.XX \pm 0.1$	MM
				dr	EVAN LU 061014
				enr	EVAN LU 061014
				chr	HANKE FENG 061014
				appd	SHI JUN 061014
sheet index		revision	A	FCI	
		sheet	1	dwg no	
				YK501xx0x0JOG	
				sheet 1 of 1	
				size	
				A4	
				type	
				CUSTOMER Drawing	