

3 PIN

4 PIN

5 PIN

6 PIN

7 PIN

**STANDARD SERIES**

SCREW - STAINLESS STEEL  
 HOUSING - ZINK, NICKEL PLATED  
 SOLDER TERMINAL - BRASS, ELECTROTIN PLATED  
 INSULATOR - POLYESTER, GREEN (UL94V-0)  
 CONTACT PIN - BRASS, SILVER PLATED

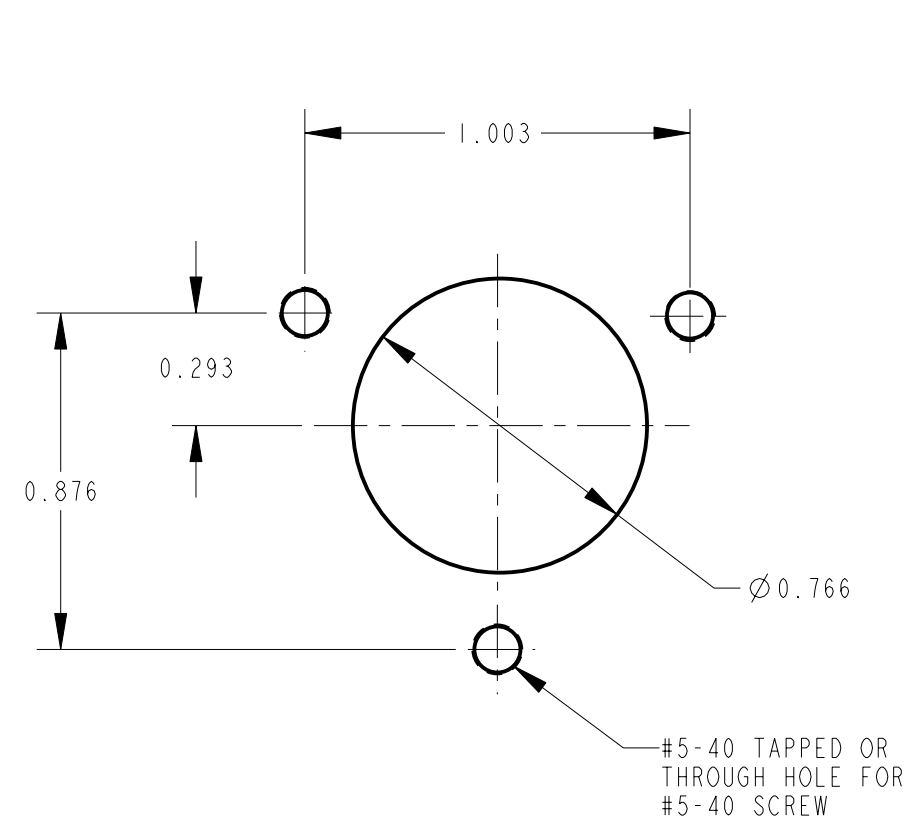
C - M  
 CONTACT PLATING  
 BLANK = SILVER (STANDARD)  
 AU = GOLD  
 HOUSING FINISH  
 BLANK = NICKEL PLATE (STANDARD)  
 B = BLACK  
 NO. OF CONTACTS:  
 3 = 3 CONTACTS  
 4 = 4 CONTACTS  
 5 = 5 CONTACTS  
 6 = 6 CONTACTS  
 7 = 7 CONTACTS

**PROFESSIONAL SERIES**

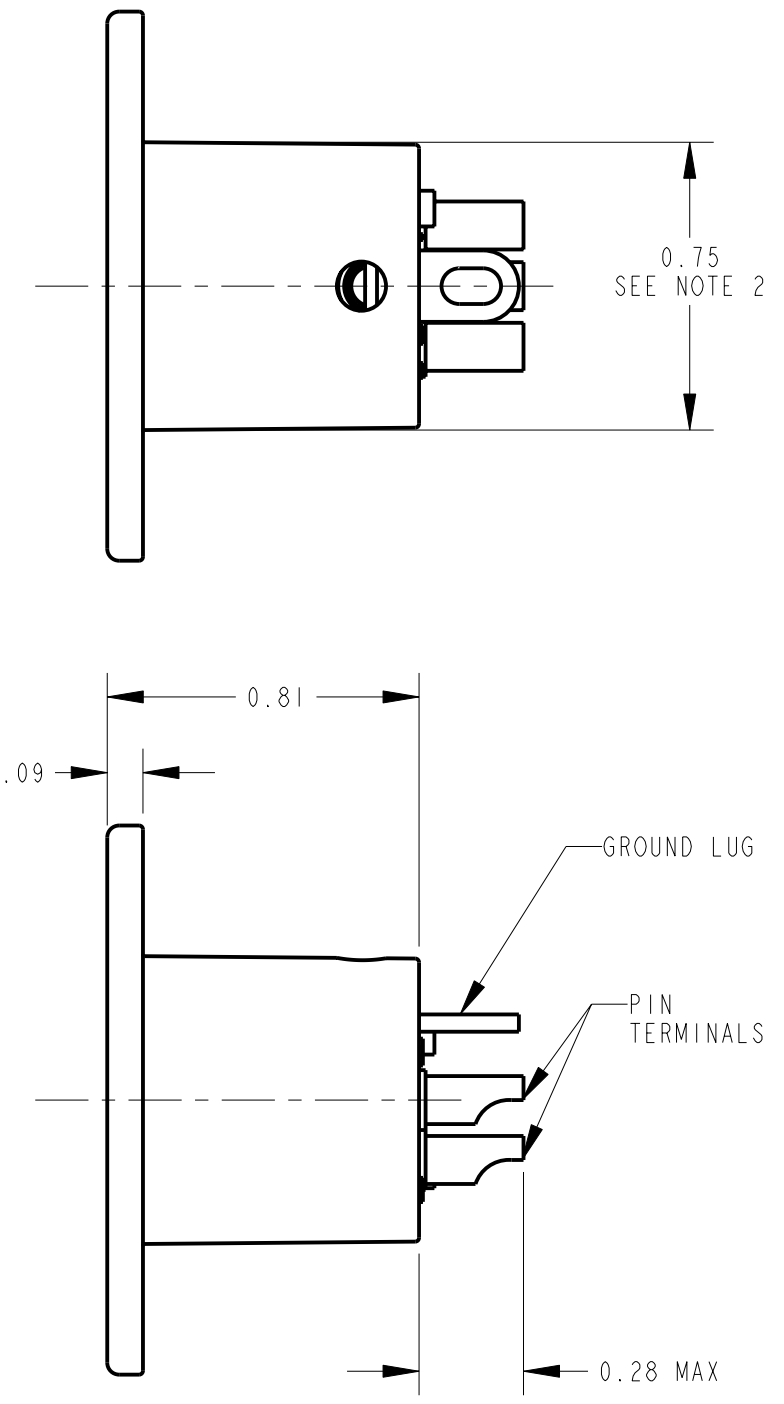
SAME AS ABOVE EXCEPT  
 CONTACT PIN - PHOSPHOR BRONZE, GOLD OVER NICKEL

QGP - 27  
 NO. OF CONTACTS:  
 3 = 3 CONTACTS  
 4 = 4 CONTACTS  
 5 = 5 CONTACTS  
 6 = 6 CONTACTS  
 7 = 7 CONTACTS

**NOTE:**  
 1. ALL DIMENSIONS ARE REFERENCE, UNLESS OTHERWISE SPECIFIED.



RECOMMENDED  
 PANEL CUT-OUT



G	21136	2-3-97	MM	RB
F	21070	2-3-97	MM	RB
E	21035	2-3-97	MM	RB
D	20627	1-20-96	SG	SG
C	20534	12-9-95	SG	RB
H	22838	9-30-99	JL	DG
REV	ECO NUMBER	DATE	BY	APVD
REVISIONS				

★ STAR SYMBOL DENOTES CRITICAL DIMENSION  
 UNLESS OTHERWISE SPECIFIED  
 1. ALL DIMENSIONS IN INCHES  
 - TWO PLACE DECIMALS ±0.01  
 - THREE PLACE DECIMALS ±0.005  
 - ANGLES ±1°  
 - ALL DIA. CONCENTRIC WITHIN 0.005 T.I.R.  
 2. FEATURES ON THE SAME CENTERLINE MUST BE ALIGNED WITHIN ±0.002  
 3. REMOVE ALL BURRS  
 DO NOT SCALE DRAWING

THIS DRAWING DESCRIBES A DESIGN CONSIDERED PROPRIETARY IN NATURE, DEVELOPED AND MANUFACTURED BY SWITCHCRAFT INC. AND IS RELEASED ON A CONFIDENTIAL BASIS FOR IDENTIFICATION PURPOSES ONLY.				
SIZE	WIDTH	MULT	LBS/M	TEMPER
FINISH		MATERIAL		
SPEC No.		SPEC No.		
FIRST USED ON		SCALE		
		2:1		
DATE DRAWN	BY	CHKD	APVD	<b>Switchcraft</b>
8-10-94	SG	SG	GHJ	
NAME				SHEET   OF
C SERIES MALE QG				REV
PART No.				H
C_M SERIES				

CUSTOMER DRAWING