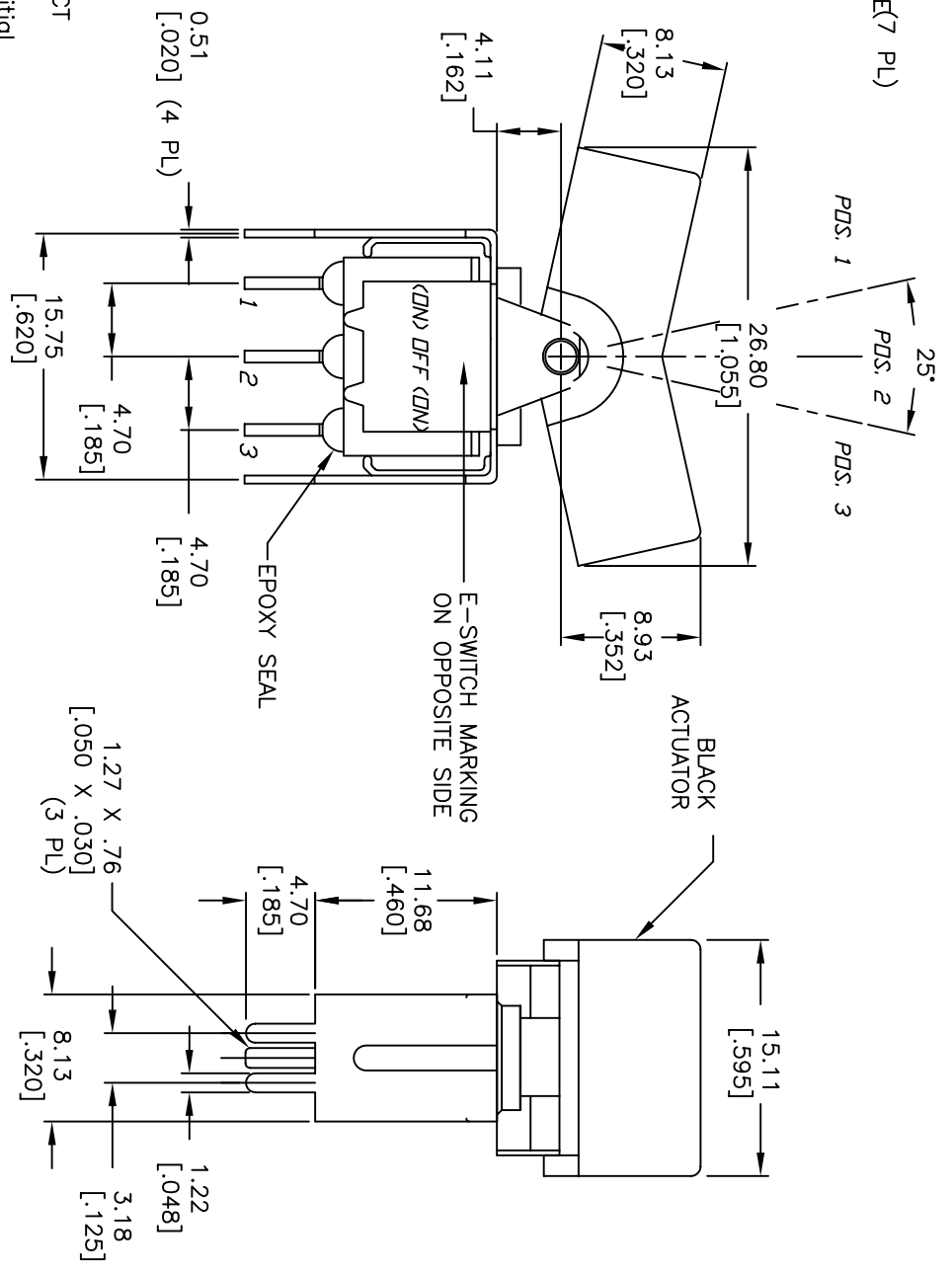


NOTES:

1. ALL DIMENSIONS IN MM [INCH]
2. GENERAL TOLERANCE: X.X=±0.4
X.XX=±0.25
3. TERM. NOS. FOR REF. ONLY
4. RATING: 5A@ 120V AC or 28V DC;
2A@ 250V AC
5. MATERIAL: FIXED TERMINAL & MOVING CONTACT
Copper Alloy w/SILVER PLATING
6. CONTACT RESISTANCE: 10mILLI Ohms max initial
@2-4VDC, 100mA for AG & AU
7. ELECTRICAL LIFE: 50,000 make-and-break
cycles at full load.
8. INSULATION RESISTANCE: 1,000M ohm min.
9. DIELECTRIC STRENGTH: 1000V RMS @sea level
10. OPERATING TEMP.: -30°C to 85°C
11. 2002/95/EC (ROHS) COMPLIANT



REV.	ECN NO.	DESCRIPTION	DATE	CHKD
E	16373	FIXED SWITCH PDS. NOTATION	8/23/06	BD
D	15970	REMOVED 11.9 DIM, ADD 8.92 DIM.	4/18/06	CT
C	15901	DIM FRDM 11.90 TO 13.00	3/27/06	PH
B	11603	REVISED TO ADD NOTES	10/16/02	CJB
-	-	ADD BLACK TO ROCKER	10/16/02	CJB
REV.	ECN NO.	DESCRIPTION	DATE	CHKD

SCALE	DATE	DR	DWG	REV
2:1	10/16/02	CB	T314007	E
TITLE				
300 SP-4 J3 BLK V52 Q E				

THE INFORMATION CONTAINED IN THIS DOCUMENT IS PROPRIETARY TO E-SWITCH AND IS NOT TO BE COPIED OR TRANSMITTED