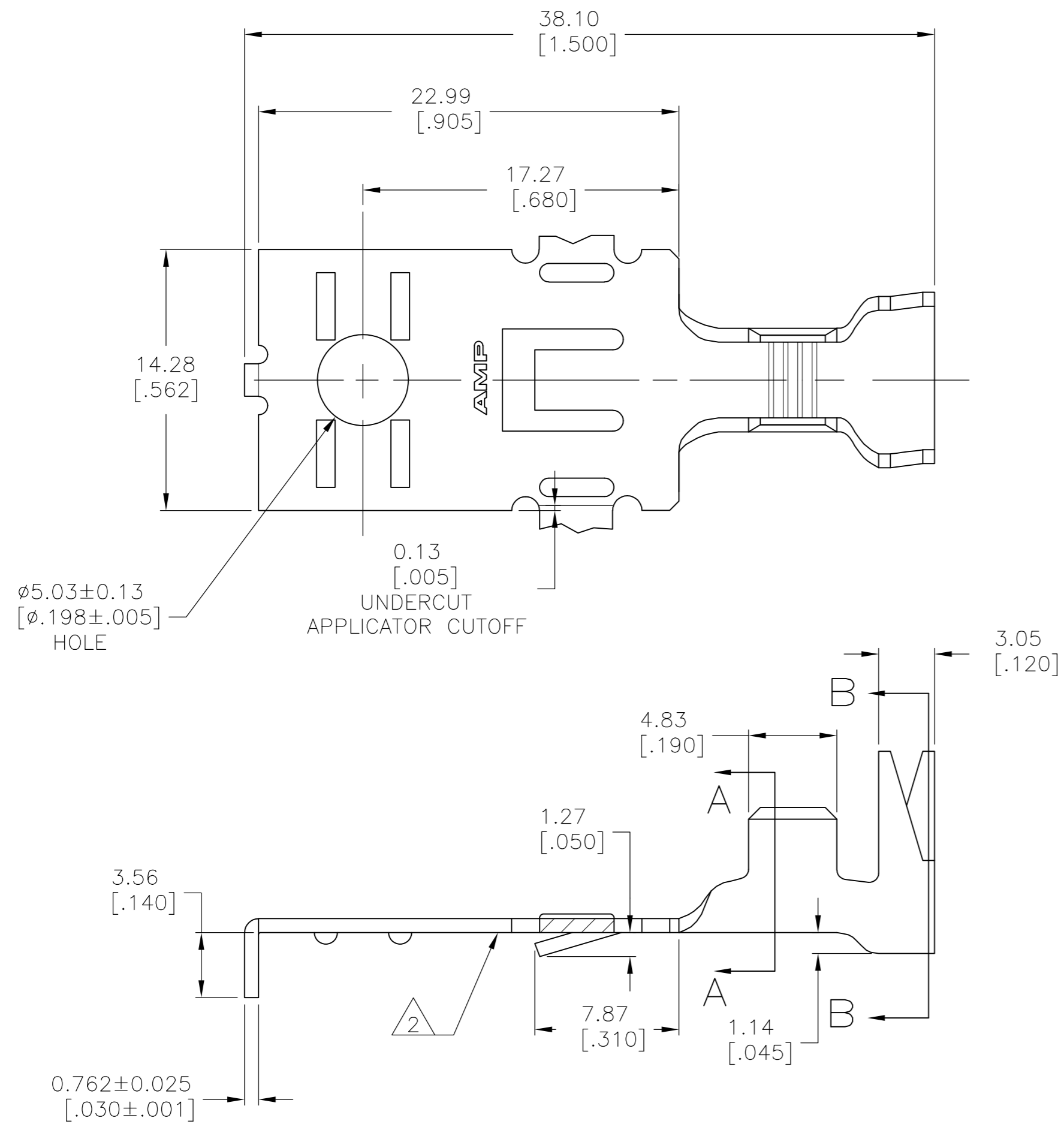
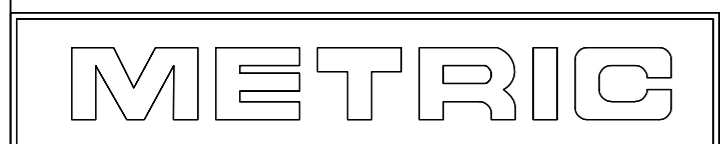
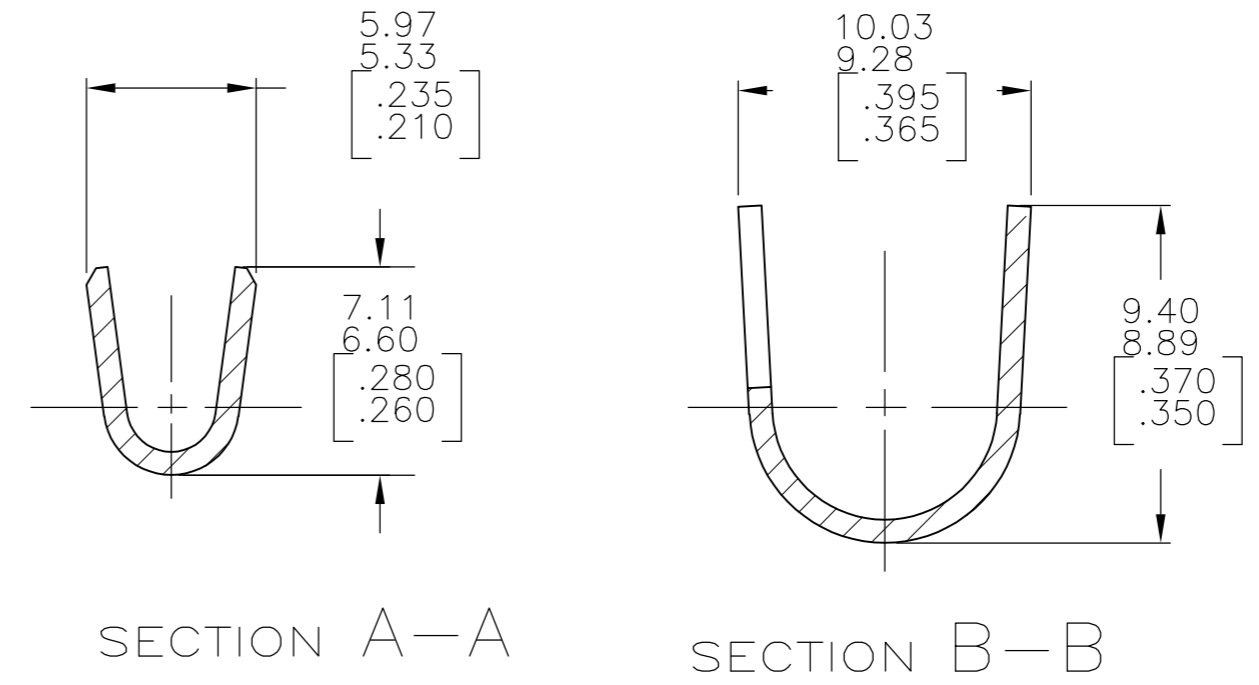


THIS DRAWING IS UNPUBLISHED. RELEASED FOR PUBLICATION
 © COPYRIGHT BY TYCO ELECTRONICS CORPORATION. ALL RIGHTS RESERVED.

LOC	DIST	REVISIONS			
P	LTR	DESCRIPTION	DATE	DWN	APVD
AF	50	A	REVISED PER ECR-08-007741	08JUL08	HMR GJ



- 1 CONTINUOUS STRIP ON REELS
- 2 VERTICAL BURRS NOT TO EXCEED 0.13 [.005] ALONG THIS EDGE
- 3 PRE-PLATED TIN.



F OR O	8.89 [.350]	6.35 [.250]	F	4.57 [.180]	3.45 [.136]	2 3.0mm ² 2 [12]	7.87 OR 2 (4.32) DIA 5.59 [.310] OR 2 [.170] DIA	1.3-5.5mm ² OR 2 (3.0mm ²) [16-10] OR 2 [12] AWG	63496-2																																																			
					3.23 [127]	5.0mm ² [10]			63496-1																																																			
					2.87 [113]	3.0mm ² [12]																																																						
					2.64 [104]	2.0mm ² [14]																																																						
					2.52 [099]	1.3mm ² [16]																																																						
TYPE	WIDTH	STRIP LENGTH ±0.38 [±.015]	TYPE	WIDTH	HEIGHT	WIRE	<table border="1"> <tr> <td>FINISH</td> <td>INSULATION RANGE</td> <td>WIRE RANGE</td> <td>PART NO.</td> </tr> <tr> <td>082 BRASS</td> <td>SEE TABLE</td> <td>1.3-5.5mm² OR 2 (3.0mm²) [16-10] OR 2 [12] AWG</td> <td>63496-2 63496-1</td> </tr> </table>			FINISH	INSULATION RANGE	WIRE RANGE	PART NO.	082 BRASS	SEE TABLE	1.3-5.5mm ² OR 2 (3.0mm ²) [16-10] OR 2 [12] AWG	63496-2 63496-1																																											
FINISH	INSULATION RANGE	WIRE RANGE	PART NO.																																																									
082 BRASS	SEE TABLE	1.3-5.5mm ² OR 2 (3.0mm ²) [16-10] OR 2 [12] AWG	63496-2 63496-1																																																									
THIS DRAWING IS A CONTROLLED DOCUMENT.							<table border="1"> <tr> <td>DWN</td> <td>4/5/94</td> <td rowspan="4"> Tyco Electronics Corporation Harrisburg, Pa 17105-3608 </td> </tr> <tr> <td>CHK</td> <td>4/5/94</td> </tr> <tr> <td>APVD</td> <td>4/5/94</td> </tr> <tr> <td>PRODUCT SPEC</td> <td></td> </tr> <tr> <td colspan="2">DIMENSIONS: mm [INCHES]</td> <td>108-1191</td> </tr> <tr> <td colspan="2">TOLERANCES UNLESS OTHERWISE SPECIFIED:</td> <td>114-2087</td> </tr> <tr> <td>0 PLC</td> <td>± -</td> <td>SIZE</td> <td>CAGE CODE</td> <td>DRAWING NO</td> <td>RESTRICTED TO</td> </tr> <tr> <td>1 PLC</td> <td>± -</td> <td>A2</td> <td>00779</td> <td>C=63496</td> <td>-</td> </tr> <tr> <td>2 PLC</td> <td>± 0.25 [.010]</td> <td colspan="3">CUSTOMER DRAWING</td> <td>SCALE 4:1</td> </tr> <tr> <td>3 PLC</td> <td>± -</td> <td colspan="3">SHEET 1 OF 1</td> <td>REV A</td> </tr> <tr> <td>4 PLC</td> <td>± -</td> <td colspan="3"></td> <td></td> </tr> <tr> <td>ANGLES</td> <td>± -</td> <td colspan="3"></td> <td></td> </tr> </table>			DWN	4/5/94	Tyco Electronics Corporation Harrisburg, Pa 17105-3608	CHK	4/5/94	APVD	4/5/94	PRODUCT SPEC		DIMENSIONS: mm [INCHES]		108-1191	TOLERANCES UNLESS OTHERWISE SPECIFIED:		114-2087	0 PLC	± -	SIZE	CAGE CODE	DRAWING NO	RESTRICTED TO	1 PLC	± -	A2	00779	C=63496	-	2 PLC	± 0.25 [.010]	CUSTOMER DRAWING			SCALE 4:1	3 PLC	± -	SHEET 1 OF 1			REV A	4 PLC	± -					ANGLES	± -				
DWN	4/5/94	Tyco Electronics Corporation Harrisburg, Pa 17105-3608																																																										
CHK	4/5/94																																																											
APVD	4/5/94																																																											
PRODUCT SPEC																																																												
DIMENSIONS: mm [INCHES]		108-1191																																																										
TOLERANCES UNLESS OTHERWISE SPECIFIED:		114-2087																																																										
0 PLC	± -	SIZE	CAGE CODE	DRAWING NO	RESTRICTED TO																																																							
1 PLC	± -	A2	00779	C=63496	-																																																							
2 PLC	± 0.25 [.010]	CUSTOMER DRAWING			SCALE 4:1																																																							
3 PLC	± -	SHEET 1 OF 1			REV A																																																							
4 PLC	± -																																																											
ANGLES	± -																																																											