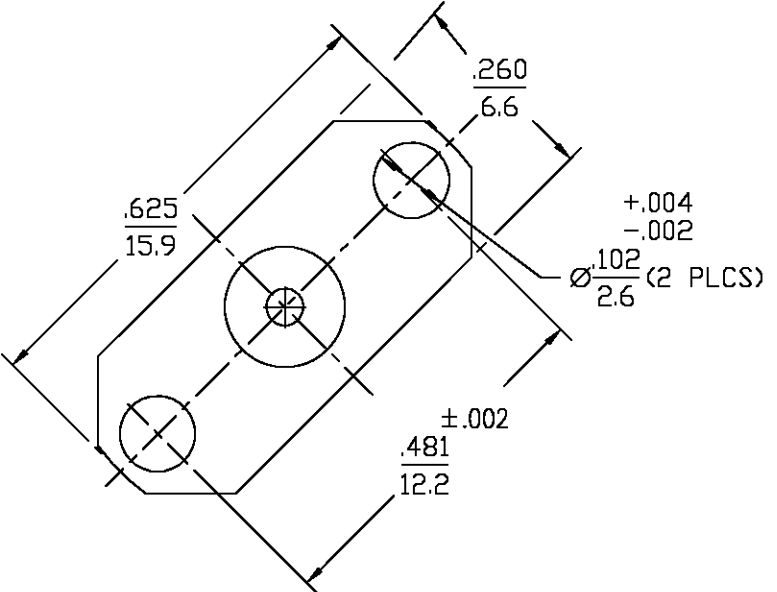
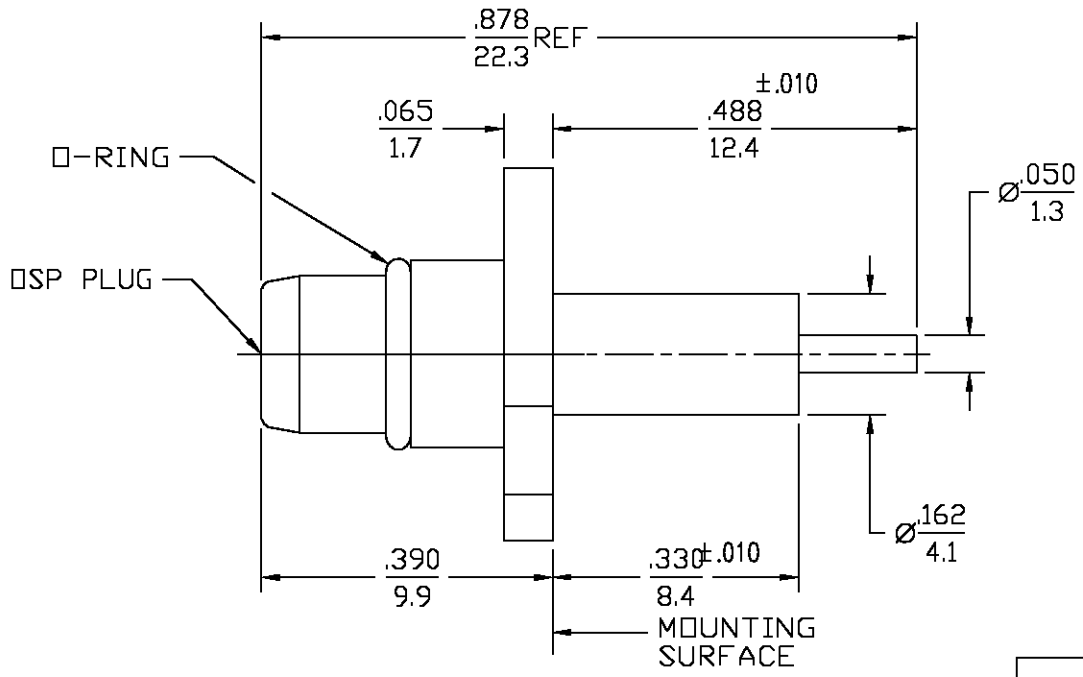


REVISIONS			
REV	DESCRIPTION	DATE	APPROVED
01 ₀	RELEASED	10/31/96	<i>D. Camello</i>
B	REVISED PER ECN 0020-0262-01	GV 01/06/03	JGH



ELECTRICAL	MECHANICAL	ENVIRONMENTAL
Nominal Impedance (Ohms) <u>50</u>	Force to Engage (Lbs MAX) <u>3</u>	TEMPERATURE RATING <u>-40° TO +105°C</u>
Frequency Range (GHz) DC to <u>6</u>	& Disengage (Lbs MAX) <u>1.0</u>	Vibration MIL-STD-1344, Method 2005, Condition V-F
Volt Rating (VRMS MAX) @ Sea Level	Center Contact Captivation	Shock MIL-STD-1344, Method 2004 Condition A
Return Loss <u>20.0 dB Min</u>	Axial (Lbs) <u>6.0</u>	Thermal Shock MIL-STD-1344 Method 1003, Condition A
Insertion Loss (dB MAX) <u>.05x √f(GHz)</u>	Weight (Grams) <u>TBD</u>	Moisture Resistance MIL-STD-1344 Method 1002, Cond B Type I
RF Leakage (dB MIN) (Fully Mated) <u>-(60-f(GHz))</u>		Corrosion - MIL-STD-1344, Method 1001, 48 Hrs
Corona, 70,000 Ft (VRMS MIN) <u>190</u>		
Dielectric Withstanding Voltage (VRMS MIN) @ Sea Level <u>500</u>		
Contact Resistance (Milliohms MAX)		
Center Contact <u>2.0</u>		
Outer Contact <u>5.0</u>		
RF High Potential @ Sea Level (VRMS MIN @ 5 MHz) <u>500</u>		
I.R.(Megohms MIN) <u>10000</u>		

.XXX = in
XX.X = mm (REF)

COMPONENT	MATERIAL	FINISH
HOUSING	BRASS PER ASTM-B-16, HALF HARD	GOLD PLATE PER MIL-G-45204
DIELECTRIC	TFE FLUOROCARBON PER ASTM-D-1457	N/A
CENTER CONTACT	BERYLLIUM COPPER PER ASTM-B-196 OR ASTM-B-197, ALLOY C17300, CONDITION H	GOLD PLATE PER MIL-G-45204
O-RING	FLOUROSILICONE PER MIL-R-25988, CLASS I, TYPE I.	N/A

UNLESS OTHERWISE SPECIFIED DIMENSIONS ARE IN INCHES	DRAWN BY <i>DDP</i> DATE 10/31/96	 AMP Incorporated 140 Fourth Avenue Waltham, MA 02451-7599				
FRAC. ± 1/64 DEC. ± .005 ANGLES ± 1°	CHECKED BY					
These drawings and specifications are the property of M/A COM Interconnect Div. and shall not be reproduced or copied or used in whole or in part as the basis for the manufacture or sale of item(s) without written permission.	APPT'D BY <i>D. Camello</i> 10/31/96					
USE ASS'Y PROCEDURE	NO. A.P. <u>N/A</u>	TITLE DSP 2 HOLE FLANGE MOUNT PLUG RECEPTACLE - STRAIGHT TERMINAL <table border="1"> <tr> <td>SIZE <u>B</u></td> <td>CODE IDENT NO. <u>26805</u></td> <td>4451-5002-09</td> <td>REV <u>01₀</u></td> </tr> </table>	SIZE <u>B</u>	CODE IDENT NO. <u>26805</u>	4451-5002-09	REV <u>01₀</u>
SIZE <u>B</u>	CODE IDENT NO. <u>26805</u>	4451-5002-09	REV <u>01₀</u>			
SCALE <u>6:1</u>		SHEET 1 OF 1				

CUSTOMER DRAWING

AMP PART # 1081365-1
SHEET 1 OF 1 REV B