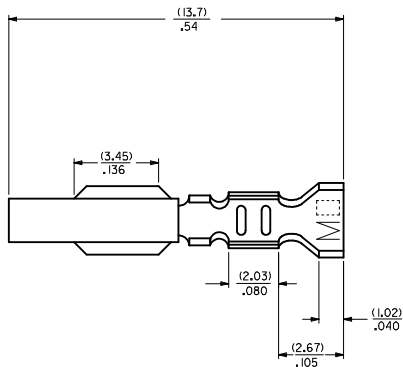


CHAIN FORM  
SCALE 5:1



**LEGEND**

88 18 -- \* -- (\*)

**MATERIAL**  
(.27) / .0106 THK.  
BLANK= BRASS  
A= PHOS BRONZE

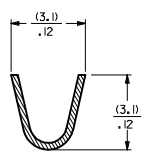
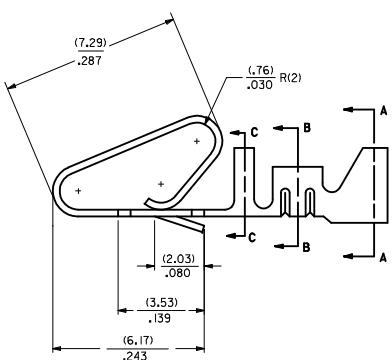
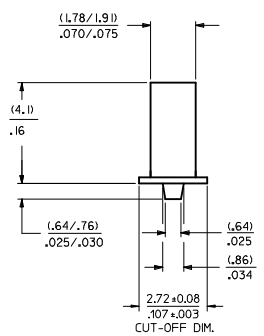
**OPTION CODE**  
BLANK=AS SHOWN

**WINDING SPEC**  
BLANK=CHAIN, PER WINDING DETAIL "B"  
L=L.OOSE

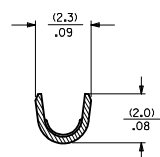
**PLATING**  
SEE NOTE 2

| EDP NO.    | ENGINEERING NO. |
|------------|-----------------|
|            | 88 18-(555)     |
|            | 88 18-(555)L    |
| 08-50-0008 | 88 18-(P909)    |
| 08-50-0023 | 88 18-(P909)L   |
| 40-01-1181 | 88 18-(999)     |
| 40-01-1182 | 88 18-A(999)    |
| 08-65-0128 | 88 18-A(555)    |
| 08-65-0129 | 88 18-A(555)L   |
| 08-52-0131 | 88 18-A(P909)   |
| 08-52-0132 | 88 18-A(P909)L  |
| 08-58-0135 | 88 18-A(550)    |
| 08-58-0136 | 88 18-A(550)L   |

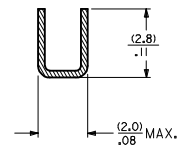
- NOTES:**
1. MATERIAL: SEE LEGEND
  2. FINISH:  
(P909) OVERALL HOT TIN DIP: (0.00254) / .000100 MIN.  
(550) SELECT GOLD: (0.000381) / .000015 MIN.  
OVERALL GOLD FLASH: (0.000051) / .000002 MIN.  
OVERALL NICKEL UNDERPLATE: (0.000761) / .000030 MIN.  
(555) SELECT GOLD: (0.000381) / .000015 MIN.  
OVERALL NICKEL UNDERPLATE: (0.000761) / .000030 MIN.
  3. PRODUCT SPECIFICATION: PS-08-50
  4. PACKAGING SPECIFICATION:  
LOOSE TERMINALS: PER PK-2759-001  
CHAIN FORM TERMINALS: NONE
  5. CRIMP ACCEPTS 18-22 GA. WIRE WITH (2.79) / .110 MAX. INSULATION DIA.
  6. DIMENSIONS GIVEN ACROSS CENTERLINES ARE SYMMETRICAL  
ABOUT THOSE CENTERLINES WITHIN HALF THE TOTAL TOLERANCE.
  7. TERMINAL FOR USE IN 41695 SERIES HOUSINGS.
  8. THIS PART CONFORMS TO CLASS B REQUIREMENTS OF COSMETIC SPECIFICATION PS-45499-002.



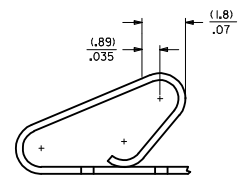
SECTION A-A



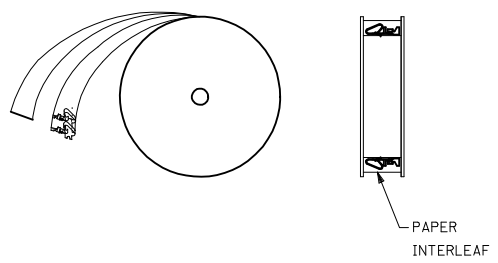
SECTION B-B



SECTION C-C



POST-PLATED SELECT GOLD LOCATION



WINDING DETAIL "B"

|  |  |  |                     |   |   |                      |                        |
|--|--|--|---------------------|---|---|----------------------|------------------------|
| <b>ADD WINDING DETAIL</b><br>IEC NO. UCP2014-4131<br>DRAWN/KIPER 2014/04/07<br>CHYKONGUEN 2014/04/07<br>APPR:FSM/TH 2014/04/21 | <b>QUALITY SYMBOLS</b><br>▽=0<br>▽=0<br>▽=0          | <b>GENERAL TOLERANCES (UNLESS SPECIFIED)</b> |                     | DIMENSION STYLE<br>MM/IN  | SCALE<br>---  | DESIGN UNITS<br>INCH | THIRD ANGLE PROJECTION |
|  |  | 4 PLACES ± mm ± INCH                         | DRAWN BY<br>JJS     | DATE<br>02/02/193   | TITLE<br>CRIMP STYLE<br>KK TYPE, .156 CENTERS<br>W/ANTIFISHOOKING FEATURE |                      |                        |
|  |  | 3 PLACES ± .010                              | CHECKED BY<br>PATEL | DATE<br>02/02/193   | MATERIAL NO. SEE CHART<br>DOCUMENT NO. SD-8818                            |                      |                        |
|  |  | 2 PLACES ± 0.25 ± .014                       | APPROVED BY<br>LENZ | DATE<br>02/02/193   |   |                      |                        |
| 1 PLACE ± 0.36 ± ---   | ANGULAR ±1/2°  |  | SIZE<br>D           | THIS DRAWING CONTAINS INFORMATION THAT IS PROPRIETARY TO MOLEX INCORPORATED AND SHOULD NOT BE USED WITHOUT WRITTEN PERMISSION |   |                      |                        |
| 0 PLACE ± ±  | DRAFT WHERE APPLICABLE MUST REMAIN WITHIN DIMENSIONS |  | SHEET NO. 1 OF 1    |   |   |                      |                        |