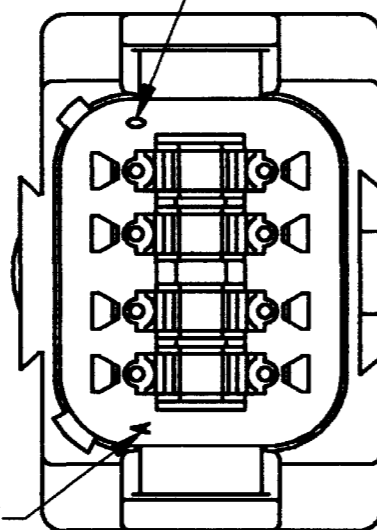


3-D VIEW

EX. OF YEAR 2000



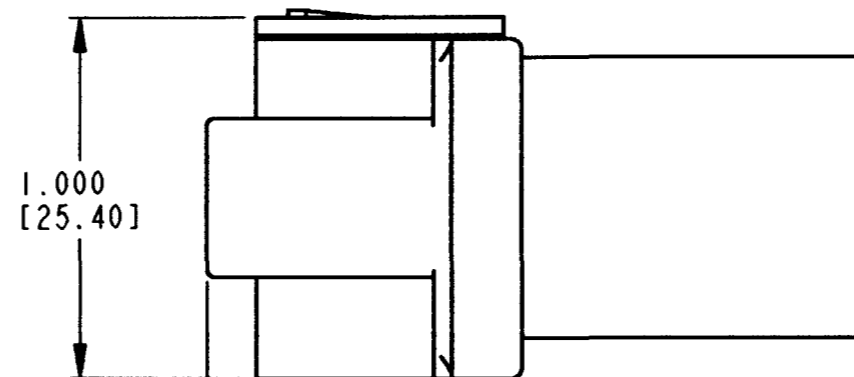
EX. OF MONTH JANUARY

DATE LEGEND

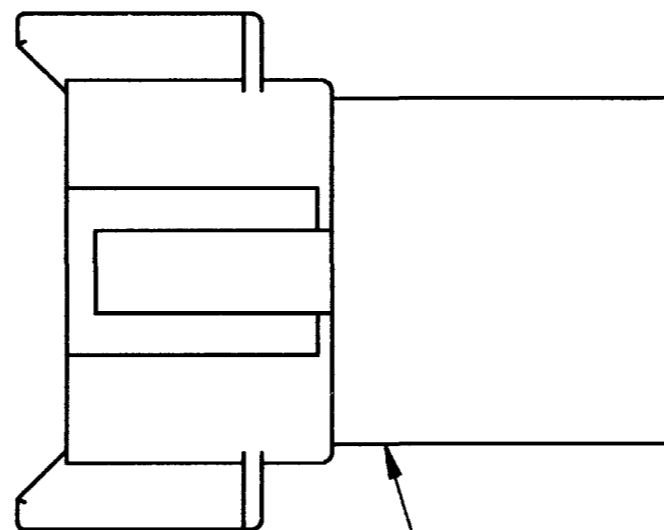
YEAR TO BE REPRESENTED BY LAST NUMERICAL DIGIT. EX. 0 = 2000.
MONTH USES SEQUENTIAL ALPHA CHARACTERS. EX. A = JANUARY.

5. SHELL MATERIAL: PLASTIC
SEAL MATERIAL: RUBBER
4. THIS RECEPTACLE MATES WITH THE DT06-08SA-**** PLUG (**** = ALL MODIFICATIONS).
CONSULT FACTORY FOR MODIFICATIONS.
3. FOR CONTACTS AND WIRE PERFORMANCE AND APPLICATION CHARACTERISTICS
SEE ENVELOPE DRAWING 0425-015-0000 AND 0425-017-0000.
2. DIMENSIONS ARE ±.025[0.63] UNLESS OTHERWISE SPECIFIED.
1. DIMENSIONS ARE IN INCHES [MILLIMETERS].

NOTES:



1.000
[25.40]

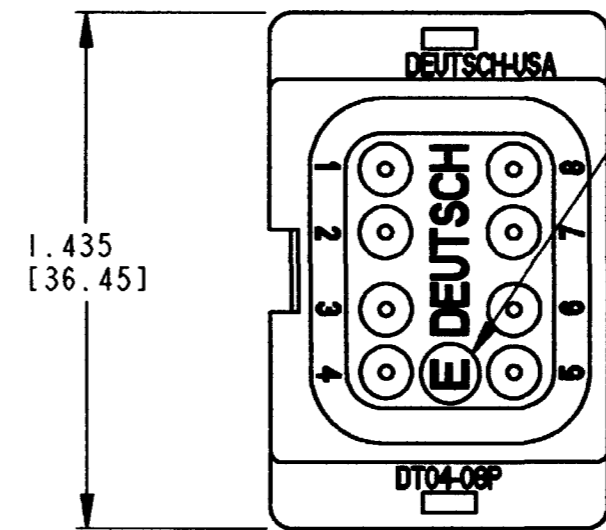


1.798
[45.67]

RECEPTACLE HOUSING

REV		REVISIONS		
NC	SYM	DESCRIPTION	DATE	APPROVED
	NC	REDRAWN/REPLACES PREVIOUS		
		RELEASE PER E.O. P19032	9-8-05	RDR

-E- SYMBOL DESIGNATES REDUCED WIRE SEAL.



1.435
[36.45]

CONTACT SIZE	MIN. INSUL O.D.	MAX. INSUL O.D.	WIRE RANGE [mm ²]
16	.053 [1.35]	.120 [3.05]	14-20 AWG [2.0-0.5]

SIGNATURE & DATE	
DR	A. MALAGON 31AUG05
CHK	[Signature] 9/8/05
PE	[Signature] 9/8/05
APPD	R. Reed 9-8-05
SCALE	NONE WT

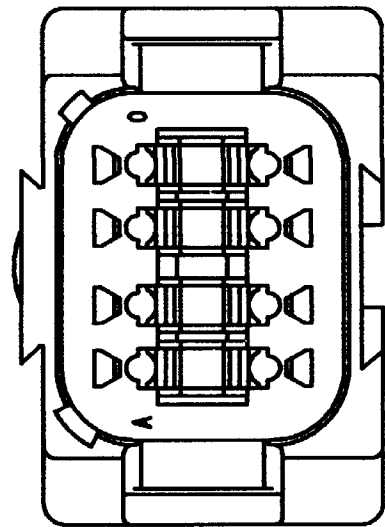
8 WAY RECEPTACLE
REDUCED WIRE SEALS
-C015 MOD.
DT SERIES

ENVELOPE

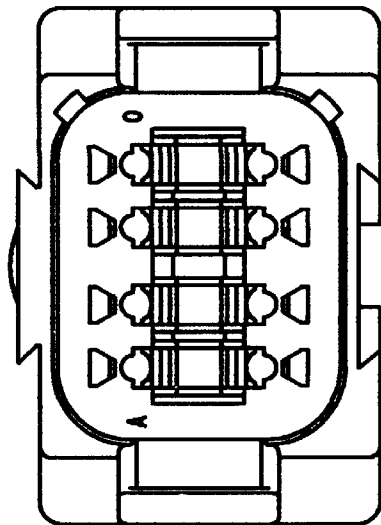
CP	MATL. CODE
The Deutsch Company DEUTSCH I.P.D. 3850 INDUSTRIAL AVE. HEMET, CALIF. 92545	
B DT04-08P*-C015	
DWG SIZE	SHEET 1 OF 2

REV NC	DT04-08P*-C015	REVISIONS		
	SYM	DESCRIPTION	DATE	APPROVED
	NC	SEE SHEET 1	9-8-05	RDR

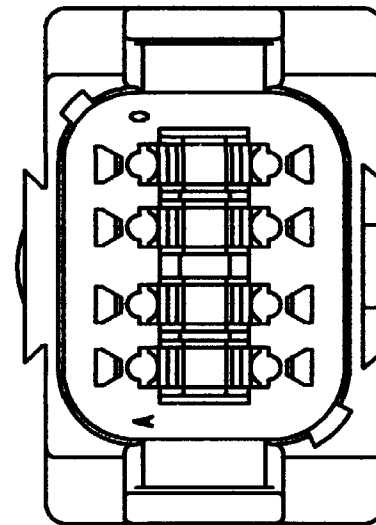
PART NO.
DT04-08PA-C015
KEY ARR. -A-
COLOR: GREY



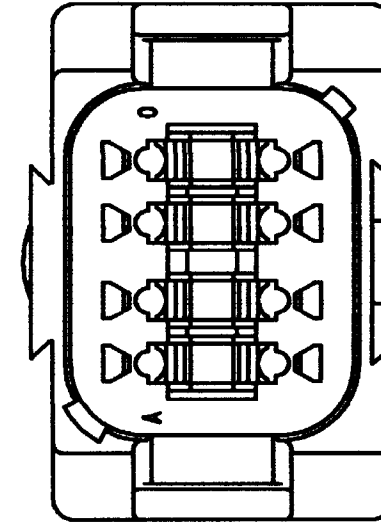
PART NO.
DT04-08PB-C015
KEY ARR. -B-
COLOR: BLACK



PART NO.
DT04-08PC-C015
KEY ARR. -C-
COLOR: GREEN



PART NO.
DT04-08PD-C015
KEY ARR. -D-
COLOR: BROWN



NOTES:

SIGNATURE & DATE		8 WAY RECEPTACLE REDUCED WIRE SEALS -C015 MOD. DT SERIES	CP	MATL. CODE
DR	A. MALAGON 31AUG05		The Deutsch Company	
CHK	B. Byrd 9/7/05		DEUTSCH I.P.D. 3850 INDUSTRIAL AVE. HEMET, CALIF. 92545	
PE	Paul Johnson 9/2/05		B DT04-08P*-C015	
APPD	S. Beard 9-2-05		DWG SIZE	CODE 11139
SCALE	NONE	WT	ENVELOPE	