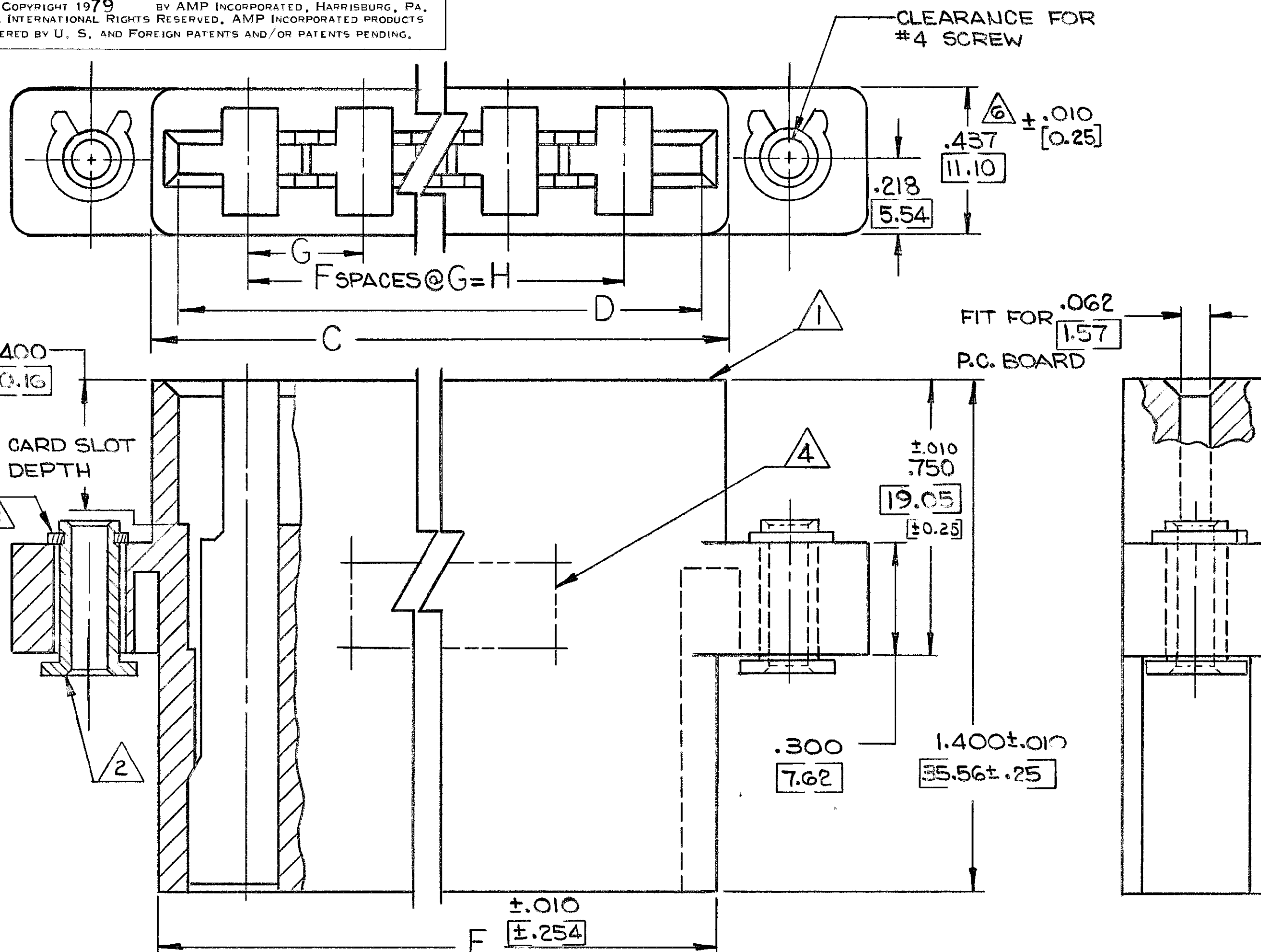
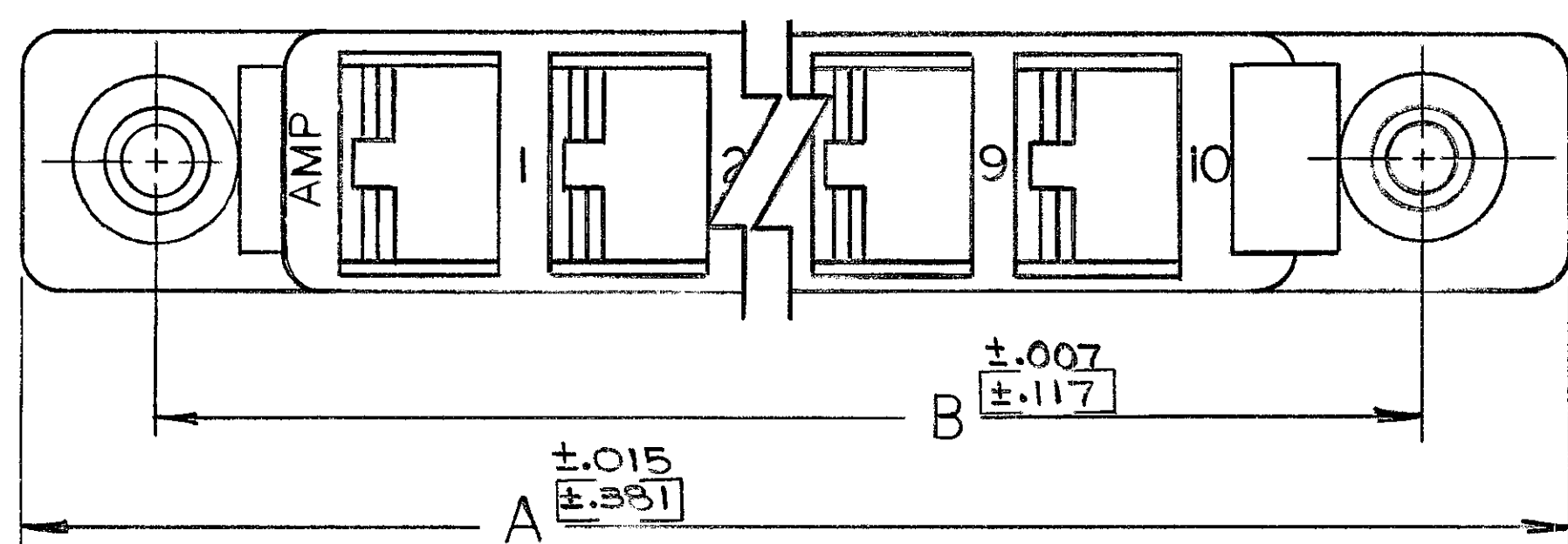


© COPYRIGHT 1979 BY AMP INCORPORATED, HARRISBURG, PA. ALL INTERNATIONAL RIGHTS RESERVED. AMP INCORPORATED PRODUCTS COVERED BY U. S. AND FOREIGN PATENTS AND/OR PATENTS PENDING.

REVISIONS						
P	F	ZONE	LTR	DESCRIPTION	DATE	APPROVED
	✓		O	WAS 5257-40		
A	✓		A	REVISED 6316 m.s.	10-79	
✓			B	REVISED PER ECI ADD 188	5/11/84	E.P.
✓			C	REV PER AD 1822	7-2-87	CBW
✓			D	REV PER 0010-0014-96	1-96	P.B.
✓			E	REV PER EC 0G3C-233-01	03OCT01	MM



- ① HOUSING-MATERIAL: GLASS-FILLED POLYESTER, COLOR=NATURAL.
- ② BUSHING-MATERIAL: STAINLESS STEEL, PASSIVATE FINISH.
- ③ RETAINING RING-MATERIAL: ZINC PLATED CARBON SPRING STEEL.
- ④ "AMP", PART NO., & DATE CODE MARKED THIS AREA.
- 5. DIMENSIONS IN BRACKETS ARE METRIC EQUIVALENTS.
- ⑥ MEASURE ACROSS MOUNTING EARS. MAY GO TO .020 [0.5] OVER NOMINAL AT TOP OF HOUSING.
- 7. VOID CORING OPTIONAL.



OBSOLETE

H	G	F	E	D	C	B	A	NO. OF POSITIONS	PART NO
.624 [15.85]	.312 [7.92]	2	1.114 [28.30]	1.024 [26.01]	1.164 [29.57]	1.538 [39.07]	1.972 [50.09]	3	531702-3
2.808 [71.32]	.312 [7.92]	9	3.298 [83.77]	3.208 [81.48]	3.343 [85.04]	3.722 [94.54]	4.156 [105.56]	10	531702-2
.312 [7.92]	.312 [7.92]	1	.602 [15.30]	.712 [18.08]	.352 [8.94]	1.226 [31.14]	1.660 [42.16]	2	531702-1

UNLESS OTHERWISE SPECIFIED DIMENSIONS ARE IN INCHES TOLERANCES ON: DECIMALS ±.005 [0.127] ANGLES ±	CONTRACT NO		<b>AMP</b>   AMP INCORPORATED Harrisburg, Pa.	
	DR Debra Kelly 6-22-79			
	MATERIAL		NAME HOUSING ASSEMBLY, HIGH CURRENT CONNECTOR, WITH FLOATING BUSHING	
	FINISH		SIZE CODE IDENT NO DRAWING NO <b>C 00779 531702</b>	
OTHER APPD		SCALE 4-1		SHEET 1 OF 1