

# Customer Information Sheet

DRAWING No.: R30-500X02

SHEET 2 OF 2

IF IN DOUBT - ASK

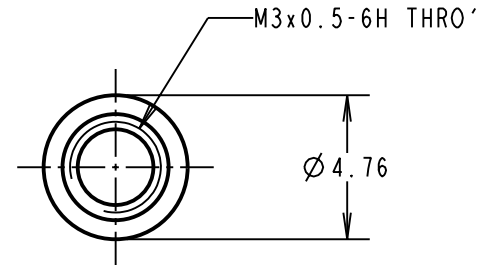
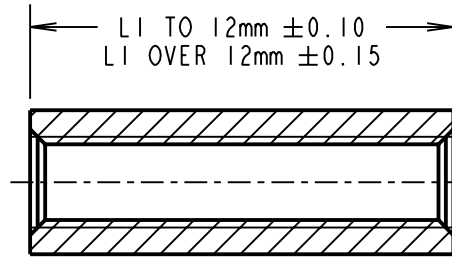
©

NOT TO SCALE

THIRD ANGLE PROJECTION

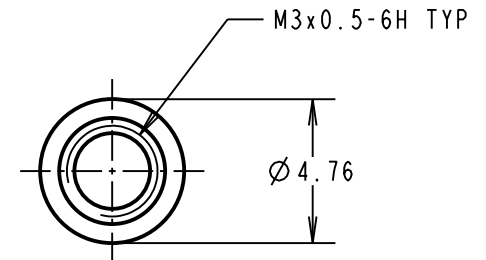
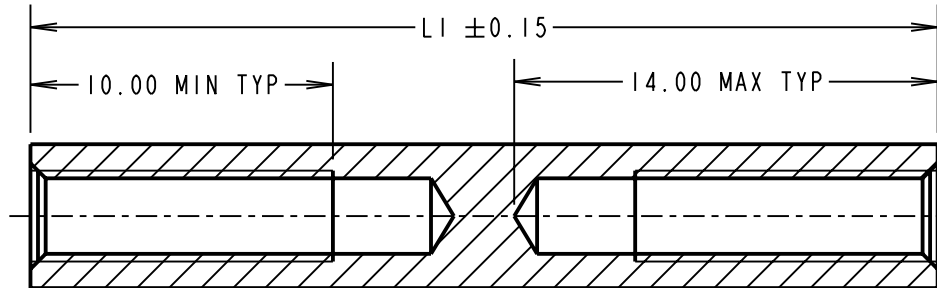
ALL DIMENSIONS IN mm

ALL SPACERS UP TO  
& INCLUDING 25mm LONG



25mm SPACER DOES NOT REQUIRE  
THE TAPPED HOLE TO BE THRO, BUT  
MUST HAVE A MINIMUM THREAD LENGTH  
OF 10mm FROM BOTH ENDS.

ALL SPACERS  
OVER 25mm LONG



PART No.	LI
R30-5000402	4.00
R30-5000502	5.00
R30-5000602	6.00
R30-5000702	7.00
R30-5000802	8.00
R30-5000902	9.00

PART No.	LI
R30-5001002	10.00
R30-5001102	11.00
R30-5001202	12.00
R30-5001302	13.00
R30-5001402	14.00
R30-5001502	15.00

PART No.	LI
R30-5001602	16.00
R30-5001802	18.00
R30-5002002	20.00
R30-5002502	25.00
R30-5005502	55.00

ORDER CODE:  
**R30-500X02**  
LENGTH LI IN mm

CP	6	19.03.10	10710
NAME	ISS.	DATE	C/NOTE
APPROVED:		C.PENROSE	
CHECKED:		R.ADDE	
DRAWN:		WJ BOURNE	
CUSTOMER REF.:			
ASSEMBLY DRG:			

**HARWIN**

HARWIN USA  
TEL: 603 893 5376  
FAX: 603 893 5396  
mis@harwin.com

HARWIN Europe (UK)  
TEL: 023 9231 4545  
FAX: 023 9231 4590  
mis@harwin.co.uk

HARWIN Asia  
TEL: +65 6 779 4909  
FAX: +65 6 779 3868  
mis@harwin.com.sg

THIS DRAWING AND ANY  
INFORMATION OR DESCRIPTIVE  
MATTER SET OUT HEREON ARE  
CONFIDENTIAL AND COPYRIGHT  
PROPERTY OF THE HARWIN  
GROUP AND MUST NOT BE  
DISCLOSED, LOANED, COPIED  
OR USED FOR MANUFACTURING,  
TENDERING OR FOR ANY  
OTHER PURPOSE WITHOUT  
THEIR WRITTEN PERMISSION.

TOLERANCES  
X. = ±1mm  
X.X = ±0.25mm  
X.XX = ±0.10mm  
X.XXX = ±0.01mm  
ANGLES = ±5°  
UNLESS STATED

MATERIAL:  
BRASS  
CW614N M TO BS EN 12164  
(CuZn39Pb3)  
FINISH: NICKEL  
S/AREA: mm<sup>2</sup>

TITLE:  
M3 CIRCULAR  
FEMALE SPACER  
DRAWING NUMBER:  
**R30-500X02**

SHT  
2 OF 2