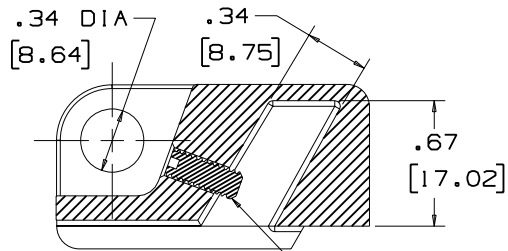
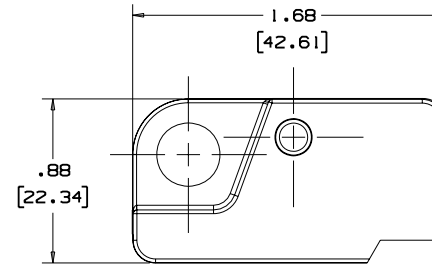
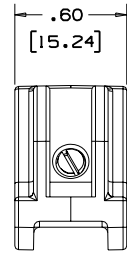
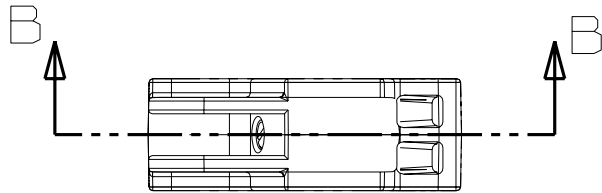


THIS COPY IS PROVIDED ON A RESTRICTED BASIS AND IS NOT TO BE USED IN ANY WAY DETRIMENTAL TO THE INTERESTS OF PANDUIT CORP.



SECTION B-B
10-32 X 1/2" LONG STAINLESS STEEL
SLOTTED CUP POINT SET SCREW.

- NOTES:
 1. COLOR - RED
 2. PACKAGING - 1 EACH. WITH INSTRUCTION SHEET AND PATENT INFORMATION.
 3. DIMENSION IN BRACKETS ARE METRIC.

CAD FILENAME/LAYERS 100619XC_C10084_PSL-WS_01.prt

PANDUIT CORP. TINLEY PARK, ILLINOIS

PSL-WS
WALL SWITCH LOCKOUT

UNLESS OTHERWISE SPECIFIED,
DIMENSIONAL TOLERANCES ARE:
 (.X) ± (.XXX) ±
 (.XX) ± ANGLES ±

UNLESS OTHERWISE SPECIFIED,
ALL DIMENSIONS ARE GIVEN
IN INCHES, THIRD ANGLE PROJECTION.

REV	DATE	BY	CHK	DESCRIPTION	ECN	R	CUST	SUP
I	10-5-06	RVU		MISC. REVISION.	4712	R		
R	10-8-03	RVU		DRAWING RELEASE	2965	R		

DRAWN BY RVU	MAT'L; RED NYLON	SCALE FULL
DATE 10-8-03		DRAWING NO. C10084
CHK'D		DWG A SIZE