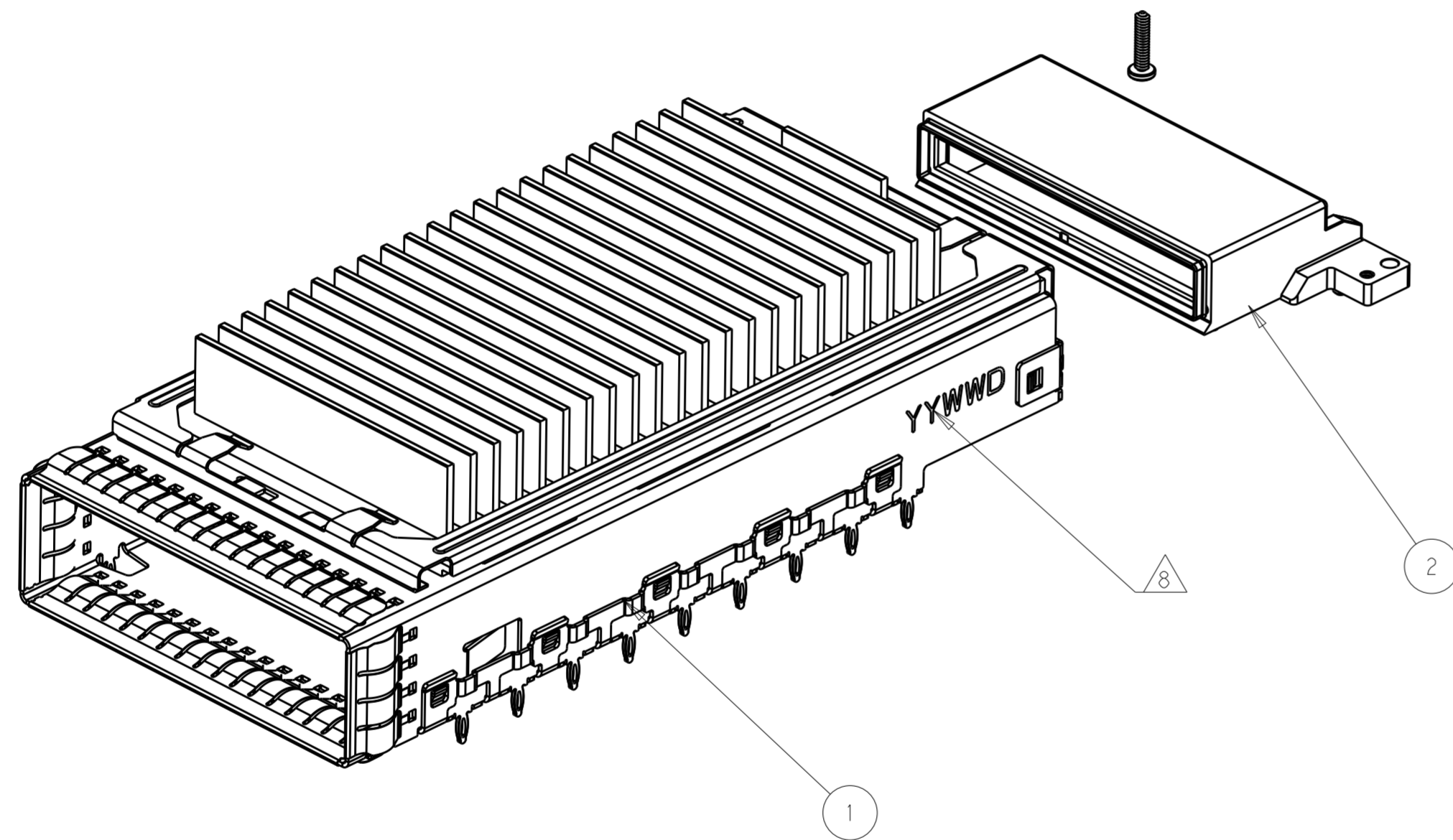


THIS DRAWING IS UNPUBLISHED. RELEASED FOR PUBLICATION 20  
 © COPYRIGHT 20 BY - ALL RIGHTS RESERVED.

REVISIONS					
P	LTR	DESCRIPTION	DATE	DWN	APVD
1		PRELIMINARY DRAWING	17JUN2015	AD	SH
2		ADD NEW DASH NUMBER	19JUN2015	AD	SH
5		REVISE BOM	28UG2015	AD	SH
8		ADD NEW DASH NUMBER -3	07JUN2018	AD	SH



1. MATERIAL :CAGE :0.4MM THICK NICKEL SILVER ALLOY;  
 EMI SPRING: COPPER ALLOY;  
 HEAT SINK CLIP: STAINLESS STEEL;  
 HEAT SINK:ALUMINUM ALLOY;  
 RECEPTACLE COVER:ZINC ALLOY;

2. FINISH: EMI SPRING :1.27um NICKEL PLATING OVER ALL;  
 HEAT SINK:BLACK ANODIZED COATING;  
 RECEPTACLE COVER: 1.27um MIN NICKEL PLATING OVER COPPER PLATING;  
 HEAT SINK CLIP:PASSIVATE;

3.MATES WITH CFP MSA COMPLIANT TRANSCEIVERS.

4.DATUM AND BASIC DIMENSION ESTABLISHED BY CUSTOMER.

5.MINIMUM PC BOARD THICKNESS: SIGLE SIDE APPLICATIONS 2.0MM MIN.  
 BELLY TO BELLY APPLICATION:3.0MM MIN

6.PADS AND VIAS CHASSIS GROUND;

7:REFERENCE APPLICATION SOEC 114-32146 FOR  
 RECOMMENDED DRILL HOLE DIAMETER AND PLATING THICKNESS.

8.DATE CODE LOCATED AT APPROXIMATE AREA AS SHOWN.

THIS PRINT IS  
**PRELIMINARY**  
 UNQUALIFIED PRODUCT  
 CONTACT PRODUCT ENGINEERING  
 BEFORE USING THIS PRINT

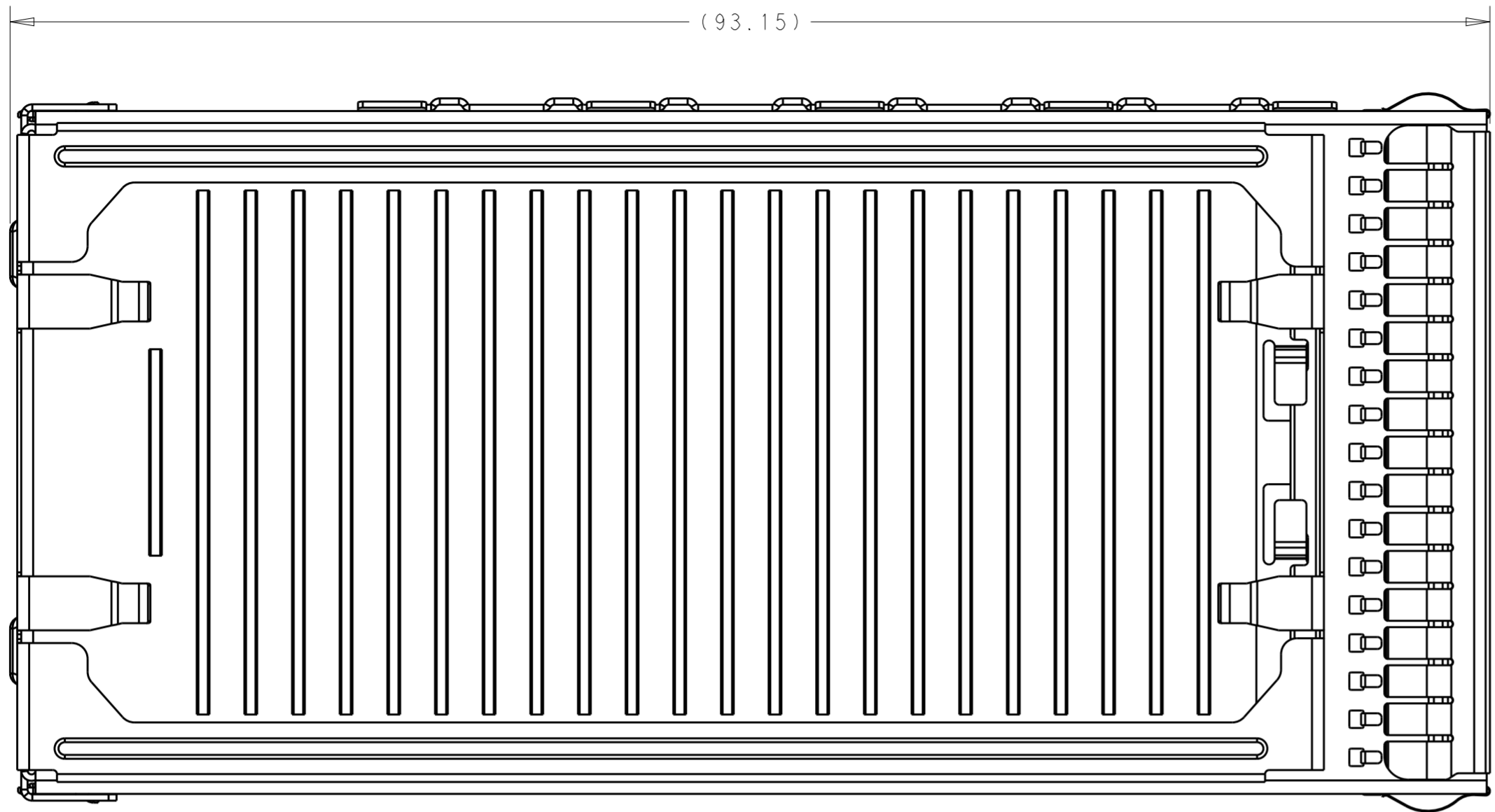
2	2	2	2292789-1	SCREW	3
1	1	1	2274846-1	RECEPTACLE COVER ASSEMBLY	2
1	-	-	2293277-6	CAGE ASSEMBLY WITH H/S,CFP2 1X1	1
-	1	-	2293277-2	CAGE ASSEMBLY WITH H/S,CFP2 1X1	
-	-	1	2293277-1	CAGE ASSEMBLY WITH H/S,CFP2 1X1	
-3	-2	-1	PAR NUMBER	DESCRIPTION	ITEM

THIS DRAWING IS A CONTROLLED DOCUMENT.

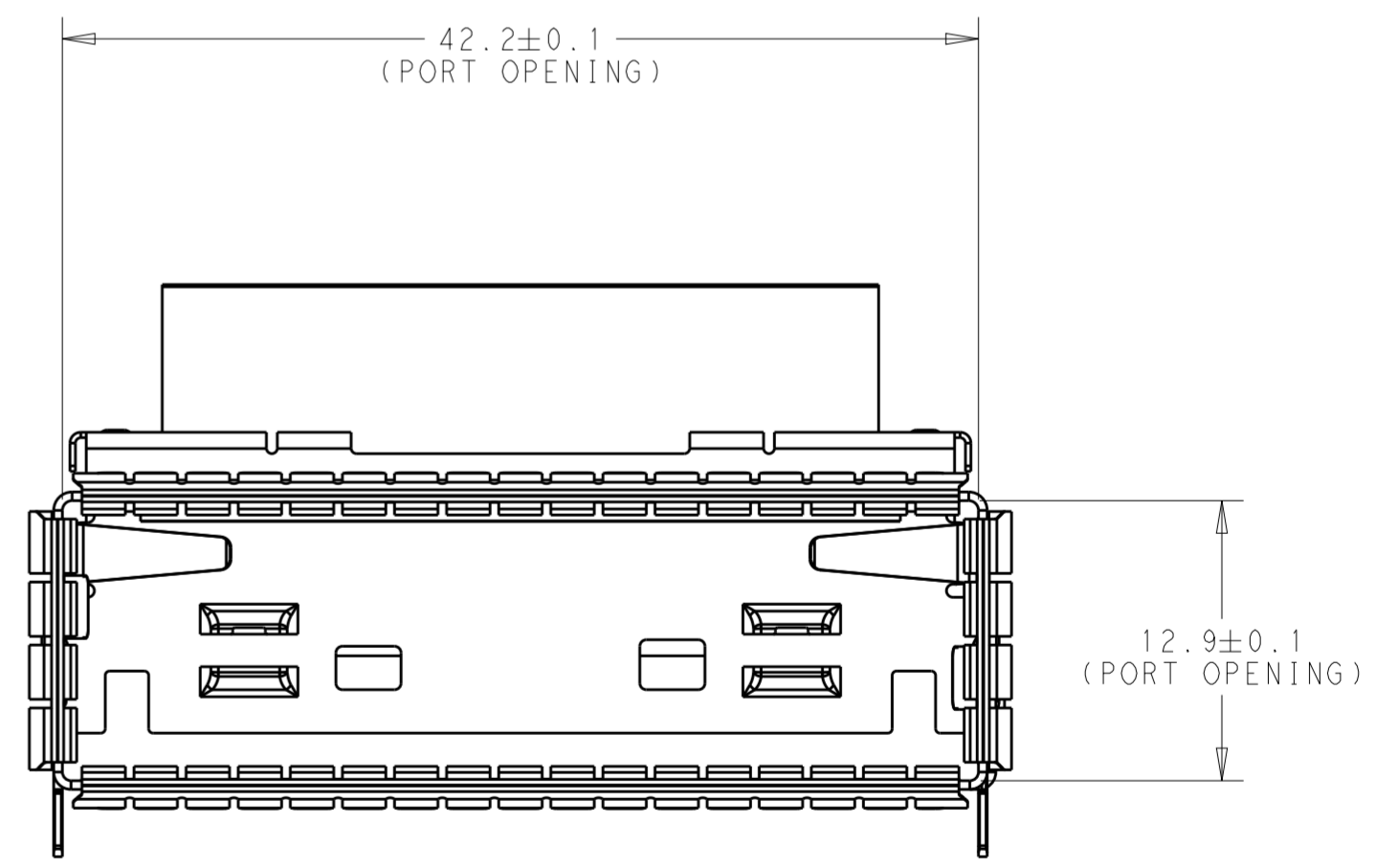
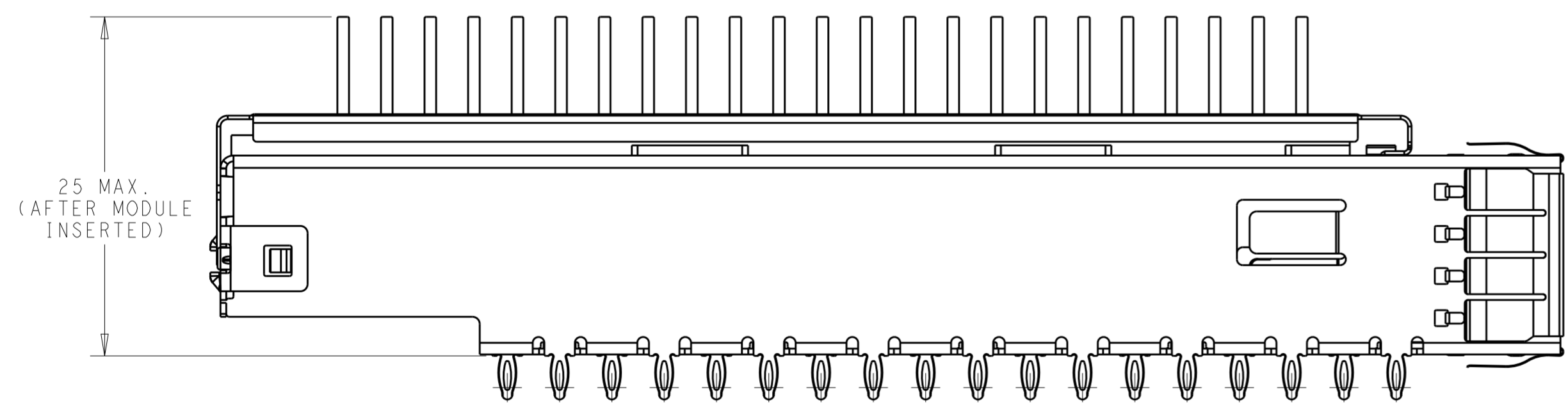
DWN ANDY.XIE 17JUN2015	 TE Connectivity	<b>PRELIMINARY</b>
CHK - -		
APVD SEAN.HAN 17JUN2015	NAME HARDWARE KIT FOR CFP2 1X1	PRESS FIT (CAGE, HS, HS CLIP, COVER, SCREW)
PRODUCT SPEC 108-32103	APPLICATION SPEC 114-32146	
MATERIAL SEE NOTES	FINISH SEE NOTES	SIZE A2
WEIGHT -	SCALE 1:1	DRAWING NO C-2274842
Customer Drawing	SHEET 1	OF 7
	REV 8	

THIS DRAWING IS UNPUBLISHED. RELEASED FOR PUBLICATION 20  
 © COPYRIGHT 20 BY - ALL RIGHTS RESERVED.

REVISIONS				
P	LTR	DESCRIPTION	DATE	APVD
-		SEE SHEET 1	-	-



THIS PRINT IS  
**PRELIMINARY**  
 UNQUALIFIED PRODUCT  
 CONTACT PRODUCT ENGINEERING  
 BEFORE USING THIS PRINT

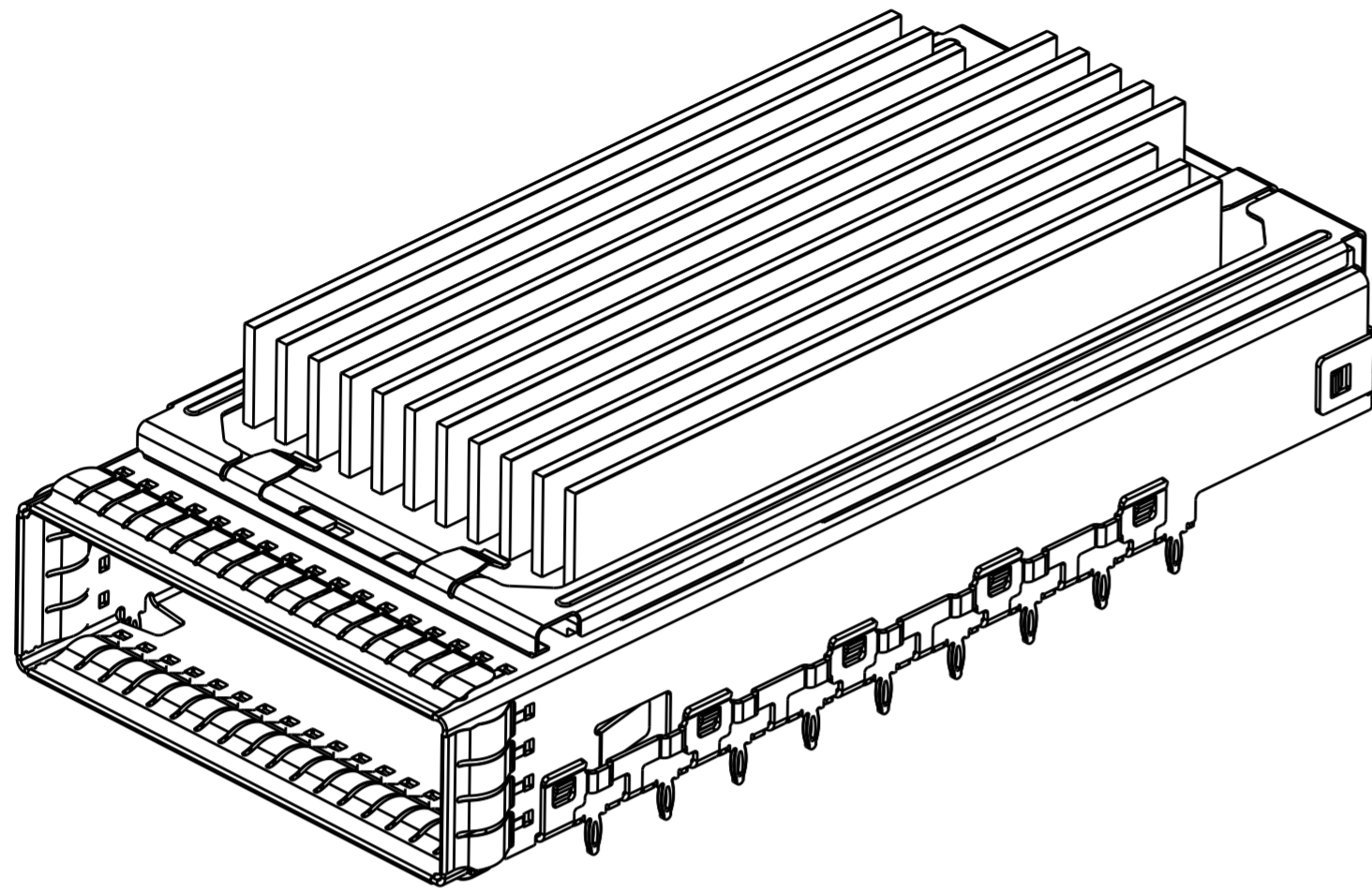


2293277-1 AS SHOWN

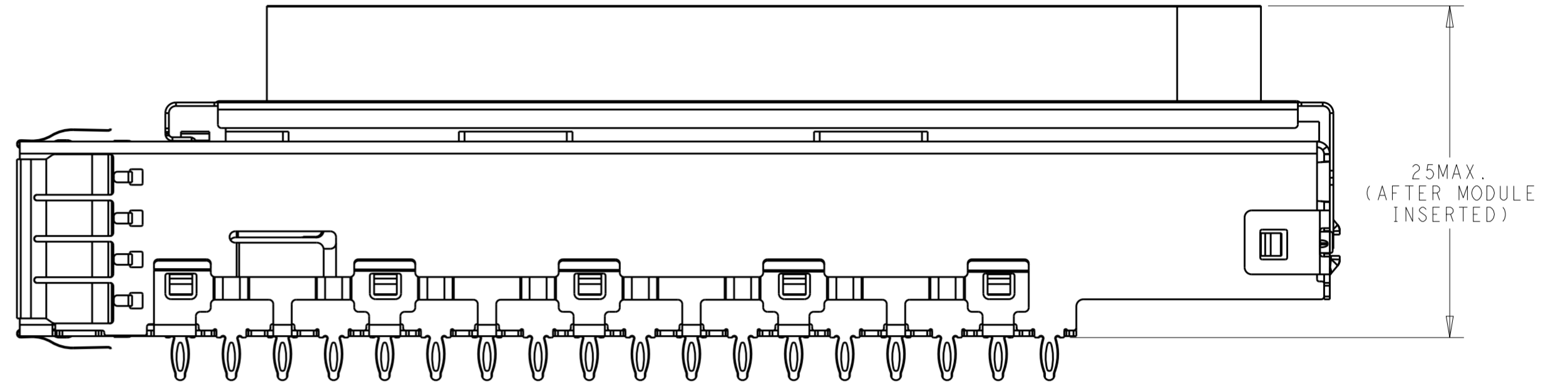
THIS DRAWING IS A CONTROLLED DOCUMENT.		DWN ANDY.XIE 17JUN2015	TE Connectivity	
DIMENSIONS: mm		CHK -		
TOLERANCES UNLESS OTHERWISE SPECIFIED:		APVD SEAN.HAN 17JUN2015	NAME HARD WARE KIT FOR CFP2 1X1 PRESS FIT	
0 PLC ±-		PRODUCT SPEC -	SIZE A2	
1 PLC ±0.25		APPLICATION SPEC -	CAGE CODE -	
2 PLC ±0.13		WEIGHT -	DRAWING NO. G-2274842	
3 PLC ±0.1		RESTRICTED TO -	SCALE 1:1	
4 PLC ±0.05		Customer Drawing	SHEET 2 OF 7	
ANGLES ±1			REV 8	
FINISH SEE NOTES				

THIS DRAWING IS UNPUBLISHED. RELEASED FOR PUBLICATION 20  
 © COPYRIGHT 20 BY - ALL RIGHTS RESERVED.

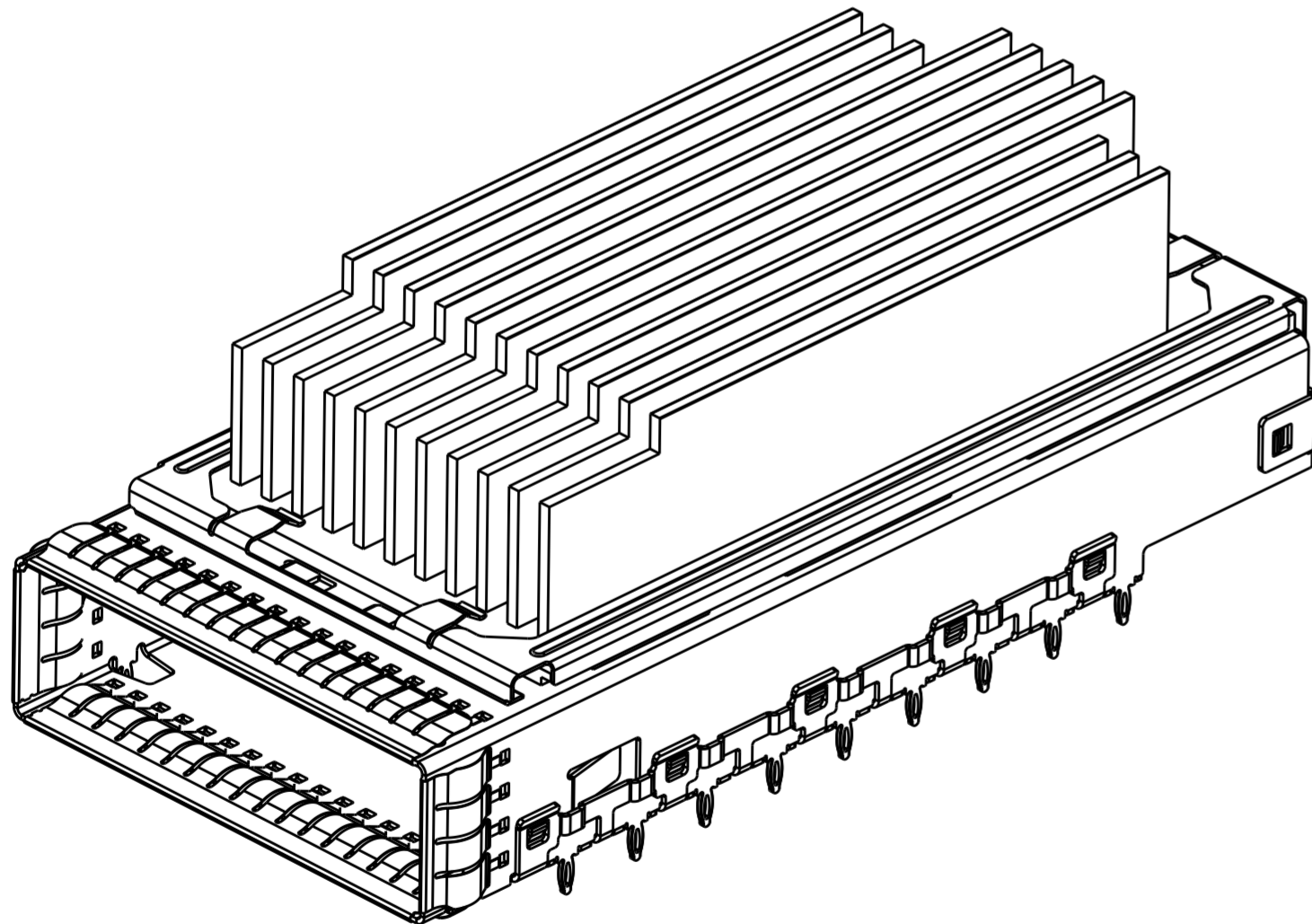
REVISIONS				
P	LTR	DESCRIPTION	DATE	APVD
-		SEE SHEET 1	-	-



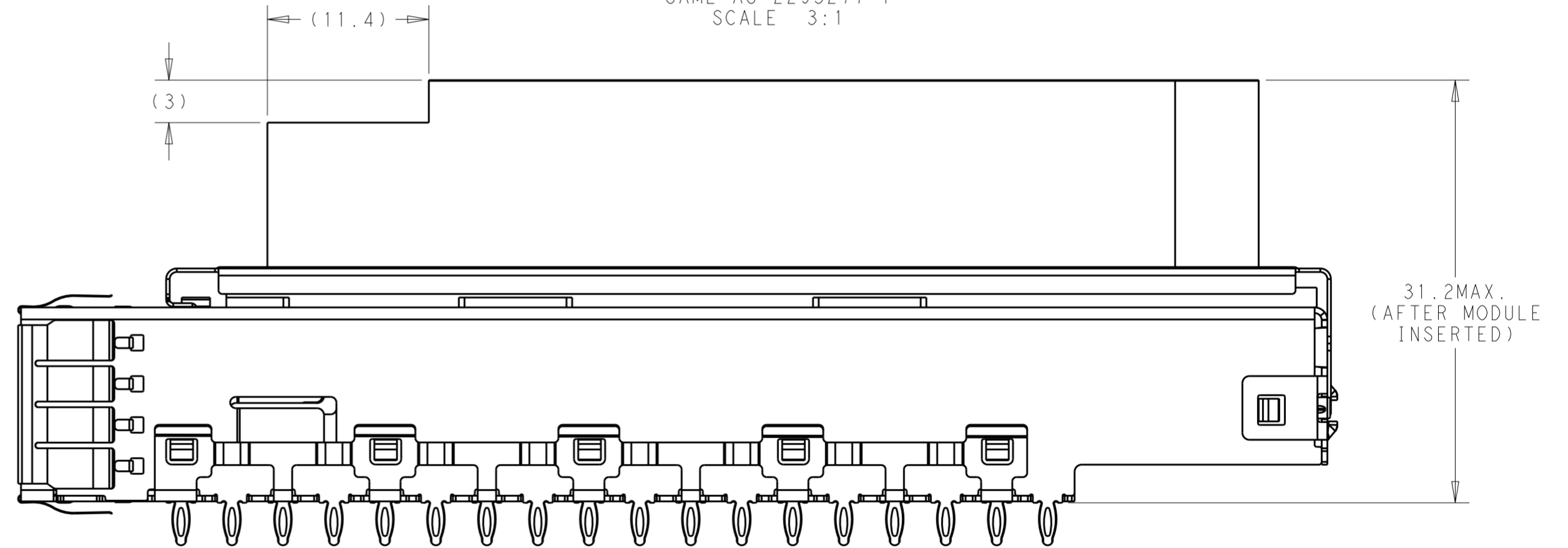
2293277-2



2293277-2  
 OTHER DIMENSIONS  
 SAME AS 2293277-1  
 SCALE 3:1



2293277-6



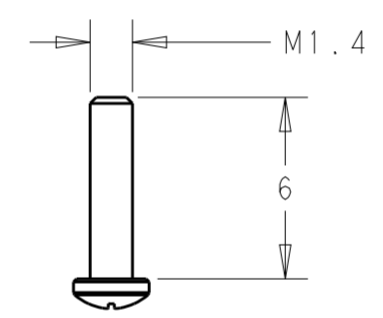
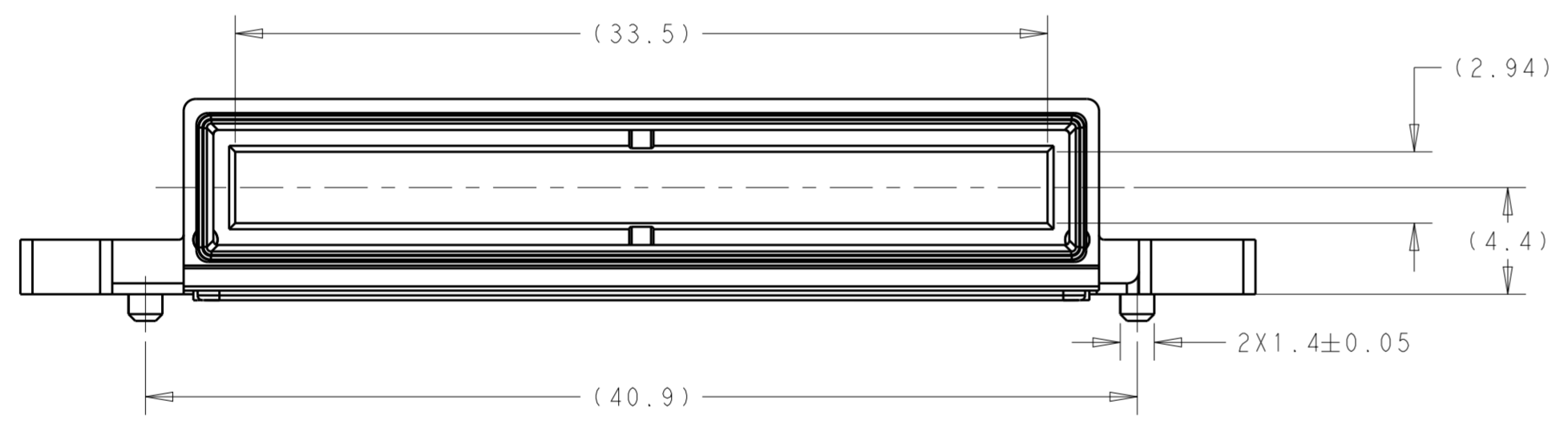
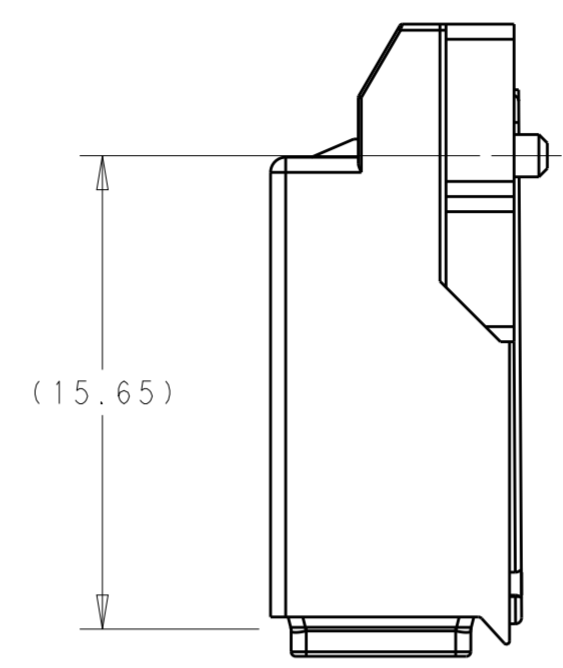
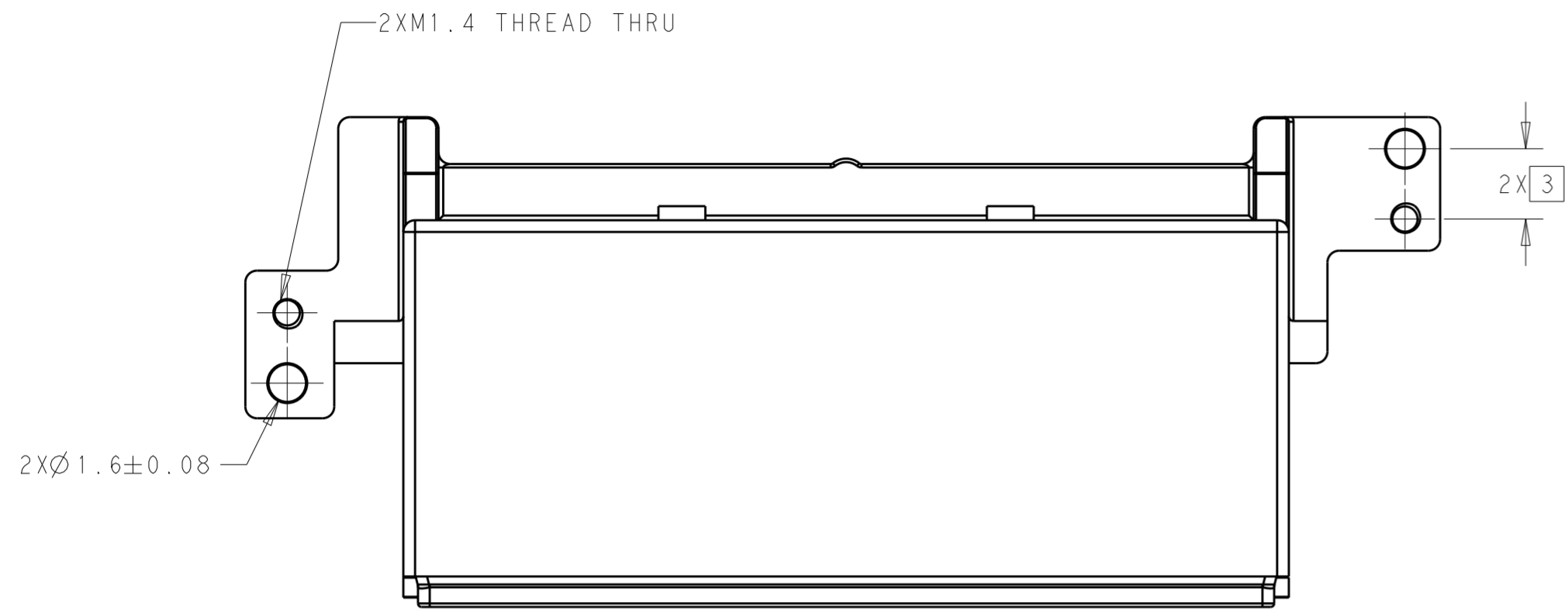
2293277-6 AS SHOWN, UNSPECIFIED  
 DIMENSION SAME AS 2293277-1

THIS PRINT IS  
**PRELIMINARY**  
 UNQUALIFIED PRODUCT  
 CONTACT PRODUCT ENGINEERING  
 BEFORE USING THIS PRINT

THIS DRAWING IS A CONTROLLED DOCUMENT.		DWN ANDY.XIE 17JUN2015	TE Connectivity	
DIMENSIONS: mm		CHK -		
TOLERANCES UNLESS OTHERWISE SPECIFIED:		APVD SEAN.HAN 17JUN2015	NAME HARD WARE KIT FOR CFP2 1X1 PRESS FIT	
0 PLC ±		PRODUCT SPEC	SIZE A2	
1 PLC ±0.25		APPLICATION SPEC	CAGE CODE -	
2 PLC ±0.13		WEIGHT	DRAWING NO G-2274842	
3 PLC ±0.1		Customer Drawing	RESTRICTED TO -	
4 PLC ±0.05			SCALE 3:1 SHEET 3 OF 7 REV 8	
ANGLES ±1				
FINISH				
MATERIAL SEE NOTES				

THIS DRAWING IS UNPUBLISHED. RELEASED FOR PUBLICATION 20  
 © COPYRIGHT 20 BY - ALL RIGHTS RESERVED.

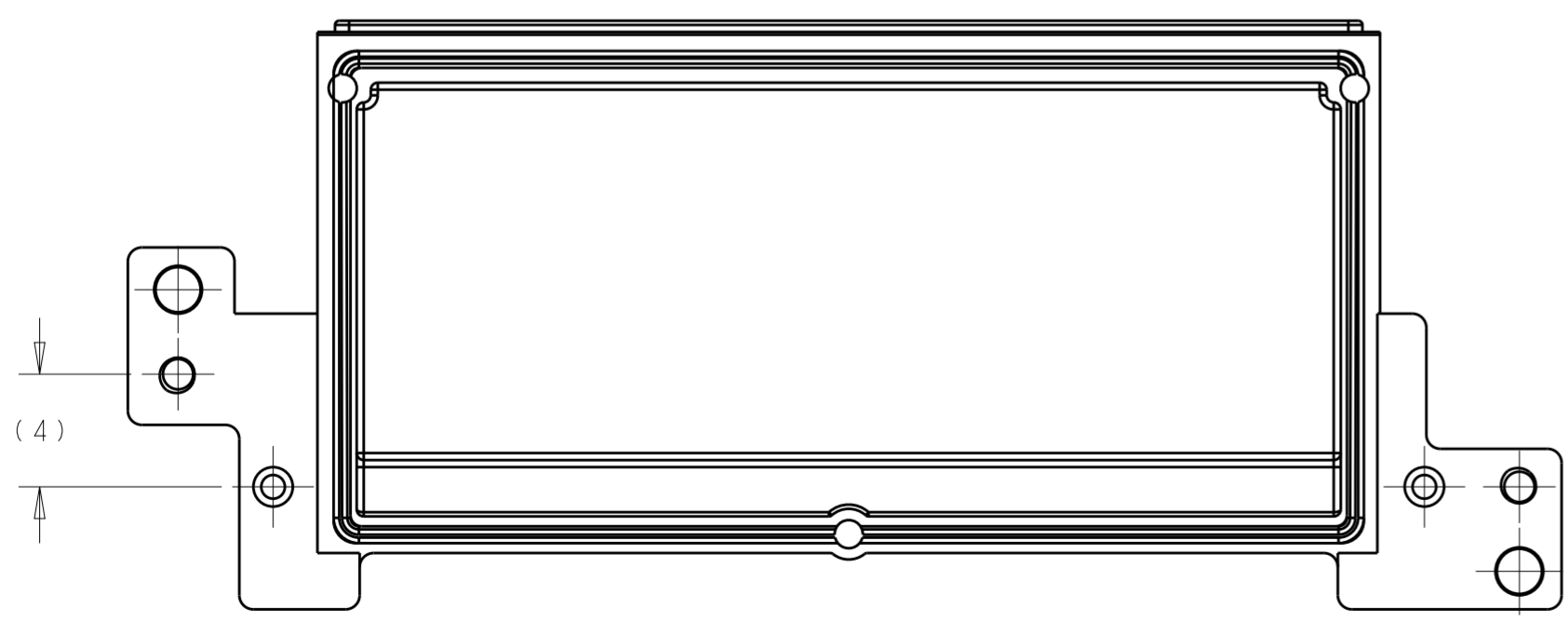
REVISIONS				
P	LTR	DESCRIPTION	DATE	APVD
-	-	SEE SHEET 1	-	-



M1.4 PHILIPS HEAD

SCALE 4:1

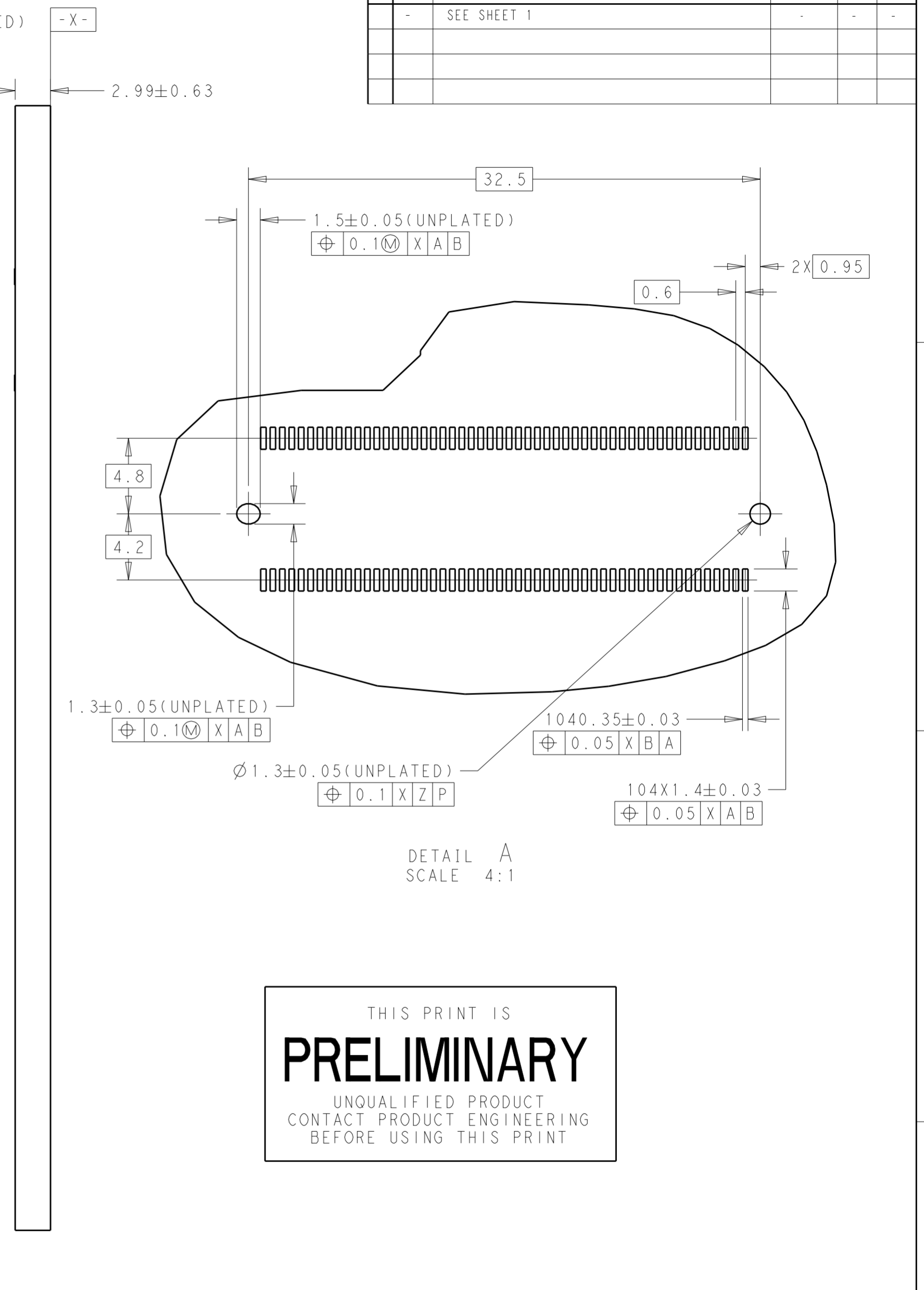
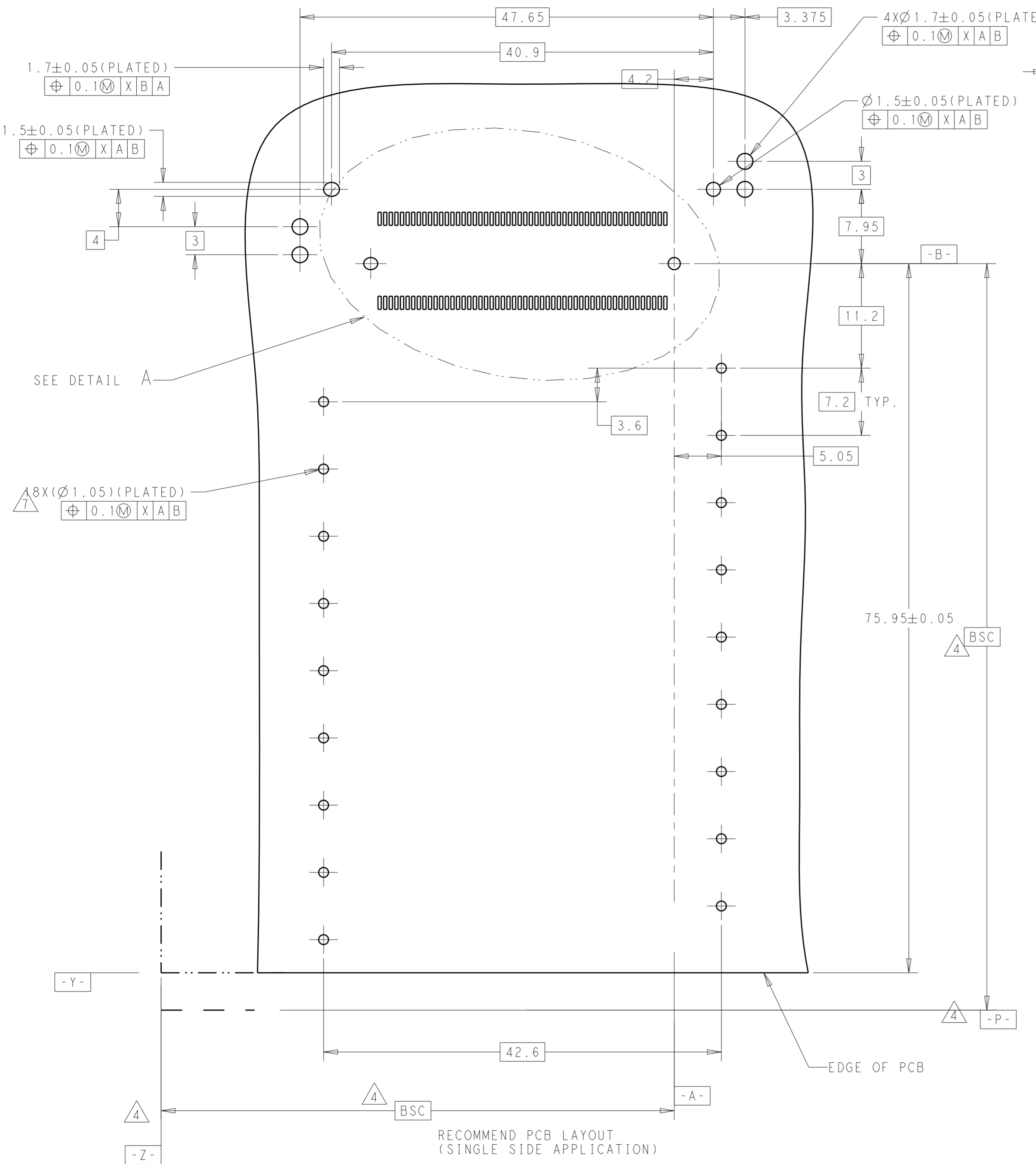
THIS PRINT IS  
**PRELIMINARY**  
 UNQUALIFIED PRODUCT  
 CONTACT PRODUCT ENGINEERING  
 BEFORE USING THIS PRINT



THIS DRAWING IS A CONTROLLED DOCUMENT.		DWN ANDY.XIE 17JUN2015	TE Connectivity	
DIMENSIONS: mm		CHK -		
TOLERANCES UNLESS OTHERWISE SPECIFIED:		APVD SEAN.HAN 17JUN2015	NAME HARD WARE KIT FOR CFP2 1X1 PRESS FIT	
0 PLC ±		PRODUCT SPEC -	SIZE A2	
1 PLC ±0.25		APPLICATION SPEC -	CAGE CODE -	
2 PLC ±0.13		WEIGHT -	DRAWING NO C-2274842	
3 PLC ±0.1		Customer Drawing	RESTRICTED TO -	
4 PLC ±0.05		SCALE 4:1	SHEET 4 OF 7	
ANGLES ±1			REV 8	
FINISH				
MATERIAL SEE NOTES				

THIS DRAWING IS UNPUBLISHED. RELEASED FOR PUBLICATION 20  
 © COPYRIGHT 20 BY - ALL RIGHTS RESERVED.

REVISIONS					
P	LTR	DESCRIPTION	DATE	DWN	APVD
-	-	SEE SHEET 1	-	-	-



DETAIL A  
SCALE 4:1

THIS PRINT IS  
**PRELIMINARY**  
UNQUALIFIED PRODUCT  
CONTACT PRODUCT ENGINEERING  
BEFORE USING THIS PRINT

THIS DRAWING IS A CONTROLLED DOCUMENT.		DWN ANDY.XIE 17JUN2015	TE Connectivity		
DIMENSIONS: mm		CHK -			
TOLERANCES UNLESS OTHERWISE SPECIFIED:		APVD SEAN.HAN 17JUN2015	NAME HARD WARE KIT FOR CFP2 1X1 PRESS FIT		
0 PLC ±		PRODUCT SPEC	SIZE A2		
1 PLC ±0.25		APPLICATION SPEC	CAGE CODE -		
2 PLC ±0.13		WEIGHT	DRAWING NO C-2274842		
3 PLC ±0.1		Customer Drawing	RESTRICTED TO -		
4 PLC ±0.05		SCALE 3:1	SHEET 5 OF 7		
ANGLES ±1		REV 8	REV 8		
FINISH		SEE NOTES			

RECOMMEND PCB LAYOUT  
(SINGLE SIDE APPLICATION)

EDGE OF PCB

THIS DRAWING IS UNPUBLISHED. RELEASED FOR PUBLICATION 20  
 © COPYRIGHT 20 BY - ALL RIGHTS RESERVED.

REVISIONS				
P	LTR	DESCRIPTION	DATE	APVD
-		SEE SHEET 1	-	-

CROSS-HATCHED DENOTES COMPONENT AND TRACE KEEP-OUT AREA (EXCEPT CHASSIS GROUND) FOR NON-MAYLARTAPE APPLICATION. COMPONENTS AND TRACES ARE ONLY ALLOWED FOR APPLICATION WITH MYLAR TAPE

- Z -

74.63 MAX.

10.63 MIN

8.5

2.2

EXPOSED PLATED AND SOLDER MASK PULLED BACK (COMPONENT AND TRACE KEEPOUT AREA)

2.8 MIN

46.06

42.6 MIN

39.2

37.9

36.74

42.1

- A -

1.7 MIN

2.8 MIN

4.16

3.1

1.2

5.16

1.05

2.35

4.5

1.8

1.78

6.85

14.35


16

EDGE OF PCB

CROSS-HATCHED DENOTES COMPONENT AND TRACE KEEP-OUT AREA (EXCEPT CHASSIS GROUND)

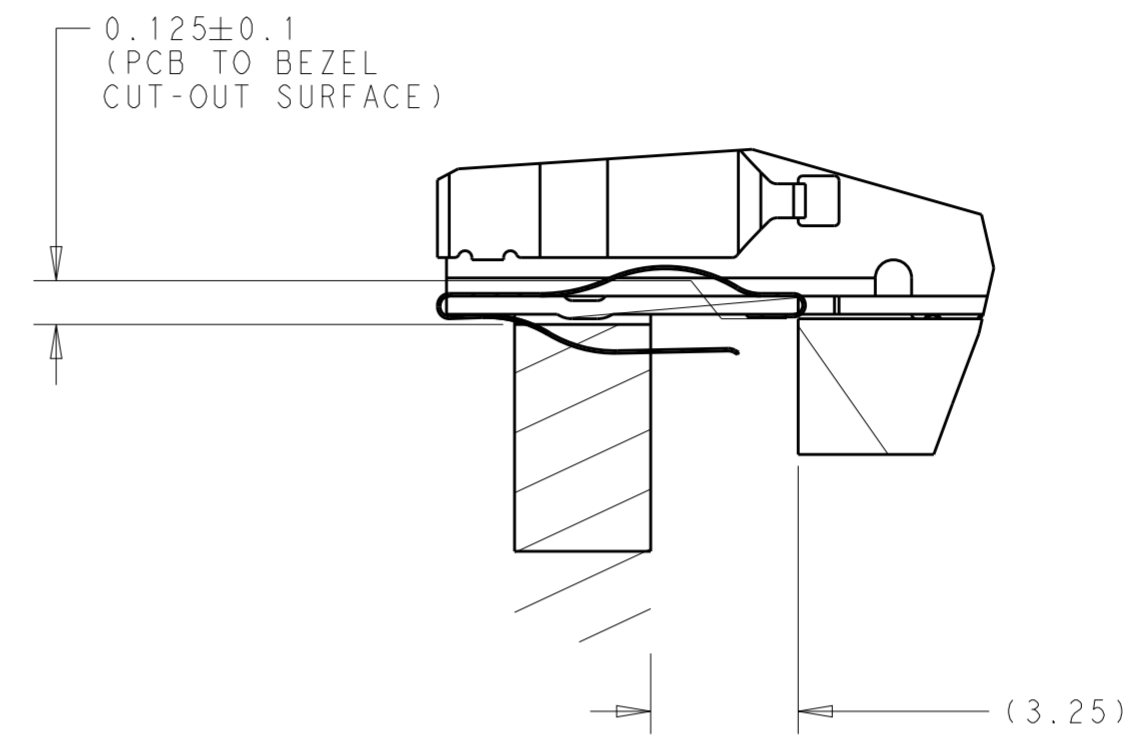
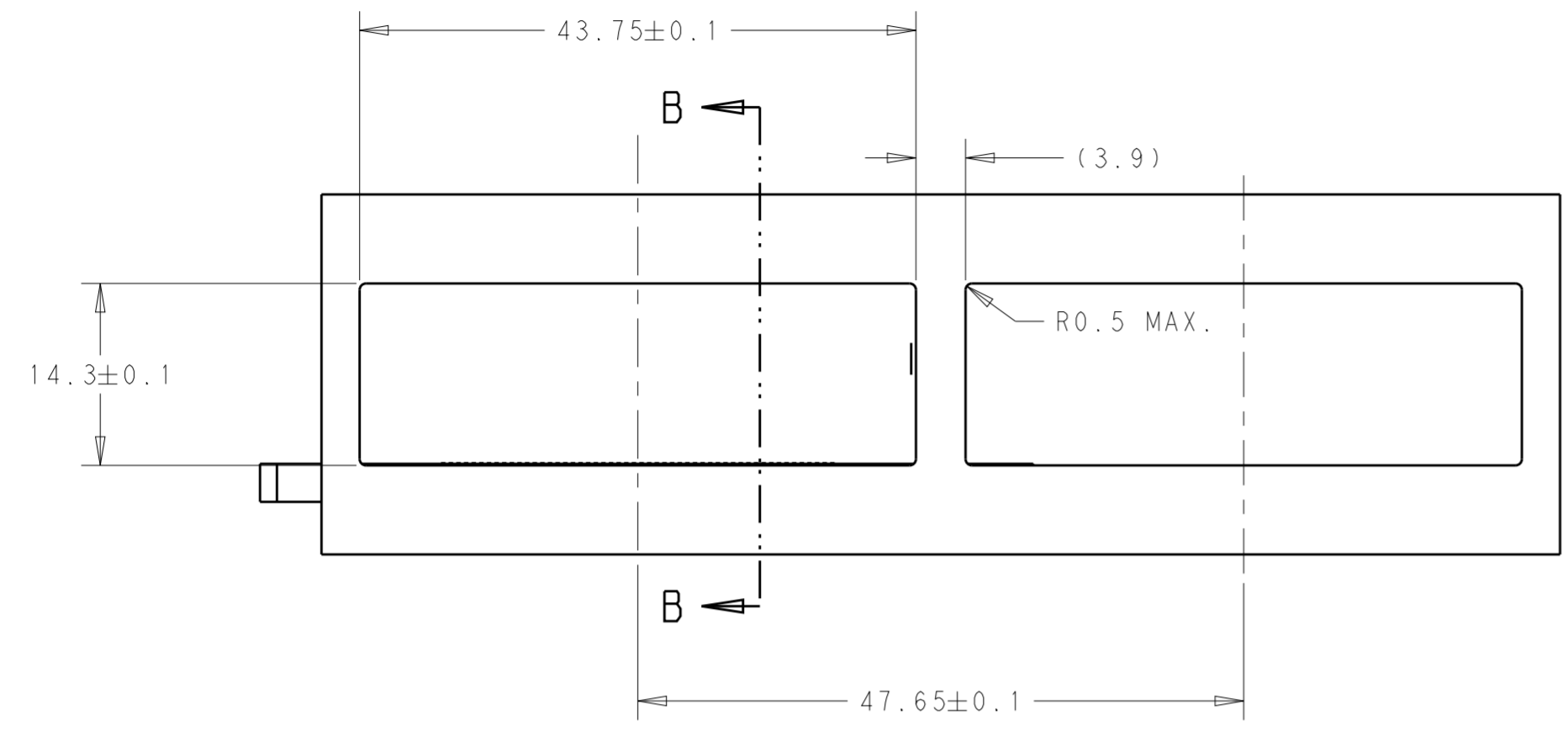
COMPONENT KEEP-OUT AREA (TRACE ALLOWED)

THIS PRINT IS  
**PRELIMINARY**  
 UNQUALIFIED PRODUCT  
 CONTACT PRODUCT ENGINEERING  
 BEFORE USING THIS PRINT

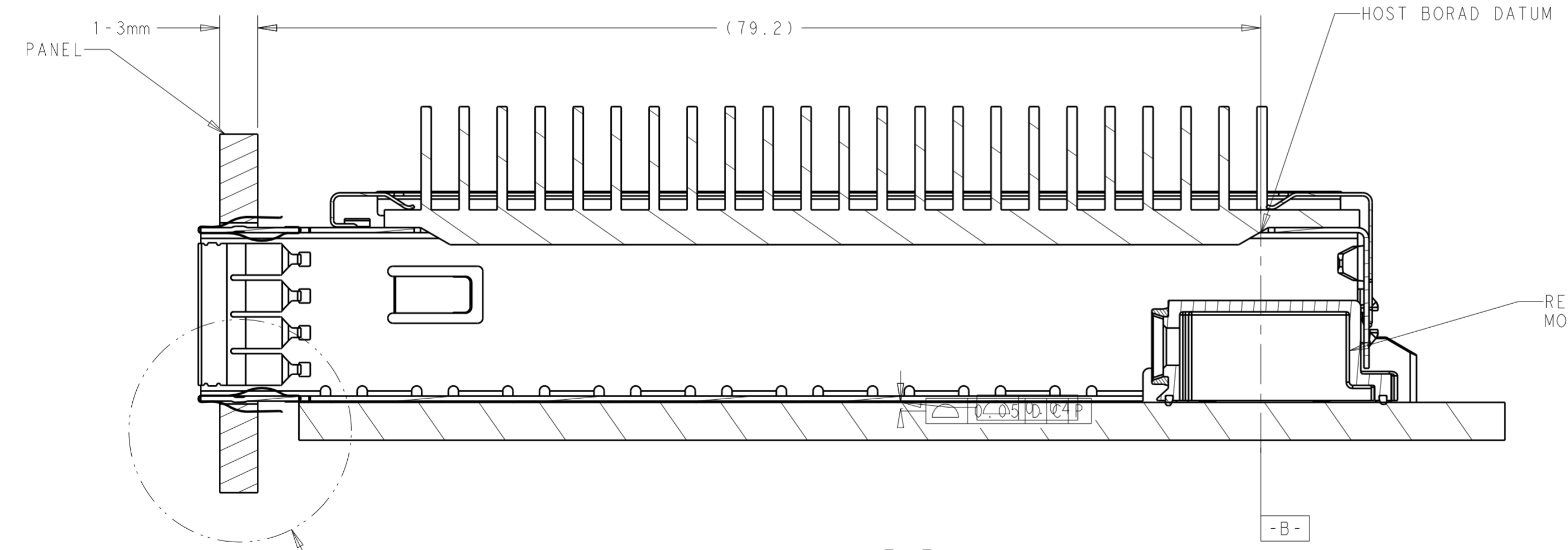
THIS DRAWING IS A CONTROLLED DOCUMENT.		DWN ANDY.XIE 17JUN2015	 TE Connectivity	
DIMENSIONS: mm		CHK -		
TOLERANCES UNLESS OTHERWISE SPECIFIED:		APVD SEAN.HAN 17JUN2015	NAME HARD WARE KIT FOR CFP2 1X1 PRESS FIT	
0 PLC ±0.10		PRODUCT SPEC -	SIZE A2	
1 PLC ±0.10		APPLICATION SPEC -	CAGE CODE -	
2 PLC ±0.10		WEIGHT -	DRAWING NO G-2274842	
3 PLC ±0.10		Customer Drawing	RESTRICTED TO -	
4 PLC ±0.05			SCALE 1:1	
ANGLES ±1			SHEET 6 OF 7	
FINISH -			REV 8	

THIS DRAWING IS UNPUBLISHED. RELEASED FOR PUBLICATION 20  
 © COPYRIGHT 20 BY - ALL RIGHTS RESERVED.

REVISIONS				
P	LTR	DESCRIPTION	DATE	APVD
-	-	SEE SHEET 1	-	-



DETAIL B  
SCALE 6:1



SECTION B-B  
SCALE 3:1

THIS PRINT IS  
**PRELIMINARY**  
 UNQUALIFIED PRODUCT  
 CONTACT PRODUCT ENGINEERING  
 BEFORE USING THIS PRINT

SEE DETAIL B

THIS DRAWING IS A CONTROLLED DOCUMENT.		DWN ANDY.XIE 17JUN2015	TE Connectivity			
DIMENSIONS: mm		CHK - APVD SEAN.HAN 17JUN2015				
TOLERANCES UNLESS OTHERWISE SPECIFIED:		NAME HARD WARE KIT FOR CFP2 1X1 PRESS FIT	SIZE A2	CAGE CODE -	DRAWING NO. C-2274842	RESTRICTED TO -
0 PLC ± 1 PLC ±0.25 2 PLC ±0.13 3 PLC ±0.1 4 PLC ±0.05 ANGLES ±1 FINISH		PRODUCT SPEC -	WEIGHT -	SCALE 5:1	SHEET 7 OF 7	REV 8
MATERIAL SEE NOTES		APPLICATION SPEC -	Customer Drawing			