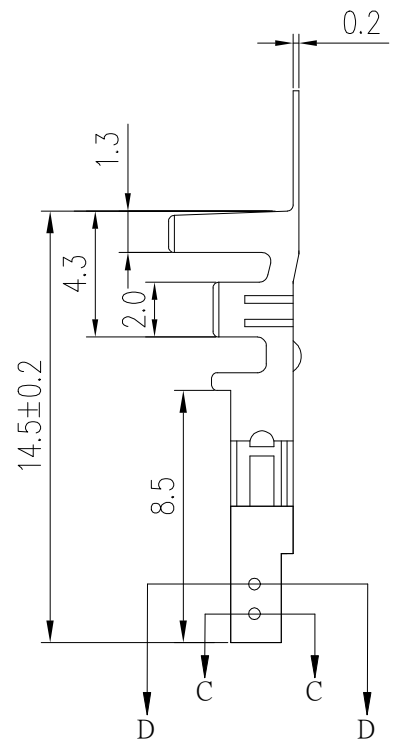
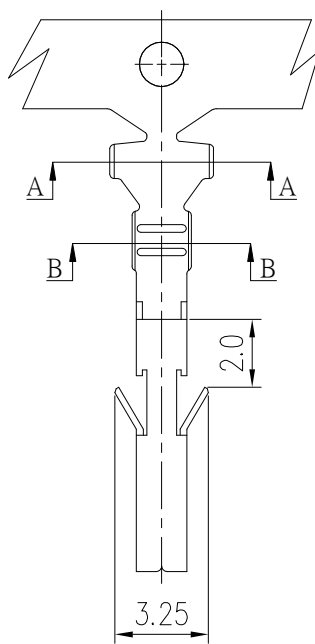


PRODUCT NUMBER
SEE PART NO. TABLE



- NOTES:
 1. MATERIAL: OPTIONAL.
 2. THIS TERMINAL IS USED WITH FCI RECEPTACLE HSG 10127815.
 3. PRODUCT SPECIFICATION: GS-12-1181.
 4. PACKAGE SPECIFICATION: GS-14-2362.
 5. PART NUMBER SCHEME:
 10127817- X X X X LF

PLATING TYPE:
 P: PRE-PLATED
 BLANK: POST-PLATED

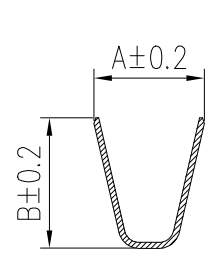
APPLICABLE AWG:
 1: AWG #16~#22
 2: AWG #24~#28

PLATING CODE:
 1: GOLD FLASH
 2: TIN
 4: 30u" GOLD PLATING

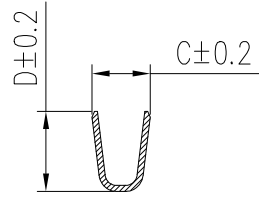
MATERIAL CODE:
 1: PHOSPHORUS BRONZE
 2: BRASS

6. DIMENSIONAL & PART NO. TABLE:

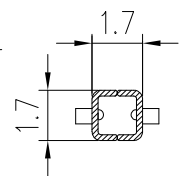
PART NO.	A	B	C	D	APPLICABLE WIRES
10127817-XX2XLF	3.2	3.4	1.8	2.2	#24~#28
10127817-XX1XLF	3.7	4.5	1.8	2.7	#16~#22



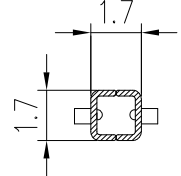
SEC A-A



SEC B-B



SEC C-C



SEC D-D

mat'l. code		surface ISO 1302 ✓		tolerance ISO 406 ISO 1101		projection		product family	
ltr		ecn no		dr		date		WTB	
A		TAI		2013-11-11		tolerances unless otherwise specified		title	
B		ELX-T-17193		TAI		2014-03-12		RECEPTACLE TERMINAL FOR	
C		ELX-T-18006		TAI		2014-06-19		MINITEK PWR4.2 WIRE CONNECTOR	
D		ELX-N-29382		TONY		2018-02-22		dwg no	
				dr		KENNY TAI		sheet 1 of 1	
				engr		KENNY TAI		size	
				chr		KENNY TAI		10127817	
				appd		PM ZHENG		A3	
								type Product Customer Drawing	
sheet index		revision sheet		D		1			

© 2016 AFCI
 Amphenol FCI