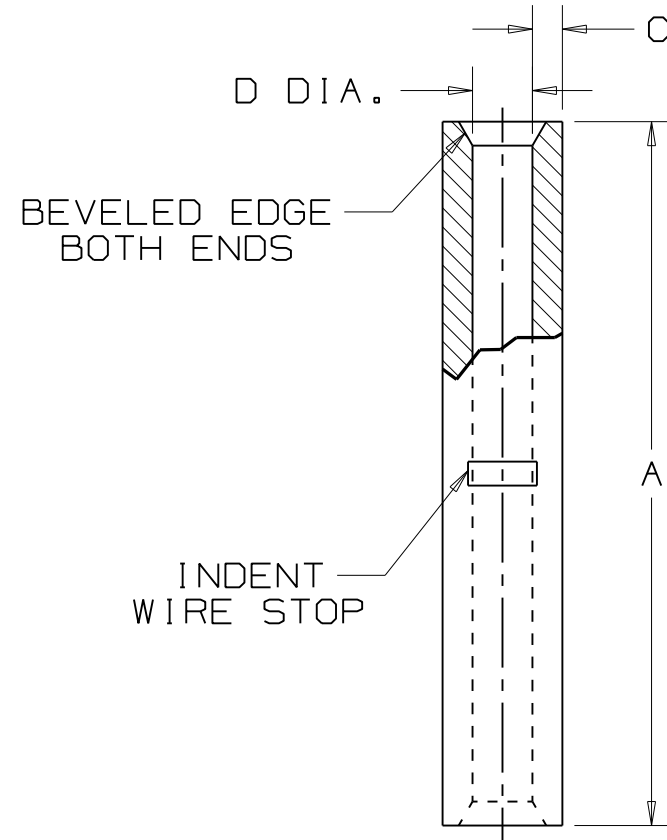
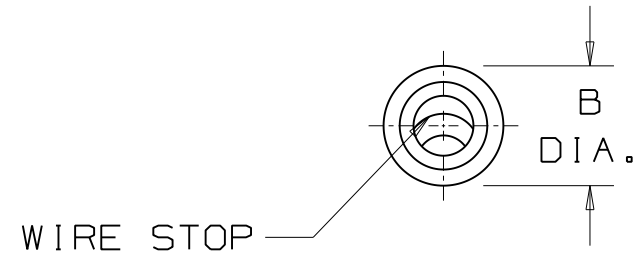


PANDUIT PART NUMBER	WIRE SIZE	DIMENSIONS in.			
		A $\pm .03$	B DIA. $\pm .01$	C $\pm .003$	D DIA. $\pm .01$
BS22	26-22	.47 (11.9)	.08 (2.0)	.02 (0.5)	.04 (1.0)

NOTES:

- UL LISTED AND CSA CERTIFIED FOR:
  - #26-22 AWG SOLID OR STRANDED COPPER WIRE
  - 302° F (150° C) MAX. TEMP. RATING
- MATERIAL:
  - .02 (0.5) THK COPPER, TIN PLATED
- See [www.panduit.com](http://www.panduit.com) FOR PART NUMBER SUFFIX DESIGNATION FOR PACKAGE SIZE
- DIMENSIONS IN BRACKETS ARE IN MILLIMETERS
- INSTALLATION TOOLS:  
CT-100 POCKET B
- WIRE STRIP LENGTH:  $9/32^{+1/32}_{-0}$  (7.1  $^{+.8}_{-0}$ )



04	4/11	SB		ADDED PACKAGING NOTE #3				 TINLEY PARK, ILLINOIS  #26-22 BARREL NON-INSULATED BUTT SPLICE
03	1/01	RM		FILESPEC WAS N41336_PCD_02				
02	12/94	TH		UPDATED NOTES AND DIMENSIONS	02709			
1	9-88	DW		REDRAWN WITH REVISIONS				
REV	DATE	BY	CHK	DESCRIPTION	ECN #	CUST	PM	DRAWN BY: DAW CHK'D: SCALE: NONE DRAWING NO.: A41336