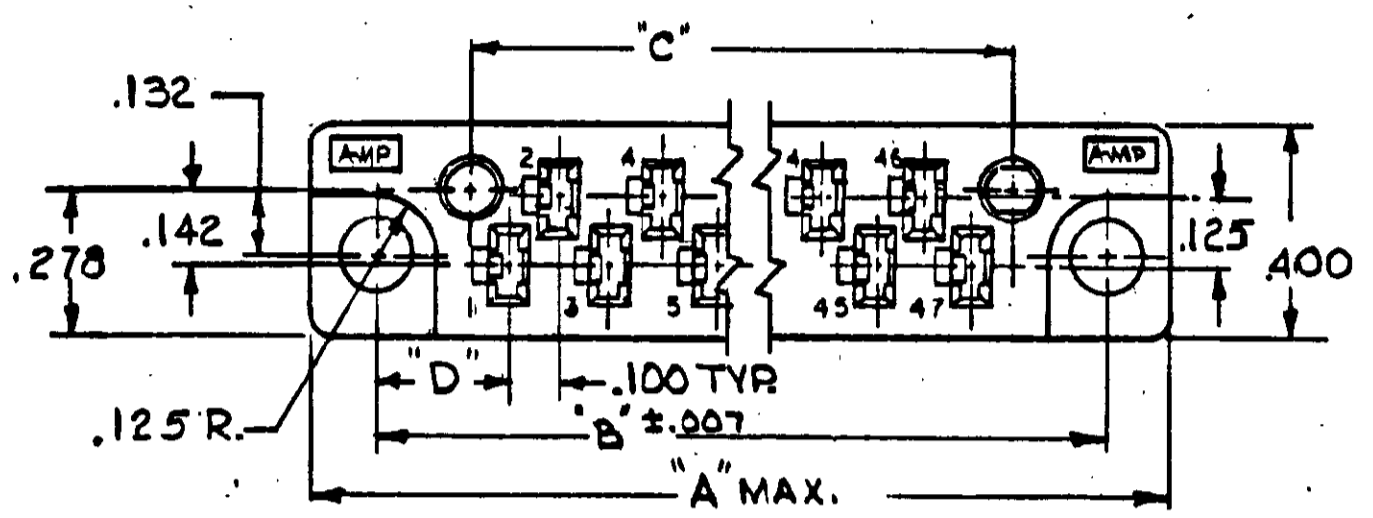
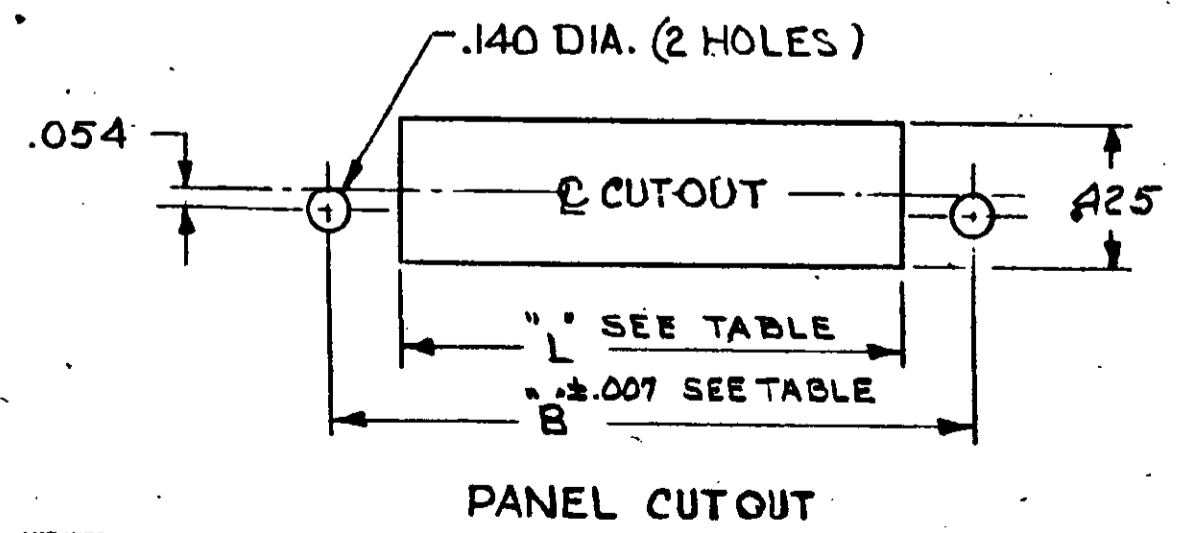
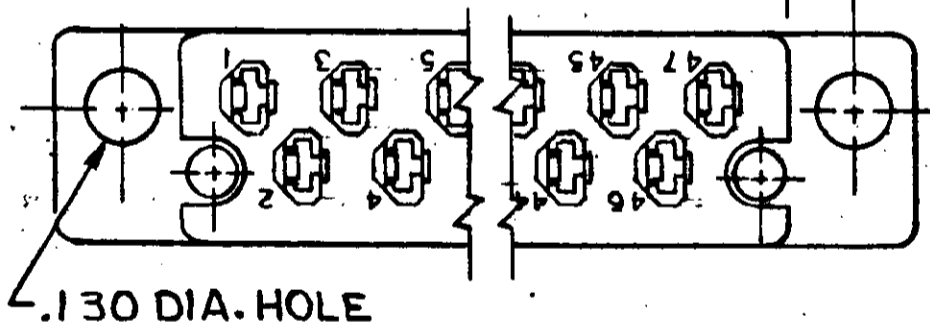
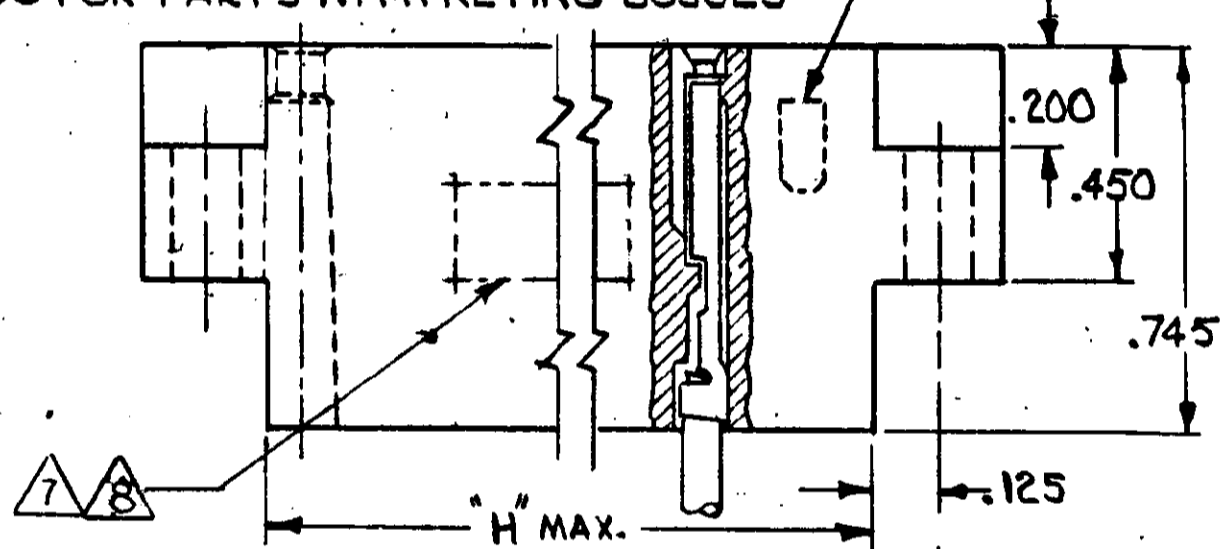


REVISIONS				
ZONE	LTR	DESCRIPTION	DATE	APPROVED
	AJ1	REVISED PER ECO-11-005294	12APR11	HMR



SEE 582200 FOR PARTS WITH KEYING BOSSES



NO CAVITIES	"A" MAX.	"B"	"C"	"L"	"H" MAX.	"D"
17	2.390	2.130	1.764	1.910	1.897	.265
23	2.990	2.730	2.364	2.510	2.497	
29	3.590	3.330	2.964	3.110	3.097	
35	4.190	3.930	3.564	3.710	3.697	
41	4.790	4.530	4.164	4.310	4.297	
47	5.623	5.363	4.764	5.143	5.130	

NOTE:
 1- THE CAVITY CENTERLINES ARE MEASURED FROM THE CENTERLINE OF THE ALIGNMENT PIN HOLES AND AS LONG AS THE CAVITIES FALL WITHIN THE TOLERANCES INDICATED THE ALLOWABLE WARPAGE IS INDEPENDENT OF THE CAVITIES AND BECOMES A MEASUREMENT OF THE OUT SIDE SURFACE OF THE BLOCK. IT DOES NOT AFFECT THE MATING OF THIS BLOCK WITH 582152.

2- THESE BLOCKS MATE WITH PART 582152
 3- FOR SUPPLEMENTAL SPECIFICATIONS SEE E.S. 8-1-3

- ⚠ (WHERE SPECIFIED) AMP PART NO. NOT STAMPED ON PART. DATE CODE WILL BE STAMPED ON PART.
- ⚠ CUSTOMER PART NO. TO BE STAMPED IN ADDITION TO AMP PART NO.
- ⚠ OBS PART NO.
- ⚠ AMP PART NUMBER AND DATE CODE MARKED APPROX THIS AREA EITHER SIDE.

HOUSING
 MATERIAL: DIALLYL PHTHALATE
 GLASS FILLED
 PER: MIL-M-14F, TYPE S.D.G-F.
 COLOR: GREEN (EXCEPT AS NOTED)

⚠ AMP PART NUMBER, DATE CODE AND MILITARY NUMBER MARKED APPROX THIS AREA.

UNLESS OTHERWISE SPECIFIED DIMENSIONS ARE IN INCHES TOLERANCES ON		CONTRACT NO.		TE Connectivity	
FRACTIONS	DECIMALS	ANGLES	DATE	DATE	NAME
± .005	± .005	± 1°	7-17-67	7-20-67	AMP BLADE RECEPTACLE HOUSING
MATERIAL			DATE	DATE	DATE
SEE CALL-OUT			7-20-67	7-20-67	7-20-67
HEAT TREAT			DATE	DATE	DATE
			7-20-67	7-20-67	7-20-67
FINISH			DATE	DATE	DATE
			7-20-67	7-20-67	7-20-67
SIZE		CODE IDENT NO.	NUMBER		
C		00779	582151		
SCALE	WT	CALC	ACTUAL	SHEET 1 OF 2 SHTS.	
3-1					

CUSTOMER DRAWING

REVISE		REVISIONS		DATE	APPROVED
DATE	BY	DESCRIPTION			
J		SEE SHEET 1			

PART NO.	NO. CAVITIES	MARKING
3-582151-1	17	△
3-582151-2	23	△
3-582151-3	29	△
3-582151-4	35	△
3-582151-5	41	△
3-582307-1	47	△
2-582151-4	35	GRAY HOUSING, △
4-582151-5	17	STAMP CUST. PART NO. △ △
4-582151-6	23	STAMP CUST. PART NO. △ △
4-582151-7	29	STAMP CUST. PART NO. △
4-582151-8	35	STAMP CUST. PART NO. △ △
4-582151-9	41	STAMP CUST. PART NO. △ △
1-582307-3	47	STAMP CUST. PART NO. △
5-582151-1	17	M21097/13-01 △
5-582151-2	23	M21097/13-02 △
5-582151-3	29	M21097/13-03 △
5-582151-4	35	M21097/13-04 △
5-582151-5	41	M21097/13-05 △
5-582307-1	47	M21097/13-06 △
4-582151-2	23	STAMP CUST. PART NO. △ △
4-582151-3	29	STAMP CUST. PART NO. △ △

UNLESS OTHERWISE SPECIFIED DIMENSIONS ARE IN INCHES TOLERANCES ON		CONTRACT NO.		DATE		NAME			
FRACTIONS	DECIMALS	ANGLES		DATE	DATE	DATE	DATE		
± .01	± .005	± .01		7-17-67	7-20-67	7-20-67	7-20-67		
MATERIAL	HEAT TREAT		DESIGN BY		DATE		AMP BLADE RECEPTACLE HOUSING		
	H		R. Shawman		7-20-67				
FINISH	OTHER APPD		SCALE		BY		CALC. ACTUAL		
			C		00779		582151		
LOC. OF ACQ. NO.		SCALE		BY		CALC. ACTUAL		SHEET 2 OF 2 SHTS.	

NUMBER
CUST-582151

CUSTOMER DRAWING