

ENTER DESCRIPTION EC NO: DG2011-0440 DRW: FZHANG01 CHKD: JLU13 APPR: ZXDENG	2011/05/04 2011/05/04 2011/05/11	QUALITY SYMBOLS ▽=0 ▽=0	GENERAL TOLERANCES (UNLESS SPECIFIED)		DIMENSION STYLE MM ONLY		SCALE ---	DESIGN UNITS METRIC	THIRD ANGLE PROJECTION		
				mm	INCH	DRAWN BY FZHANG01	DATE 2011/04/29	TITLE HDMI (M) TO HDMI (M) CABLE ASSY			
			4 PLACES	± ---	± ---	CHECKED BY JFZHENG	DATE 2011/04/29				
			3 PLACES	± ---	± ---	APPROVED BY ZXDENG	DATE 2011/05/11	MOLEX INCORPORATED DOCUMENT NO. SD-68767-0019			
2 PLACES	± 0.25	± ---	MATERIAL NO. 687670019		SHEET NO. 1 OF 2						
1 PLACE	± 0.5	± ---	SIZE A 4						THIS DRAWING CONTAINS INFORMATION THAT IS PROPRIETARY TO MOLEX INCORPORATED AND SHOULD NOT BE USED WITHOUT WRITTEN PERMISSION		
DRAFT WHERE APPLICABLE MUST REMAIN WITHIN DIMENSIONS											

7

6

5

4

3

2

1

WIRE DIAGRAM:

SHIELD	SHIELD	OVERALL SHIELD	GROUND
PIN 19	PIN 19	PINK	HOT PLUG DETECT
PIN 18	PIN 18	ORANGE	+5V POWER
PIN 17	PIN 17	YELLOW	DDC/CEC GROUND
PIN 16	PIN 16	WHITE	SDA
PIN 15	PIN 15	RED	SCL
PIN 14	PIN 14	VIOLET	RESERVED
PIN 13	PIN 13	GRAY	CEC
PIN 12	PIN 12	WHITE	TMDS CLOCK-
PIN 11	PIN 11	BRAID	TMDS CLOCK SHIELD
PIN 10	PIN 10	BLACK	TMDS CLOCK+
PIN 9	PIN 9	WHITE	TMDS DATA 0-
PIN 8	PIN 8	BRAID	TMDS DATA 0 SHIELD
PIN 7	PIN 7	BLUE	TMDS DATA 0+
PIN 6	PIN 6	WHITE	TMDS DATA 1-
PIN 5	PIN 5	BRAID	TMDS DATA 1 SHIELD
PIN 4	PIN 4	GREEN	TMDS DATA 1+
PIN 3	PIN 3	WHITE	TMDS DATA 2-
PIN 2	PIN 2	BRAID	TMDS DATA 2 SHIELD
PIN 1	PIN 1	RED	TMDS DATA 2+
HDMI	HDMI	COLOR	CABLE FUNCTION

NOTE:

- OVEMROLD SPECIFICATION:
 - HDMI INNERMOLD WITH BK PVC
 - HDMI OVERMOLD WITH PVC
 - HDMI DUST COVER WITH PE
- PRODUCT ELECTRICAL SPECIFICATION:
REFER TO HDMI SPECIFICATION FOR DETAILS.
- THIS PRODUCT MUST MEET ROHS COMPLIANCE.

E	PRE-CUT C.Foil 47X23mm T=25U		2																																																
D	COPPER FOIL		2																																																
C	HDMI 19P MALE,30U"Au Solder Type		2																																																
B	Metal Shell For HDMI 19P Male,Gold flash		2																																																
A	(4P+1P)X28+5CX28,ALSH,PVC,BK,7.3,UL20276	2000 ref.	1																																																
ITEM	DESCRIPTION	LENGTH	QTY.																																																
<table border="1"> <thead> <tr> <th colspan="2">DIMENSION STYLE</th> <th>SCALE</th> <th>DESIGN UNITS</th> <th colspan="2">THIRD ANGLE PROJECTION</th> </tr> <tr> <th colspan="2">MM ONLY</th> <th>---</th> <th>METRIC</th> <th colspan="2"> </th> </tr> </thead> <tbody> <tr> <td>DRAWN BY</td> <td>DATE</td> <td colspan="4">TITLE</td> </tr> <tr> <td>FZHANG01</td> <td>2011/04/29</td> <td colspan="4">HDMI (M) TO HDMI (M) CABLE ASSY</td> </tr> <tr> <td>CHECKED BY</td> <td>DATE</td> <td colspan="4"> MOLEX INCORPORATED </td> </tr> <tr> <td>JFZHENG</td> <td>2011/04/29</td> <td colspan="4"> MATERIAL NO. 687670019 DOCUMENT NO. SD-68767-0019 SHEET NO. 2 OF 2 </td> </tr> <tr> <td>APPROVED BY</td> <td>DATE</td> <td colspan="4"> DRAFT WHERE APPLICABLE MUST REMAIN WITHIN DIMENSIONS </td> </tr> <tr> <td>ZXDENG</td> <td>2011/05/11</td> <td colspan="4"> THIS DRAWING CONTAINS INFORMATION THAT IS PROPRIETARY TO MOLEX INCORPORATED AND SHOULD NOT BE USED WITHOUT WRITTEN PERMISSION </td> </tr> </tbody> </table>				DIMENSION STYLE		SCALE	DESIGN UNITS	THIRD ANGLE PROJECTION		MM ONLY		---	METRIC			DRAWN BY	DATE	TITLE				FZHANG01	2011/04/29	HDMI (M) TO HDMI (M) CABLE ASSY				CHECKED BY	DATE	MOLEX INCORPORATED				JFZHENG	2011/04/29	MATERIAL NO. 687670019 DOCUMENT NO. SD-68767-0019 SHEET NO. 2 OF 2				APPROVED BY	DATE	DRAFT WHERE APPLICABLE MUST REMAIN WITHIN DIMENSIONS				ZXDENG	2011/05/11	THIS DRAWING CONTAINS INFORMATION THAT IS PROPRIETARY TO MOLEX INCORPORATED AND SHOULD NOT BE USED WITHOUT WRITTEN PERMISSION			
DIMENSION STYLE		SCALE	DESIGN UNITS	THIRD ANGLE PROJECTION																																															
MM ONLY		---	METRIC																																																
DRAWN BY	DATE	TITLE																																																	
FZHANG01	2011/04/29	HDMI (M) TO HDMI (M) CABLE ASSY																																																	
CHECKED BY	DATE	MOLEX INCORPORATED																																																	
JFZHENG	2011/04/29	MATERIAL NO. 687670019 DOCUMENT NO. SD-68767-0019 SHEET NO. 2 OF 2																																																	
APPROVED BY	DATE	DRAFT WHERE APPLICABLE MUST REMAIN WITHIN DIMENSIONS																																																	
ZXDENG	2011/05/11	THIS DRAWING CONTAINS INFORMATION THAT IS PROPRIETARY TO MOLEX INCORPORATED AND SHOULD NOT BE USED WITHOUT WRITTEN PERMISSION																																																	

ENTER DESCRIPTION EC NO: DG2011-0440 DRWN:FZHANG01 2011/05/04 CHKD:JLJ113 2011/05/04 APPR:ZXDENG 2011/05/11	QUALITY SYMBOLS
	=0 =0
DESCRIPTION	REV
A	

GENERAL TOLERANCES (UNLESS SPECIFIED)	
	mm
4 PLACES	± ---
3 PLACES	± ---
2 PLACES	± 0.25
1 PLACE	± 0.5
ANGULAR ± ---°	

DRAWN BY	DATE
FZHANG01	2011/04/29
CHECKED BY	DATE
JFZHENG	2011/04/29
APPROVED BY	DATE
ZXDENG	2011/05/11

THIRD ANGLE PROJECTION	
MOLEX INCORPORATED	
MATERIAL NO.	DOCUMENT NO.
687670019	SD-68767-0019
SHEET NO.	2 OF 2

6

5

4

3

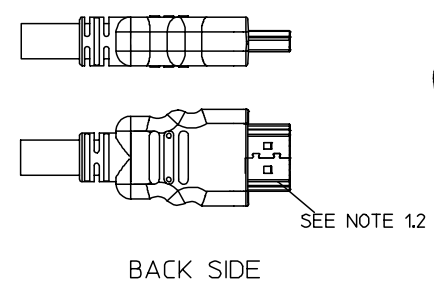
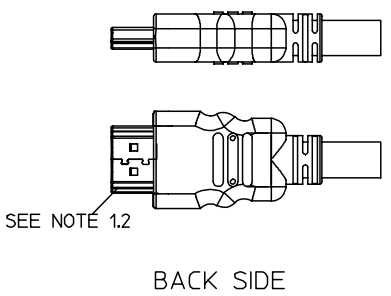
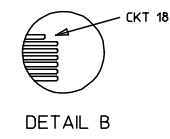
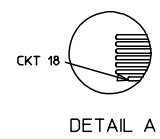
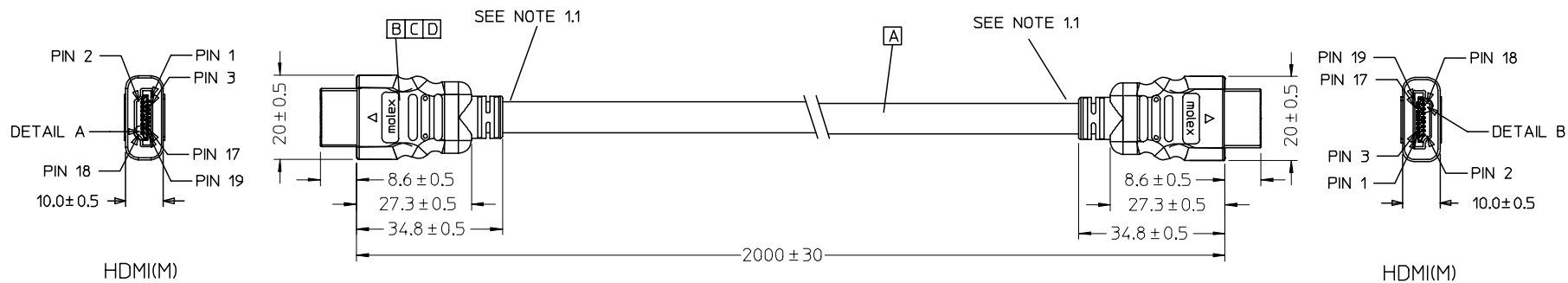
2

1

7 6 5 4 3 2 1

E
D
C
B
A

E
D
C
B
A



Released EC NO: DG2007-0027 DRWN: JFZHENG CHKD: JFZHENG APPR: DQ LUO	2006/09/02 2006/09/04 2006/09/04	QUALITY SYMBOLS ▽=0 ◻=0	GENERAL TOLERANCES (UNLESS SPECIFIED)		DIMENSION STYLE MM ONLY		SCALE ---	DESIGN UNITS METRIC	THIRD ANGLE PROJECTION			
			4 PLACES ± --- ± --- 3 PLACES ± --- ± --- 2 PLACES ± --- ± --- 1 PLACE ± --- ± ---	mm INCH	DRAWN BY JFZHENG	DATE 2006/08/26	TITLE HDMI(M) TO HDMI(M) GOLD 2M CABLE, 28#AWG					
			ANGULAR ± ---°	DRAFT WHERE APPLICABLE MUST REMAIN WITHIN DIMENSIONS		CHECKED BY JF ZHNENG	DATE 2006/08/26	MOLEX INCORPORATED				
			1			APPROVED BY DQ LUO	DATE 2006/08/26	MATERIAL NO. 687670019	DOCUMENT NO. SD-68767-019	SHEET NO. 1 OF 2		
			REV			SIZE A 4	THIS DRAWING CONTAINS INFORMATION THAT IS PROPRIETARY TO MOLEX INCORPORATED AND SHOULD NOT BE USED WITHOUT WRITTEN PERMISSION					

WIRE DIAGRAM:

SHIELD	SHIELD	OVERALL SHIELD	GROUND
PIN 19	PIN 19	PINK	HOT PLUG DETECT
PIN 18	PIN 18	ORANGE	+5V POWER
PIN 17	PIN 17	YELLOW	DDC/CEC GROUND
PIN 16	PIN 16	WHITE	SDA
PIN 15	PIN 15	RED	SCL
PIN 14	PIN 14	VIOLET	RESERVED
PIN 13	PIN 13	GRAY	CEC
PIN 12	PIN 12	WHITE	TMDS CLOCK-
PIN 11	PIN 11	BRAID	TMDS CLOCK SHIELD
PIN 10	PIN 10	WHITE/BLACK	TMDS CLOCK+
PIN 9	PIN 9	WHITE	TMDS DATA 0-
PIN 8	PIN 8	BRAID	TMDS DATA 0 SHIELD
PIN 7	PIN 7	WHITE/BLUE	TMDS DATA 0+
PIN 6	PIN 6	WHITE	TMDS DATA 1-
PIN 5	PIN 5	BRAID	TMDS DATA 1 SHIELD
PIN 4	PIN 4	WHITE/GREEN	TMDS DATA 1+
PIN 3	PIN 3	WHITE	TMDS DATA 2-
PIN 2	PIN 2	BRAID	TMDS DATA 2 SHIELD
PIN 1	PIN 1	WHITE/RED	TMDS DATA 2+
HDMI	HDMI	COLOR	CABLE FUNCTION

NOTE:


- OVEMROLD SPECIFICATION:
 - HDMI INNERMOLD WITH BK PVC 887800019.
 - HDMI OVERMOLD WITH PVC 887800150.
 - HDMI DUST COVER WITH PE 887800008.
- MECHANICAL SPECIFICATION:

CABLE SHOULD STAND THE PULL FORCE 89-111N FOR 30 SECONDS WITH NO VISIBLE TERMINATION DAMAGE.
- PRODUCT ELECTRICAL SPECIFICATION:
 - DIELECTRIC STRENGTH.
 - INSULATION RESISTANCE.
 - CONDUCTIVE RESISTANCE.
 - TMDS Signals Time Domain Impedence
 - TMDS Signals Time Domain Crosstalk:FEXT
 - TMDS Signals Skew
 - Attenuation

REFER TO ES-002 ELECTRICAL SPECIFICATION FOR DETAILS.
- CABLE CONSTRUCTION(CABLESÅ¿¿¿):

(4P+1P+5)*28AWG;SHLD;PVC;BK;7.30MM;HDMI
- THIS PRODUCT MUST MEET ROHS COMPLIANCE.

D	HDMI METAL PLATE 47152-6009		2
C	HDMI METAL CAN GOLD FLASH 47152-4002		2
B	HDMI HOUSING ASSY BLACK 47152-1000		2
A	HDMI SINGLE LINK CABLE,OD=7.3mm, 172000455	2000 ref.	1
ITEM	DESCRIPTION	LENGTH	QTY.

Released EC NO: DG2007-0027 DRWN: JFZHENG 2006/09/02 CHKD: JFZHENG 2006/09/04 APPR: DDLUO 2006/09/04	DESCRIPTION QUALITY SYMBOLS ▽=0 ◻=0	GENERAL TOLERANCES (UNLESS SPECIFIED)		DIMENSION STYLE MM ONLY		SCALE ---	DESIGN UNITS METRIC	THIRD ANGLE PROJECTION	
			mm	INCH	DRAWN BY XUEHUI	DATE 2006/08/26	TITLE HDMI(M) TO HDMI(M) GOLD 2M CABLE,28#AWG		
		4 PLACES	±---	±---	CHECKED BY JF ZHNENG	DATE 2006/08/26	 MOLEX INCORPORATED		
		3 PLACES	±---	±---	APPROVED BY DQ LUO	DATE 2006/08/26			
2 PLACES	±---	±---	ANGULAR ±---°		MATERIAL NO. 686760019	DOCUMENT NO. SD-68767-019	SHEET NO. 2 OF 2		
1 PLACE	±---	±---	DRAFT WHERE APPLICABLE MUST REMAIN WITHIN DIMENSIONS		THIS DRAWING CONTAINS INFORMATION THAT IS PROPRIETARY TO MOLEX INCORPORATED AND SHOULD NOT BE USED WITHOUT WRITTEN PERMISSION				