

|     |            |                  |                        |        |          |
|-----|------------|------------------|------------------------|--------|----------|
| REV | CTDI**E*** | REVISION HISTORY |                        |        |          |
| D   |            | REV              | DESCRIPTION            | DATE   | APPROVED |
|     |            | D                | REVISED PER E.O. C6428 | 060210 | D.W.     |

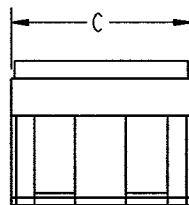
8. SIMILAR TO CTDI26E01A EXCEPT USES FIVE DIELECTRICALLY SEPARATED BUS PLATES.

9. SIMILAR TO CTDI26E01A EXCEPT USES TWO DIELECTRICALLY SEPARATED BUS PLATES.

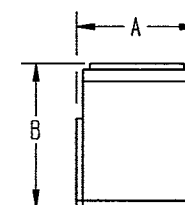
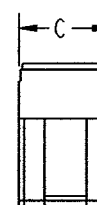
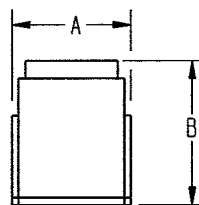
8. SEE DRAWING #CTJ-R00 FOR APPLICABLE MODULE INSERTION & REMOVAL TOOL. (2 REQUIRED FOR CTDI26E TYPE MODULES)

7. REQUIRED CONTACT TOOL PART NUMBERS:

| SIZE | INSERTION/EXTRACTION TOOL   |
|------|-----------------------------|
| 12   | M81969/16-03 OR M81969/8-10 |
| 16   | M81969/14-03                |
| 20   | M81969/14-10                |
| 22   | M81969/14-01                |



CTDI26E\*\*\*  
CTDI062E\*\*\* (SIZE 12 MODULE)



CTDI60E01F (SIZE 16 MODULE)

| PART NUMBER | CONTACT QUANTITY & SIZE                                     | A ± .010 | B MAX | C ± .010 |
|-------------|---|----------|-------|----------|
| CTDI26E01A  | 2 SIZE 12 & 6 SIZE 16                                       | .672     | 1.047 | 1.020    |
| CTDI60E01F  | 2 SIZE 16 & 6 SIZE 20                                       | .672     | .920  | .510     |
| CTDI26E02E  | 2 SIZE 12 & 6 SIZE 16                                       | .672     | 1.047 | 1.020    |
| CTDI062E05A | 5 INDIVIDUAL BUSES WITH<br>1 SIZE 22, 1 SIZE 20 & 1 SIZE 16 | .672     | .920  | 1.020    |

ALL SHEETS ARE THE SAME REVISION STATUS

6. SEE ENVELOPE DRAWING CTJ-3\*-\*\* FOR SUITABLE RAIL ASSEMBLIES.

5. FOR CONTACT DATA SEE ENVELOPE DWG. 1625-1-0000.

4. CTDI\*\*E\*\*\*



3. THE BUS IDENTIFICATION WILL BE SCREENED ON MODULE ASSY. FOR AVAILABLE MODULE ARRANGEMENT SEE ENVELOPE DWG. CTD500.

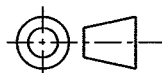
2. SEE "GENERAL DESCRIPTION" FOR ELECTRICAL AND MATERIAL SPECIFICATION.

1. DIMENSIONS ARE IN INCHES, UNLESS OTHERWISE SPECIFIED.

PROPERTY OF DEUTSCH E.C.D.  
THIS DRAWING CONTAINS PROPRIETARY INFORMATION THAT SHALL NOT BE DISCLOSED, DUPLICATED, NOR USED IN WHOLE OR IN PART FOR ANY PURPOSE OTHER THAN TO EVALUATE THIS DRAWING

TOLERANCE UNLESS OTHERWISE SPECIFIED  
DIMENSIONS ARE IN INCHES  
DECIMALS .XXX ± .005; .XXXX ± .0005  
ANGLES: X° ± .5°; X.X° ± .25°  
T.I.R. .010  
PARTS TO BE FREE OF BURRS & SHARP EDGES

THIRD ANGLE PROJECTION



| SIGNATURE & DATE |                          |
|------------------|--------------------------|
| DR               | R. COTO 060109           |
| CHK              | <i>D. Whitace</i> 060210 |
| PE               | R. COTO 060109           |
| APPD             | <i>Reynolds</i> 060213   |
| MATERIAL         |                          |
| FINISH           |                          |
| MATERIAL CODE    |                          |

|  |                    |                      |
|--|--------------------|----------------------|
| DEUTSCH<br>DEFENSE/AEROSPACE OPERATION<br>5733 WEST WHITTIER AVE.<br>HEMET, CA 92545 |                    |                      |
| TITLE MODULE ASSEMBLY,<br>DISTRIBUTION JUNCTION, ENVIRONMENTAL<br>ENVELOPE           |                    |                      |
| SIZE<br>B  | CAGE CODE<br>11139 | DWG NO<br>CTDI**E*** |
| SCALE<br>NONE  | WEIGHT             | SHEET 1 OF 1         |