

Device connector, front mounting - RC-17S1N122000 - 1601822

Please be informed that the data shown in this PDF Document is generated from our Online Catalog. Please find the complete data in the user's documentation. Our General Terms of Use for Downloads are valid (<http://phoenixcontact.com/download>)



Device connector for front wall, straight, shielded: yes, Screw locking, M23, Number of positions: 17, Type of contact: Socket, Solder connection, Flat gasket, 4xØ2,7

The figure shows the 12-pos. product version



Key Commercial Data

Packing unit	40 STK
GTIN	
GTIN	4046356236751

Technical data

Data of the insulating body

Coding	N
Insertion/withdrawal cycles mechanical	50
Contact connection method	Solder connection
Type of contacts	Socket
Number of positions	17
Contact diameter of power contacts	1 mm
Litz wire cross section of power contacts min.	0.08 mm ²
Litz wire cross section of power contacts max.	1 mm ²
Nominal current per power contact at 25°C	8 A
Nominal voltage, power contact	150 V
Rated surge voltage	1.5 kV
Overvoltage category	II
Degree of pollution	3

Housing data

Note	Order information: Order contact inserts separately
Housing material	Metal

Device connector, front mounting - RC-17S1N122000 - 1601822

Technical data

Housing data

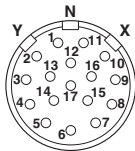
Type of locking	Screw locking
Degree of protection (when plugged in)	IP67
Thread type	M23

Environmental Product Compliance

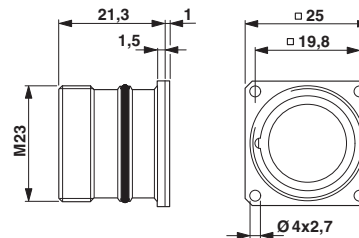
China RoHS	Environmentally Friendly Use Period = 50
	For details about hazardous substances go to tab "Downloads", Category "Manufacturer's declaration"

Drawings

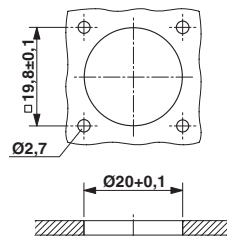
Schematic diagram



Dimensional drawing



Dimensional drawing



Installation dimensions
Flat gasket, radial O-ring

Approvals

Approvals

Approvals

EAC

Ex Approvals

Approval details

Device connector, front mounting - RC-17S1N122000 - 1601822

Approvals

EAC



B.01742

Phoenix Contact 2017 © - all rights reserved
<http://www.phoenixcontact.com>

PHOENIX CONTACT GmbH & Co. KG
Flachsmarktstr. 8
32825 Blomberg
Germany
Tel. +49 5235 300
Fax +49 5235 3 41200
<http://www.phoenixcontact.com>