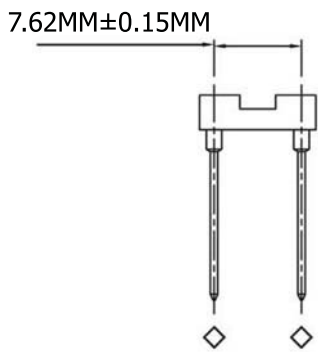
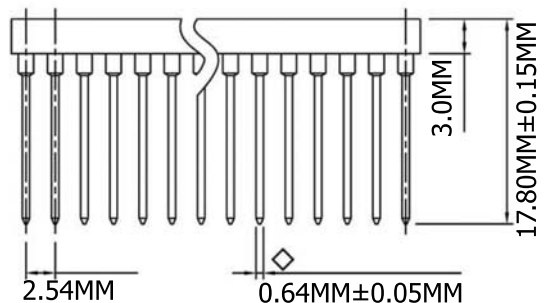
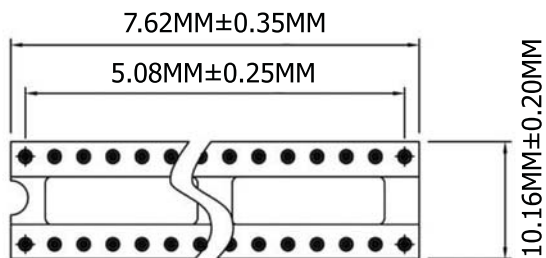
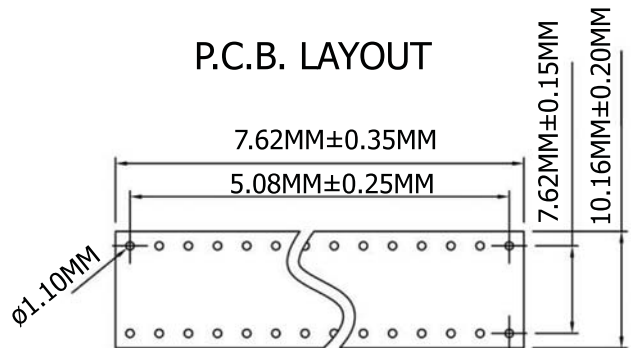


P.C.B. LAYOUT



Materials

Pin (outer sleeve) : Brass, machined, CuZn38Pb2
 Clip (contact 4 finger) : Beryllium copper, heat treated or PHBZ
 Plating (outer sleeve) : Tin plated : 2µm/80µ"nickel, 5µm/200µ" Tin
 Plating clip (contact) : 2µm/80µ"nickel, Gold
 Insulator body (black) : Glass filled thermoplastic polyester UL94V-0

Electrical

Current rating : 3 Amps/contact max.
 Contact resistance : Max 4mΩ
 Insulation resistance : Min 10,000mΩ @ 500 V AC
 Operating Voltage : 100 VRMS / 150 V AC

Mechanical

Operating temperature : Tin plated: -40°C to +105°C
 Average insertion force
 with steel pin of: 0.43mm/0.017" < 250g
 Average withdrawal force
 with steel pin of: 0.43mm/0.017" > 50g
 Mechanical life : min.200
 Packaging: Tube

A
B
C
D
E
F
G
H

A
B
C
D
E
F
G
H

Scale	1:1							Name	Item No. AR06-HZW/T-R
TOLERANCE						Drawn	11.02.11	Chappell	
X.X	±0.40					Approved			Title IDC-Socket, 6 Pin, Wire Wrap, Pitch: 2.54MM, Pin Length: 17.80MM
X.XX	±0.25								
X.XXX	±0.15								Drawing No.
Angle	±3°								
									Replace
									Sheet

