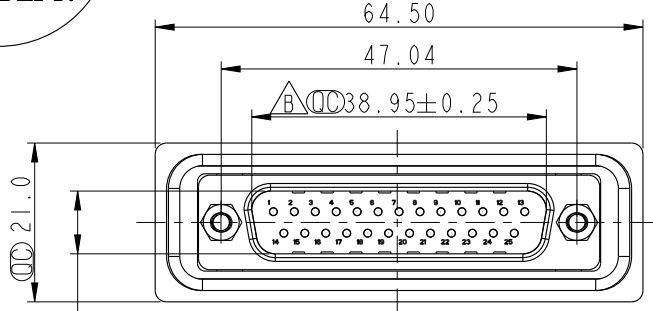
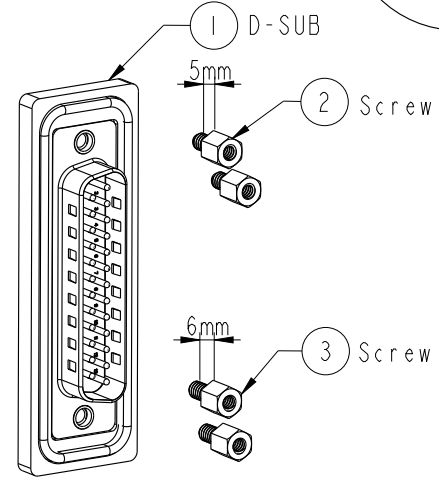
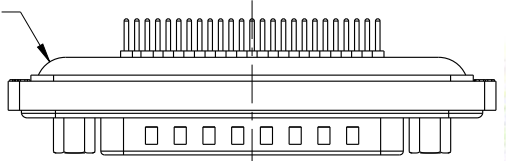
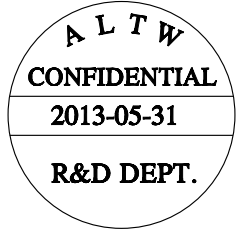
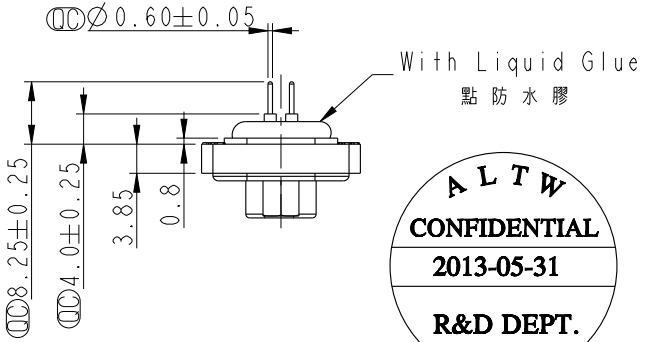
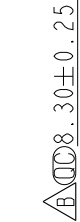


REV.	ECN NO.	DATE	SIGN	DESCRIPTION
B	LEN1350283	2013/05/31	Yulong	Update the Dimension

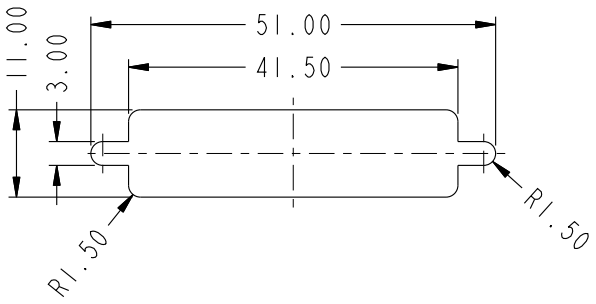


Screw L=5.0 For Panel Thickness Under 1.2mm  
適用板厚為 1.2mm 以下

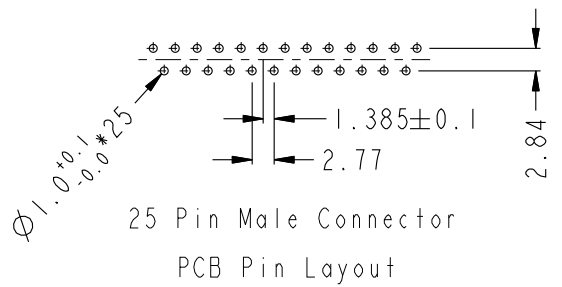
Screw L=6.0 For Panel Thickness Between 1.2~2.0mm  
適用板厚為 1.2~2.0mm



- Note:
- \*  $\varnothing$  Important Dimension.
  - \* Waterproof Rate : IP68  
IP68: 1M of depth of water 24 hours (防水等級: IP68) (IP68: 1米水深24小時)
  - \* Do Mating Test After Glued  
點膠後, 須作對插測試
  - \* D-SUB Conn. : Black Core, PBT
  - \* Plastic Jacket : Black, Nylon+GF
  - \* Pin : Copper Alloy, Gold Plated
  - \* Ring : Light Blue, Silicone
  - \* Screw : Copper Alloy, Nickel Plated, #4-40 UNC



Recommended Panel Cut-Out  
建議挖孔尺寸



UNIT: mm		
TOLERANCE	.X ±0.25	
.XX ±0.1		
.XXX ±0.05		
ANGLES	±1°	

TITLE D-SUB Conn. Panel Screw DB25P M Conn. M Pin			
SCALE 1:1	SIZE A4	SHEET 1 OF 1	
REV. B	WC-REV. A.4	$\varnothing$ : Inspection item	

**Amphenol LTW**  
安費諾亮泰企業股份有限公司

ITEM NO. SDB-25PMMP-SL8001	DRAWN BY Yulong_wang	DATE 2013-05-31
DWG NO. SDB-25PMMP-SL8001	CHECKED BY Victor	DATE 2013-05-31
CUSTOMER ALTW	APPROVED BY Maslow	DATE 2013-05-31

THIS DOCUMENT IS SUBJECT TO CHANGE WITHOUT NOTICE. IT IS CONFIDENTIAL AND A PROPERTY OF Amphenol LTW. DISCLOSURE TO THIRD PARTY HAS TO BE AUTHORIZED BY Amphenol LTW.