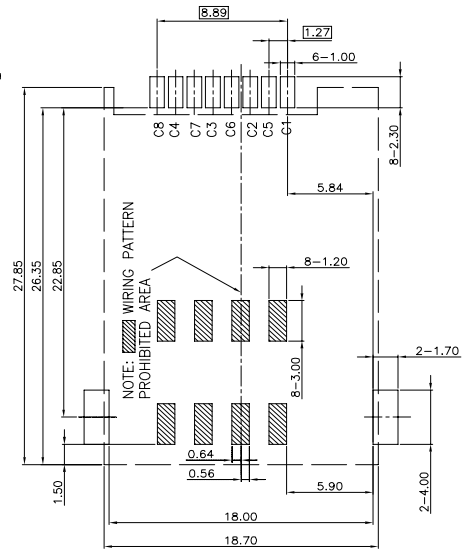
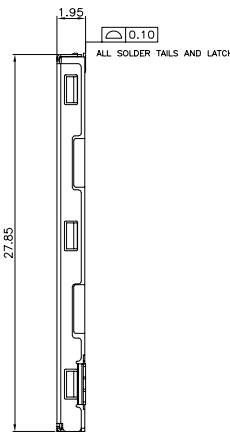
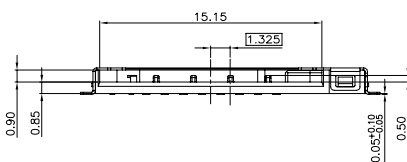
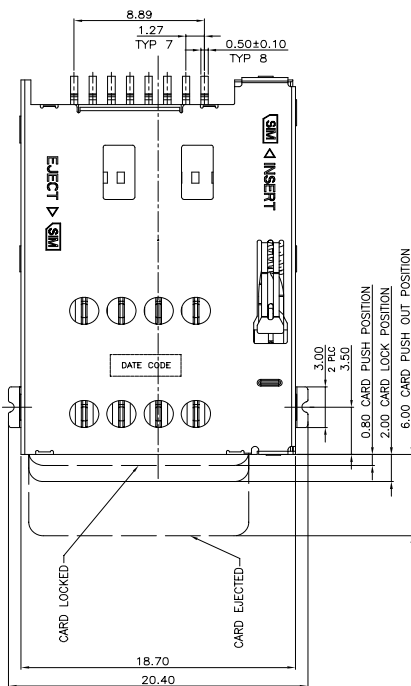




Part Number: 101-00309-**
SIM Card Reader 8PIN W/O Switch

- Push-push eject type
- SMT
- Application for mobile phones

- 1. Materials:**
 Housing: High temperature thermoplastic, UL 94V-0 rated.
 Contact: Copper alloy
 Cover: SUS304 with 80u" nickel over all, gold flash plating on contact area
- 2. Contact finish:**
 Selective 15u" gold plating on contact area, tin 120u" plating at solder tail, over nickel plating (50U" min)
- 3. Electrical specifications:**
 Voltage Rating: 100VAC
 Current Rating: 0.5A per contact
 Dielectric strength: 500VAC initial and 250VAC final for one minute
 Insulation Resistance: 500MΩ min at 500VDC
 Contact Resistance: 50mΩ max at 100mA
 Operating temperature: -25°C~+85°C
- 4. Mechanical specifications:**
 Durability: 5000cycles.
 Mating force: 20N max.
 Unmating force: 1N min
- 5. RoHS Compliant**



RECOMMENDED PCB LAYOUT

SIM pin assignment	
PIN#	Name
C1	VCC
C2	RST
C3	CLK
C4	Reserved
C5	GND
C6	VPP
C7	I/O
C8	Reserved

