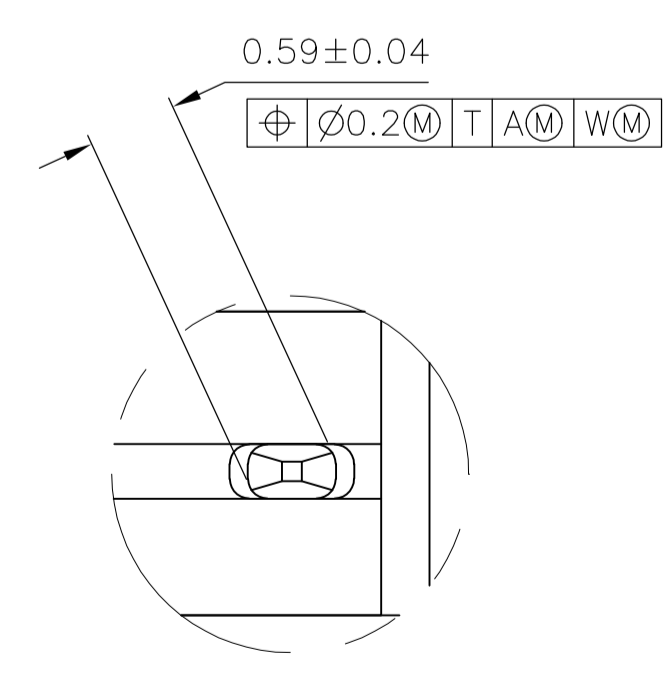
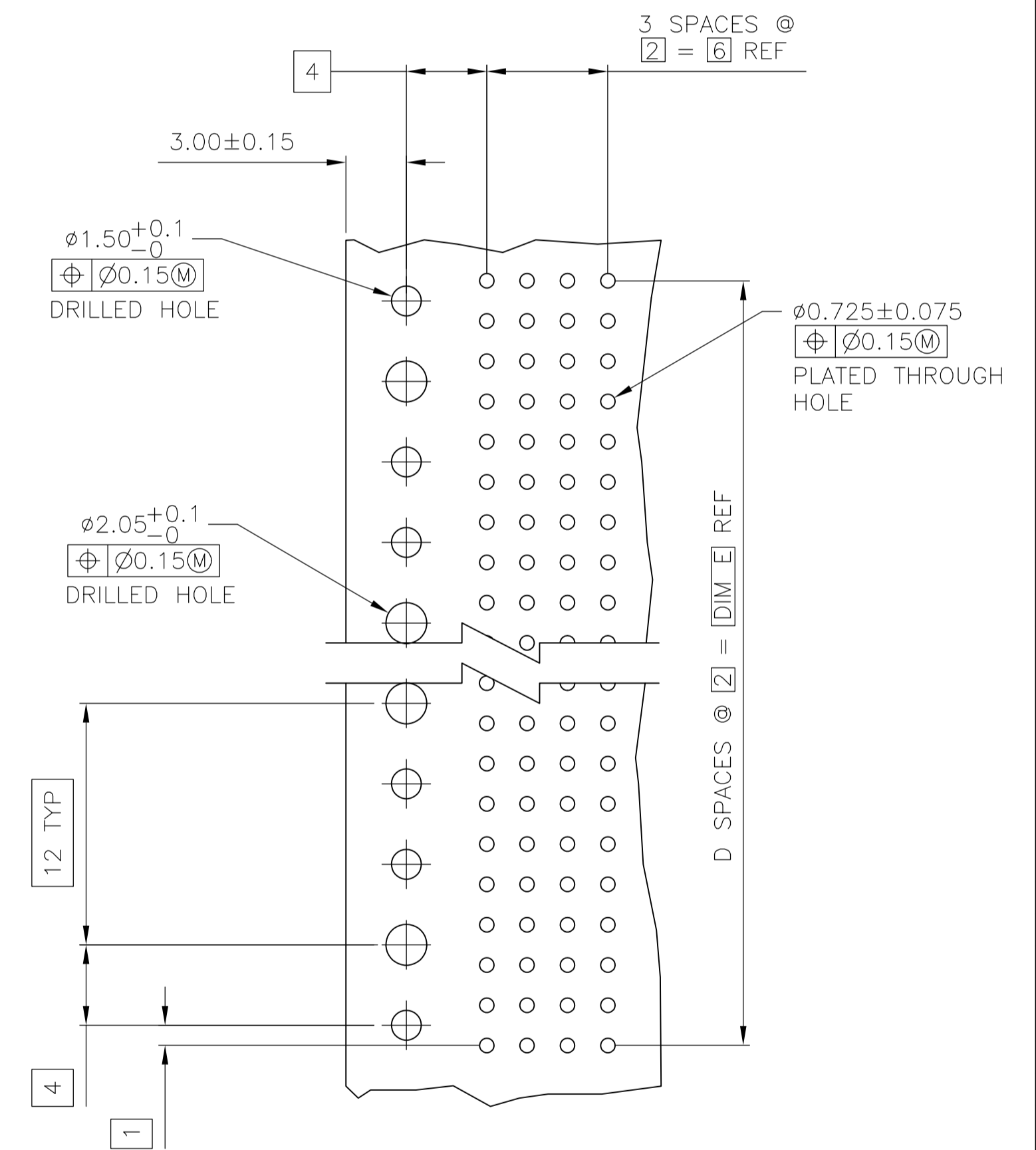


- 1 HOUSING MATERIAL: LIQUID CRYSTAL POLYMER.
- 2 CONTACT MATERIAL: PHOSPHOR-BRONZE.
- 3 CONTACT FINISH:(D)  
 UNDERPLATE (ENTIRE CONTACT):  
 0.00127 MIN NICKEL PER SAE-AMS-QQ-N-290  
 ON MATING SURFACES:  
 FLASH GOLD PER ASTM B 488, OVER  
 0.00076 MIN PALLADIUM-NICKEL OVER UNDERPLATE, OR  
 0.00076 MIN GOLD PER ASTM B 488 OVER UNDERPLATE.  
 ON LEADS:  
 0.00127 MIN MATTE TIN PER ASTM B 545 OVER UNDERPLATE.  
 LUBRICATION (MIN MATING SURFACES):  
 SURFACE CONDITIONER AFTER PLATING.



DETAIL Z  
SCALE 20:1

RECOMMENDED CIRCUIT PATTERN  
PER IPC-D300 TYPE II, CLASS C  
(COMPONENT SIDE)

10	5	6	1	11.88	3	8	5536614-1
E	D	C	B	A	FINISH	NO OF POSN	PART NUMBER
THIS DRAWING IS A CONTROLLED DOCUMENT. <span style="float: right;">D.R. BENDER 11/04/92 S. HEADER 04/20/93</span>							
DIMENSIONS: mm			TOLERANCES UNLESS OTHERWISE SPECIFIED:		Tyco Electronics Corporation Harrisburg, PA 17105-3608		Z-PACK 2mm FB, POWER MODULE, RCPT. ASSY. 4 ROW, 3.56mm LEAD LENGTH PRESS FIT LEAD
0 PLC	±	-	-		PRODUCT SPEC	SIZE CAGE CODE DRAWING NO RESTRICTED TO	
1 PLC	±	0.13	-		APPLICATION SPEC		A1 00779 C=5536614
2 PLC	±	-	-		WEIGHT	CUSTOMER DRAWING SCALE 4:1 SHEET 1 OF 1 REV 02	
3 PLC	±	-	-				
4 PLC	±	-	-				
ANGLES	±	-	-				
MATERIAL			FINISH				