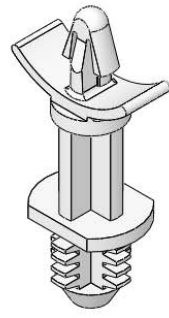


MATERIAL: NYLON 6/6 UL 94 V-2 (RMS-01) COLOR: NATURAL PART NO.	"A"±.015 [0.4]	"B"±.015	"C"±.015	HOLE DIA. ±.003 [0.08]	PANEL THICKNESS
BHDL-4-01	1/4 [6.4]	7/16 [11.1]	5/16 [7.9]	.312 [7.92]	1/4 [6.4] MIN
BHDL-6-01	3/8 [9.5]				
BHDL-8-01	1/2 [12.7]				
BHDL-10-01	5/8 [15.9]				
BHDL-12-01	3/4 [19.1]				
BHDL-14-01	7/8 [22.2]	3/8 [9.5]	17/64 [6.7]	.250 [6.35]	1/4 [6.4] MIN
*BHDL1-4-01	1/4 [6.4]				
*BHDL1-6-01	3/8 [9.5]				
*BHDL1-8-01	1/2 [12.7]				
*BHDL1-10-01	5/8 [15.9]				
*BHDL1-12-01	3/4 [19.1]				
*BHDL1-14-01	7/8 [22.2]				

\*PARTS AVAILABLE BY SPECIAL ORDER ONLY



- NOTES:  
 1. MATERIAL: NYLON 6/6 UL 94 V-0 (RMS-19),  
 COLOR: NATURAL.  
 AVAILABLE BY SPECIAL ORDER ONLY.  
 2. ALTERNATE UNITS FOR REFERENCE ONLY

TITLE: BLIND HOLE DUAL LOCKING CIRCUIT BOARD SUPPORT			DWG IN IN [MM]		FINAL	
CREATED USING SOLIDWORKS	FILE #: BHDL	DWN: SK	APP: RT			
TOLERANCES UNLESS NOTED XX=±.010 .XXX=±.005 FRAC.=±1/64 ANG.=±1°	SHEET: 1 OF 1	SHEET SIZE: A	DT: 11/28/06	CHKD: SJ	PART #	PRINT TYPE
	RE: RICHCO, INC.	RICHCO, INC. ENG@RICHCO-INC.COM (773) 539-4060		SEE TABLE		CA
F	SEE CO 200035 FOR CHANGES	SK	09/26/07			
E	SEE ECN #1262 FOR CHANGES	SK	12/11/06			
D	REDRAWN, SEE ECN #1208 FOR CHANGES	SK	11/29/06			
-	SEE ENGINEERING FOR REVISIONS A-C	---	----			
REV.	DESCRIPTION	ENGR.	DATE			