



**Product Description**

OFS 2.5 mm HCS fiber cables are designed primarily for industrial data-communication applications. Taking advantage of the durability and toughness of HCS optical fibers, these tight-buffer cables surround the fiber with high-strength aramid yarn and are protected with a tough 2.5 mm diameter PVC jacket. Simplex, zipcord, and duplex configurations are available.

**Typical Applications**

- Laser power delivery
- Industrial communications
- Factory automation
- Near-IR spectroscopy

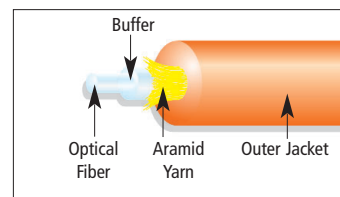
**Features and Benefits**

- Lowest cost solution for data communication jumpers
- 200 µm fiber-based for high strength and reliability
- Flame retardant
- Small and flexible constructions
- Crimp and cleave ST/SMA connectors are applied in 60 seconds or less
- All heavy metal free materials

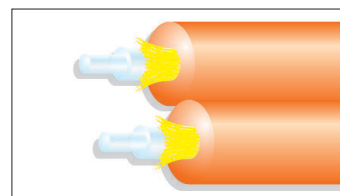
**Related Products & Capabilities**

- ST, SMA connectors sold separately
- Preterminated assemblies/jumpers
- Crimp and Cleave Termination Kits to match chosen connectors
- Insertion Loss Test Kit

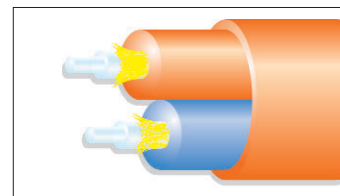
**Illustrated Cable Constructions**



Simplex  
Part # AC01281-10



Zipcord  
Part # AC01282-10



Duplex  
Part # AC03720-10

Ask us about options available with this cable construction:

- Uncabled Fiber Sub-units**
- Higher Fiber Counts**
- Additional Buffer Colors**
- Connectorization**
- Other Upgrades**

To order items on this spec sheet, please contact our facility in:

- Avon, Connecticut  
1-860-678-0371  
1-888-438-9936 toll free  
(USA and Canada only)  
Fax 1-860-674-8818
- or by email inquiry to:  
Info@SpecialtyPhotonics.com



Leading Optical Innovations

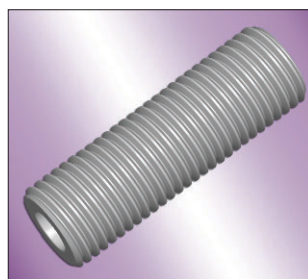
**OFS Specialty Photonics Division**

55 Darling Drive, Avon, CT 06001  
25 Schoolhouse Road, Somerset, NJ 08873  
Priorparken 680 DK-2605 Broendby, Denmark

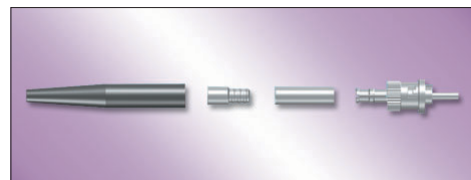
[www.SpecialtyPhotonics.com](http://www.SpecialtyPhotonics.com)

# General Purpose Cable Specifications

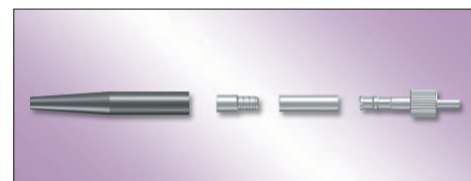
Optical Properties	2.5 Simplex 200 $\mu$ m Step-Index	2.5 Zipcord 200 $\mu$ m Step-Index	2.5 Duplex 200 $\mu$ m Step-Index
Attenuation @ 850 nm	$\leq 6$ dB/km	$\leq 6$ dB/km	$\leq 6$ dB/km
Cable Design			
Fiber core diameter	200 $\pm$ 4 $\mu$ m	200 $\pm$ 4 $\mu$ m	200 $\pm$ 4 $\mu$ m
Sub-unit diameter	not applicable	2.5 $\pm$ 0.2 mm	2.5 $\pm$ 0.2 mm
Outer cable diameter	2.5 $\pm$ 0.2 mm	2.5 x 5.2 mm	3.5 x 6.0 mm
Cable weight	6.5 kg/km	11.0 kg/km	20.0 kg/km
Fiber count/construction	Simplex	Zipcord	Duplex
Intended environment	Indoor	Indoor	Indoor
Outer jacket material	PVC	PVC	PVC
Outer jacket color	Orange	Orange	Orange
Installation and Usage Specifications			
Maximum installation tensile load	110 lbs. (489 N)	165 lbs. (734 N)	220 lbs. (979 N)
Maximum operating tensile load	55 lbs. (245 N)	85 lbs. (378 N)	110 lbs. (489 N)
Minimum bend radius under load	38 mm	38 mm	53 mm
Minimum bend radius unloaded	25 mm	25 mm	35 mm
Operating temperature	-20 to +80°C	-20 to +80°C	-20 to +80°C
Storage temperature	-40 to +80°C	-40 to +80°C	-40 to +80°C
Product Description Code	HCP-M0200T-A01VS	HCP-M0200T-A02VZ	HCP-M0200T-A02VD
Order by Part Number	AC01281-10	AC01282-10	AC03720-10



Compatible SMA Splice Bushing



Compatible ST Connector



Compatible SMA Connector

*This document is for informational purposes only and is not intended to modify or supplement any OFS warranties or specifications relating to any of its products and services.*

Copyright © 2005 Furukawa Electric North America, Inc.

All Rights Reserved.

HCS is a registered trademark in the USA of Furukawa Electric North America, Inc.  
ST is a registered trademark of Furukawa Electric North America, Inc.  
FiberWire is a trademark of Furukawa Electric North America, Inc.

0505