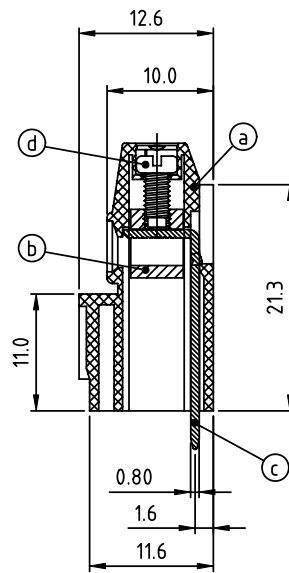
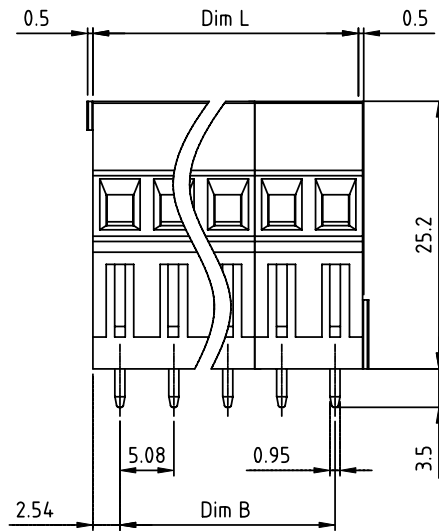
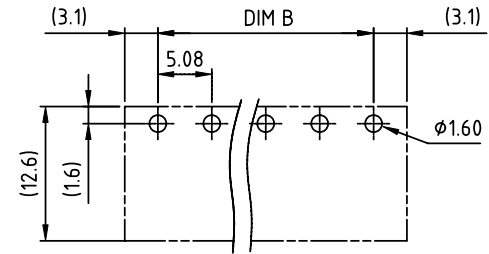
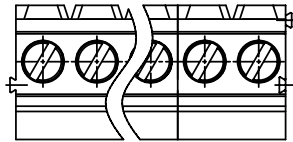


PRODUCT NUMBER	PITCH
YExx21x000J0G	5.08mm



Material:

- Item (a) Terminal housing: Thermoplastic (UL 94V-0)
- Item (d) Clamp: Brass, Ni plated
- Item (c) Solder pin: Brass, Tin plated
- Item (b) Terminal screw: Steel, Zinc plating"-slot type

Electrical cULus

- Voltage rating: 300VAC
- Current rating: 10A
- Wire range:
- Solid wire(AWG): 12-24
- Stranded wire(AWG): 12-24
- Torque(Lb-In): 3.5
- Screw: M2.5
- Wire strip length: 6-7mm
- Withstanding Voltage: 1.6KV
- Operating temperature: -40°C to +115°C
- Soldering temperature: 260°C±5°C/5 Sec
- Safety Approval:

DIMENSION

Dim L	Nx5.08
Dim B	(N-1)x5.08

N=Number of poles

Poles	Tolerance
2p~6p	±0.15
7p~12p	±0.25
13p~18p	±0.35
19p~24p	±0.40

PART NO.: YE xx 2 1 x 0 00J0 G

End stackable	0	Color	Black (RAL9005)	RoHS compliant	(lead<4%)
No. of poles	2		Red (RAL3001/D)	In copper Alloy	
	02		3 Orange(RAL2011/P)		
	03		4 Yellow(RAL1018/A)		
	...		5 Green(RAL6018/T)		
	24		6 Blue (RAL5015/A)		
			8 Grey(RAL7035/D)		
			9 White(RAL1102)		
			C Green(RAL6018/U)		

mat'l. code		surface ASME Y14.5	tolerance ASME Y14.5	projection	product family TERMINAL BLOCK
ltr	ecn no	dr	date		title
				tolerances unless otherwise specified	TERMINAL BLOCK
				angles	MM
				X±0.5	RISING CLAMP, 180D WIRE INLET, END STACKABLE
				X.X±0.3	scale
				X'±1"	X.XX±0.1
				dr	EVIN ZHONG 041014
				enr	EVIN ZHONG 041014
				chr	HANKE FENG 041014
				appd	SHI JUN 041014
sheet index	revision	A			dwg no
	sheet	1			YExx21x000J0G
				size	sheet 1 of 1
				type	A4
					CUSTOMER Drawing