

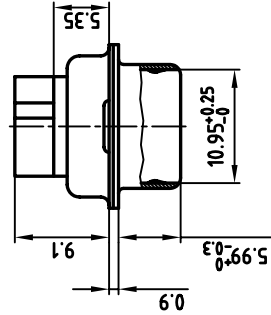
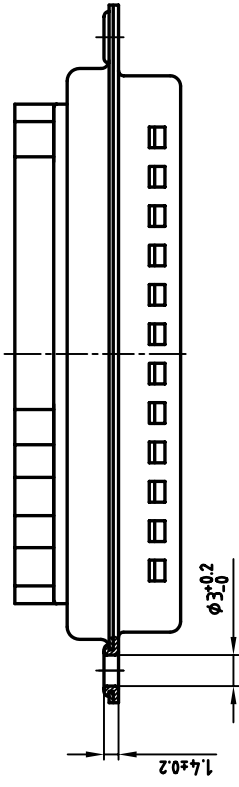
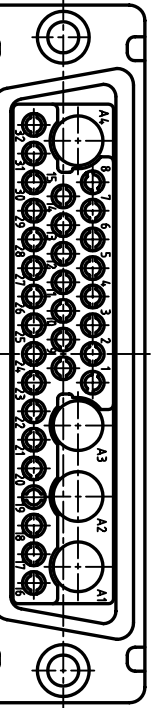
used for: D-SUB COMBINATION CRIMP

NOTES:

1. METAL SHELLS: STEEL; min. 320µ" TIN
2. INSULATORS: PBT GF UL 94 V-0, BLACK
3. = CRITICAL DIMENSION: SPC

| | | | |
|-------------|--------|--|--|
| tolerance | | 2:1 | |
| scale: | | SEE NOTES | |
| material: | | | |
| title: | | D-SUB COMBINATION MALE CRIMP STYLE 36W4P | |
| dwg no: | | AutoCAD 2000 DIN-A | |
| rev. | | 3 | |
| description | | 13K1A400A | |
| date | | sh: 1/1 | |
| name | | part no: 3036W4PKK99A10X | |
| 2001 | date | name | |
| drawn | 14.11. | Parel | |
| appd. | 14.11. | Schrader | |
| norm | | | |
| e-old | | | |

THIS DRAWING MAY NOT BE COPIED OR REPRODUCED IN ANY WAY, AND MAY NOT BE PASSED ON TO A THIRD PARTY WITHOUT WRITTEN PERMISSION. OWNERSHIP AND COPYRIGHT OF CONEC GMBH DO NOT ALTER CAD DRAWING BY HAND



Directive 2002/95/EC
RoHS
Compliant