

A

B

C

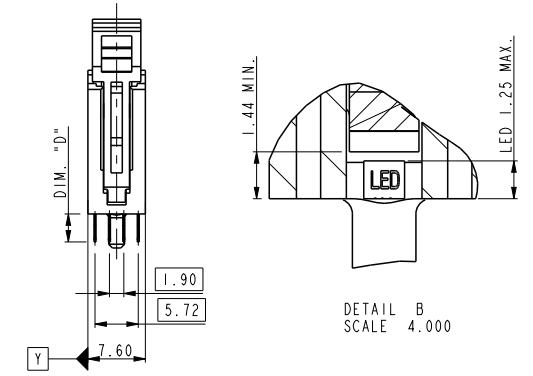
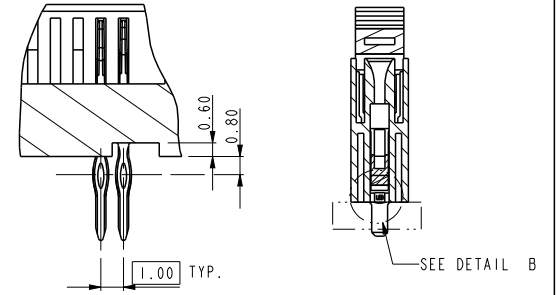
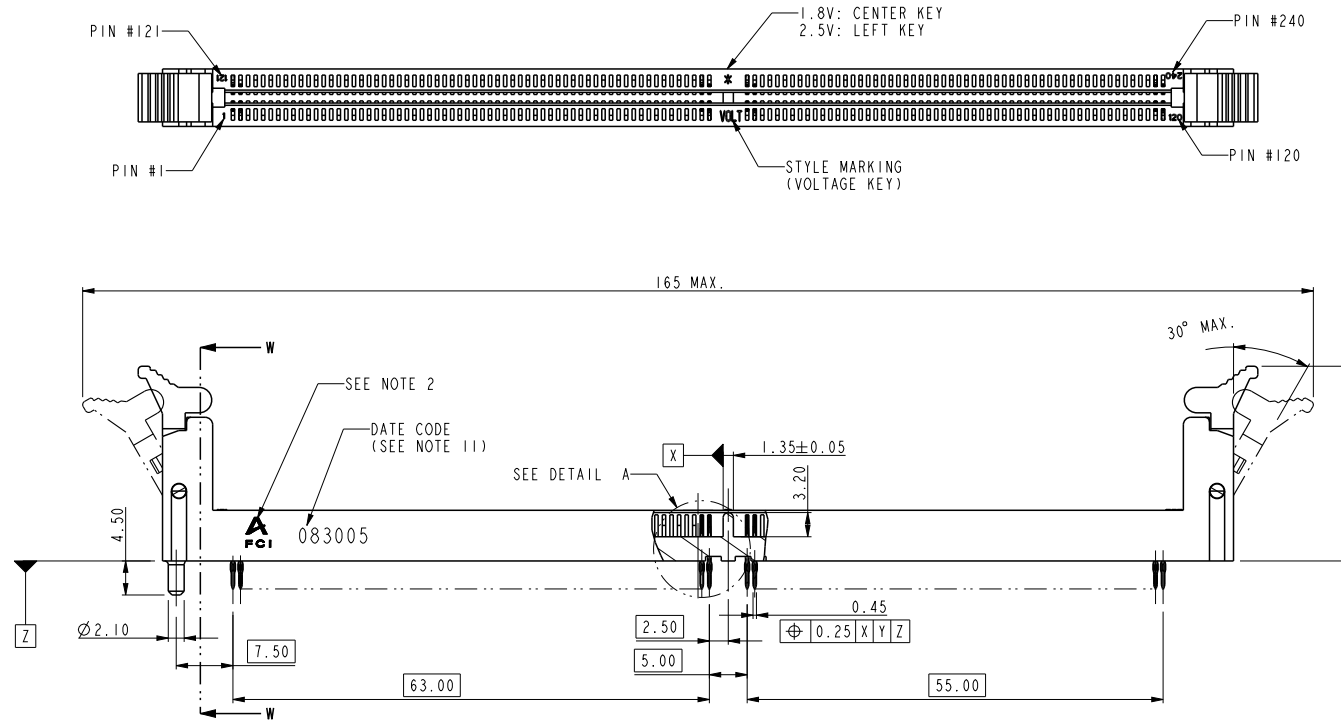
D

A

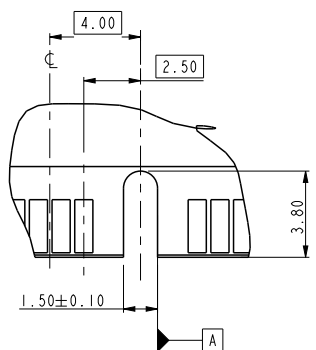
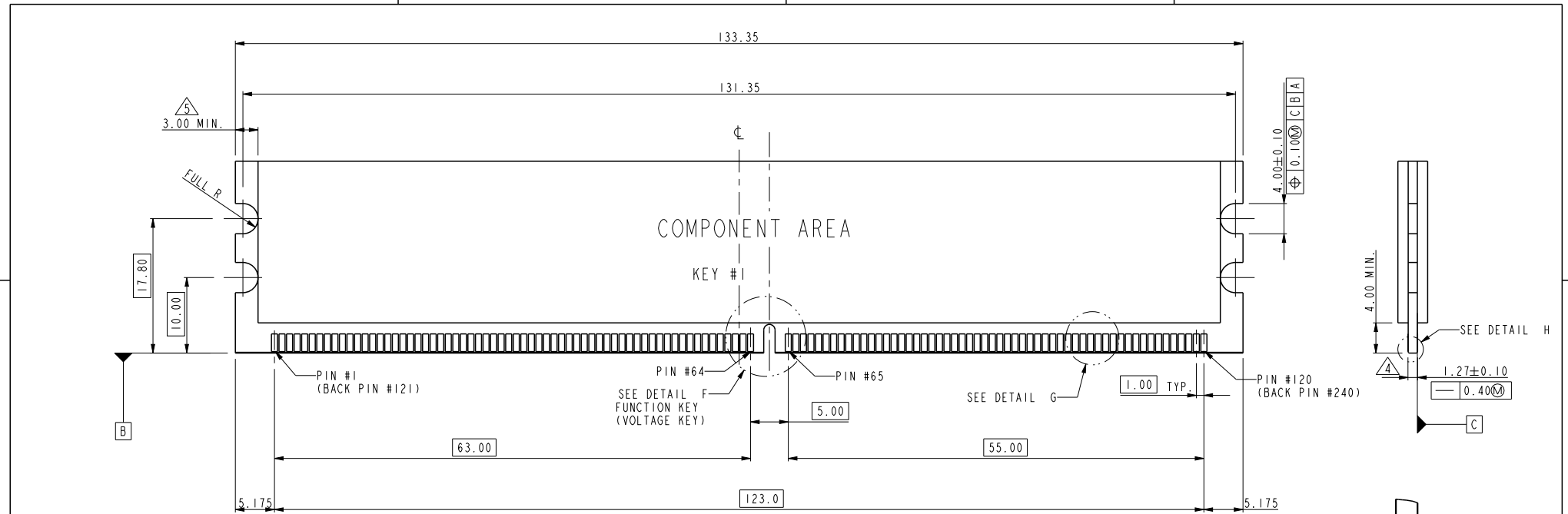
B

C

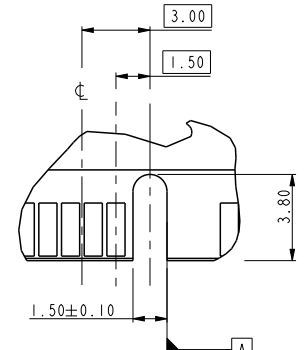
D



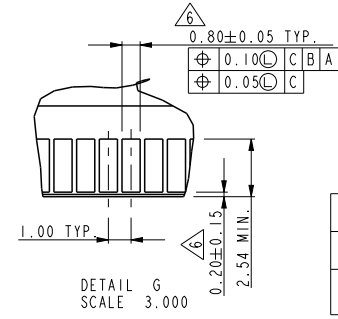
spec ref		SPEC_REF:5		dr	Nickor Zuo	2011/08/23	projection	MM	size	A4	scale	0.500
tolerance std		TOLERANCES UNLESS OTHERWISE SPECIFIED		eng	Jeny Ren	2018/01/24			←→	ecn no	ELX-DG-28708-1	
ISO 406 ISO 1101				chr	-	-				rel level	Released	
surface		linear	0.X	±0.38	appr	Nickor Zuo	2018/01/29	product family		dwg no	10072264	rev
ISO 1302			angular	0.XX		±0.25	Amphenol FCI		title			
				0.XXX	±0.13	www.fci.com		DDRII 240P PRESS-FIT ASS'Y				C
			0°	±2°	cat. no.		*					



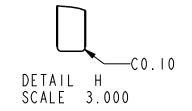
DETAIL F
KEY POSITION #1
TYPE "C"



DETAIL F
KEY POSITION #1
TYPE "L"



DETAIL G
SCALE 3.000

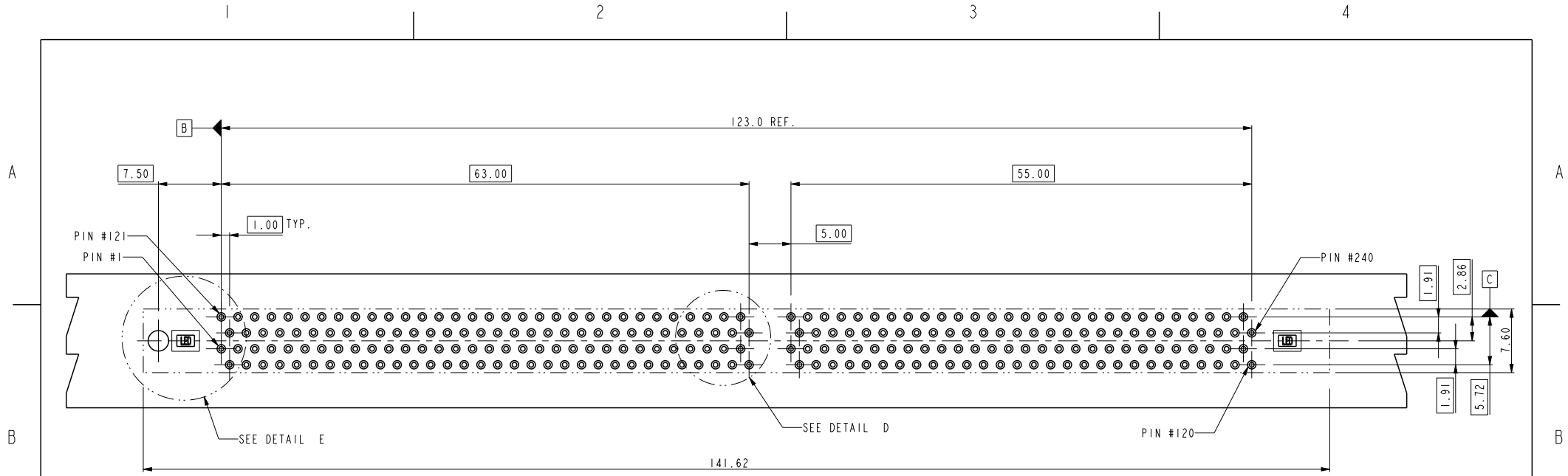


DETAIL H
SCALE 3.000

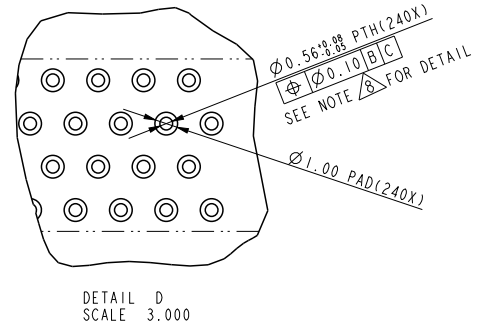
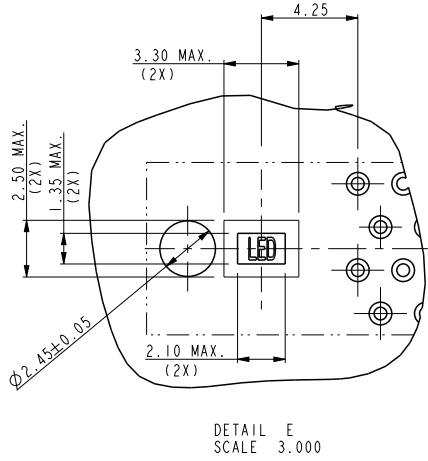
TYPE "L"	2.5 VOLTAGE
TYPE "C"	1.8 VOLTAGE
SUB KEY POS #1	DESCRIPTION

spec ref	*	dr	Nickor Zuo	2011/08/23	projection	MM	size	A4	scale	0.500
tolerance std	ISO 406 ISO 1101	eng	Jeny Ren	2018/01/24			ecn no	ELX-DG-28708-1		
TOLERANCES UNLESS OTHERWISE SPECIFIED		chr	-	-			rel level	Released		
surface		appr	Nickor Zuo	2018/01/29	product family					
linear		0.X	±0.38		title	DDR11 240P PRESS-FIT ASS'Y				
angular	0°	±2°	www.fci.com		cat. no.	*	Product - Customer Drw	sheet 2 of 4		
ISO 1302						dwg no	10072264		rev	C

Creo File - REV E - 2016-02-12



RECOMMEND CIRCUIT BOARD HOLE LAYOUT



spec ref *		dr	Nickor Zuo	2011/08/23	projection 	MM ←→	size	A4	scale	0.500			
tolerance std		eng	Jeny Ren	2018/01/24			ecn no	ELX-DG-28708-1					
ISO 406 ISO 1101		chr	-	-				rel level		Released			
surface		appr		Nickor Zuo	2018/01/29	product family		rev					
ISO 1302	linear	0.X	±0.38		Amphenol FCI	title		DDRII 240P PRESS-FIT ASS'Y		dwg no	10072264		C
		0.XX	±0.25										
0.XXX	±0.13												
angular	0°	±2°		www.fci.com	cat. no.	*	Product - Customer Drw		sheet 3 of 4				

A

B

C

D

10072264-□□□□

STYLE: MECHANICAL KEYING

1 : 1.8 VOLT. W/CENTER KEY #1
2 : 2.5 VOLT. W/LEFT KEY #1

REVISE

0

TAIL LENGTH

CODE	DIM. "D"
0	3.30
1	3.70
2	4.20

PLATING

CODE	CONTACT	TAIL AREA	UNDERPLATE
2	15u" (0.38um) MIN. GOLD	35u"~100u" Tin PLATING	50u" (1.27um) MIN. NICKEL OVERALL
3	30u" (0.76um) MIN. GOLD		
4	3u" (0.076um) MIN. GOLD		
6	15u" (0.38um) MIN. GOLD (LUBRICATED)	35u"~100u" Tin PLATING	50u" (1.27um) MIN. NICKEL OVERALL
7	30u" (0.76um) MIN. GOLD (LUBRICATED)		
8	3u" (0.076um) MIN. GOLD (LUBRICATED)		
2LF	15u" (0.38um) MIN. GOLD	35u"~100u" Tin PLATING	50u" (1.27um) MIN. NICKEL OVERALL
3LF	30u" (0.76um) MIN. GOLD		
4LF	3u" (0.076um) MIN. GOLD		
6LF	15u" (0.38um) MIN. GOLD (lubricated)	35u"~100i" Tin PLATING	50u" (1.27um) MIN. NICKEL OVERALL
7LF	30u" (0.76um) MIN. GOLD (LUBRICATED)		
8LF	3u" (0.076um) MIN. GOLD (LUBRICATED)		

NOTE:

- MATERIAL:
HOUSING: HIGH PERFORMANCE RESINS, GLASS FILLED UL94V-0 RATED, COLOR: BLACK.
EJECTOR: HIGH PERFORMANCE RESINS, GLASS FILLED UL94V-0 RATED, COLOR: NATURAL.
TERMINAL: COPPER ALLOY.
- FCI LOGO TO BE APPROXIMATELY LOCATED AS SHOWN ON PRINT.
- PRODUCT SPECIFICATION: GS-12-273
- CARD THICKNESS APPLIES ACROSS TABS AND INCLUDES PLATING AND / OR METALIZATION.
- 3.00mm MINIMUM APPLIES TO BOTH 4.00mm WIDE NOTCH LENGTH AND COMPONENT KEEPOUT AREA.
- LEADING EDGE OF CONTACT PADS SPECIFIED BY THE KEEP OUT ZONE SHALL BE FREE OF BURRS AND EXTERNAL TIE BARS.
FOR OPTIMUM PERFORMANCE, THE TIE BAR IS TO BE ON AN INTERNAL LAYER SO THAT THE REMNANT CANNOT CAUSE CONTACT DAMAGE.
- PACKAGING SPECIFICATION: GS-14-528.
- ALL PTH SHOULD BE 0.66mm DIA DRILLED AND 0.025mm MIN. ELECTRO-DEPOSITED COPPER THK ON THROUGH HOLE WALL.
- THIS PRODUCT MEETS EUROPEAN UNION DIRECTIVES AND OTHER COUNTRY REGULATIONS AS DESCRIBED IN GS-22-008.
- THE HOUSING WILL WITHSTAND EXPOSURE TO 260° PEAK TEMPERATURE FOR 20 SECONDS IN A IR REFLOW OVEN.

DATE CODE: X X X X X X

YEAR
DATE
MONTH



COLOR OF HOUSING AN EJECTOR

- 0 : BLACK HOUSING + IVORY EJECTOR
1 : BLACK HOUSING + AMBER COLOR EJECTOR
2 : BLACK HOUSING + BLACK EJECTOR

dr	Nickor Zuo	2011/08/23	projection 	MM 	size	A4	scale	0.500	
eng	Jeny Ren	2018/01/24			ecn no	ELX-DG-28708-1			
chr	-	-			rel level	Released			
appr	Nickor Zuo	2018/01/29	product family			rev	C		
Amphenol FCI		title			DDR11 240P PRESS-FIT ASS'Y		dwg no		10072264
www.fci.com		cat. no.			Product - Customer Drw		sheet 4 of 4		