

| REVISIONS | | | |
|-----------|---------------------------|---------|----------|
| LTR | DESCRIPTION | DATE | APPROVED |
| K1 | REVISED PER ECO-11-005139 | 29MAR11 | HMR |

IF THIS DOCUMENT IS PRINTED IT BECOMES UNCONTROLLED.
CHECK FOR THE LATEST REVISION.

DK-621-14XX-XX CONNECTORS ARE NOT AVAILABLE FOR NEW ORDERS. ORDER EQUIVALENT DK-621-04XX-XX CONNECTOR.

| PART NUMBER | CONNECTOR | CONTACT | CONNECTOR INTERFACE | COLOR CODE | PART NUMBER | CONNECTOR | CONTACT | CONNECTOR INTERFACE | COLOR CODE |
|-----------------|-----------|---------|---------------------|------------|----------------|-----------|---------|---------------------|------------|
| DK-621-0433 | PLUG | _____ | A | RED | DK-621-1433 | PLUG | _____ | A | RED |
| DK-621-0433-1P | PLUG | PIN | A | RED | DK-621-1433-1P | PLUG | PIN | A | RED |
| DK-621-0433-1UP | PLUG | PIN | A | RED | _____ | _____ | _____ | _____ | _____ |
| DK-621-0433-1S | PLUG | SOCKET | A | RED | DK-621-1433-1S | PLUG | SOCKET | A | RED |
| DK-621-0433-1US | PLUG | SOCKET | A | RED | _____ | _____ | _____ | _____ | _____ |
| DK-621-0434 | JACK | _____ | A | RED | DK-621-1434 | JACK | _____ | A | RED |
| DK-621-0434-1P | JACK | PIN | A | RED | DK-621-1434-1P | JACK | PIN | A | RED |
| DK-621-0434-1UP | JACK | PIN | A | RED | _____ | _____ | _____ | _____ | _____ |
| DK-621-0434-1S | JACK | SOCKET | A | RED | DK-621-1434-1S | JACK | SOCKET | A | RED |
| DK-621-0434-1US | JACK | SOCKET | A | RED | _____ | _____ | _____ | _____ | _____ |
| DK-621-0435 | PLUG | _____ | B | WHITE | DK-621-1435 | PLUG | _____ | B | WHITE |
| DK-621-0435-2P | PLUG | PIN | B | WHITE | DK-621-1435-2P | PLUG | PIN | B | WHITE |
| DK-621-0435-2UP | PLUG | PIN | B | WHITE | _____ | _____ | _____ | _____ | _____ |
| DK-621-0435-2S | PLUG | SOCKET | B | WHITE | DK-621-1435-2S | PLUG | SOCKET | B | WHITE |
| DK-621-0435-2US | PLUG | SOCKET | B | WHITE | _____ | _____ | _____ | _____ | _____ |
| DK-621-0436 | JACK | _____ | B | WHITE | DK-621-1436 | JACK | _____ | B | WHITE |
| DK-621-0436-2P | JACK | PIN | B | WHITE | DK-621-1436-2P | JACK | PIN | B | WHITE |
| DK-621-0436-2UP | JACK | PIN | B | WHITE | _____ | _____ | _____ | _____ | _____ |
| DK-621-0436-2S | JACK | SOCKET | B | WHITE | DK-621-1436-2S | JACK | SOCKET | B | WHITE |
| DK-621-0436-2US | JACK | SOCKET | B | WHITE | _____ | _____ | _____ | _____ | _____ |
| DK-621-0437 | PLUG | _____ | C | GREEN | DK-621-1437 | PLUG | _____ | C | GREEN |
| DK-621-0437-3P | PLUG | PIN | C | GREEN | DK-621-1437-3P | PLUG | PIN | C | GREEN |
| DK-621-0437-3UP | PLUG | PIN | C | GREEN | _____ | _____ | _____ | _____ | _____ |
| DK-621-0437-3S | PLUG | SOCKET | C | GREEN | DK-621-1437-3S | PLUG | SOCKET | C | GREEN |
| DK-621-0437-3US | PLUG | SOCKET | C | GREEN | _____ | _____ | _____ | _____ | _____ |
| DK-621-0438 | JACK | _____ | C | GREEN | DK-621-1438 | JACK | _____ | C | GREEN |
| DK-621-0438-3P | JACK | PIN | C | GREEN | DK-621-1438-3P | JACK | PIN | C | GREEN |
| DK-621-0438-3UP | JACK | PIN | C | GREEN | _____ | _____ | _____ | _____ | _____ |
| DK-621-0438-3S | JACK | SOCKET | C | GREEN | DK-621-1438-3S | JACK | SOCKET | C | GREEN |
| DK-621-0438-3US | JACK | SOCKET | C | GREEN | _____ | _____ | _____ | _____ | _____ |
| DK-621-0439 | PLUG | _____ | D | N/A | DK-621-1439 | PLUG | _____ | D | N/A |
| DK-621-0439-4P | PLUG | PIN | D | N/A | DK-621-1439-4P | PLUG | PIN | D | N/A |
| DK-621-0439-4UP | PLUG | PIN | D | N/A | _____ | _____ | _____ | _____ | _____ |
| DK-621-0439-4S | PLUG | SOCKET | D | N/A | DK-621-1439-4S | PLUG | SOCKET | D | N/A |
| DK-621-0439-4US | PLUG | SOCKET | D | N/A | _____ | _____ | _____ | _____ | _____ |
| DK-621-0440 | JACK | _____ | D | N/A | DK-621-1440 | JACK | _____ | D | N/A |
| DK-621-0440-4P | JACK | PIN | D | N/A | DK-621-1440-4P | JACK | PIN | D | N/A |
| DK-621-0440-4UP | JACK | PIN | D | N/A | _____ | _____ | _____ | _____ | _____ |
| DK-621-0440-4S | JACK | SOCKET | D | N/A | DK-621-1440-4S | JACK | SOCKET | D | N/A |
| DK-621-0440-4US | JACK | SOCKET | D | N/A | _____ | _____ | _____ | _____ | _____ |

© 2009,2011 Tyco Electronics Corporation, a TE connectivity Ltd, company All Rights Reserved.

CUSTOMER DRAWING

UNLESS OTHERWISE SPECIFIED
DIMENSIONS ARE IN INCHES
AND METRIC DIMENSIONS
ARE IN BRACKETS.

| | | |
|----------|------------|---------|
| DRAWN | J.B.K. | 92Mar03 |
| CHECKED | G.Rositano | 09Mar12 |
| APPROVED | Z.TEMAN | 92Mar03 |

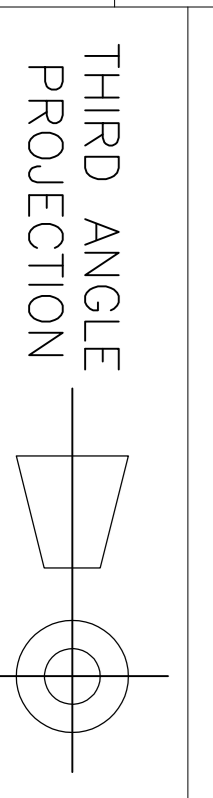
| | | |
|------------|-----------------|---|
| STE | TE Connectivity | Raychem Databus |
| | | 300 Constitution Drive Menlo Park, CA 94025 U.S.A. |

DECIMALS [----mm]
.XXX ± ---- [----mm]
.XX ± ---- [----mm]
ANGLES ± ----

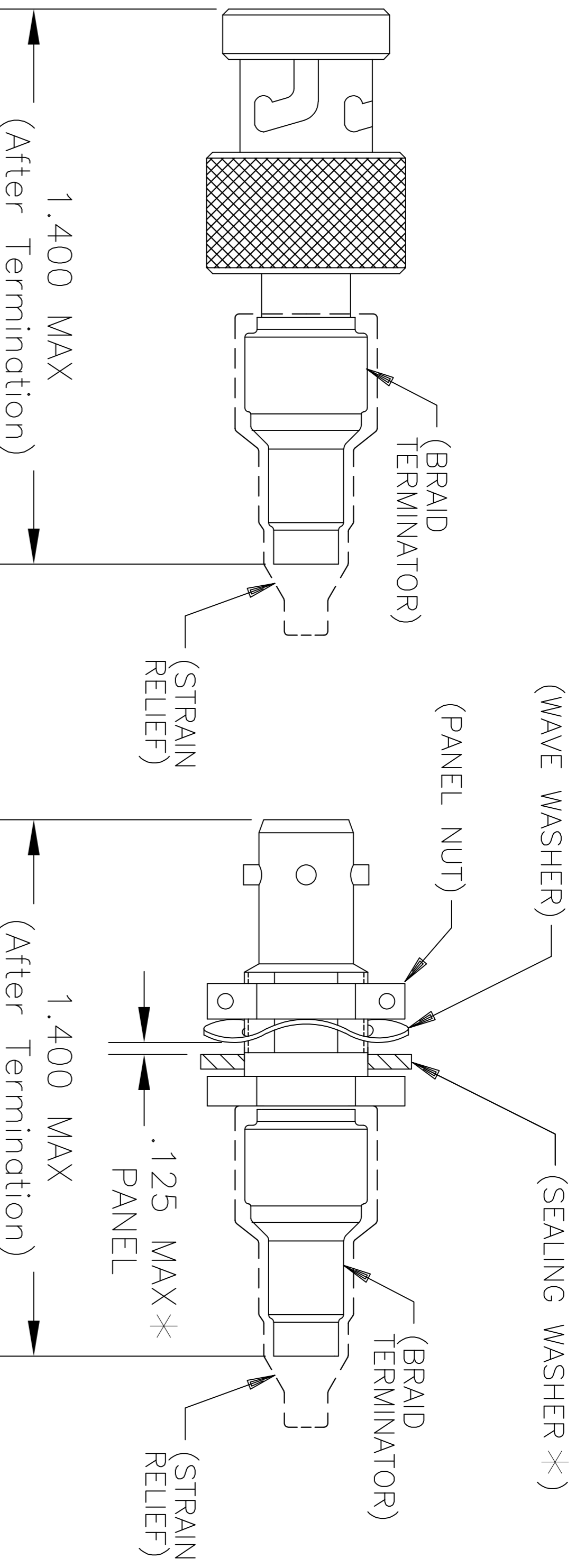
| | |
|----------|-----------------------|
| CAD NAME | DK621-X433-X440_CD_Ka |
|----------|-----------------------|

| | | |
|-------|---|---------------------|
| TITLE | KITS FOR DK-621-0433/0440 TRIAXIAL CONNECTORS | |
| SIZE | CODE IDENT. NO. | DWG. NO. |
| A | 06090 | DK-621-X433/X440-XX |

WEIGHT ---lbs [---g]



| | |
|---------------------------|--------------|
| DO NOT SCALE THIS DRAWING | SHEET 1 OF 2 |
|---------------------------|--------------|



PLUG CONNECTOR
ASSEMBLY

JACK CONNECTOR
ASSEMBLY

NOTES:

1.0 REFER TO THE FOLLOWING TE CONNECTIVITY CUSTOMER DRAWINGS (CD) FOR INDIVIDUAL COMPONENT DETAILS:

- | | |
|-----------------|--------------------------------------|
| D-621-0433/0440 | CONNECTOR, TRIAXIAL, BAYONET COUPLED |
| D-602-0126 | CONTACT, PIN, TWISTED PAIR |
| D-602-0127 | CONTACT, SOCKET, TWISTED PAIR |
| (D-600-0030) | BRAID TERMINATOR |
| (D-600-0019) | STRAIN RELIEF |
| (D-600-0053) | SEALING WASHER (JACK ONLY) |

* SEALING WASHER MAY BE INSTALLED IF THE PANEL THICKNESS IS LESS THAN 0.093 INCH.

2.0 CONNECTORS ARE QUALIFIED TO RAYCHEM SPECIFICATION D-6025.

3.0 TERMINATION PROCEDURE: RAYCHEM ES 61162.

IF THIS DOCUMENT IS PRINTED IT BECOMES UNCONTROLLED.
CHECK FOR THE LATEST REVISION.

| | | | | | |
|---|-----------------|----------------------------|--------------------|---------------------------------|-----------|
| CUSTOMER DRAWING | | STE TE Connectivity | | Raychem Databus | |
| DRAWN J.B.K. | DATE 91Apr03 | SIZE A | CAGE CODE 06090 | DWG. NO. DK-621-X433-X440-XX | REV K1 |
| 300 Constitution Drive Menlo Park, CA 94025 U.S.A. | | | SHEET 2 OF 2 | | |
| CAD FILE DK621-X433-X440_CD_Kb | | DO NOT SCALE THIS DRAWING | | | |