

4

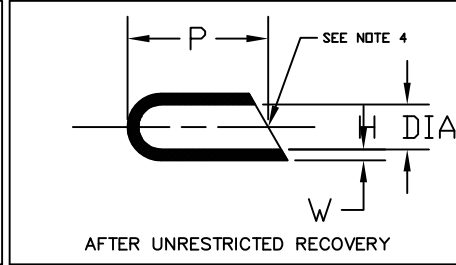
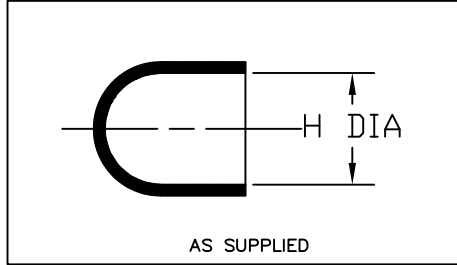
3

2

1

NOTES

- 1. All dimensions are in $\frac{\text{inches}}{\text{[millimeters]}}$
- 2. Dimensions appearing in table are as follows:
 - a - As Supplied
 - b - After Unrestricted Recovery
- 3. Coating is optional. As supplied dimensions appearing in table are for uncoated parts. When coating is added, entry diameters will be reduced by .06 max.
- 4. Recovered parts may have angularity of 30° - 45°.



| DIMENSIONING AND TOLERANCING PER ASME Y14.5M (ISO STANDARDS) | | |
|--|---------------------------|------------|
| REVISIONS | | |
| LTR | DESCRIPTION | DATE |
| U2 | RELEASE PER ECO-12-002474 | 02/07/2012 |

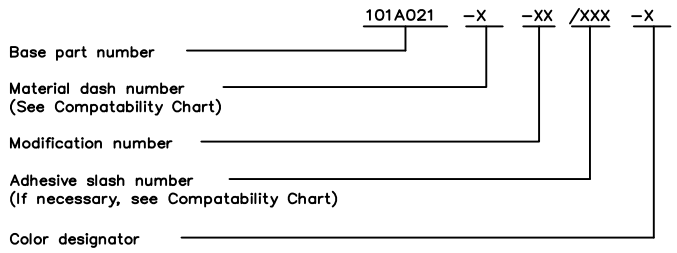
D

D

C

| PART NUMBER | H | | P | W |
|-------------|----------------|----------------|-----------------|---------------|
| | Min a | Max b | Min b | ±20% b |
| 101A011 | .20 [5,1] | .08 [2,0] | .90 [22,9] | .04 [1,02] |
| 101A021 | .29 [7,4] | .13 [3,3] | 1.00 [25,4] | .05 [1,27] |
| 101A031 | .40 [10,2] | .18 [4,6] | 1.20 [30,5] | .06 [1,52] |
| 101A041 | .60 [15,2] | .25 [6,4] | 1.60 [40,6] | .07 [1,78] |
| 101A052 | .81 [20,6] | .37 [9,4] | 2.40 [61,0] | .08 [2,03] |
| 101A062 | 1.00 [25,4] | .45 [11,4] | 2.70 [68,6] | .09 [2,29] |
| 101A073 | 1.55 [39,4] | .71 [18,0] | 3.60 [91,4] | .10 [2,54] |
| 101A083 | 2.00 [50,8] | .90 [22,9] | 4.00 [101,6] | .11 [2,79] |
| 101A094 | 3.30 [83,8] | 1.50 [38,1] | 4.50 [114,3] | .12 [3,05] |

ORDERING INFORMATION



* Color code based on SAE-AMS-DTL-23053
 * not all colors available for this molded part.

Raychem Molded Parts
CUSTOMER DRAWING

| | | | |
|--|---|---|--|
| THIS DRAWING AND THE INFORMATION SET FORTH HEREON ARE THE PROPERTY OF TYCO ELECTRONICS CORPORATION, AND ARE TO BE HELD IN TRUST AND CONFIDENCE. PUBLICATION, DUPLICATION, DISCLOSURE OR USE FOR ANY PURPOSE NOT EXPRESSLY AUTHORIZED IN WRITING BY TYCO ELECTRONICS CORPORATION IS PROHIBITED. | | | |
| UNLESS OTHERWISE SPECIFIED DIMENSIONS ARE METRIC AND INCHES ARE IN BRACKETS. DECIMAL TOLERANCES XXX ± 0.13 (.005) XX ± 0.25 (.01) X ± 0.50 (.10) ANGLE TOLERANCE .X ± 1 DEG. | DRAWN M. Mazariegos 01/31/12 | APPROVED D. Hurrell 02/01/12 | TE Connectivity Cap, Round End |
| | RPN | CAD FILE: 101A011thru094_CD | |
| TYCO ELECTRONICS RESERVES THE RIGHT TO AMEND THIS DRAWING AT ANY TIME. USERS SHOULD EVALUATE THE SUITABILITY OF THE PRODUCT FOR THEIR APPLICATION. | SIZE B | CODE IDENT. NO. 06090 | DWG. NO. 101A011thru094 |
| © 2012 Tyco Electronics Corporation. All rights reserved. | | DO NOT SCALE THIS DRAWING SHEET 1 OF 1 | |

| MATERIAL DASH NO. | MATERIAL DESCRIPTION | RT SPEC | ADHESIVE SLASH NO. | ADHESIVE S NUMBER |
|-------------------|----------------------------|---------|--------------------|-------------------|
| -3 | Polyolefin, Semi-rigid | RT-301 | /42; /86 | S-1017; S-1048 |
| -4 | Polyolefin, Flexible | RT-1304 | /42; /86 | S-1017; S-1048 |
| -12 | *VITON, Flexible | RT-1312 | N/A | N/A |
| -25 | Elastomer, Fluid Resistant | RT-1325 | /86; /225 | S-1048; S-1206 |
| -100 | Polyolefin, Semi-flexible | RT-1323 | | |

4 ZEROHAL™

3

2

1