

# Housing - HC-D 7-SML-26/M1PG11 - 1773284

Please be informed that the data shown in this PDF Document is generated from our Online Catalog. Please find the complete data in the user's documentation. Our General Terms of Use for Downloads are valid (<http://phoenixcontact.com/download>)



HEAVYCON D7 box mounting base, with single locking latch, height 25.5 mm, with 1 x Pg11 screw connection, with open bottom, zinc



## Key Commercial Data

Packing unit	10 STK
GTIN	
GTIN	4017918134389

## Technical data

### Dimensions

Height	25.5 mm
Width	40.5 mm
Length	24 mm
Wrench size, union nut	18 mm
External cable diameter	7.5 mm ... 12.5 mm

### Ambient conditions

Degree of protection of housing (IP)	IP54
	IP65 (with sealing screw)
Ambient temperature (operation)	-40 °C ... 125 °C

### General

Note	for contact inserts HC-A03, A04, D07, D08, Q02, Q03, Q04, Q05, Q07, Q12
Size	D7
Housing type	Box mounting bases
Locking type	with single locking latch
No. of cable outlets	1
Cable outlet	lateral

# Housing - HC-D 7-SML-26/M1PG11 - 1773284

## Technical data

### General

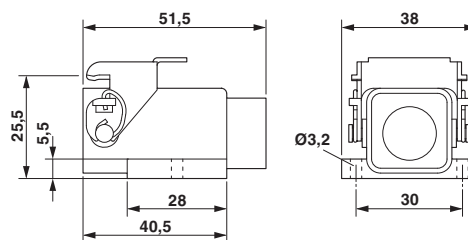
Screw connection	with
Type of the screw connection	1x Pg11
Housing material	Zinc die-cast
Housing surface material	Powder-coated, gray
Seal material	NBR
Cable gland material	Nickel-plated brass
Cable seal material	NBR
Material lock	Steel, galvanized

### Environmental Product Compliance

China RoHS	Environmentally friendly use period: unlimited = EFUP-e
	No hazardous substances above threshold values

## Drawings

Dimensional drawing



Dimensional drawing

Phoenix Contact 2018 © - all rights reserved  
<http://www.phoenixcontact.com>

PHOENIX CONTACT GmbH & Co. KG  
Flachsmarktstr. 8  
32825 Blomberg  
Germany  
Tel. +49 5235 300  
Fax +49 5235 3 41200  
<http://www.phoenixcontact.com>