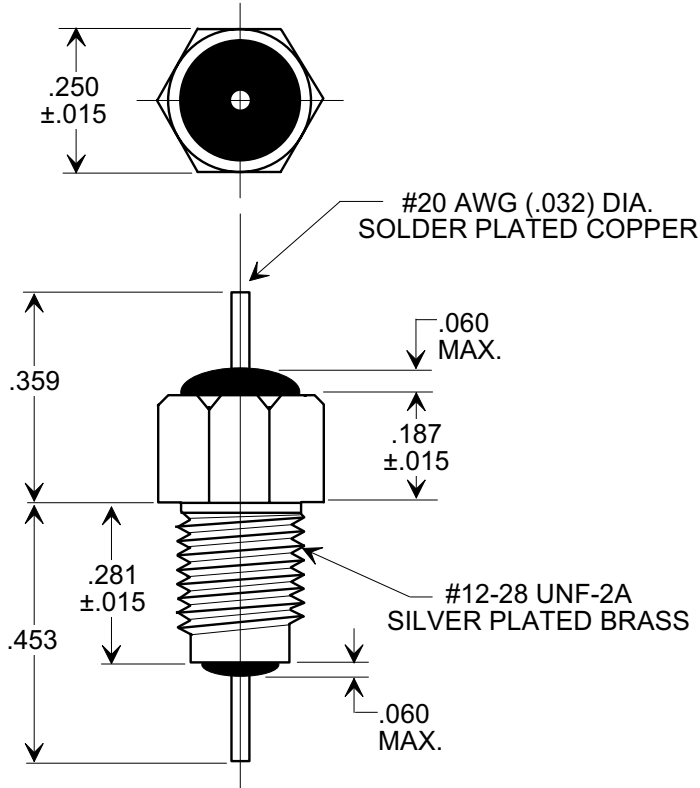
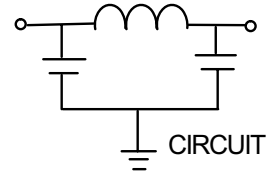


**MARKETING SALES DRAWING**  
**DIMENSIONS IN INCHES - DO NOT SCALE THIS DRAWING**

Electrical Testing  
per Tusonix standard  
test plans and Mil-Std-202  
Test Methods.



NOTE:  
HEX NUT AND INTERNAL TOOTH  
LOCK WASHER SUPPLIED.

1500	350	200	10	5	45	70	70
	85°C	125 °C		10	100	1	10
MIN. CAP. (pF)	WORKING VOLTAGE (WVdc)		CURRENT IDC	MINIMUM NO LOAD INSERTION LOSS (dB) AT 25°C PER MIL-STD -220			
				MHz	MHz	GHz	GHz

<b>REVISION RECORD</b> Original Release C.O. 19991123-1-01 0	TOLERANCES unless otherwise specified		Title	
	2 PLC. DECIMAL ± N/A		<b>BUSHING STYLE EMI FILTER</b>	
	3 PLC. DECIMAL ± .031			
	ANGLES ± N/A		Drawn S.M. 11-24-99	Scale 3 X
<b>TUSONIX</b> TUCSON, ARIZONA		Approved T.C. 11-24-99		
		<b>A</b>	<b>4204-004</b>	

X-2015 Rev-0