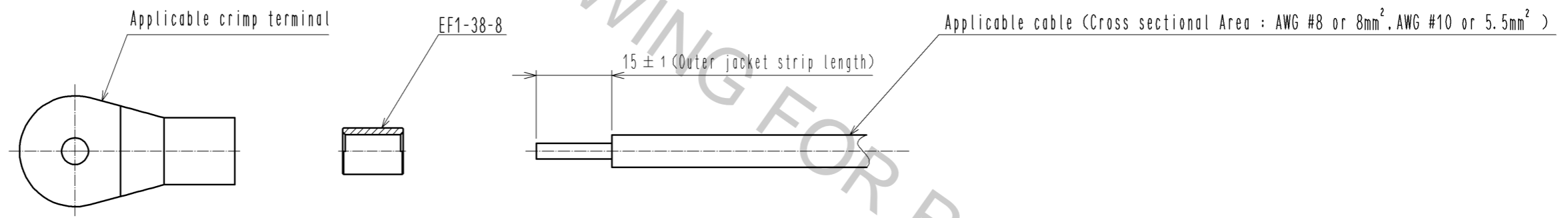
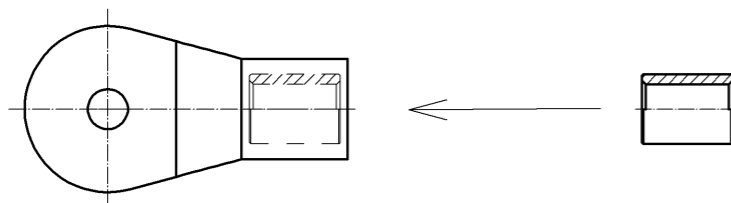


- NOTES
- 1 This sleeve is used for crimping 8 mm² or 5.5 mm² size cable to 38 mm² size crimp terminals.
 - 2 Applicable crimp terminal for this product is packaged terminal of EF1-38R*-1SC* or EF1-38P*-1PC*.
 - 3 Recommended crimping tool:
REC 150F(JIS C 9711) manufactured by IZUMI product company.
 - 4 One bag includes 100pcs of products.

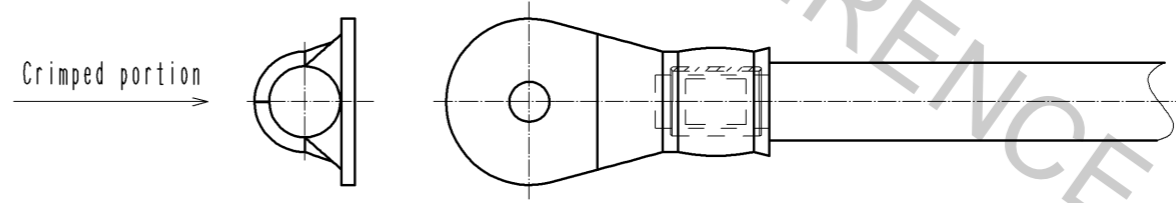
☐ Instructions for the cable assembly(1:1)



(1) Insert EF1-38-8 into the applicable crimp terminal.

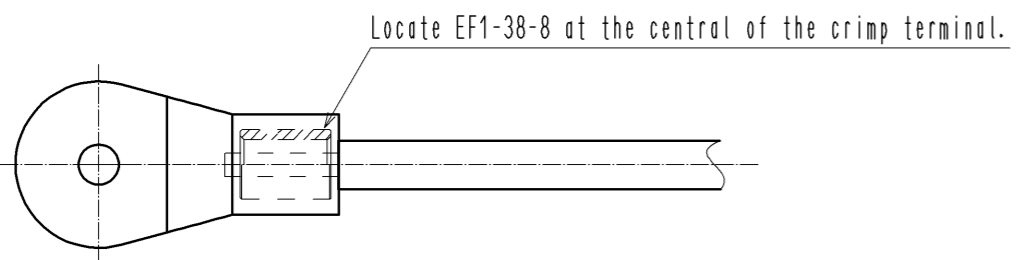


(3) Crimp the contact with the recommended crimping tool at size 38 position.



Avoid the deformation especially to the shape described with two-dot chain line.

(2) Insert the applicable cable into the applicable crimp terminal.



1	Copper alloy	Tin plating						
NO.	MATERIAL	FINISH	REMARKS					
UNITS mm			SCALE 5 : 1	COUNT 2	DESCRIPTION OF REVISIONS DIS-C-003077	DESIGNED HS. KAWASHIMA	CHECKED SU. OBARA	DATE 13. 06. 03
HRS HIROSE ELECTRIC CO., LTD.			APPROVED : SU. OBARA	13. 02. 22	DRAWING NO. EDC3-118016-00			
			CHECKED : YH. YAMADA	13. 02. 22	PART NO. EF1-38-8			
			DESIGNED : HS. KAWASHIMA	13. 02. 22	CODE NO. CL142-0007-0-00			
			DRAWN : KN. IKEHARA	13. 02. 22	1/1			