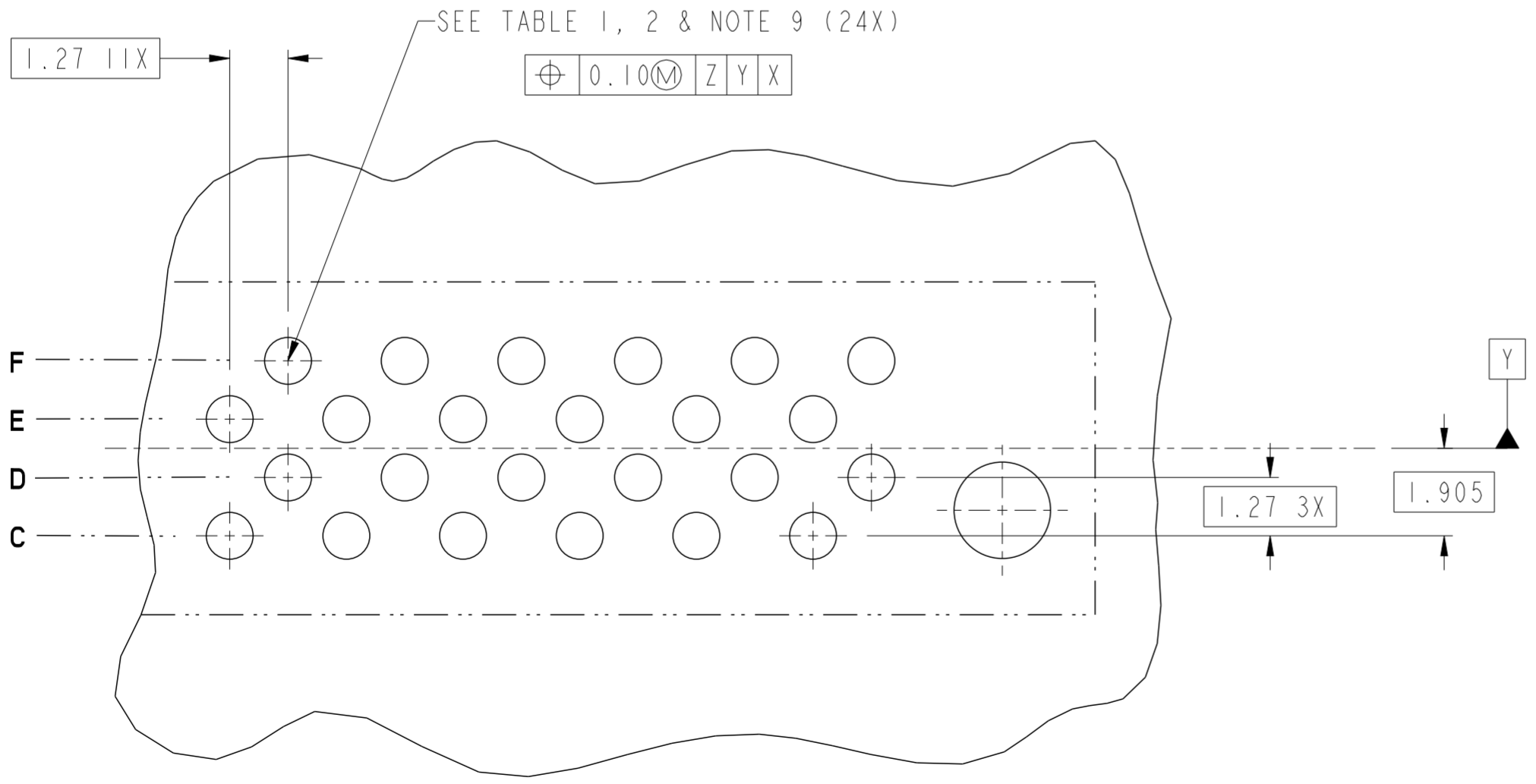
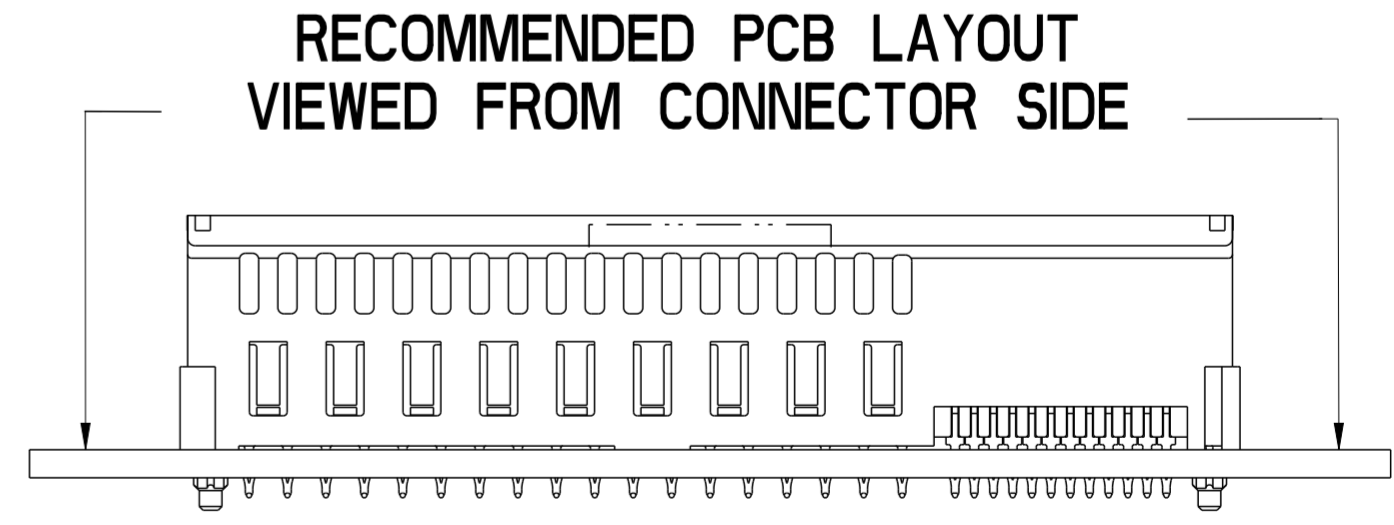
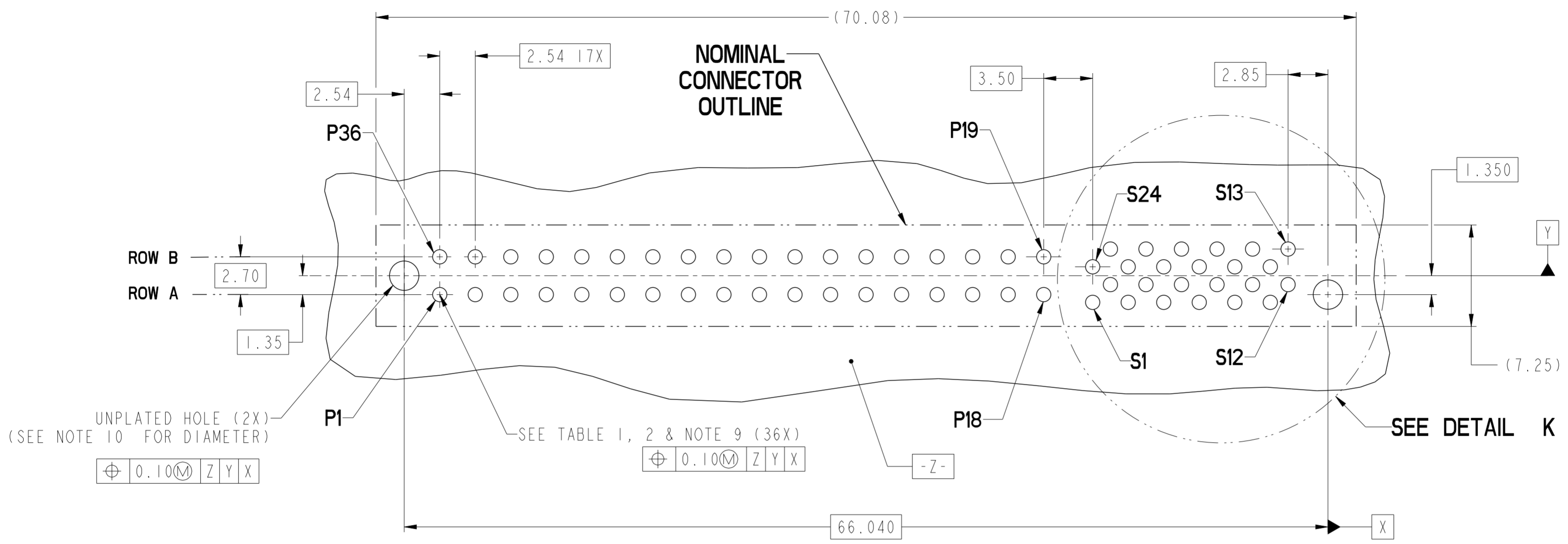


SECTION C-C

SECTION D-D

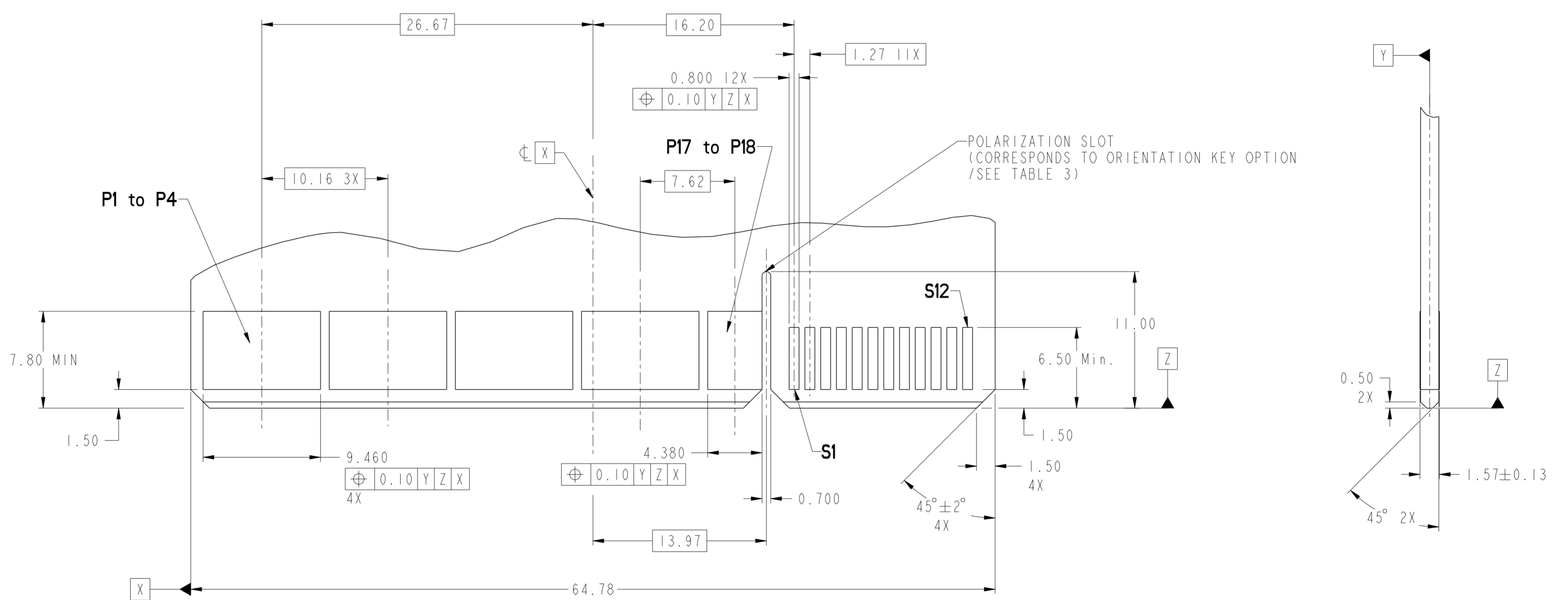
rev		ecn no	dr	date	spec ref	dr	Wei-Long Zhang	2012/01/05	projection	MM	size	A2	scale	4:1
1	-	HT	2012-01-05		tolerance std	eng	Wei-Long Zhang	2012/03/05			ecn no	-	rel level	Released
-	-	-	-	ASME Y14.5	TOLERANCES UNLESS OTHERWISE SPECIFIED	chr	-							
-	-	-	-	-	surface	appr	Pei-Ming Zheng	2012/03/05	product family	CARD EDGE	rel level	Released	rev	A
-	-	-	-	-	ASME Y14.5	linear	0.X	±0.3			cat. no.	-	Product - Customer Drw	sheet 1 of 4
-	-	-	-	-	angular	0°	±2°	<b>VERT RECT (36P 24S)</b> <b>HIGH POWER CARD EDGE</b>		cat. no.	-	Product - Customer Drw	sheet 1 of 4	



dr	Wei-Long Zhang	2012/01/05	projection	MM	size	A2	scale	4:1	
eng	Wei-Long Zhang	2012/03/05		MM	ecn no	-	rel level	Released	
chr	-	-							
appr	Pai-Ming Zheng	2012/03/05	product family	CARD EDGE	rel level	Released			
			title	VERT RECT (36P 24S) HIGH POWER CARD EDGE		dwg no	10119884	rev	A
www.fci.com			cat. no.	-	Product - Customer Drw	sheet 2 of 4			

CONTACT TYPE	TOP LAYER DESCRIPTION	TABLE 1 (HPCE / SOLDER TAILS) PLATED THROUGH-HOLE REQUIREMENTS				
		DRILLED HOLE DIAMETER	COPPER THICKNESS	TIN-LEAD THICKNESS	TIN THICKNESS	FINISHED HOLE DIAMETER
POWER & SIGNAL	TIN-LEAD	1.10-1.16 (1.15 DRILL)	0.025 - 0.050	0.005 - 0.015	--	0.94 - 1.10
	IMMERSION TIN	1.10-1.16 (1.15 DRILL)	0.025 - 0.050	--	0.9 - 1.5um	0.94 - 1.10
	COPPER (SEE NOTE 8)	1.10-1.16 (1.15 DRILL)	0.025 - 0.050	--	--	0.94 - 1.10

CONTACT TYPE	TOP LAYER DESCRIPTION	TABLE 2 (HPCE / PRESS-FIT TAILS) PLATED THROUGH-HOLE REQUIREMENTS				
		DRILLED HOLE DIAMETER	COPPER THICKNESS	TIN-LEAD THICKNESS	TIN THICKNESS	FINISHED HOLE DIAMETER
POWER & SIGNAL	TIN-LEAD	0.81-0.86 (0.85 DRILL)	0.025 - 0.050	0.005 - 0.015	--	0.65 - 0.80
	IMMERSION TIN	0.81-0.86 (0.85 DRILL)	0.025 - 0.050	--	0.9 - 1.5um	0.70 - 0.80
	COPPER (SEE NOTE 8)	0.81-0.86 (0.85 DRILL)	0.025 - 0.050	--	--	0.70 - 0.80

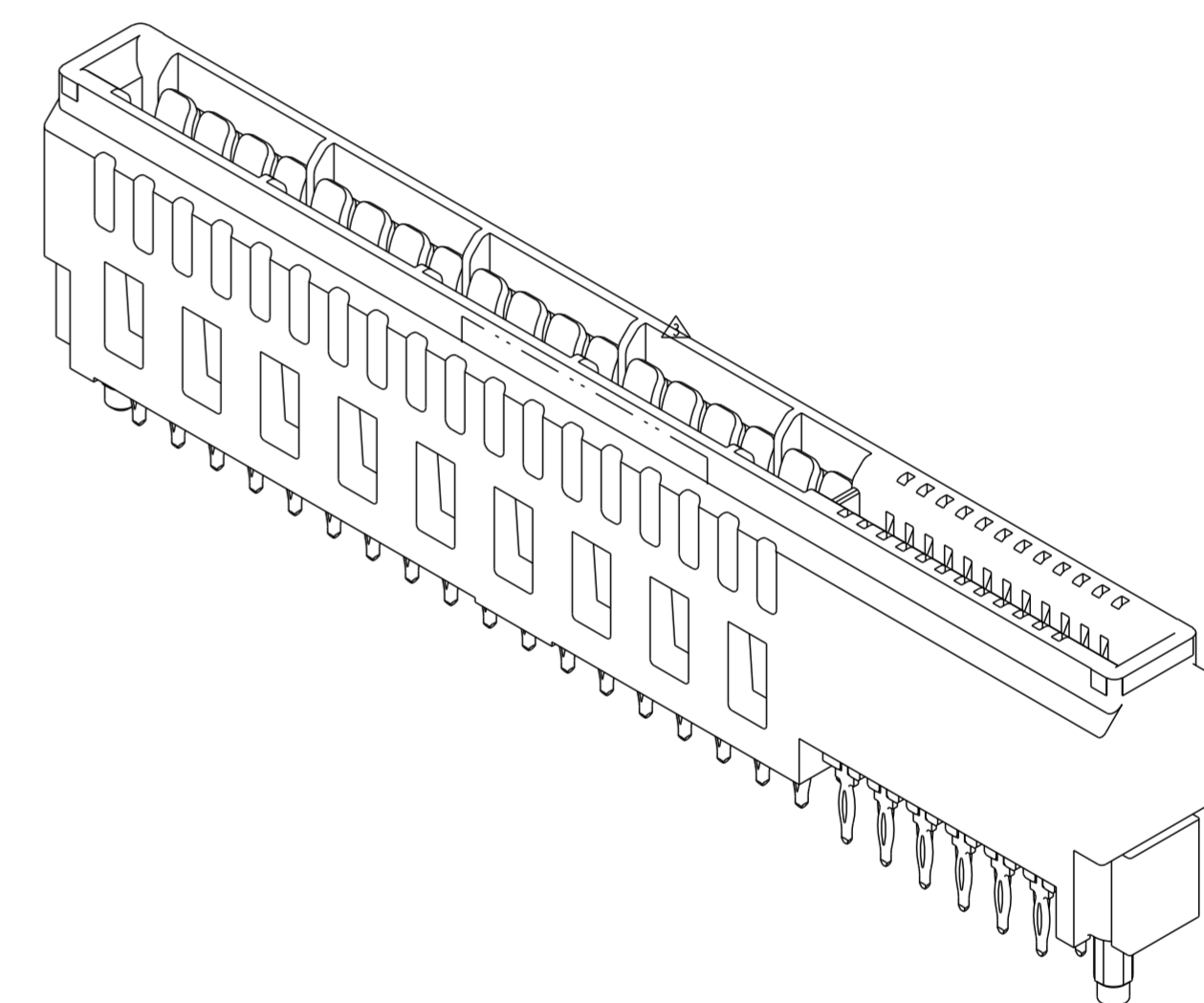


**RECOMMENDED MATING BOARD FOOTPRINT**

dr	Wei-Long Zhang	2012/01/05	projection	MM	size	A2	scale	4:1
eng	Wei-Long Zhang	2012/03/05		MM	ecn no	-	rel level	Released
chr	-	-						
appr	Pei-Ming Zheng	2012/03/05	product family	CARD EDGE	rel level	Released		
			<b>VERT RECT (36P 24S)</b> HIGH POWER CARD EDGE			dwg no 10119884	rev A	
www.fci.com			cat. no.	-	Product - Customer Drw	sheet 3 of 4		

HPCE PART NUMBER (TABLE 3)

PART NUMBER	TAIL TYPE	ORIENTATION KEY	DIM "A" TYPICAL TAIL LENGTH	DIM "B" RECOMMENDED BOARD THICKNESS	SPECIFIED APPLICATION TOOL
10119884-001LF	SOLDER	YES	3.17 ±0.25	1.59 - 2.38	NO
10119884-002LF	SOLDER	NO			
10119884-003	PRESS-FIT	YES	3.17 ±0.25	1.57 MIN	YES NOTE 11
10119884-003LF	PRESS-FIT	YES			
10119884-004	PRESS-FIT	NO			
10119884-004LF	PRESS-FIT	NO			



NOTES:

1. CONNECTOR MATERIALS:

HOUSING: HIGH TEMPERATURE THERMAL PLASTIC, BLACK  
UL 94V-0 COMPLIANT  
CONTACTS: HIGH PERFORMANCE COPPER ALLOY.

2. CONTACT FINISH REF. GS-12-604 SECTION 5.2.

3. PRODUCT SPECIFICATION: GS-12-604.

4. APPLICATION SPECIFICATION: GS-20-128.

5. PRODUCT MARKING (FCI - PART NUMBER & DATE CODE) ON HOUSING IN AREA SHOWN.

6. PACKAGING MEETS FCI SPECIFICATION GS-14-937.

7. HOUSING COMPONENT WILL WITHSTAND EXPOSURE TO 260°C PEAK TEMPERATURE FOR 60 SECONDS IN A CONVECTION, INFRA-RED, OR VAPOR PHASE REFLOW OVEN.

8. COPPER PLATING THICKNESS IN CENTER OF VIA-HOLE CAN BE NO MORE THAN 0.003 LESS THAN OTHER AREAS.

9. ALL HOLE SIZES ARE FINISHED HOLE SIZES.

10. MOUNTING HOLES ARE UNPLATED  
 Ø 2.40 +/- 0.10 FOR PRESS-FIT TAILS  
 Ø 2.25 +/- 0.05 FOR SOLDER TAILS

11. APPLICATION TOOL DRAWING: 10119453.

dr	Wei-Long Zhang	2012/01/05	projection	MM	size	A2	scale	4:1
eng	Wei-Long Zhang	2012/03/05			ecn no	-		
chr	-	-			product family	CARD EDGE	rel level	Released
appr	Pai-Ming Zheng	2012/03/05			cat. no.	10119884	rev	A
www.fci.com			Product - Customer Drw			sheet 4 of 4		