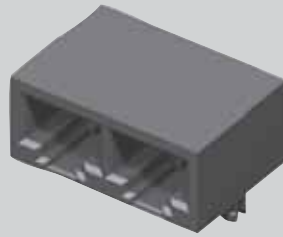
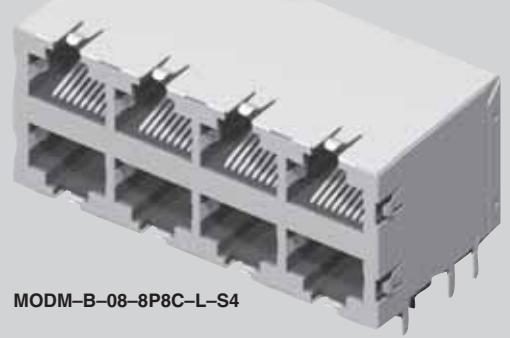




MODM-A-02-8P8C-G



MODM-B-08-8P8C-L-S4



MODM-A, MODM-B SERIES

GANGED IN-LINE/STACKED MODULAR JACKS

SPECIFICATIONS

For complete specifications and recommended PCB layouts see www.samtec.com?MODM-A

Insulator Material: PBT Glass Filled
Contact Material: Phosphor Bronze
Shield Material: Copper Alloy
Plating: Gold on Contacts, Nickel on Shield, Gold on Tails
Operating Temp Range: -25°C to +90°C
Current Rating: 2 A per Contact
Voltage Rating: 120 VAC
Contact Resistance: 20 mΩ max
Minimum Cycles: 500
System Applications: CAT3
Packaging: Packaged and shipped in Bulk Packaging Trays; Trays suitable for automation are available upon request.
RoHS Compliant: Yes
Lead-Free Solderable: Yes (Wave Solder only)



MODM - A - NO. OF PORTS - POSITIONS CONTACTS - PLATING - SHIELD OPTION

-02 thru -06, -08, -10

-8P8C = 8 Positions 8 Contacts per port

-G = 15μ" (0,38μm) Gold on Mating Area, Gold Flash on Tails

-E = 50μ" (1,27μm) Gold on Mating Area, Gold Flash on Tails

-S = Shielded (No Panel Grounds) (-03 and -10 Not Available)

-S4 = Shielded with Top, Bottom and Side Panel Grounds (Requires -02, -04 or -08 ports)

APPLICATION SPECIFIC OPTION
Other plating options available. Call Samtec.

NO. OF PORTS	A Unshielded	A Shielded
-02	(30,46) 1.199	(31,00) 1.220
-03	(44,43) 1.749	N/A
-04	(58,40) 2.299	(58,94) 2.320
-05	(72,37) 2.849	(72,91) 2.870
-06	(86,34) 3.399	(86,88) 3.420
-08	(114,28) 4.499	(114,90) 4.524
-10	(128,28) 5.050	N/A

SPECIFICATIONS

For complete specifications and recommended PCB layouts see www.samtec.com?MODM-B

Insulator Material: PBT Glass Filled
Contact Material: Phosphor Bronze
Shield Material: Copper Alloy
Plating: Gold on Contacts, Nickel on Shield, Gold on Tails
Operating Temp Range: -25°C to +90°C
Current Rating: 1.5 A per contact
Voltage Rating: 120 VAC max
Contact Resistance: 20 mΩ max
Minimum Cycles: 500
System Applications: CAT3
Packaging: Packaged and shipped in Bulk Packaging Trays; Trays suitable for automation are available upon request.
RoHS Compliant: Yes
Lead-Free Solderable: Yes (Wave Solder only)



MODM - B - NO. OF PORTS - POSITIONS CONTACTS - PLATING - OPTIONS

-02, -04, -06, -08, -12, -16

-8P8C = 8 Positions 8 Contacts per port

-L = 15μ" (0,38 μm) Gold on Mating Area, Gold Flash on Tails

-U = 50μ" (1,27μm) Gold on Mating Area, Gold Flash on Tails

-S4 = Shielded with Top, Bottom and Side Panel Grounds (-02 port does not have panel grounds)

APPLICATION SPECIFIC OPTION
Other plating options available. Call Samtec.

NO. OF PORTS	A Unshielded	A Shielded
-02	(16,50) .650	(17,25) 0.679
-04	(30,50) 1.200	(31,25) 1.230
-06	(44,50) 1.752	(45,25) 1.781
-08	(58,50) 2.303	(59,25) 2.333
-12	(86,50) 3.406	(87,25) 3.435
-16	(114,50) 4.508	(115,25) 4.537

Due to technical progress, all designs, specifications and components are subject to change without notice.