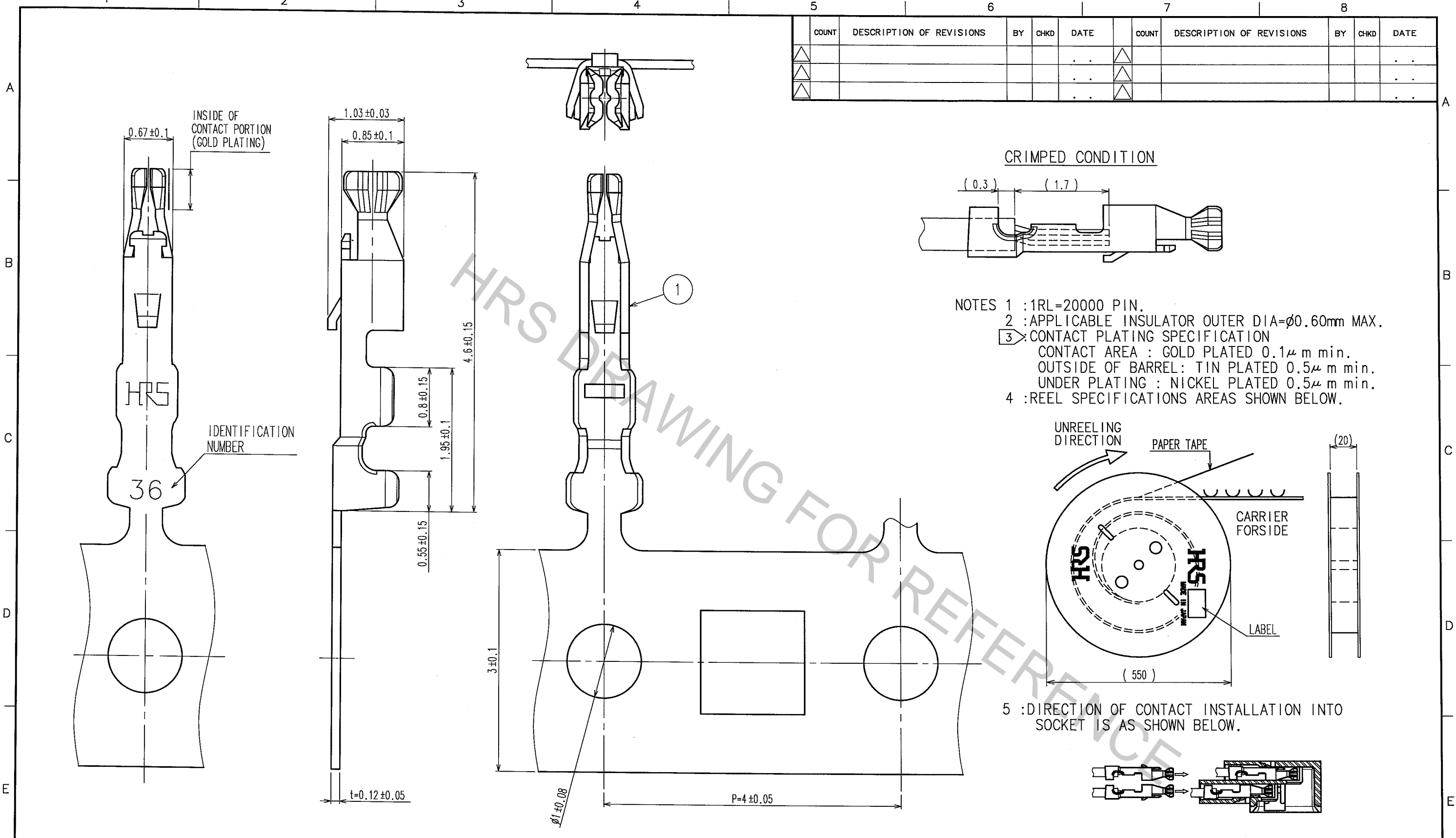
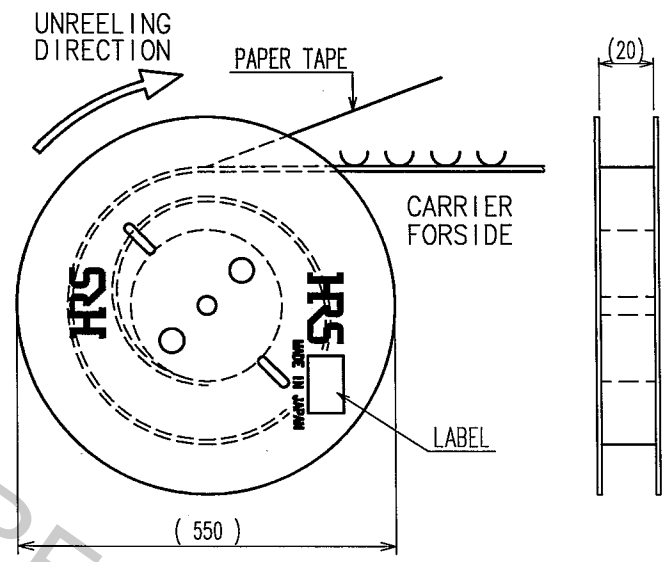


Apr.1.2017 Copyright 2017 HIROSE ELECTRIC CO., LTD. All Rights Reserved.

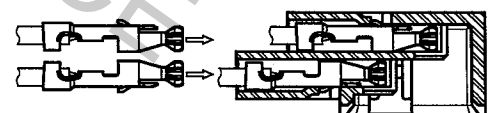
5					6					7					8				
COUNT	DESCRIPTION OF REVISIONS				BY	CHKD	DATE	COUNT	DESCRIPTION OF REVISIONS				BY	CHKD	DATE				
△							..	△							..				
△							..	△							..				
△							..	△							..				



NOTES 1 : 1RL=20000 PIN.
 2 : APPLICABLE INSULATOR OUTER DIA= $\phi 0.60$ mm MAX.
 3 : CONTACT PLATING SPECIFICATION
 CONTACT AREA : GOLD PLATED $0.1 \mu\text{m}$ min.
 OUTSIDE OF BARREL : TIN PLATED $0.5 \mu\text{m}$ min.
 UNDER PLATING : NICKEL PLATED $0.5 \mu\text{m}$ min.
 4 : REEL SPECIFICATIONS AREAS SHOWN BELOW.



5 : DIRECTION OF CONTACT INSTALLATION INTO SOCKET IS AS SHOWN BELOW.



NO.	MATERIAL	FINISH, REMARKS	NO.	MATERIAL	FINISH, REMARKS
			1	PHOSPHOR BRONZE	3
CODE NO. (OLD)			DRAWN	DESIGNED	CHECKED
			F.Matsuki	T.Kumagawa	H.Umehara
			'05.08.31	'05.08.31	'05.09.01
			APPROVED	RELEASED	
			T. Ona		
					..
DRAWING NO.			PART NO.		
EDC3-303434-01			DF24-36SCFA		
SCALE			CODE NO.		
20 : 1			CL687-3003-7		
UNITS			1/1		
mm					

TO