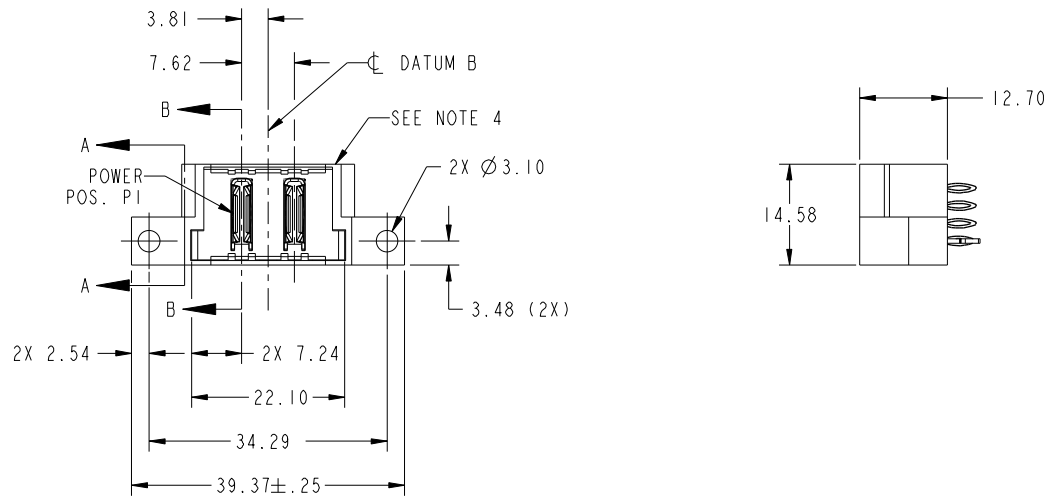


Tous droits strictement reserves. Reproduction ou communication a des tiers interdite sous quelque forme que ce soit sans autorisation écrite du propriétaire. Propriete de c FCI. Droits de reproduction FCI.

All rights strictly reserved. Reproduction or issue to third parties in any form whatever is not permitted without written authority from the proprietor. Property of FCI. Copyright FCI.



PRODUCT NO. 51963-046-- NOTE: 3	POWER			
	E1	P1	P2	E2



CODE	DIM "M" MATING LENGTH	CONTACT TYPE
PC	[N/A]	POWER
HA	[N/A]	HOLD-DOWN

mat'l code				SEE NOTES		tolerances unless otherwise specified		CUSTOMER		FCI	
ltr	ecn no.	dr	date	linear	0.X ±0.5	projection		COPY		www.fciconnect.com	
A	DG09-0386	WD	12/13/09	angles	0.XX ±0.25	MIM		title		2ACP	
				dr	0.XXX ±0.10	scale		product family		PwrBlade	
				enr	0° ±2°	1:1		size		code	
				chr	WARREN DU 11/28/09			dwg no		213	
				appd	WARREN DU 11/28/09			51963-046		sheet	
					PM ZHENG 11/28/09			A		1 of 4	
					JOSEPH HSIA 11/28/09						
sheet index	revision sheet	A	A	A	A						
		1	2	3	4						

cage code 22526

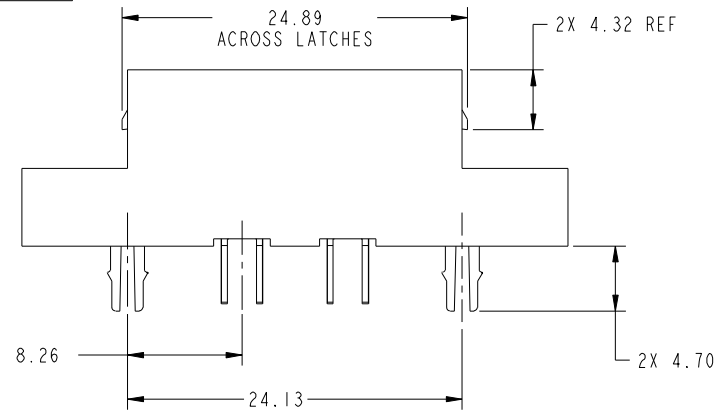
Pro/E

Tous droits strictement reserves. Reproduction ou communication a des tiers interdite sous quelque forme que ce soit sans autorisation écrite du propriétaire. Propriete de c FCI. Droits de reproduction FCI.

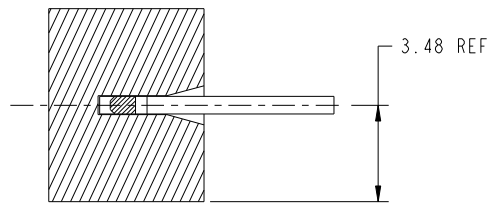


All rights strictly reserved. Reproduction or issue to third parties in any form whatever is not permitted without written authority from the proprietor. Property of FCI. Copyright FCI.

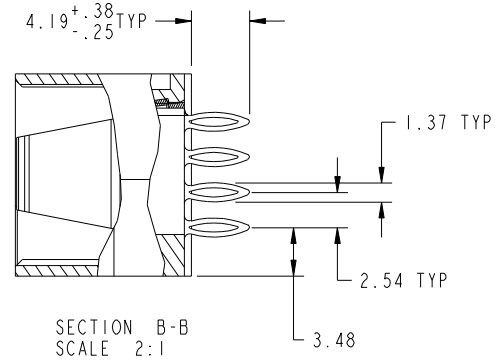
PRODUCT NUMBER
51963-046--
NOTE: 3



SCALE 2:1



SECTION A-A
SCALE 4:1



SECTION B-B
SCALE 2:1

mat'l code		SEE NOTES		tolerances unless otherwise specified		CUSTOMER		 www.fciconnect.com	
ltr	ecn no.	dr	date	linear	0.X ± 0.5	COPY		title	
A					0.XX ± 0.25	projection		2ACP	
				angles	0.XXX ± 0.10			VERTICAL PRESS FIT HEADER	
				dr	0° ± 2°	MIM		product family	PwrBlade
				enr	WARREN DU 11/28/09	scale		size	code
				chr	WARREN DU 11/28/09	1:1		dwg no	213
				appd	PM ZHENG 11/28/09			A	sheet
					JOSEPH HSIA 11/28/09				
sheet index	revision sheet								

cage code 22526

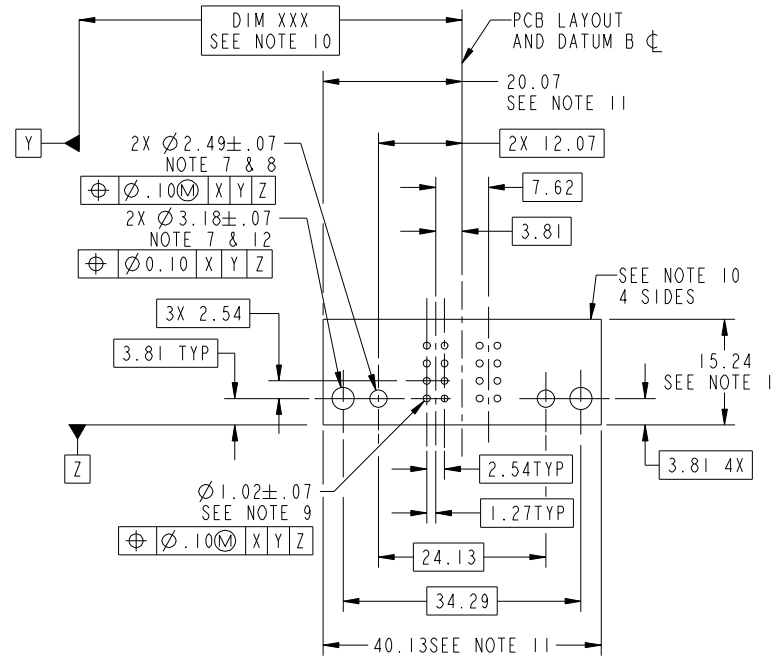
Pro/E

Tous droits strictement reserves. Reproduction ou communication a des tiers interdite sous quelque forme que ce soit sans autorisation écrite du propriétaire. Propriete de c FCI. Droits de reproduction FCI.



All rights strictly reserved. Reproduction or issue to third parties in any form whatever is not permitted without written authority from the proprietor. Property of FCI. Copyright FCI.

PRODUCT NUMBER
51963-046--
NOTE: 3



mat'l code		SEE NOTES		tolerances unless otherwise specified		CUSTOMER		FCI	
ltr	ecn no.	dr	date	linear	0.X ± 0.5	COPY		www.fciconnect.com	
A				linear	0.XX ± 0.25	projection	title 2ACP VERTICAL PRESS FIT HEADER		
				angles	0.XXX ± 0.10			product family PwrBlade code 213	
		dr	WARREN DU	11/28/09	0° ± 2°	MIM		size	sheet 3
		enr	WARREN DU	11/28/09				dwg no	213
		chr	PM ZHENG	11/28/09		scale	A 51963-046		sheet 3
		appd	JOSEPH HSIA	11/28/09		1:1			
sheet index	revision sheet								

cage code 22526

Pro/E

Tous droits strictement reserves. Reproduction ou communication a des tiers interdite sous quelque forme que ce soit sans autorisation écrite du propriétaire. Propriete de c FCI. Droits de reproduction FCI.



All rights strictly reserved. Reproduction or issue to third parties in any form whatever is not permitted without written authority from the proprietor. Property of FCI. Copyright FCI.

A

B

1 | 2

3 |

4

PRODUCT NUMBER
51963-046-- NOTE: 3

NOTES:

1. DIMENSIONS AND TOLERANCES ARE IN ACCORDANCE WITH ASME Y14.5M, 1994 UNLESS OTHERWISE SPECIFIED.

CONNECTOR NOTES:

2 HOUSING MATERIAL: UL 94 V-0 GLASS FILLED HIGH-TEMP THERMOPLASTIC
POWER CONTACT MATERIAL: COPPER ALLOY
SIGNAL PIN MATERIAL: COPPER ALLOY

3. PLATING:
SEE ITEM 3 & 4 IN PRINT 10064183 FOR PLATING SPEC OF 51963-046; 51963-046LF RESPECTIVELY

4 MANUFACTURER'S NAME, P/N, AND DATE CODE TO APPEAR ON THIS SURFACE.

5. PRODUCT SPECIFICATION GS-12-149.
APPLICATION SPECIFICATION BUS-20-067.

6. PACKAGED IN TRAYS.

PCB NOTES:

7. ALL HOLE DIAMETERS ARE FINISHED HOLE SIZE.
8. MOUNTING HOLES, WHERE APPLICABLE, ARE UNPLATED.

9 $\varnothing 1.151 \pm 0.025$ DRILLED HOLES PLATED WITH
0.008 MIN SnPb OR Sn OVER 0.03
TO 0.08 Cu PLATING TO ACHIEVE
 $\varnothing 1.02 \pm .07$ HOLE.

10 "DIM XXX" TO BE DETERMINED BY THE CUSTOMER.

11 CONNECTOR KEEP-OUT ZONE.

12. FOR PRESS FIT APPLICATION USE FCI CAM TOOL 430169-018.1

13. CUSTOMER SUPPLIES (2) #4-40 UNC SCREWS, HARDWARE TO MOUNT HEADER TO PC BOARD.

mat'l code		SEE NOTES		tolerances unless otherwise specified		CUSTOMER		www.fciconnect.com	
ltr	ecr no.	dr	date	linear	0.X ± 0.5	COPY		title	
A					0.XX ± 0.25	projection		2ACP	
				angles	0.XXX ± 0.10			VERTICAL PRESS FIT HEADER	
				dr	0° ± 2°			product family PwrBlade code	
				enr	WARREN DU 11/28/09	scale		size	
				chr	WARREN DU 11/28/09	1:1		dwg no	
				appd	PM ZHENG 11/28/09	A		51963-046	
					JOSEPH HSIA 11/28/09			sheet	
sheet index	revision sheet							4	

A

B

1 | 2

Pro/E

3 |

cage code 22526

4