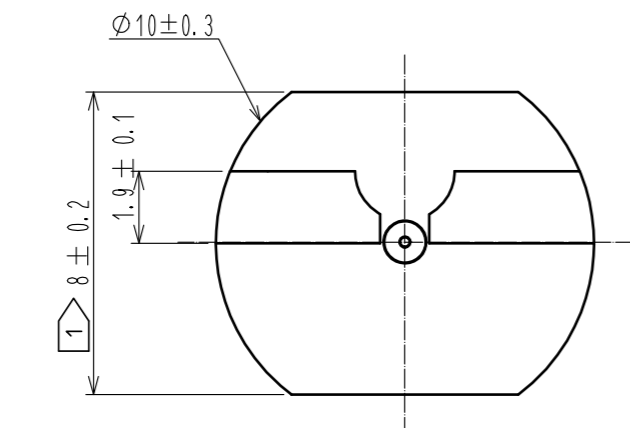
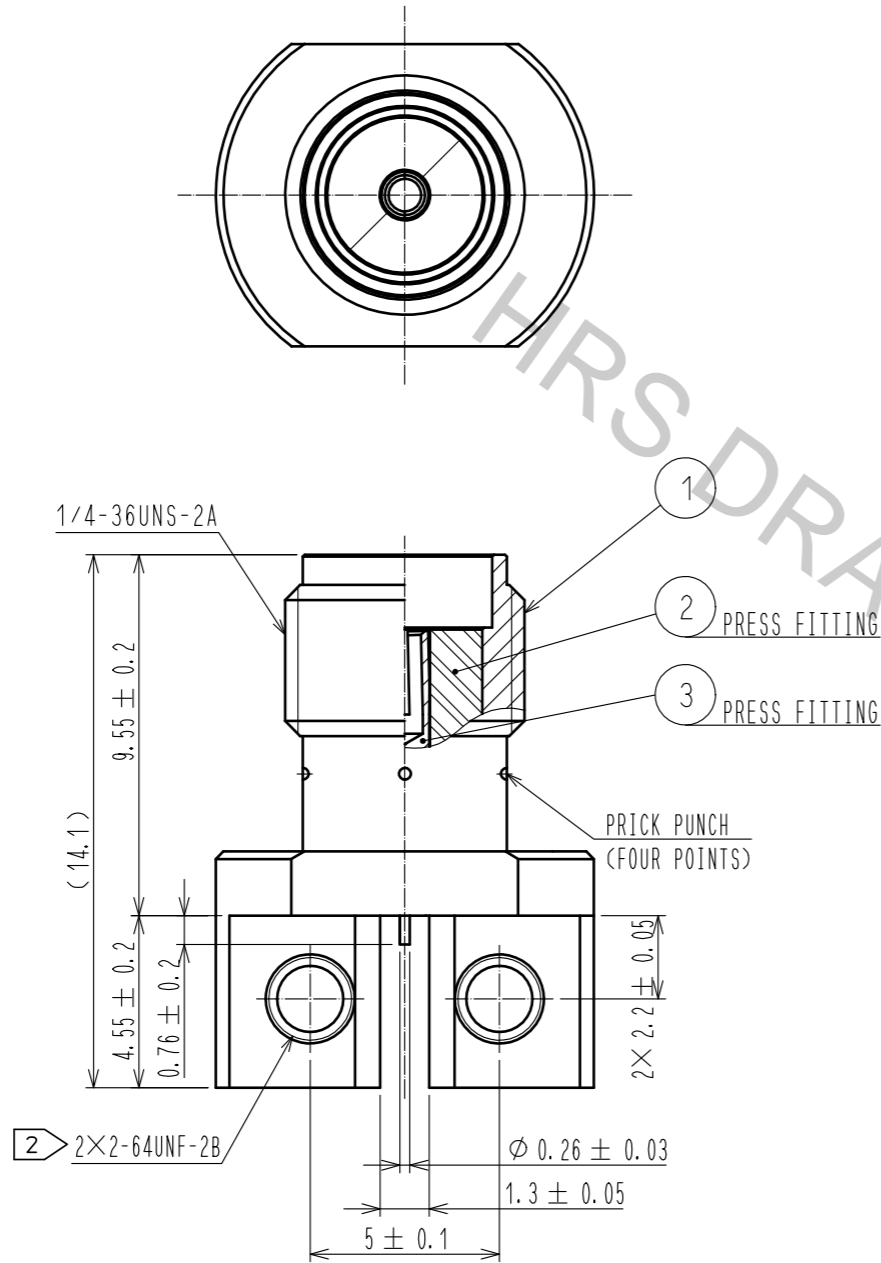


Unified screw thread type

NOTES ① WHEN THE MATING CONNECTOR, PLEASE HOLD MILLING AREA OF  $8 \pm 0.2$  WITH A WRENCH.

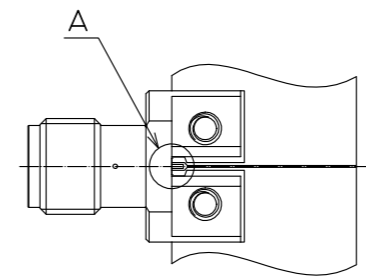
② 2-64UNF-2B SCREW TIGHTENING TORQUE IS  $0.23 \text{ N} \cdot \text{m}$

③ PLEASE USE A PCB MOUNTING SCREW OF THE LENGTH OF  $L(\text{mm})$ .  
 THE LENGTH OF  $L(\text{mm})$  IS PCB THICKNESS  $t_1(\text{mm})$  + SPRING WASHER THICKNESS  $t_2(\text{mm})$  +  $2(\text{mm})$ .  
 PLEASE USE A SCREW WITH SPRING WASHER.

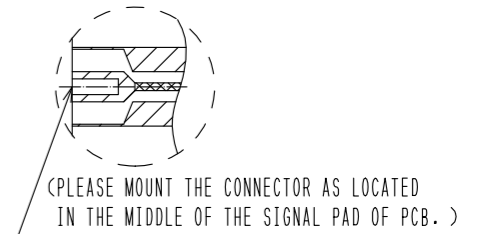


MOUNTING OF CONNECTOR

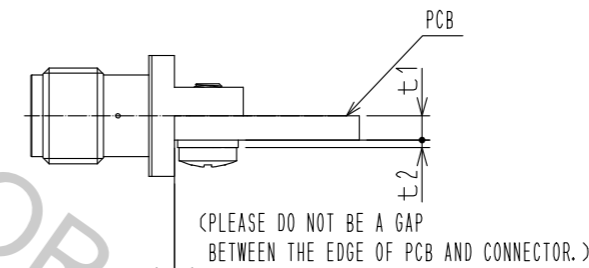
- (1) WHEN THE CONNECTOR IS MOUNTED ON PCB, PLEASE DO NOT BE A GAP BETWEEN THE EDGE OF PCB AND CONNECTOR.
- (2) PLEASE MOUNT THE CONNECTOR AS LOCATED IN THE MIDDLE OF THE SIGNAL PAD OF PCB.
- (3) SOLDERING CONDITIONS:  
 FOR THE MANUAL SOLDERING, SOLDERING IRON BIT TEMPERATURE IS  $380^\circ \text{C}$  MAX. FOR 5 SECONDS MAX.



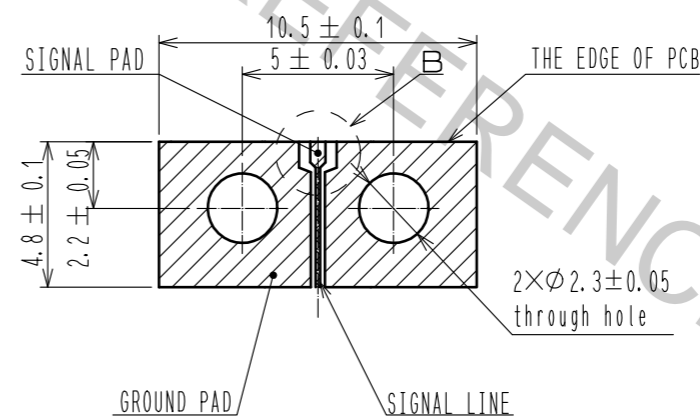
A(10:1)



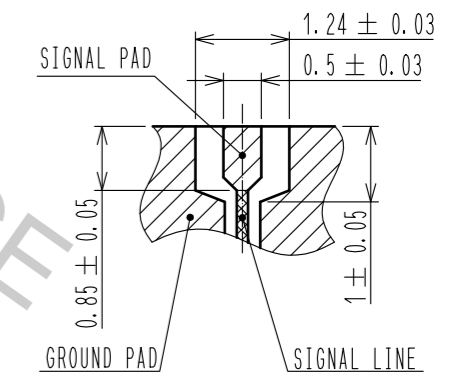
③ 2-64UNF-2A SCREW OUTSIDE DRAWING



RECOMMENDED PC BOARD PATTERN DRAWING(4:1)



B(10:1)



PLEASE DESIGN THE SIGNAL PAD AND SIGNAL LINE WITH  $50 \Omega$ .  
 REGIST FOR SIGNAL PAD AND GROUND PAD IS PROHIBITED.

RoHS COMPLIANT

2	PTFE						
1	BRASS	GOLD PLATING		3	BERYLLIUM COPPER	GOLD PLATING	
NO.	MATERIAL	FINISH	REMARKS	NO.	MATERIAL	FINISH	REMARKS
UNITS	mm	SCALE	5:1	COUNT	1	DESCRIPTION OF REVISIONS	DIS-D-00001227
APPROVED : MH. YAMANE				12.02.08		DESIGNED	YI. FUNADA
CHECKED : MH. TSUCHIDA				12.02.08		CHECKED	MH. TSUCHIDA
DESIGNED : RO. YOKOYAMA				12.02.03		DATE	16.06.03
DRAWN : RO. YOKOYAMA				12.02.03			
DRAWING NO.				EDC3-342452-00			
PART NO.				HRMCG-300-467B-1			
CODE NO.				CL323-0937-0-00			
HRS HIROSE ELECTRIC CO., LTD.				1/1			