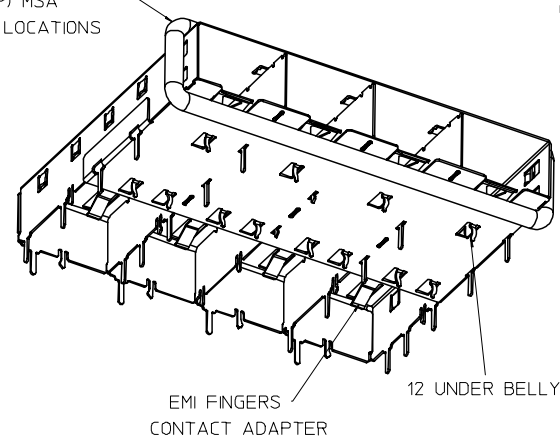
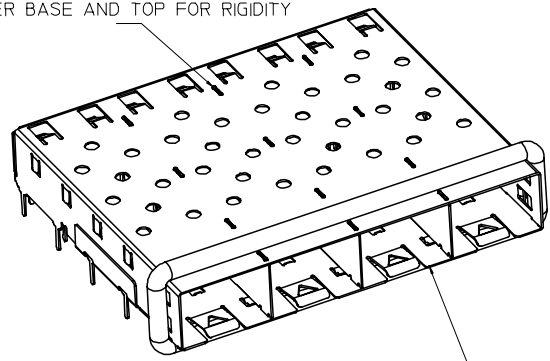


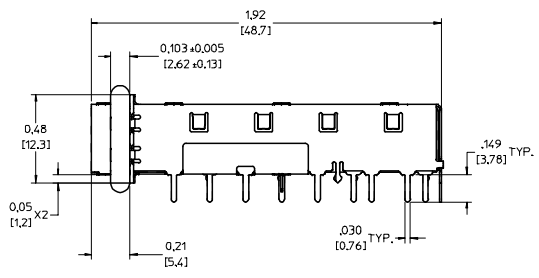
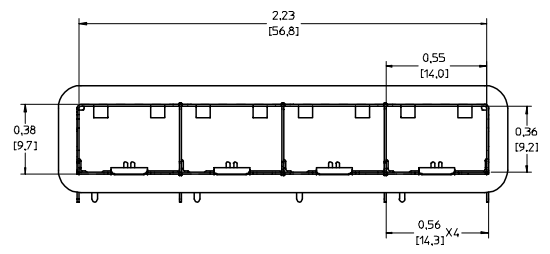
360° ELASTOMER GASKET  
COMPLIES WITH (SFP) MSA  
BOARD AND BEZEL LOCATIONS



INNER WALL TABS ARE COINED  
OVER BASE AND TOP FOR RIGIDITY



DIMENSIONS OF EACH INNER CAGE DESIGNED  
TO FUNCTION WITH SMALL FORM-FACTOR  
PLUGGABLE (SFP) TRANSCEIVER



NOTES:

- SOLDER POSTS .145' LONG -
- .062 [1.57] MINIMUM PCB THICKNESS FOR SINGLE SIDED USE.
- .150 [3.81] MINIMUM PCB THICKNESS FOR BELLY TO BELLY USE.
- REFER TO DOCUMENT SD-74728-410 FOR DETAILS ON PCB LAYOUT,  
BOARD POSITIONING, AND BEZEL OPENING.
- ADJACENT PORTS ARE SPACED .561 [14.25] APART.
- MATERIAL: COPPER ALLOY.

|  |  |                                       |                      |              |                       |   |   |
|--|--|---------------------------------------|----------------------|--------------|-----------------------|---|---|
| EC NO: USY2005-0037<br>DRAWN: K SIMONSO 2004/10/09<br>CHKD: BRUSSELL 2004/10/09<br>APPR: BRUSSELL 2004/10/13 | QUALITY SYMBOLS                                      | GENERAL TOLERANCES (UNLESS SPECIFIED) |                      | SCALE 3:1    | DESIGN UNITS METRIC   | THIRD ANGLE PROJECTION  | REVISE ON CAD ONLY  |
|  | -0<br>-0   | 4 PLACES                              | ± .005               | ± .005       | DIMENSION STYLE IN/MM |   | TITLE<br>1X4 SFP CAGE ASSY,<br>W/ 0.103 GASKET, SOLDER<br>POST, F/ LIGHT PIPES                |
|  |  | 3 PLACES                              | ± .005               | ± .005       | DRAWN BY K SIMONSO    | DATE 2004/10/09   |   |
|  |  | 2 PLACES                              | ± 0.13               | ± 0.01       | CHECKED BY BRUSSELL   | DATE 2004/10/09   | MOLEX INCORPORATED<br>MATERIAL NO. 747280412<br>DOCUMENT NO. SD-74728-412<br>SHEET NO. 1 OF 2 |
|  | 1 PLACE  | ± 0.25                                | ± .005               | ANGULAR ± 1° |                       |   |   |
|  | DRAFT WHERE APPLICABLE MUST REMAIN WITHIN DIMENSIONS |                                       | APPROVED BY BRUSSELL |              | DATE 2004/10/09       | THIS DRAWING CONTAINS INFORMATION THAT IS PROPRIETARY TO MOLEX INCORPORATED AND SHOULD NOT BE USED WITHOUT WRITTEN PERMISSION |   |

20 | 19 | 18 | 17 | 16 | 15 | 14 | 13 | 12 | 11 | 74728 | 9 | 8 | 7 | 6 | 5 | 4 | 3 | 2 | 1

| DATE       | REV | CHANGES         | COMMENTS |
|------------|-----|-----------------|----------|
| 2004/10/09 | A   | INITIAL RELEASE | N/A      |
|            |     |                 |          |
|            |     |                 |          |

| EC NO: USY2005-0037<br>P: DRW:KSIMONSO 2004/10/09<br>CHKD:BRUSSELL 2004/10/09<br>APPR:BRUSSELL 2004/10/13<br>REV: A           | QUALITY SYMBOLS | GENERAL TOLERANCES (UNLESS SPECIFIED)  | SCALE 1:1   | DESIGN UNITS METRIC                                      | THIRD ANGLE PROJECTION  | REVISE ON CAD ONLY |        |        |          |       |        |          |       |      |         |       |      |  |                 |  |       |      |  |  |  |  |  |
|---|-----------------|--|---|--|---|--------------------|--------|--------|----------|-------|--------|----------|-------|------|---------|-------|------|--|-----------------|--|-------|------|--|--|--|--|--|
|   | ▽-0             | <table border="1"> <thead> <tr> <th></th> <th>mm</th> <th>INCH</th> </tr> </thead> <tbody> <tr> <td>4 PLACES</td> <td>±.0005</td> <td>±.0002</td> </tr> <tr> <td>3 PLACES</td> <td>±.001</td> <td>±.0005</td> </tr> <tr> <td>2 PLACES</td> <td>±.013</td> <td>±.01</td> </tr> <tr> <td>1 PLACE</td> <td>±.025</td> <td>±.01</td> </tr> </tbody> </table> |   | mm   | INCH  | 4 PLACES           | ±.0005 | ±.0002 | 3 PLACES | ±.001 | ±.0005 | 2 PLACES | ±.013 | ±.01 | 1 PLACE | ±.025 | ±.01 | <table border="1"> <thead> <tr> <th colspan="2">DIMENSION STYLE</th> </tr> <tr> <th>IN/MM</th> <th>DATE</th> </tr> </thead> <tbody> <tr> <td> </td> <td> </td> </tr> </tbody> </table> | DIMENSION STYLE |  | IN/MM | DATE |  |  | TITLE: 1X4 SFP CAGE ASSY, W/ 0.103 GASKET, SOLDER POST, F/ LIGHT PIPES |  |  |
|   |                 | mm   | INCH  |  |   |                    |        |        |          |       |        |          |       |      |         |       |      |  |                 |  |       |      |  |  |  |  |  |
|   | 4 PLACES        | ±.0005   | ±.0002  |  |   |                    |        |        |          |       |        |          |       |      |         |       |      |  |                 |  |       |      |  |  |  |  |  |
| 3 PLACES  | ±.001           | ±.0005   |   |  |   |                    |        |        |          |       |        |          |       |      |         |       |      |  |                 |  |       |      |  |  |  |  |  |
| 2 PLACES  | ±.013           | ±.01   |   |  |   |                    |        |        |          |       |        |          |       |      |         |       |      |  |                 |  |       |      |  |  |  |  |  |
| 1 PLACE   | ±.025           | ±.01   |   |  |   |                    |        |        |          |       |        |          |       |      |         |       |      |  |                 |  |       |      |  |  |  |  |  |
| DIMENSION STYLE   |                 |  |   |  |   |                    |        |        |          |       |        |          |       |      |         |       |      |  |                 |  |       |      |  |  |  |  |  |
| IN/MM   | DATE            |  |   |  |   |                    |        |        |          |       |        |          |       |      |         |       |      |  |                 |  |       |      |  |  |  |  |  |
|   |                 |  |   |  |   |                    |        |        |          |       |        |          |       |      |         |       |      |  |                 |  |       |      |  |  |  |  |  |
| ▽C-0  | ANGULAR ± 1°    | DRAFT WHERE APPLICABLE MUST REMAIN WITHIN DIMENSIONS   | DRAWN BY: KSIMONSO<br>CHECKED BY: BRUSSELL<br>APPROVED BY: BRUSSELL | DATE: 2004/10/09<br>DATE: 2004/10/09<br>DATE: 2004/10/09 | MOLEX INCORPORATED<br>MATERIAL NO. 747280412   DOCUMENT NO. SD-74728-412   SHEET NO. 2 OF 2 |                    |        |        |          |       |        |          |       |      |         |       |      |  |                 |  |       |      |  |  |  |  |  |
| THIS DRAWING CONTAINS INFORMATION THAT IS PROPRIETARY TO MOLEX INCORPORATED AND SHOULD NOT BE USED WITHOUT WRITTEN PERMISSION |                 |  |   |  |   |                    |        |        |          |       |        |          |       |      |         |       |      |  |                 |  |       |      |  |  |  |  |  |

19 | 18 | 17 | 16 | 15 | 14 | 13 | 12 | 11 | 10 | 9 | 8 | 7 | 6 | 5 | 4 | 3 | 2 | 1