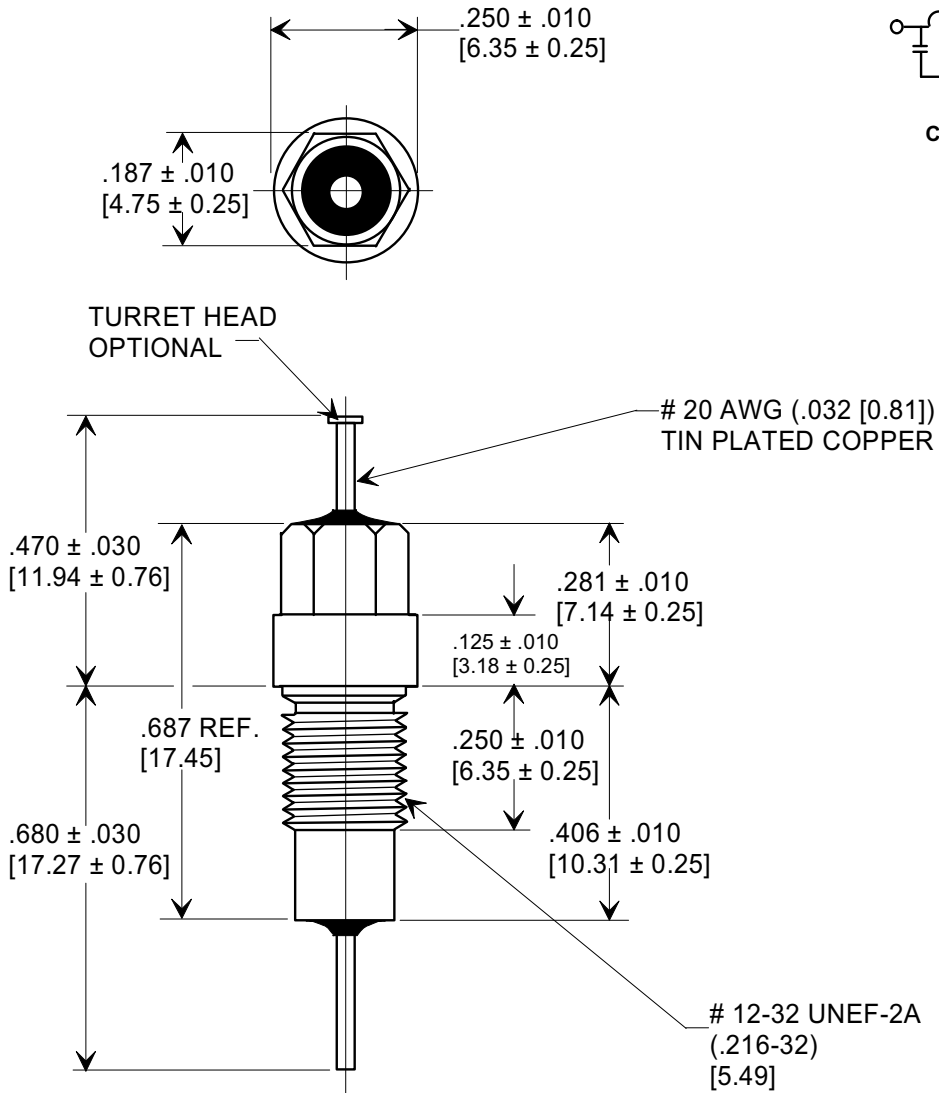
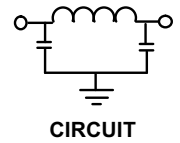
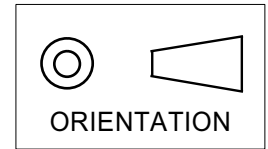


MARKETING SALES DRAWING
DIMENSIONS IN INCHES - DO NOT SCALE THIS DRAWING
DIMENSIONS IN METRIC - []

Electrical Testing
per Tusonix standard
test plans and Mil-Std-202
Test Methods.



MIN. CAP.	+ 125 °C WORKING VOLTAGE	I.R. MIN. @ 100 VDC	DWV	CURRENT	MINIMUM NO LOAD INSERTION LOSS (dB) AT 25°C PER MIL-STD-220			
					5 MHz	20 MHz	1 GHz	10 GHz
12,000 pF	70 VDC	10 GΩ	500 VDC	10 A	20	48	65	65

X-2015 Rev-0 REVISION RECORD Original Release C.O. WAS SK 7096-002-S EC. 6-14-93 930528-2 0 DWG. REVISED EC. 5-12-94 940217-3 1 RDN TO COMPUTER FORMAT L.E. 06-03-02 20020528-3-04 2	--TOLERANCES-- Unless Otherwise Specified DECIMAL ± // // // ANGLES ± // // //		Title EMI FILTER MIL 15733/61-0009	
	TUSONIX TUCSON, ARIZONA		Drawn L.E. 06-03-02 Scale 3 X	Approved J.Mc. 06-03-02
	A		4253-500	