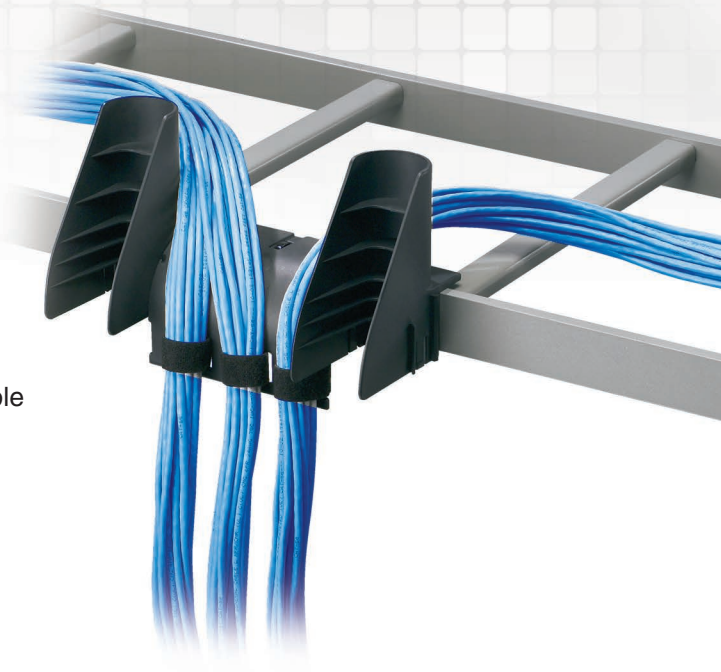
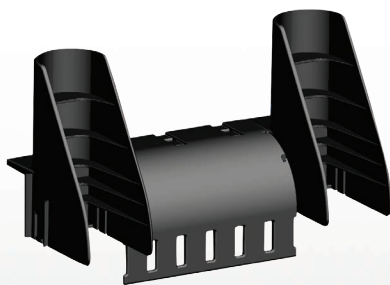


Waterfall Accessories

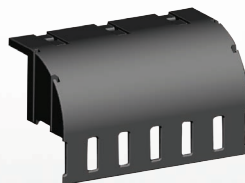
Bend radius control is an important element of cable management that prevents degradation of cable performance to improve network reliability. Panduit waterfall accessories are designed to maintain bend radius control and are available in a variety of mounting configurations to make the product easy to install and maintain. The waterfall accessories are part of the complete range of cable management accessories available from Panduit.



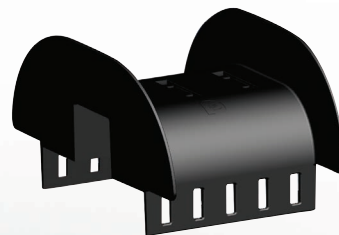
Key Features	Benefits
Complete bend radius control	Helps prevent degradation of cable performance Prevents pinch points that could cause damage to cable
Installation cable tie slots	Allows attachment of all manufacturers standard ladder rack
Cable tie slots	Provides placement of 3/4" Tak-Ty® Hook & Loop Cable Ties to retain and manage the cable bundle without over tensioning
UL94V-0	Meets flame retardant specifications
Modular solutions	Allows installation in a variety of configurations and reduces inventory levels



CMW-KIT
Waterfall Kit



CMWB
Waterfall Base



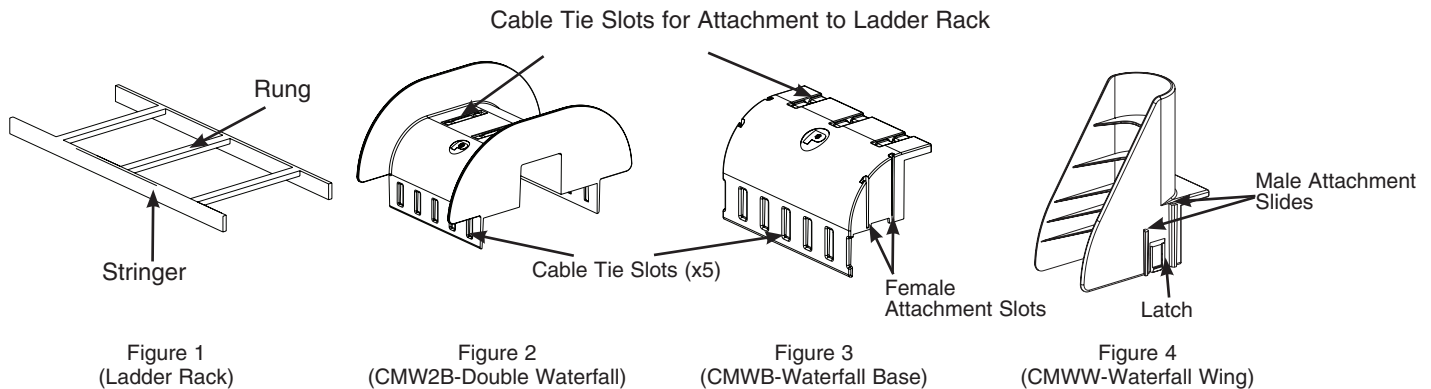
CMW2B
Double Waterfall

Waterfall Accessories

Ordering Information

Part Number	Part Description	Std. Pkg. Qty.	Std. Ctn. Qty.
CMW-KIT	Cable management waterfall kit. Provides bend radius control when transferring cables from standard ladder rack. Kit includes CMWB, two CMWW, and cable ties.	1	10
CMWB	Cable management waterfall base. Used to maintain 1.75" bend radius control vertically when transferring cable off of ladder rack. Mounts to ladder rack rung or stringer with standard cross section cable ties (included).	1	10
CMWW	Cable management waterfall wing. Used in conjunction with CMWB to maintain 1.00" bend radius control horizontally when transferring cable off ladder rack.	1	10
CMW2B	Cable management double waterfall base. Used to maintain 1.75" bend radius control vertically when transferring cable off of ladder rack. Mounts to ladder rack rung with standard cross section cable ties (included).	1	10

Installation Instructions



- To provide vertical bend radius control for ladder rack rung or stringer (Figure 1), mount waterfall base (Figure 3) to rung or stringer (Figure 1) with three black Panduit PLT series cable ties (included). When mounting the base to the stringer, both cable tie windows are used. When mounting the base to a wide rung, only one of the cable tie windows are used.
- To provide horizontal bend radius when the waterfall base is installed, slide the male attachment slides of the waterfall wing (Figure 4) from above into the female attachment slots on the outside edge of the waterfall base (Figure 3).
Note: The waterfall wing can be used for bend radius control on either the right or left side of the base.
- To provide vertical bend radius control on both sides of ladder rack rung, mount double waterfall (Figure 2) to ladder rack rung (Figure 1) with three black Panduit PLT series cable ties (included).
- Use the Tak-Ty® Hook & Loop Cable Tie slots found on the lower portion of both the waterfall base (Figure 3) and the double waterfall (Figure 2) to secure cable with maximum 3/4" Tak-Ty® Hook & Loop Cable Ties.

WORLDWIDE SUBSIDIARIES AND SALES OFFICES

PANDUIT CANADA
Markham, Ontario
cs-cdn@panduit.com
Phone: 800.777.3300

PANDUIT EUROPE LTD.
London, UK
cs-emea@panduit.com
Phone: 44.20.8601.7200

PANDUIT SINGAPORE PTE. LTD.
Republic of Singapore
cs-ap@panduit.com
Phone: 65.6305.7575

PANDUIT JAPAN
Tokyo, Japan
cs-japan@panduit.com
Phone: 81.3.6863.6000

PANDUIT LATIN AMERICA
Guadalajara, Mexico
cs-la@panduit.com
Phone: 52.33.3777.6000

PANDUIT AUSTRALIA PTY. LTD.
Victoria, Australia
cs-aus@panduit.com
Phone: 61.3.9794.9020

For a copy of Panduit product warranties, log on to www.panduit.com/warranty

For more information

Visit us at www.panduit.com

Contact Customer Service by email: cs@panduit.com
or by phone: 800.777.3300

PANDUIT®

©2017 Panduit Corp.
ALL RIGHTS RESERVED.
WACB32--SA-ENG
1/2017