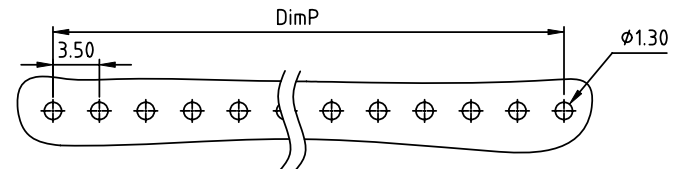
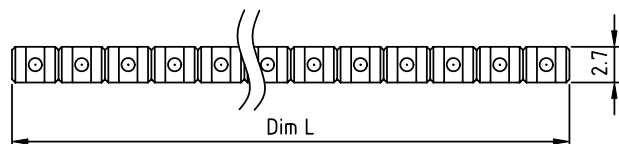
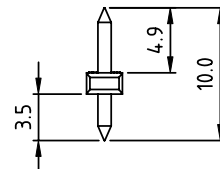
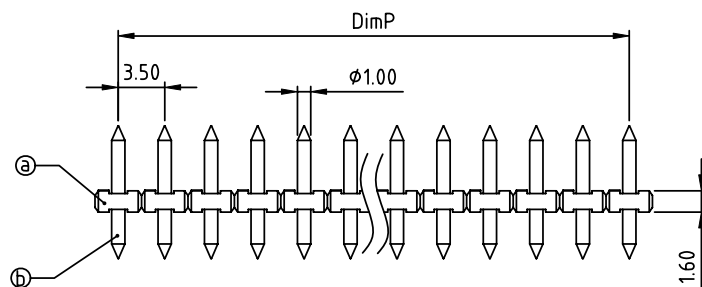


PRODUCT NUMBER	PITCH
OPxx2Bx100J0G	3.50 mm



RECOMMENDED P.C.B LAYOUT  
TOP VIEW



Material:

- Item ① Terminal(housing): High temp. polyamide (UL94V-0)
- Item ② Pin: Brass, Tin or Au plated.

Electrical:

- cULus
- Voltage rating: 150V
- Current rating: 10A
- Withstanding Voltage: 1.3KV
- Operating temperature: -40°C to +120°C
- Reflow Soldering temperature: 260°C/10 Sec Max
- Safety Approval:

DIMENSION

Dim P	(N-1)×3.50
Dim L	N×3.50

N=Number of poles

Poles	Tolerance
2p-5p	±0.10
6p-9p	±0.15
10p-13p	±0.20
14p-17p	±0.25
18p-24p	±0.30

PART NO.: OP xx 2B x 1 00J0 G

- Solid block
- No. of poles
- 02 2 poles
- 03 3 poles
- ... ..
- 24 24 poles
- 0 Tin plating 120u" Min
- 1 Gold plating 10u"
- 2 Gold flash
- RoHS compliant (lead<4%)
- In copper Alloy

mat'l. code				surface ASME Y14.5	tolerance ASME Y14.5	projection 	product family TERMINAL BLOCK
ltr	ecn no	dr	date	tolerances unless otherwise specified		MM	title TERMINAL BLOCK
				angles X°±1°	X.±0.5 X.X±0.3 X.XX±0.1		scale PLUGGABLE SOCKET, VERTICAL, THR
		dr	EVIN ZHONG	041714			dwg no sheet 1 of 1 size A4
		enr	EVIN ZHONG	041714			OPxx2Bx100J0G
		chr	HANKE FENG	041714			
		appd	SHI JUN	041714			type CUSTOMER Drawing
sheet index	revision sheet	A	1				