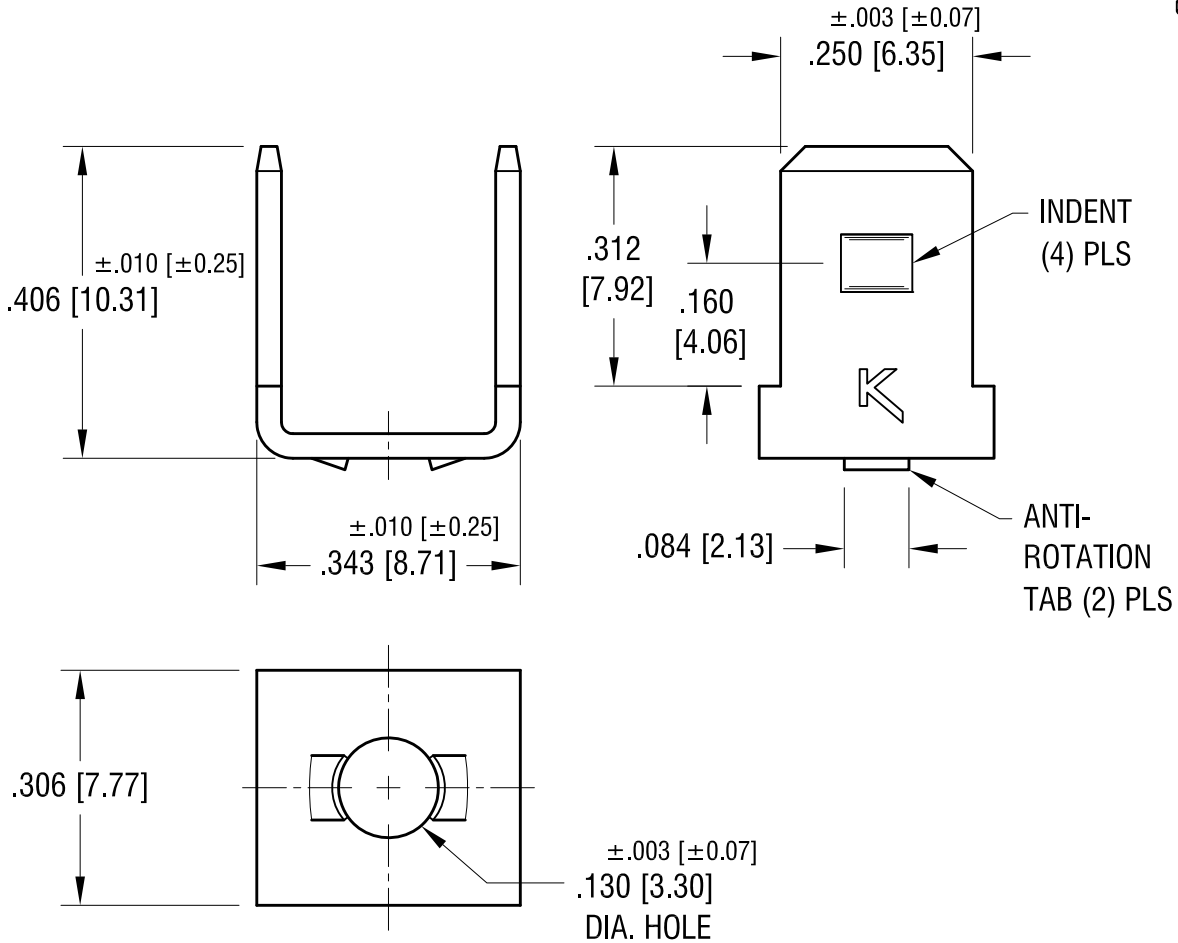
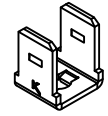


THIS DOCUMENT IS THE PROPERTY OF KEYSTONE ELECTRONICS CORP. AND SHALL NOT BE REPRODUCED, DISTRIBUTED OR USED AS A BASIS FOR MANUFACTURE WITHOUT PRIOR WRITTEN PERMISSION FROM KEYSTONE ELECTRONICS CORP.

ACTUAL SIZE



1.27.16	CHANGE AS PER ECN 16-016	F
8.21.12	CHANGE AS PER ECN 12-111	E
5.10.04	CHANGE AS PER ECN 04-031	D
DATE	DESCRIPTION	REV.

<b>KEYSTONE ELECTRONICS CORP.</b>			
www.keyelco.com • ASTORIA, N.Y. 11105-2017 • Tel (718) 956-8900			
PART NAME		.250 QUICK-FIT TERMINAL	
MATERIAL		.032 [0.81] TH'K BRASS	
FINISH		DRN BY	DATE
BRIGHT BRASS		BOONE	4.30.82
		APP'D	SCALE
TOLERANCES INCH [MM]		CODE	DWG NO.
ANGULAR $\pm 1^\circ$		C	1257
UNLESS OTHERWISE SPECIFIED			