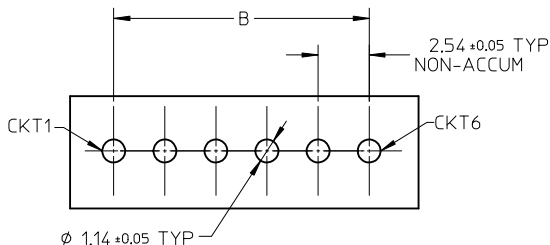
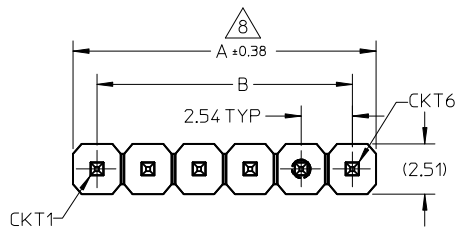
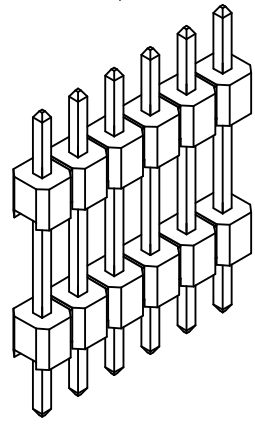
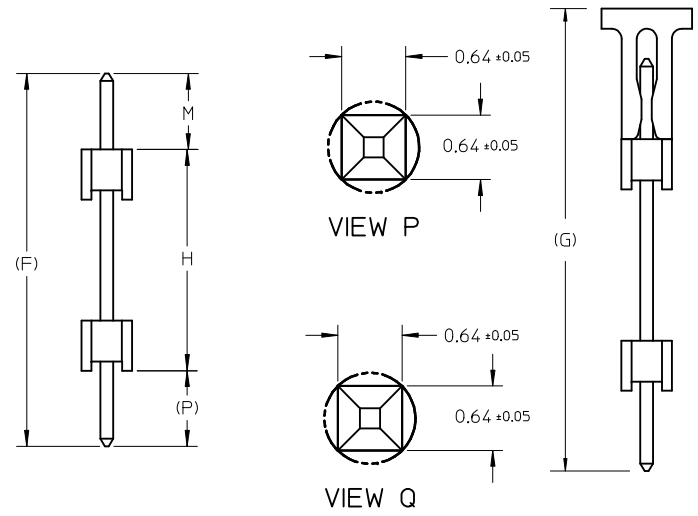
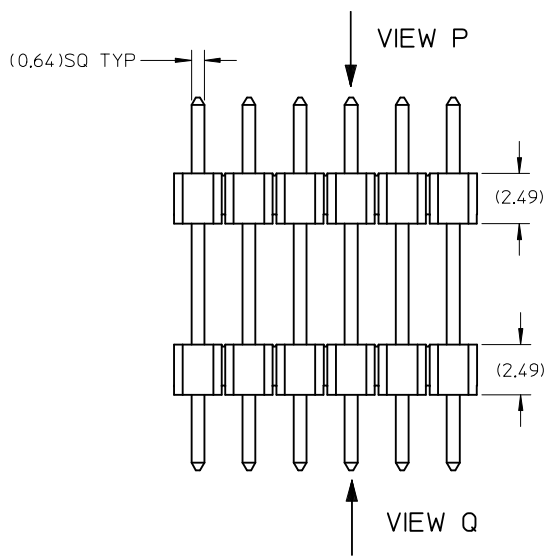


- NOTES:
- MATERIAL:
HOUSING: NYLON, GLASS FILLED, UL94V-0,
COLOR: BLACK
TERMINAL: 0.64MM SQ PIN, COPPER ALLOY
 - PLATING TYPE:
(1) : GOLD FLASH OVER
1.254μm MIN. NICKEL OVERALL.
(2) : 0.05 μm MIN. GOLD PLATE ON CONTACT AND
2.50 μm MIN. TIN ON SOLDER TAIL OVER
1.25 μm MIN. NICKEL OVERALL.
(3) : 0.38 μm MIN. GOLD PLATE ON CONTACT AND
2.00 μm MIN. TIN ON SOLDER TAIL OVER
1.25 μm MIN. NICKEL OVERALL.
(4) : 0.75 μm MIN. GOLD PLATE ON CONTACT AND
2.00 μm MIN. TIN ON SOLDER TAIL OVER
1.25 μm MIN. NICKEL OVERALL.
(5) : 2.50 μm MIN. TIN OVER
1.25 μm MIN. NICKEL OVERALL.
(6) : 0.75 μm MIN. GOLD PLATE ON CONTACT AND
SOLDER TAIL OVER 1.25 μm MIN. NICKEL OVERALL.
 - THE ABOVE 6 CKT IS FOR ILLUSTRATION PURPOSE ONLY.
 - PACKAGING TYPE: SEE TABLE
 - RECOMMENDED PCB THICKNESS 1.60MM.
 - PRODUCT SPECIFICATION: PS-87920-019
 - WAFER TO BE FLAT WITHIN 0.003mm/mm
 - IRREGULAR CIRCUIT CUTOFF WITHIN BREAKAWAY SECTION IS PERMISSIBLE. CUTTING OR CHIPPING OF THE MAIN BODY IS NOT ACCEPTABLE.
 - PARTS ARE NOT STACKABLE ON 2.54 CENTER
 - PACKAGING SPECIFICATION: SEE TABLE



RECOMMENDED PCB HOLE LAYOUT



VOID -0200,-0600,-0801 EC NO: S2017-0349 DRWN:CGOH 2016/12/09 CHKD:FCSS00 2016/12/20 APPR:KHLIM 2017/01/03	DESCRIPTION	QUALITY SYMBOLS	GENERAL TOLERANCES (UNLESS SPECIFIED)		DIMENSION STYLE		SCALE	DESIGN UNITS	THIRD ANGLE PROJECTION	
		$\nabla_A = 0$ $\nabla_C = 0$ $\nabla_P = 0$	mm	INCH	MM ONLY		NTS	METRIC		
B	REV	4 PLACES	± ---	± ---	DRAWN BY	DATE	TITLE CUSTOM HEADER 2.54MM PITCH SINGLE ROW DUAL WAFER HEADER, T/H			
		3 PLACES	± ---	± ---	SKLIM01	2006/03/10				
		2 PLACES	± 0.2	± ---	CHECKED BY	DATE	DOCUMENT NO. SD-87937-007			
		1 PLACE	± ---	± ---	PATEY	2006/03/20				
		0 PLACE	±	±	APPROVED BY	DATE	SHEET NO. 1 OF 2			
					MLONG	2010/01/14				
			ANGULAR ± 3 °		MATERIAL NO.		THIS DRAWING CONTAINS INFORMATION THAT IS PROPRIETARY TO MOLEX INCORPORATED AND SHOULD NOT BE USED WITHOUT WRITTEN PERMISSION			
			DRAFT WHERE APPLICABLE MUST REMAIN WITHIN DIMENSIONS		SEE TABLE					

10 9 8 7 6 5 4 3 2 1

PART NUMBERS	CKT SIZE	VOID POSITION	DIMENSION							PLATING OPTION	PACKAGING TYPE	PACKAGING SPECIFICATION
			A	B	MATING ENG	STACKER HEIGHT	SOLDER TAIL	WITH CAP	(G)			


87937-0202	2	----	5.08	2.54	3.50	25.00	3.50	32.00	----	5	TRAY PACKED	PK-89990-489
87937-0203	2	----	5.08	2.54	2.45	15.60	2.45	20.50	----	5	BULK PACKED	PK-89990-491
87937-0302	3	----	7.62	5.08	11.70	8.50	11.70	31.90	----	5	TRAY PACKED	PK-89990-489
87937-0306	3	----	7.62	5.08	10.50	20.80	3.00	34.30	35.50	3	TUBE PACKED	PK-89990-***
		----							----			
87937-0602	6	----	15.24	12.70	3.00	8.90	3.00	14.90	----	5	TRAY PACKED	PK-89990-489
87937-0800	8	----	20.32	17.78	9.00	12.00	3.00	24.00	----	5	TRAY PACKED	PK-89990-489
		----							----			
87937-1000	10	----	25.40	22.86	8.15	25.00	3.05	36.20	----	3	TRAY PACKED	PK-89990-489
87937-1600	16	----	40.64	38.10	12.70	17.63	5.99	36.32	----	3	BULK PACKED	PK-89990-491
87937-1601	16	----	40.64	38.10	11.94	19.05	2.79	33.78	----	3	BULK PACKED	PK-89990-491
87937-1602	16	----	40.64	38.10	2.14	8.70	2.16	13.00	----	5	BULK PACKED	PK-89990-491

D

C

B

A

VOID -0200,-0600,-0801 EC NO: S2017-0349 DRWN:CGOH 2016/12/09 CHKD:FC00 2016/12/20 APPR:KHLIM 2017/01/03	QUALITY SYMBOLS	GENERAL TOLERANCES (UNLESS SPECIFIED)		DIMENSION STYLE		SCALE	DESIGN UNITS	THIRD ANGLE PROJECTION	
	$\nabla_A = 0$	mm	INCH	MM ONLY		NTS	METRIC		
	$\nabla_B = 0$	4 PLACES ± ---	± ---	DRAWN BY	DATE	TITLE			
	$\nabla_C = 0$	3 PLACES ± ---	± ---	SKLIM01	2006/03/10	CUSTOM HEADER			
	2 PLACES ± 0.2	± ---	CHECKED BY	DATE	2.54MM PITCH SINGLE ROW				
	1 PLACE ± ---	± ---	PATEY	2006/03/20	DUAL WAFER HEADER, T/H				
	0 PLACE ±	±	APPROVED BY	DATE					
	ANGULAR ± 3 °		MLONG	2010/01/14					
	DRAFT WHERE APPLICABLE MUST REMAIN WITHIN DIMENSIONS		MATERIAL NO.		DOCUMENT NO.		SHEET NO.		
			SEE TABLE		SD-87937-007		2 OF 2		
			SIZE A3		THIS DRAWING CONTAINS INFORMATION THAT IS PROPRIETARY TO MOLEX INCORPORATED AND SHOULD NOT BE USED WITHOUT WRITTEN PERMISSION				

9 8 7 6 5 4 3 2 1