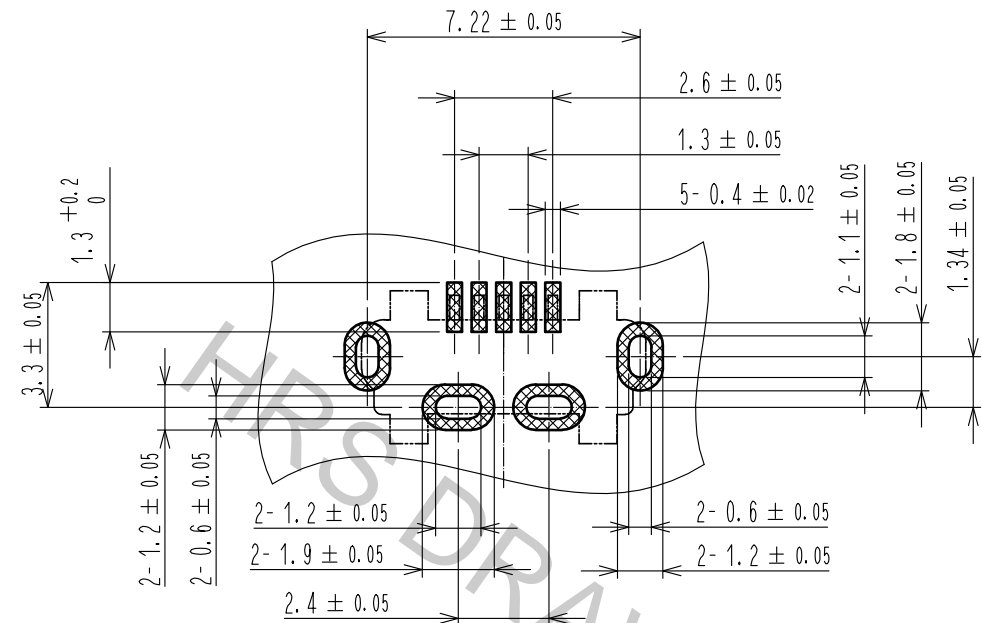
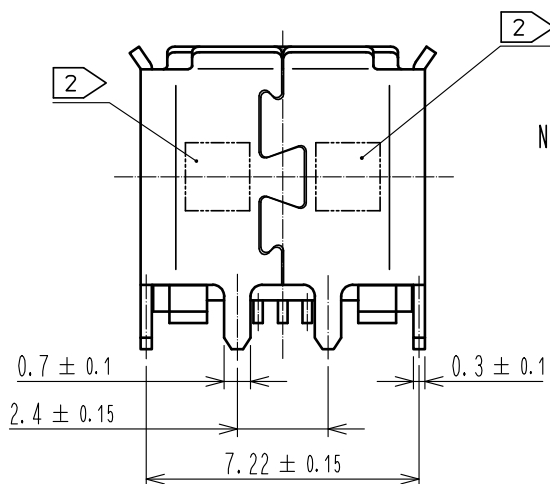
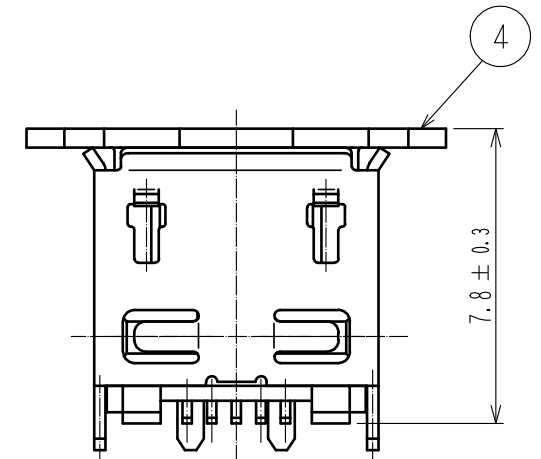
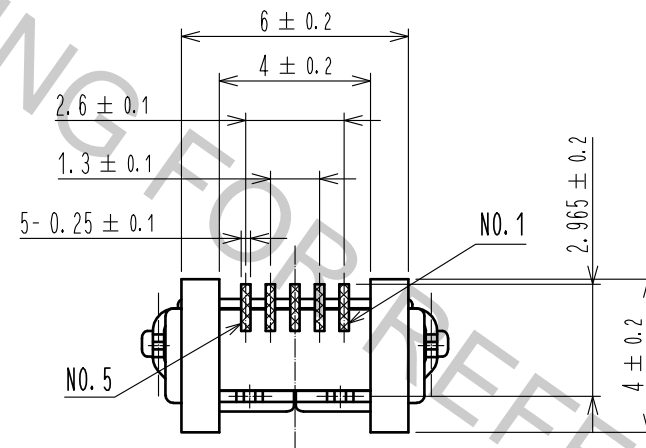
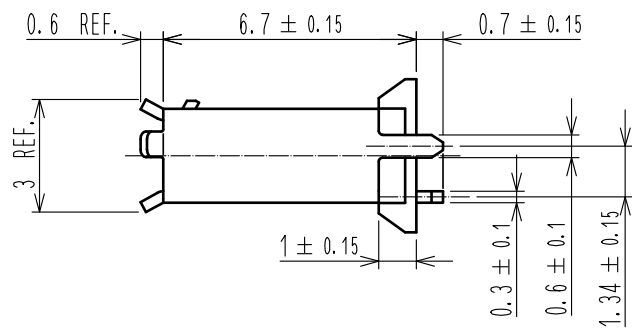
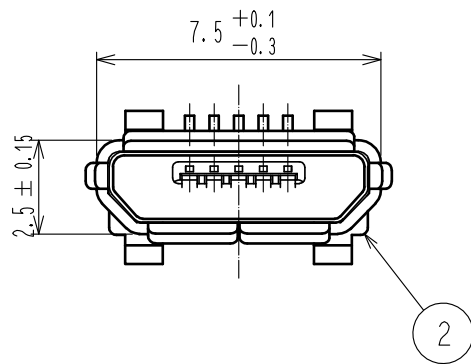
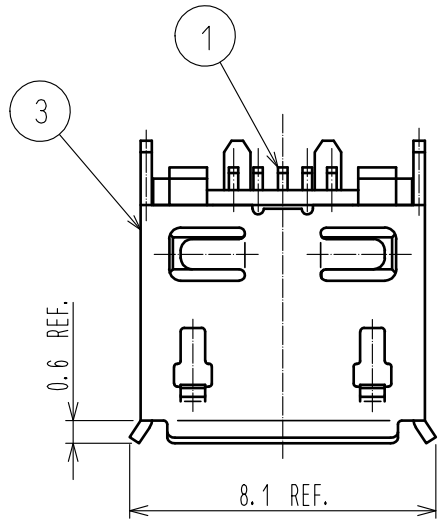
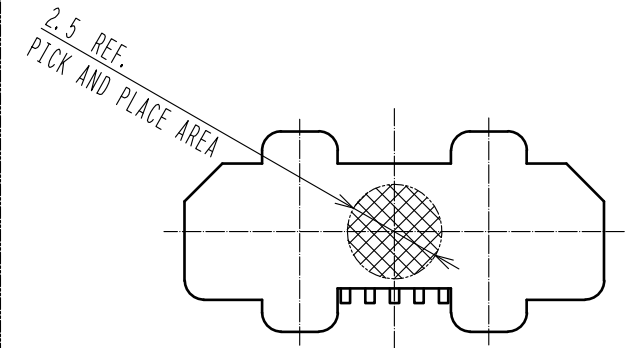


PCB LAYOUT



PICK AND PLACE CAP

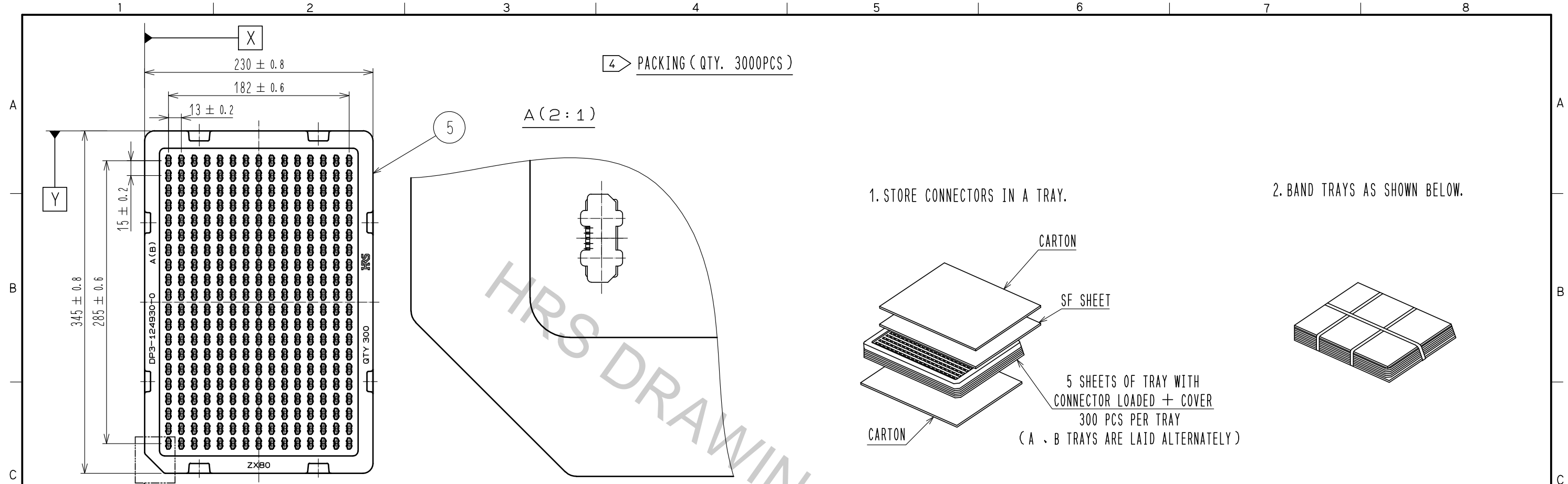


- NOTE
- 1 CO-PLANARITY IS WITHIN 0.08.
  - 2 LOT No. SHALL BE INDICATED AT THE POSITION AS SHOWN.
  - 3 PLATING  
CONTACT AREA : GOLD PLATE 0.75 μm MIN.  
LEAD AREA : GOLD PLATE 0.05 μm MIN.  
UNDER PLATING : NICKEL 2 μm MIN.
  - 4 PACKING  
300 PCS PER TRAY.
  - 5 AS FOR PART No. 3, THE PERFORMANCE REMAINS GOOD EVEN IF THERE IS A RUBBING WOUND BY THE ASSEMBLY PROCESS. AND THE PERFORMANCE REMAINS GOOD EVEN IF THERE IS A DIFFERENCE OF THE COLOR OF PLATING WITH THE MANUFACTURING LOT.

2	LCP	BLACK	UL94V-0	5	PS		
1	COPPER ALLOY	3		4	POLYAMIDE RESIN		
				3	STAINLESS STEEL	UNDER PLATING: NICKEL 0.2 μm MIN. OVER PLATING : TIN 1μm MIN. LUBRICANT	
NO.	MATERIAL	FINISH	REMARKS	NO.	MATERIAL	FINISH . REMARKS	
UNITS	mm	SCALE	5 : 1	COUNT	DESIGNED	CHECKED	DATE
APPROVED : NM. NISHIMATSU		15.10.27		DRAWING NO.		EDC-126723-30-00	
CHECKED : KN. ICHIKAWA		15.10.27		PART NO.		ZX80-B-5P(30)	
DESIGNED : TS. ITO		15.10.27		CODE NO.		CL242-0051-0-30	
DRAWN : AK. AKIYAMA		15.10.27				1/2	

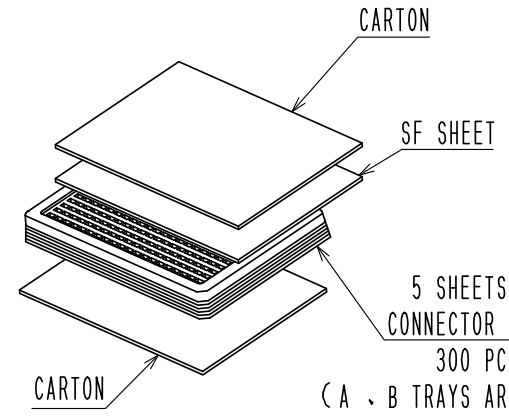
May.1.2017 Copyright 2017 HIROSE ELECTRIC CO., LTD. All Rights Reserved.

4 PACKING (QTY. 3000PCS)



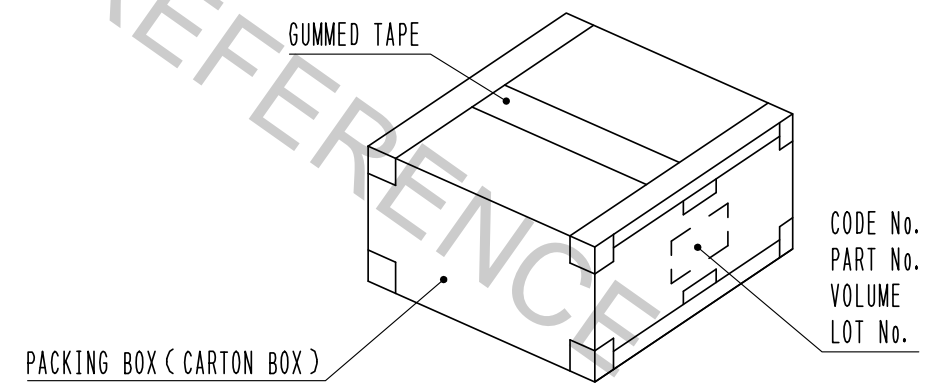
1. STORE CONNECTORS IN A TRAY.

2. BAND TRAYS AS SHOWN BELOW.

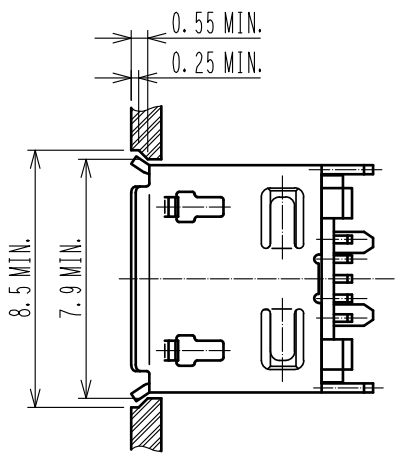
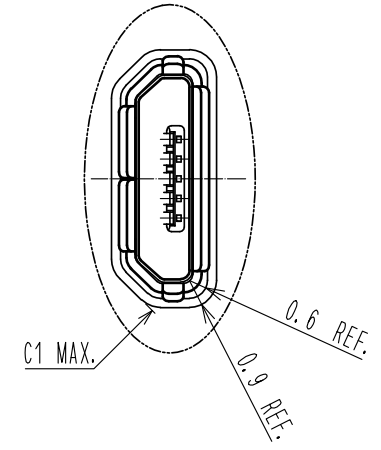


5 SHEETS OF TRAY WITH  
CONNECTOR LOADED + COVER  
300 PCS PER TRAY  
(A . B TRAYS ARE LAID ALTERNATELY)

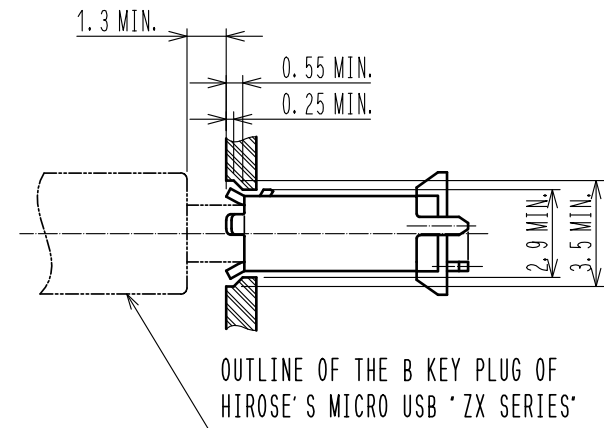
3. STORE 2 UNITS OF BANDED TRAY INTO A CARTON BOX (K-1)  
(STORE A BOUNDARY PLATE ON TOP OF THE SURFACE, THEN CLOSE  
THE BOX BY STICKING GUMMED TAPE)



RECOMMENDED PANEL CUTOUT (4:1)



MATED WITH CORRESPONDING PLUG(4:1)



<b>HRS</b>	DRAWING NO.	EDC-126723-30-00	2/2
	PART NO.	ZX80-B-5P(30)	
	CODE NO.	CL242-0051-0-30	