

REV.	DESCRIPTION	DATE
A	RELEASE	2016.06.08

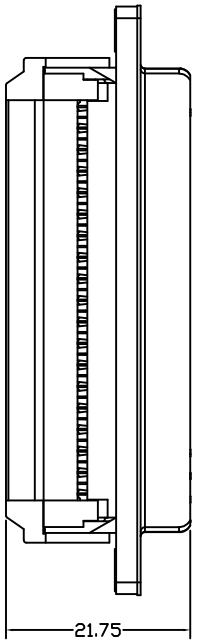
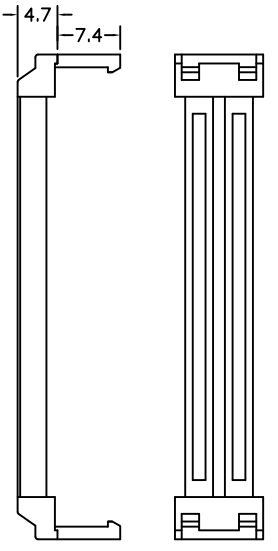
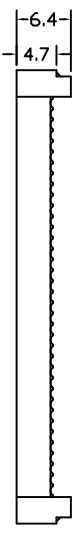
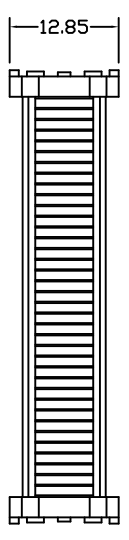
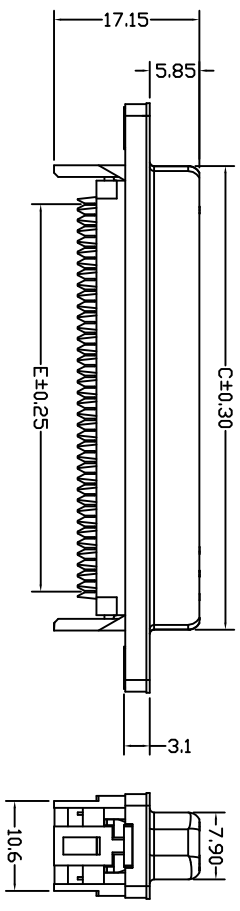
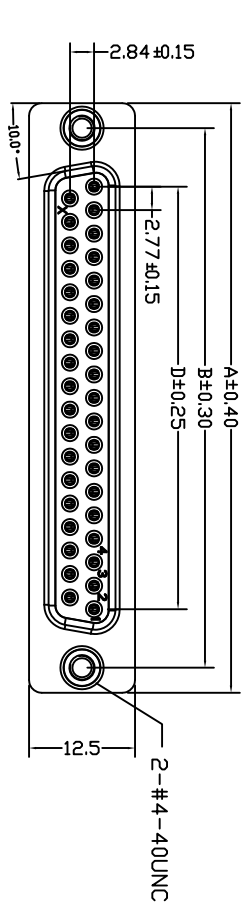
RoHS

**MATERIAL&FINISH**

Insulator: PBT Glass Fiber(UL94V-0)  
 Contact Material: Terminal Brass.  
 Contact Plating : Terminal Gold-Plated Over Nickel.  
 Shell Nickel.

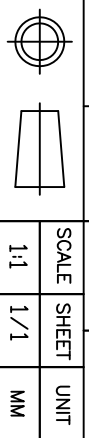
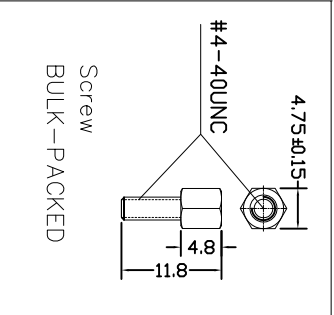
**SPECIFICATIONS**

Current Rating :1A AC, DC  
 Voltage Rating : 250V AC, DC  
 Temperature Range:-40° C To+105° C  
 Contact Resistance:20MΩ Max  
 Insulation Resistance:1000MΩ Min  
 Withstanding Voltage:500V AC/Min



NUMBER OF POSITIONS	DIMENSION				
	A	B	C	D	E
9	30.80	25.00	16.35	11.08	10.16
15	39.14	33.30	24.75	19.39	17.78
25	53.05	47.04	38.35	33.24	30.48
37	69.32	63.50	54.75	49.86	45.72

UNLESS TOLERANCE		DRAW BY	Cnc Tech,LLC	
GENERAL	ANGLE	DESIGN BY	Part NO: 410F0-XX-1-004S	
X. ± 0.30	X°. ± 3.0°	CHECK BY		
.X ± 0.20	.X' ± 2.0'	APPROVE BY		
.XX ± 0.15	.XX' ± 1.0'	SCALE		
.XXX ± 0.08	.XXX ± 0.5°	SHEET	UNIT	



Scale: 1:1  
 Sheet: 1/1  
 Unit: MM  
 Draw No: [blank]  
 Rev: A