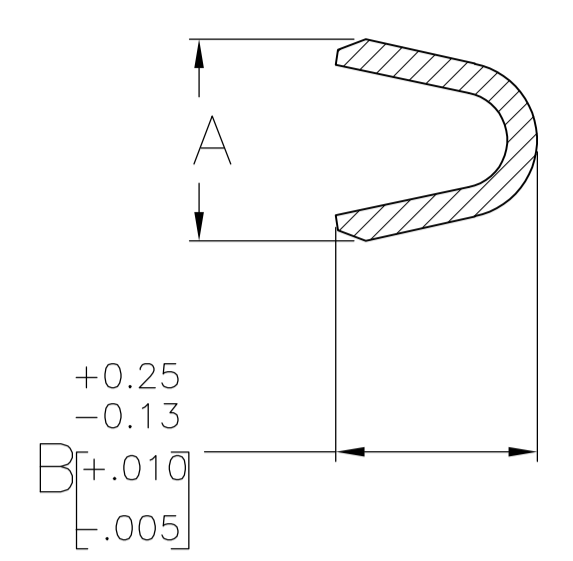
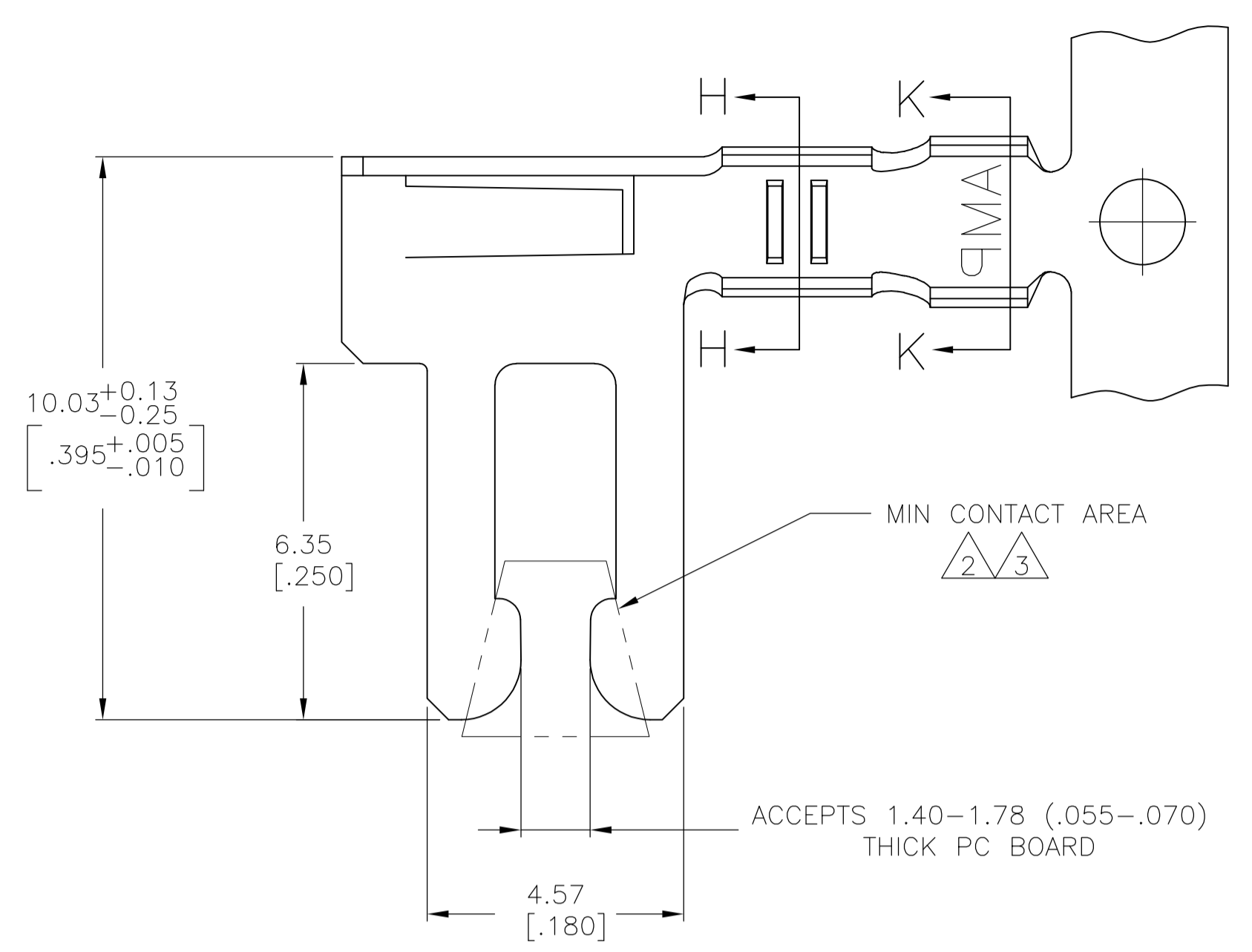
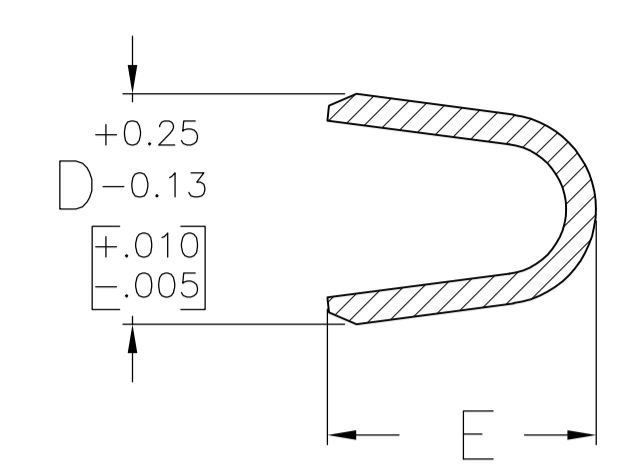


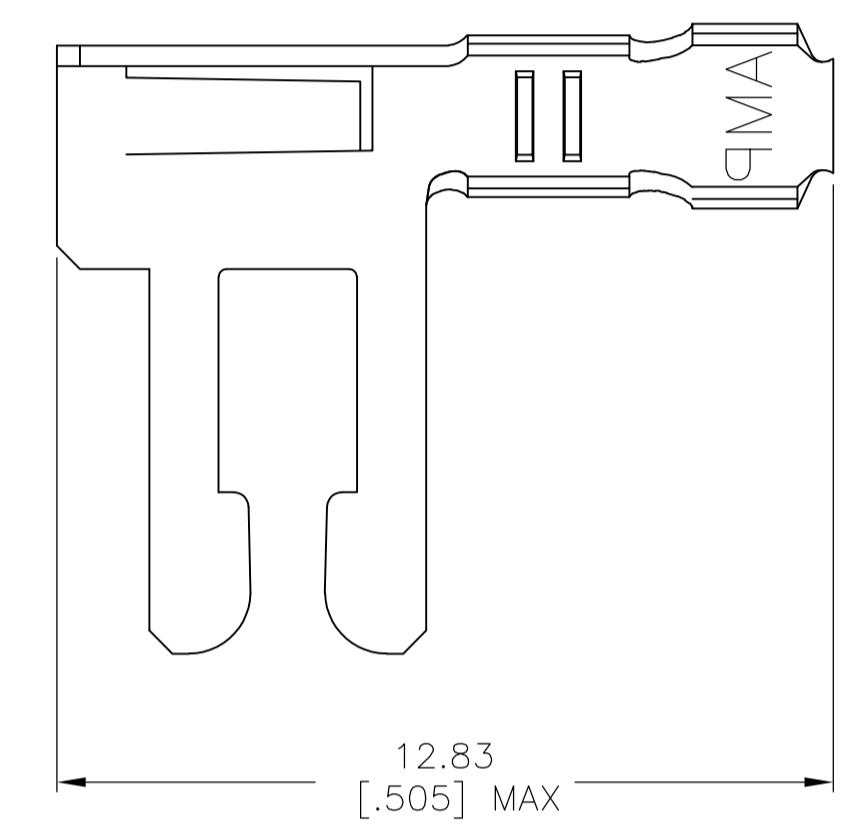
LOC		DIST		REVISIONS			
P	LTR	DESCRIPTION	DATE	DMN	APVD		
AK		ECO-05-004683	20JAN06	BSV	MM		
AK1		REVISED PER ECO-09-020774	21AUG09	KK	AEG		



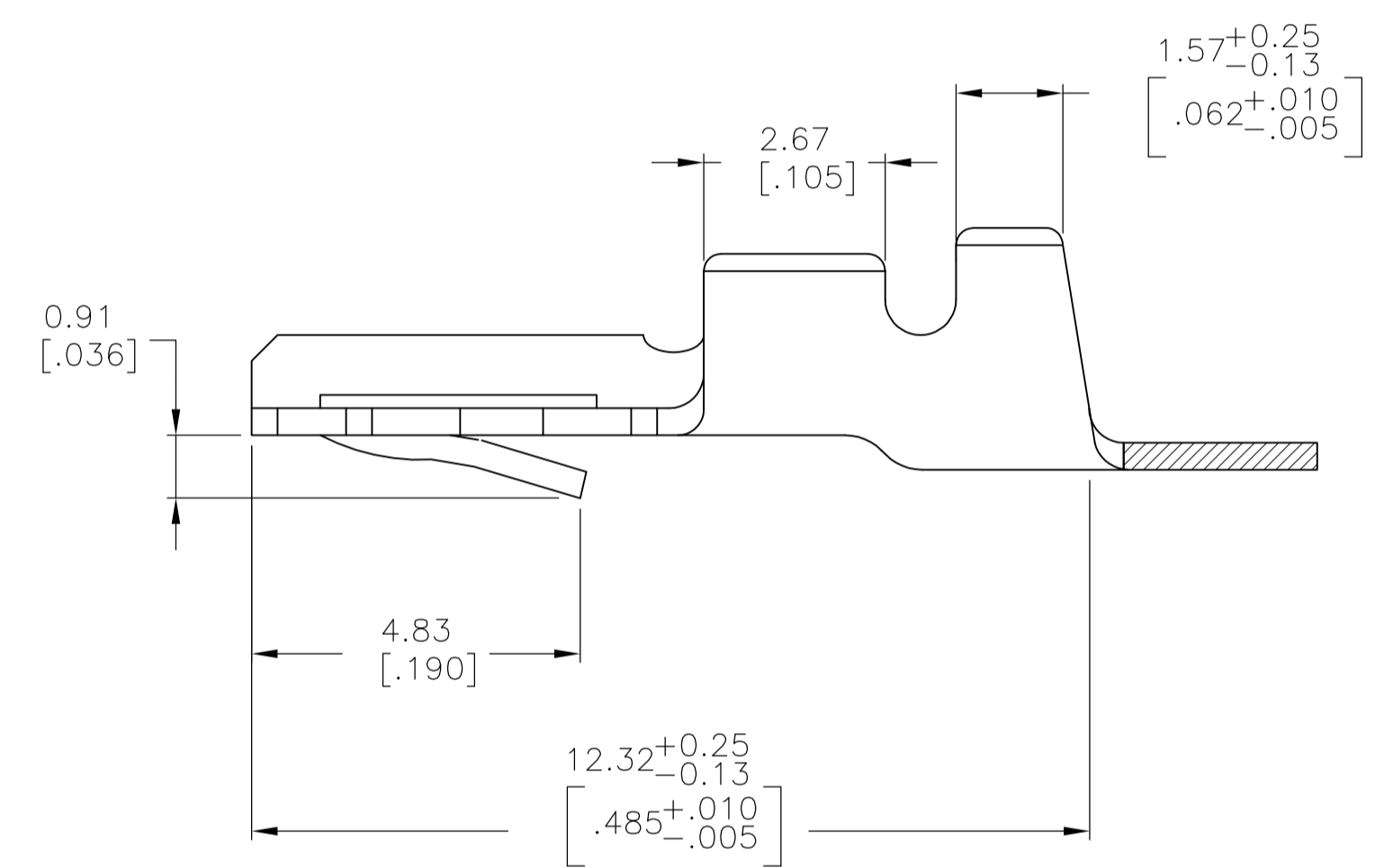
SECTION H-H



SECTION K-K



DETAIL X
SCALE 8:1



- REFER TO CUSTOMER DRAWINGS 530509, 530853, 582370, & 582380 FOR HOUSING AND PC BOARD REQUIREMENTS.
- $0.76\mu\text{m}$ [.000030] MIN GOLD OVER $1.27\mu\text{m}$ [.000050] MIN NICKEL IN CONTACT AREA, $1.27\mu\text{m}$ [.000050] MIN NICKEL ON REMAINDER OF CONTACT.
- $0.38\mu\text{m}$ [.000030] MIN GOLD OVER $1.27\mu\text{m}$ [.000050] MIN NICKEL IN CONTACT AREA, $1.27\mu\text{m}$ [.000050] MIN NICKEL ON REMAINDER OF CONTACT.
- $3.81\mu\text{m}$ [.000150] MIN TIN-LEAD OVER $0.76\mu\text{m}$ [.000030] MIN NICKEL ALL OVER.
- FOR USE WITH STANDARD APPLICATOR.
- FOR USE WITH MINATURE APPLICATOR.
- $3.81\mu\text{m}$ [.000150] MIN MATTE TIN PLATE OVER $0.76\mu\text{m}$ [.000030] MIN NICKEL ALL OVER.
- OBSOLETE PARTS: OBSOLETE CIS STREAMLINING PER D.RENAUD/D.SINISI

△8	OBSOLETE	0.89-1.40 [.035-.055]	26-22	2.16 [.085]	2.54 [.100]	1.90 [.075]	1.90-2.41 [.075-.095]	PER DETAIL-X	-	△4	5-66150-2
△8	OBSOLETE	1.52-2.29 [.060-.090]	22-18	3.56 $^{+0.25}_{-0.13}$ [.140 $^{+0.010}_{-0.005}$]	3.05 [.120]	2.67 [.105]	2.67-3.30 [.105-.130]	PER DETAIL-X	-	△4	5-66088-2
		0.89-1.40 [.035-.055]	26-22	2.16 [.085]	2.54 [.100]	1.90 [.075]	1.90-2.41 [.075-.095]	-	△6	△2	5-66362-1
		1.52-2.29 [.060-.090]	22-18	3.56 $^{+0.25}_{-0.13}$ [.140 $^{+0.010}_{-0.005}$]	3.05 [.120]	2.67 [.105]	2.67-3.30 [.105-.130]	-	△6	△2	5-66335-2
△8	OBSOLETE	1.52-2.29 [.060-.090]	22-18	3.56 $^{+0.25}_{-0.13}$ [.140 $^{+0.010}_{-0.005}$]	3.05 [.120]	2.67 [.105]	2.67-3.30 [.105-.130]	-	△5	△2	5-60215-4
		0.89-1.40 [.035-.055]	26-22	2.16 [.085]	2.54 [.100]	1.90 [.075]	1.90-2.41 [.075-.095]	PER DETAIL-X	-	△4	66150-2
		1.52-2.29 [.060-.090]	22-18	3.56 $^{+0.25}_{-0.13}$ [.140 $^{+0.010}_{-0.005}$]	3.05 [.120]	2.67 [.105]	2.67-3.30 [.105-.130]	PER DETAIL-X	-	△4	66088-2
		0.89-1.40 [.035-.055]	26-22	2.16 [.085]	2.54 [.100]	1.90 [.075]	1.90-2.41 [.075-.095]	-	△6	△2	66362-2
		0.89-1.40 [.035-.055]	26-22	2.16 [.085]	2.54 [.100]	1.90 [.075]	1.90-2.41 [.075-.095]	-	△6	△4	66362-1
△8	OBSOLETE	1.52-2.29 [.060-.090]	22-18	3.56 $^{+0.25}_{-0.13}$ [.140 $^{+0.010}_{-0.005}$]	3.05 [.120]	2.67 [.105]	2.67-3.30 [.105-.130]	-	△6	△2	66335-3
		1.52-2.29 [.060-.090]	22-18	3.56 $^{+0.25}_{-0.13}$ [.140 $^{+0.010}_{-0.005}$]	3.05 [.120]	2.67 [.105]	2.67-3.30 [.105-.130]	-	△6	△4	66335-2
		1.52-2.29 [.060-.090]	22-18	3.56 $^{+0.25}_{-0.13}$ [.140 $^{+0.010}_{-0.005}$]	3.05 [.120]	2.67 [.105]	2.67-3.30 [.105-.130]	-	△5	△2	60215-5
		1.52-2.29 [.060-.090]	22-18	3.56 $^{+0.25}_{-0.13}$ [.140 $^{+0.010}_{-0.005}$]	3.05 [.120]	2.67 [.105]	2.67-3.30 [.105-.130]	-	△5	△4	60215-4
				E	D	B	A	LOOSE PIECE	REELING	FINISH	PART NUMBER

THIS DRAWING IS A CONTROLLED DOCUMENT. DIMENSIONS: mm [INCHES]. TOLERANCES UNLESS OTHERWISE SPECIFIED: 0 PLC ±, 1 PLC ±, 2 PLC ±, 3 PLC ± 0.13 [.005], 4 PLC ±, ANGLES ±.

DMN: M. BINNER 09 JUL 97
 CHK: R. STONE 11 NOV 97
 APVD: D. WIKE 09 APR 98

Tyco Electronics Corporation
 Harrisburg, Pa 17105-3608

PRODUCT SPEC: 108-9016
 APPLICATION SPEC: 114-9002

SIZE: A1
 CAGE CODE: 00779
 DRAWING NO: 60215
 WEIGHT: -

RESTRICTED TO: -
 CUSTOMER DRAWING
 SCALE: 10:1
 SHEET: 1 OF 1
 REV: AK1